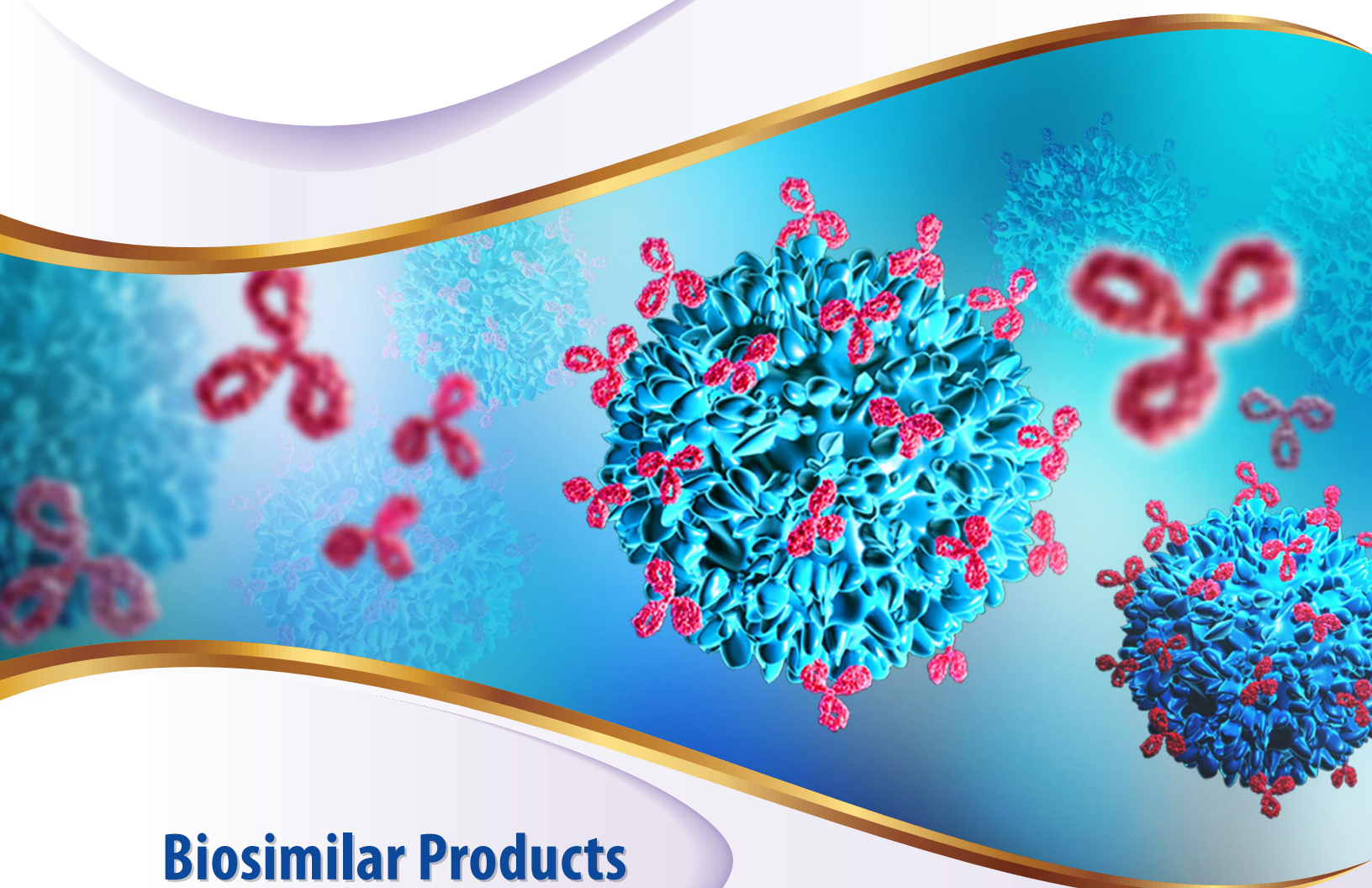


 **abeomics**

Antibodies & Engineered Cell Lines™

www.abeomics.com



Biosimilar Products

9853 Pacific Heights Blvd. Suite D, San Diego, CA 92121 USA

Tel: +1-858-263-4982 | Fax: +1-858-247-7052 | Email: support@abeomics.com | Web: www.abeomics.com

Biosimilar Product List

Monoclonal Antibodies

| Cat. No. | Product Name | Clone | Isotype | Application |
|----------|---|---------------|------------|-------------|
| 12-9061 | Anti-CD47 Antibody (magrolimab biosimilar) | Hu5F9-G4 | Human IgG4 | ELISA, FACS |
| 12-9062 | Anti-CS1 Antibody (elotuzumab biosimilar) | HuLuc63 | Human IgG1 | ELISA, FACS |
| 12-9063 | Anti-CD123 Antibody (talacotuzumab biosimilar) | CSL362 | Human IgG1 | ELISA, FACS |
| 12-9064 | Anti-CD38 Antibody (daratumumab biosimilar) | HuMax-CD38 | Human IgG1 | ELISA, FACS |
| 12-9065 | Anti-CD70 Antibody (vorsetuzumab biosimilar) | SGN-70 | Human IgG1 | ELISA, FACS |
| 12-9066 | Anti-PD-1 Antibody (pembrolizumab biosimilar) | MK-3475 | Human IgG4 | ELISA, FACS |
| 12-9067 | Anti-IL6 Antibody (siltuximab biosimilar) | CLL8 | | ELISA, FACS |
| 12-9068 | Anti-TIM3 Antibody (cobolimab biosimilar) | TSR-022 | Human IgG4 | ELISA, FACS |
| 12-9069 | Anti-PDL1 Antibody (atezolizumab biosimilar) | RG7446 | Human IgG1 | ELISA, FACS |
| 12-9070 | Anti-B7-H3 Antibody (enoblituzumab biosimilar) | MGA271 | Human IgG1 | ELISA, FACS |
| 12-9071 | Anti-SARS-CoV-2 Antibody | CB6 | Human IgG1 | ELISA, FACS |
| 12-9072 | Anti-ICOS Antibody (vopratelimab biosimilar) | JTX-2011 | Human IgG1 | ELISA, FACS |
| 12-9073 | Anti-SARS-CoV Antibody | CR3022 | Human IgG1 | ELISA, FACS |
| 12-9074 | Anti-CD138 Antibody (indatuximab ravtansine biosimilar) | BT062 | | FACS |
| 12-9075 | Anti-CD33 Antibody (gemtuzumab ozogamicin biosimilar) | CDP-771 | Human IgG4 | FACS |
| 12-9076 | Anti-BCMA Antibody | HuC11D5.3 | Human IgG1 | ELISA |
| 12-9077 | Anti-CD30 Antibody (brentuximab vedotin biosimilar) | SGN-35 | | ELISA |
| 12-9078 | Anti-CD27 Antibody (varlilumab biosimilar) | 1F5 | Human IgG1 | ELISA |
| 12-9079 | Anti-EPHA3 Antibody (ifabotuzumab biosimilar) | KB004 | Human IgG1 | ELISA |
| 12-9080 | Anti-CD40 Antibody (iscalimab biosimilar) | CFZ-533 | Human IgG1 | ELISA |
| 12-9081 | Anti-Mesothelin Antibody (amatuximab biosimilar) | MORAb-009 | IgG1 | ELISA |
| 12-9082 | Anti-CTLA4 Antibody (ipilimumab biosimilar) | MDX-CTLA-4 | Human IgG1 | ELISA |
| 12-9083 | Anti-Trop2 Antibody (sacituzumab govitecan biosimilar) | IMMU-132 | Human IgG1 | ELISA, FACS |
| 12-9084 | Anti-TIGIT Antibody (etigilimab biosimilar) | OMP-313M32 | Human IgG1 | ELISA |
| 12-9085 | Anti-CD20 (rituximab biosimilar) | MS4A1 | | FACS |
| 12-9086 | Anti-TIGIT Antibody (tiragolumab biosimilar) | MTIG-7192-A | Human IgG1 | ELISA |
| 12-9087 | Anti-TIGIT Antibody ((vibostolimab biosimilar) | MK-7684 | Human IgG1 | ELISA |
| 12-9088 | Anti-BCMA Antibody (belantamab biosimilar) | J6M0 | Human IgG1 | ELISA |
| 12-9089 | Anti-CD22 Antibody (pinatuzumab biosimilar) | FCU2803 | Human IgG1 | ELISA, FACS |
| 12-9090 | Anti-CD52 Antibody (alemtuzumab biosimilar) | Campath-1H | Human IgG1 | FACS |
| 12-9091 | Anti-TweakR Antibody (enavatuzumab biosimilar) | PDL 192 | Human IgG1 | ELISA |
| 12-9092 | Anti-TNFRSF10B Antibody (tigatuzumab biosimilar) | GEN-1029 | Human IgG1 | ELISA |
| 12-9093 | Anti-AXL Antibody (enapotamab biosimilar) | HuMax-AXL-ADC | Human IgG1 | ELISA, FACS |
| 12-9094 | Anti-EGFR Antibody (Cetuximab biosimilar) | Fab C225 | | ELISA |
| 12-9095 | Anti-CEACAM5 Antibody (labetuzumab biosimilar) | IMMU-130 | Human IgG1 | ELISA |
| 12-9096 | Anti-ICAM1 Antibody (bersanlimab biosimilar) | BI-505 | Human IgG1 | ELISA |
| 12-9097 | Anti-4-1BB Antibody (utomilumab biosimilar) | PF-2566 | Human IgG2 | ELISA |
| 12-9098 | Anti-IL17RA Antibody (brodalumab biosimilar) | AMG827 | Human IgG2 | ELISA, FACS |
| 12-9099 | Anti-NKG2D Antibody (tesnatilimab biosimilar) | JNJ-64304500 | Human IgG4 | ELISA |
| 12-9100 | Anti-CA9 Antibody (girentuximab biosimilar) | WX-G250 | | ELISA, FACS |
| 12-9101 | Anti-IL6R Antibody (tocilizumab biosimilar) | MRA | Human IgG1 | ELISA, FACS |
| 12-9102 | Anti-CD40L Antibody (ruplizumab biosimilar) | hu5c8 | Human IgG1 | ELISA, FACS |
| 12-9103 | Anti-IL2RA Antibody (basiliximab biosimilar) | CHI621 | | ELISA, FACS |
| 12-9104 | Anti-BAFF Antibody (belimumab biosimilar) | LymphoStat-B | Human IgG1 | ELISA |

Monoclonal Antibodies

| Cat. No. | Product Name | Clone | Isotype | Application |
|----------|---|-----------|-------------|-------------|
| 12-9105 | Anti-BAFFR Antibody (ianalumab biosimilar) | VAY-736 | Human IgG1 | ELISA, FACS |
| 12-9106 | Anti-CD37 Antibody (naratuximab biosimilar) | IMGN-529 | | FACS |
| 12-8001 | Anti-Human HER-2 (Trastuzumab) | 4D5-8 | Human IgG1k | ELISA |
| 12-8002 | Anti-Human HER-2 (Trastuzumab) -APC | 4D5-8 | Human IgG1k | FACS |
| 12-8003 | Anti-Human HER-2 (Trastuzumab) -Biotin | 4D5-8 | Human IgG1k | ELISA |
| 12-8004 | Anti-Human HER-2 (Trastuzumab) -Dylight® 488 | 4D5-8 | Human IgG1k | FACS |
| 12-8005 | Anti-Human HER-2 (Trastuzumab) -HRP | 4D5-8 | Human IgG1k | ELISA |
| 12-8006 | Anti-Human HER-2 (Trastuzumab) -PE | 4D5-8 | Human IgG1k | FACS |
| 12-8007 | Anti-Human HER-2 (Trastuzumab) -Fc Muted™ | 4D5-8 | Human IgG1 | ELISA |
| 12-8008 | Anti-Human HER-2 (Trastuzumab) -Fc Muted™ Biotin | 4D5-8 | Human IgG1 | ELISA |
| 12-8009 | Anti-Human HER-2 (Trastuzumab) -Fc Muted™ HRP | 4D5-8 | Human IgG1 | ELISA |
| 12-8011 | Anti-Human CD11a (Efalizumab) -APC | hu1124 | Human IgG1k | FA |
| 12-8012 | Anti-Human CD11a (Efalizumab) -Biotin | hu1124 | Human IgG1k | ELISA |
| 12-8013 | Anti-Human CD11a (Efalizumab) -Dylight® 488 | hu1124 | Human IgG1k | FA |
| 12-8014 | Anti-Human CD11a (Efalizumab) -HRP | hu1124 | Human IgG1k | ELISA |
| 12-8015 | Anti-Human CD11a (Efalizumab) -PE | hu1124 | Human IgG1k | FA |
| 12-8016 | Anti-Human CD11a (Efalizumab) -Fc Muted™ | hu1124 | Human IgG1k | |
| 12-8017 | Anti-Human CD11a (Efalizumab) -Fc Muted™ Biotin | hu1124 | Human IgG1k | ELISA |
| 12-8018 | Anti-Human CD11a (Efalizumab) -Fc Muted™ HRP | hu1124 | Human IgG1k | ELISA |
| 12-8019 | Anti-Human CD194 (CCR4) (Mogamulizumab) | KW-0761 | Human IgG1k | |
| 12-8020 | Anti-Human CD194 (CCR4) (Mogamulizumab) -Biotin | KW-0761 | Human IgG1k | ELISA |
| 12-8021 | Anti-Human CD194 (CCR4) (Mogamulizumab) -HRP | KW-0761 | Human IgG1k | ELISA |
| 12-8022 | Anti-Human CD194 (CCR4) (Mogamulizumab) -Fc Muted™ | KW-0761 | Human IgG1k | |
| 12-8023 | Anti-Human CD194 (CCR4) (Mogamulizumab) -Fc Muted™ Biotin | KW-0761 | Human IgG1k | ELISA |
| 12-8024 | Anti-Human CD194 (CCR4) (Mogamulizumab) -Fc Muted™ HRP | KW-0761 | Human IgG1k | ELISA |
| 12-8025 | Anti-Human CD20 (Rituximab) | 10F381 | Human IgG1k | FACS |
| 12-8026 | Anti-Human CD20 (Rituximab) -Dylight® 488 | 10F381 | Human IgG1k | FACS |
| 12-8027 | Anti-Human CD20 (Rituximab) -PE | 10F381 | Human IgG1k | FACS |
| 12-8028 | Anti-Human CD20 (Rituximab) APC | 10F381 | Human IgG1k | FACS |
| 12-8029 | Anti-Human CD20 (Rituximab) -Fc Muted™ | 10F381 | Human IgG1k | FACS |
| 12-8030 | Anti-Human CD257 (BAFF) (Tabalumab) | Tabalumab | Human IgG1k | ELISA |
| 12-8031 | Anti-Human CD257 (BAFF) (Tabalumab) -Biotin | Tabalumab | Human IgG1k | ELISA |
| 12-8032 | Anti-Human CD257 (BAFF) (Tabalumab) -Dylight® 488 | Tabalumab | Human IgG1k | FA |
| 12-8033 | Anti-Human CD257 (BAFF) (Tabalumab) -PE | Tabalumab | Human IgG1k | FA |
| 12-8034 | Anti-Human CD257 (BAFF) (Tabalumab) -Fc Muted™ | Tabalumab | Human IgG1k | ELISA |
| 12-8035 | Anti-Human CD257 (BAFF) (Tabalumab) -Fc Muted™ Biotin | Tabalumab | Human IgG1k | ELISA |
| 12-8036 | Anti-Human CD257 (BAFF) (Tabalumab) -Fc Muted™ HRP | Tabalumab | Human IgG1k | ELISA |
| 12-8037 | Anti-Human CD279 (PD-1) (Nivolumab) | 5C4.B8 | Human IgG1k | |
| 12-8038 | Anti-Human CD279 (PD-1) (Nivolumab) -APC | 5C4.B8 | | FACS |
| 12-8039 | Anti-Human CD279 (PD-1) (Nivolumab) -Dylight® 488 | 5C4.B8 | Human IgG1k | FA |
| 12-8040 | Anti-Human CD279 (PD-1) (Nivolumab) -PE | 5C4.B8 | Human IgG1k | FA |
| 12-8041 | Anti-Human CD279 (PD-1) (Nivolumab) -Fc Muted™ | 5C4.B8 | Human IgG1k | |
| 12-8042 | Anti-Human CD49D (Integrin alpha 4) (Natalizumab) | Hu114 | Human IgG1k | FACS |
| 12-8043 | Anti-Human CD49D (Integrin alpha 4) (Natalizumab) -APC | Hu114 | Human IgG1k | FACS |

Monoclonal Antibodies

| Cat. No. | Product Name | Clone | Isotype | Application |
|----------|---|------------|------------------|-------------|
| 12-8044 | Anti-Human CD49D (Integrin alpha 4) (Natalizumab) -Dylight® 488 | Hu114 | Human IgG1k | FACS |
| 12-8045 | Anti-Human CD49D (Integrin alpha 4) (Natalizumab) -PE | Hu114 | Human IgG1k | FACS |
| 12-8046 | Anti-Human CD49D (Integrin alpha 4) (Natalizumab) -Fc Muted™ | Hu114 | Human IgG1k | FACS |
| 12-8047 | Anti-Human CD52 (Alemtuzumab) | Campath-1H | Human IgG1k | ELISA |
| 12-8048 | Anti-Human CD52 (Alemtuzumab) -APC | Campath-1H | Human IgG1k | FA |
| 12-8049 | Anti-Human CD52 (Alemtuzumab) -Biotin | Campath-1H | Human IgG1k | ELISA |
| 12-8050 | Anti-Human CD52 (Alemtuzumab) -HRP | Campath-1H | Human IgG1k | ELISA |
| 12-8051 | Anti-Human CD52 (Alemtuzumab) -PE | Campath-1H | Human IgG1k | FA |
| 12-8052 | Anti-Human CD52 (Alemtuzumab) -Fc Muted™ | Campath-1H | Human IgG1k | ELISA |
| 12-8053 | Anti-Human CD52 (Alemtuzumab) -Fc Muted™ HRP | Campath-1H | Human IgG1k | ELISA |
| 12-8054 | Anti-Human CTLA-4 (Ipilimumab) | MDX-010 | Human IgG1k | |
| 12-8055 | Anti-Human CTLA-4 (Ipilimumab) -Biotin | MDX-010 | Human IgG1k | ELISA |
| 12-8056 | Anti-Human CTLA-4 (Ipilimumab) -HRP | MDX-010 | Human IgG1k | ELISA |
| 12-8057 | Anti-Human CTLA-4 (Ipilimumab) -Fc Muted™ | MDX-010 | Human IgG1k | |
| 12-8058 | Anti-Human CTLA-4 (Ipilimumab) -Fc Muted™ Biotin | MDX-010 | Human IgG1k | ELISA |
| 12-8059 | Anti-Human CTLA-4 (Ipilimumab) -Fc Muted™ HRP | MDX-010 | Human IgG1k | ELISA |
| 12-8060 | Anti-Human DR5 (Drozitumab) | PRO95780 | Human IgG1lambda | ELISA |
| 12-8061 | Anti-Human DR5 (Drozitumab) -APC | PRO95780 | Human IgG1lambda | FA |
| 12-8062 | Anti-Human DR5 (Drozitumab) -Dylight® 488 | PRO95780 | Human IgG1lambda | FA |
| 12-8063 | Anti-Human DR5 (Drozitumab) -HRP | PRO95780 | Human IgG1lambda | ELISA |
| 12-8064 | Anti-Human DR5 (Drozitumab) -PE | PRO95780 | Human IgG1lambda | FA |
| 12-8065 | Anti-Human DR5 (Drozitumab) -Fc Muted™ | PRO95780 | Human IgG1lambda | ELISA |
| 12-8066 | Anti-Human DR5 (Drozitumab) -Fc Muted™ Biotin | PRO95780 | Human IgG1lambda | ELISA |
| 12-8067 | Anti-Human DR5 (Drozitumab) -Fc Muted™ HRP | PRO95780 | | ELISA |
| 12-8068 | Anti-Human EGFR (Cetuximab) | C225 | Human IgG1k | |
| 12-8069 | Anti-Human EGFR (Cetuximab) -Fc Muted™ | C225 | Human IgG1k | |
| 12-8070 | Anti-Human IL 12/23 (Briakinumab) | ABT-874 | Human IgG1lambda | |
| 12-8071 | Anti-Human IL 12/23 (Briakinumab) -APC | ABT-874 | Human IgG1lambda | FA |
| 12-8072 | Anti-Human IL 12/23 (Briakinumab) -Biotin | ABT-874 | Human IgG1lambda | ELISA |
| 12-8073 | Anti-Human IL 12/23 (Briakinumab) -HRP | ABT-874 | Human IgG1lambda | ELISA |
| 12-8075 | Anti-Human IL 12/23 (Briakinumab) Dylight® 488 | ABT-874 | Human IgG1lambda | FA |
| 12-8076 | Anti-Human IL 12/23 (Briakinumab) -Fc Muted™ | ABT-874 | Human IgG1lambda | |
| 12-8077 | Anti-Human IL 12/23 (Briakinumab) -Fc Muted™ Biotin | ABT-874 | Human IgG1lambda | ELISA |
| 12-8078 | Anti-Human IL 12/23 (Briakinumab) -Fc Muted™ HRP | ABT-874 | Human IgG1lambda | ELISA |
| 12-8079 | Anti-Human IL-2R alpha (CD25) (Basiliximab) | Hu107 | Human IgG1k | |
| 12-8080 | Anti-Human IL-2R alpha (CD25) (Basiliximab) -APC | Hu107 | Human IgG1k | FACS |
| 12-8081 | Anti-Human IL-2R alpha (CD25) (Basiliximab) -Dylight® 488 | Hu107 | Human IgG1k | FACS |
| 12-8082 | Anti-Human IL-2R alpha (CD25) (Basiliximab) -PE | Hu107 | Human IgG1k | FACS |
| 12-8083 | Anti-Human IL-2R alpha (CD25) (Basiliximab) -Fc Muted™ | Hu107 | Human IgG1k | |
| 12-8084 | Anti-Human IL-6 (Sarilumab) | Hu137 | Human IgG1k | |
| 12-8085 | Anti-Human IL-6 (Sarilumab) -APC | Hu137 | Human IgG1k | FA |
| 12-8086 | Anti-Human IL-6 (Sarilumab) -Biotin | Hu137 | Human IgG1k | ELISA |
| 12-8087 | Anti-Human IL-6 (Sarilumab) -HRP | Hu137 | Human IgG1k | ELISA |
| 12-8088 | Anti-Human IL-6 (Sarilumab) -PE | Hu137 | Human IgG1k | FA |

Monoclonal Antibodies

| Cat. No. | Product Name | Clone | Isotype | Application |
|------------|--|--------|-------------|-------------------------|
| 12-8089 | Anti-Human IL-6 (Sarilumab) Dylight® 488 | Hu137 | Human IgG1k | FA |
| 12-8090 | Anti-Human IL-6 (Sarilumab) -Fc Muted™ | Hu137 | Human IgG1k | |
| 12-8091 | Anti-Human IL-6 (Sarilumab) -Fc Muted™ Biotin | Hu137 | Human IgG1k | ELISA |
| 12-8092 | Anti-Human IL-6 (Sarilumab) -Fc Muted™ HRP | Hu137 | Human IgG1k | ELISA |
| 12-8093 | Anti-Human OX40L (Oxelumab) | R4930 | Human IgG1k | |
| 12-8094 | Anti-Human OX40L (Oxelumab) -APC | R4930 | Human IgG1k | FA |
| 12-8095 | Anti-Human OX40L (Oxelumab) -Dylight® 488 | R4930 | Human IgG1k | FA |
| 12-8096 | Anti-Human OX40L (Oxelumab) -PE | R4930 | Human IgG1k | FA |
| 12-8097 | Anti-Human OX40L (Oxelumab) -Fc Muted™ | R4930 | Human IgG1k | |
| 12-8098 | Anti-Human TNF alpha (Adalimumab)clone D2E7 | D2E7 | Human IgG1k | |
| 12-8099 | Anti-Human TNF alpha (Adalimumab) -APC | D2E7 | Human IgG1k | FA |
| 12-8100 | Anti-Human TNF alpha (Adalimumab) -Biotin | D2E7 | Human IgG1k | ELISA |
| 12-8101 | Anti-Human TNF alpha (Adalimumab) -Dylight 488® | D2E7 | Human IgG1k | FA |
| 12-8102 | Anti-Human TNF alpha (Adalimumab) -HRP | D2E7 | Human IgG1k | ELISA |
| 12-8103 | Anti-Human TNF alpha (Adalimumab) -PE | D2E7 | Human IgG1k | FA |
| 12-8104 | Anti-Human TNF alpha (Adalimumab) -Fc Muted™ | D2E7 | Human IgG1k | |
| 12-8105 | Anti-Human TNF alpha (Adalimumab) -Fc Muted™ Biotin | D2E7 | Human IgG1k | ELISA |
| 12-8106 | Anti-Human TNF alpha (Adalimumab) -Fc Muted™ HRP | D2E7 | Human IgG1k | ELISA |
| 12-8107 | Anti-Human VEGF (Bevacizumab) | A4.6.1 | Human IgG1k | |
| 12-8108 | Anti-Human VEGF (Bevacizumab) -Biotin | A4.6.1 | Human IgG1k | ELISA |
| 12-8109 | Anti-Human VEGF (Bevacizumab) -HRP | A4.6.1 | Human IgG1k | ELISA |
| 12-8110 | Anti-Human VEGF (Bevacizumab) -Fc Muted™ | A4.6.1 | Human IgG1k | |
| 12-8111 | Anti-Human VEGF (Bevacizumab) -Fc Muted™ Biotin | A4.6.1 | Human IgG1k | ELISA |
| 12-8112 | Anti-Human VEGF (Bevacizumab) -Fc Muted™ HRP | A4.6.1 | Human IgG1k | ELISA |
| 12-8010 | Anti-Human CD11a (Efalizumab) | hu1124 | Human IgG1k | FA, ELISA, IHC, FACS |
| 12-9107 | Anti-CCR8 antibody (DM197), Rabbit mAb | DM197 | Rabbit IgG | ELISA, FACS |
| 12-9108 | Anti-CCR8 antibody (DM196), Rabbit mAb | DM196 | Rabbit IgG | ELISA, FACS |
| 12-9109 | Anti-CCR8 antibody (DM195), Rabbit mAb | DM195 | Rabbit IgG | ELISA, FACS |
| 12-9110 | Anti-CCR8 antibody (DM180), Rabbit mAb | DM180 | Rabbit IgG | ELISA, FACS |
| 12-9112 | Recombinant anti-human-IL-1 beta Antibody (Canakinumab Biosimilar) | | Human IgG1 | FA, ELISA, ICC/IF, FACS |
| 12-9113 | Anti-ERBB2 (trastuzumab biosimilar) mAb | | IgG1 | ELISA |
| 12-9113-50 | Anti-ERBB2 (trastuzumab biosimilar) mAb | | IgG1 | ELISA |
| 12-9114 | Anti-CB1 (nimacimab biosimilar) mAb | | IgG4 | |
| 12-9114-50 | Anti-CB1 (nimacimab biosimilar) mAb | | IgG4 | |
| 12-9115 | Anti-CD47 (magrolimab biosimilar) mAb | | IgG1 | ELISA |
| 12-9115-50 | Anti-CD47 (magrolimab biosimilar) mAb | | IgG1 | ELISA |
| 12-9116 | Anti-CD19 (inebilizumab biosimilar) mAb | | IgG1 | |
| 12-9116-50 | Anti-CD19 (inebilizumab biosimilar) mAb | | IgG1 | |
| 12-9117 | Anti-IL-4RA (dupilumab biosimilar) mAb | | IgG4 | ELISA |
| 12-9117-50 | Anti-IL-4RA (dupilumab biosimilar) mAb | | IgG4 | ELISA |
| 12-9118 | Anti-OX40 (ivuxolimab biosimilar) mAb | | IgG2 | |
| 12-9118-50 | Anti-OX40 (ivuxolimab biosimilar) mAb | | IgG2 | |
| 12-9119 | Anti-BTLA (icatolimab biosimilar) mAb | | IgG4 | ELISA |
| 12-9119-50 | Anti-BTLA (icatolimab biosimilar) mAb | | IgG4 | ELISA |

Monoclonal Antibodies

| Cat. No. | Product Name | Clone | Isotype | Application |
|------------|--|-------|---------|-------------|
| 12-9120 | Anti-CSF1R (cabiralizumab biosimilar) mAb | | IgG4 | ELISA |
| 12-9120-50 | Anti-CSF1R (cabiralizumab biosimilar) mAb | | IgG4 | ELISA |
| 12-9121 | Anti-TNFa (Adalimumab biosimilar) mAb | | IgG1 | ELISA |
| 12-9121-50 | Anti-TNFa (Adalimumab biosimilar) mAb | | IgG1 | ELISA |
| 12-9122 | Anti-HER3 (patritumab biosimilar) mAb | | IgG1 | ELISA |
| 12-9122-50 | Anti-HER3 (patritumab biosimilar) mAb | | IgG1 | ELISA |
| 12-9123 | Anti-TNFSF11 (denosumab biosimilar) mAb | | IgG2 | |
| 12-9123-50 | Anti-TNFSF11 (denosumab biosimilar) mAb | | IgG2 | |
| 12-9124 | Anti-VEGFR2 (ramucirumab biosimilar) mAb | | IgG1 | |
| 12-9124-50 | Anti-VEGFR2 (ramucirumab biosimilar) mAb | | IgG1 | |
| 12-9125 | Anti-VEGFA (bevacizumab biosimilar) mAb | | IgG1 | ELISA |
| 12-9125-50 | Anti-VEGFA (bevacizumab biosimilar) mAb | | IgG1 | ELISA |
| 12-9126 | Anti-LAG3 (relatlimab biosimilar) mAb | | IgG4 | ELISA |
| 12-9126-50 | Anti-LAG3 (relatlimab biosimilar) mAb | | IgG4 | ELISA |
| 12-9127 | Anti-ADAM9 mAb | | IgG1 | |
| 12-9127-50 | Anti-ADAM9 mAb | | IgG1 | |
| 12-9128 | Anti-GITR/TNFRSF18 (ragifilimab) mAb | | IgG1 | |
| 12-9128-50 | Anti-GITR/TNFRSF18 (ragifilimab) mAb | | IgG1 | |
| 12-9129 | Anti-GUCY2C (indusatumab biosimilar) mAb | | IgG1 | |
| 12-9129-50 | Anti-GUCY2C (indusatumab biosimilar) mAb | | IgG1 | |
| 12-9130 | Anti-DLL3 (Rovalpituzumab Tesirine biosimilar) mAb | | IgG1 | |
| 12-9130-50 | Anti-DLL3 (Rovalpituzumab Tesirine biosimilar) mAb | | IgG1 | |
| 12-9131 | Anti-GPRC5D (Talquetamab biosimilar) mAb | | IgG4 | |
| 12-9131-50 | Anti-GPRC5D (Talquetamab biosimilar) mAb | | IgG4 | |
| 12-9132 | Anti-ROR1 (zilovetamab biosimilar) mAb | | IgG1 | ELISA |
| 12-9132-50 | Anti-ROR1 (zilovetamab biosimilar) mAb | | IgG1 | ELISA |
| 12-9133 | Anti-ITGA4 (natalizumab biosimilar) mAb | | IgG4 | |
| 12-9133-50 | Anti-ITGA4 (natalizumab biosimilar) mAb | | IgG4 | |
| 12-9134 | Anti-CLDN18.2 (zolbetuximab biosimilar) | | IgG1 | |
| 12-9134-50 | Anti-CLDN18.2 (zolbetuximab biosimilar) | | IgG1 | |
| 12-9135 | Anti-CD47 (lempzoparlimab biosimilar) mAb | | IgG4 | ELISA |
| 12-9135-50 | Anti-CD47 (lempzoparlimab biosimilar) mAb | | IgG4 | ELISA |
| 12-9136 | Anti-SELP (crizanlizumab biosimilar) mAb | | IgG2 | |
| 12-9136-50 | Anti-SELP (crizanlizumab biosimilar) mAb | | IgG2 | |
| 12-9137 | Anti-B7-H4 (alsevalimab biosimilar) mAb | | IgG1 | ELISA |
| 12-9137-50 | Anti-B7-H4 (alsevalimab biosimilar) mAb | | IgG1 | ELISA |
| 12-9138 | Anti-TSHR (M22) mAb | M22 | IgG1 | |
| 12-9138-50 | Anti-TSHR (M22) mAb | M22 | IgG1 | |
| 12-9139 | Anti-TSHR (K1-70) mAb | K1-70 | IgG1 | |
| 12-9139-50 | Anti-TSHR (K1-70) mAb | K1-70 | IgG1 | |
| 12-9140 | Anti-IFNAR1 (anifrolumab biosimilar) mAb | | IgG1 | ELISA, FACS |
| 12-9140-50 | Anti-IFNAR1 (anifrolumab biosimilar) mAb | | IgG1 | ELISA, FACS |
| 12-9141 | Anti-MST1R (narnatumab biosimilar) mAb | | IgG1 | ELISA |
| 12-9141-50 | Anti-MST1R (narnatumab biosimilar) mAb | | IgG1 | ELISA |

Monoclonal Antibodies

| Cat. No. | Product Name | Clone | Isotype | Application |
|------------|--|---------|--------------|-------------|
| 12-9142 | Anti-NRP1 (vesencumab biosimilar) mAb | | IgG1 | FACS |
| 12-9142-50 | Anti-NRP1 (vesencumab biosimilar) mAb | | IgG1 | FACS |
| 12-9143 | Anti-CSAR1 (avdoralimab biosimilar) mAb | | IgG1 | FACS |
| 12-9143-50 | Anti-CSAR1 (avdoralimab biosimilar) mAb | | IgG1 | FACS |
| 12-9144 | Anti-IL9 (enokizumab biosimilar) mAb | | IgG1 | ELISA, FACS |
| 12-9144-50 | Anti-IL9 (enokizumab biosimilar) mAb | | IgG1 | ELISA, FACS |
| 12-9145 | Anti-F3 (tisotumab biosimilar) mAb | | IgG1 | ELISA |
| 12-9145-50 | Anti-F3 (tisotumab biosimilar) mAb | | IgG1 | ELISA |
| 12-9146 | Anti-CCL2 (carlumab biosimilar) mAb | | IgG1 | ELISA, FACS |
| 12-9146-50 | Anti-CCL2 (carlumab biosimilar) mAb | | IgG1 | ELISA, FACS |
| 12-9147 | Anti-SSTR2 (tidutamab biosimilar) mAb | | IgG1 | ELISA, FACS |
| 12-9147-50 | Anti-SSTR2 (tidutamab biosimilar) mAb | | IgG1 | ELISA, FACS |
| 12-9148 | Anti-PSMA (rosopatamab biosimilar) mAb | | IgG1 | ELISA, FACS |
| 12-9148-50 | Anti-PSMA (rosopatamab biosimilar) mAb | | IgG1 | ELISA, FACS |
| 12-9149 | Anti-CD73 (uliledlimab biosimilar) mAb | | IgG1 | ELISA, FACS |
| 12-9149-50 | Anti-CD73 (uliledlimab biosimilar) mAb | | IgG1 | ELISA, FACS |
| 12-9150 | Anti-GM-CSF (plonmarlimab biosimilar) mAb | | IgG1 | ELISA, FACS |
| 12-9150-50 | Anti-GM-CSF (plonmarlimab biosimilar) mAb | | IgG1 | ELISA, FACS |
| 12-9151 | Anti-FLT1 (icrucumab biosimilar) mAb | | IgG1 | ELISA, FACS |
| 12-9151-50 | Anti-FLT1 (icrucumab biosimilar) mAb | | IgG1 | ELISA, FACS |
| 12-9152 | Anti-IL20 (fletikumab biosimilar) mAb | | IgG4 | FACS |
| 12-9152-50 | Anti-IL20 (fletikumab biosimilar) mAb | | IgG4 | FACS |
| 12-9153 | Anti-CXCL10 (eldelumab biosimilar) mAb | | IgG1 | ELISA, FACS |
| 12-9153-50 | Anti-CXCL10 (eldelumab biosimilar) mAb | | IgG1 | ELISA, FACS |
| 12-9154 | Anti-KIR2DL2 (lirilumab biosimilar) mAb | | IgG4 | FACS |
| 12-9154-50 | Anti-KIR2DL2 (lirilumab biosimilar) mAb | | IgG4 | FACS |
| 12-9155 | Anti-APP (aducanumab biosimilar) mAb | | IgG1 | FACS |
| 12-9155-50 | Anti-APP (aducanumab biosimilar) mAb | | IgG1 | FACS |
| 12-9156 | Anti-IL17A (Cosentyx) (secukinumab biosimilar) mAb | | IgG1 | FACS |
| 12-9156-50 | Anti-IL17A (Cosentyx) (secukinumab biosimilar) mAb | | IgG1 | FACS |
| 12-9157 | Anti-TFRC (pabinafusp alfa biosimilar) mAb | | IgG1 | FACS |
| 12-9157-50 | Anti-TFRC (pabinafusp alfa biosimilar) mAb | | IgG1 | FACS |
| 12-9158 | Anti-IFNG (emapalumab biosimilar) mAb | | IgG1 | FACS |
| 12-9158-50 | Anti-IFNG (emapalumab biosimilar) mAb | | IgG1 | FACS |
| 12-9159 | Anti-GCGR (volagidemab biosimilar) mAb | | IgG2 | FACS |
| 12-9159-50 | Anti-GCGR (volagidemab biosimilar) mAb | | IgG2 | FACS |
| 12-9160 | Anti-IL13 (tralokinumab biosimilar) mAb | | IgG4 | FACS |
| 12-9160-50 | Anti-IL13 (tralokinumab biosimilar) mAb | | IgG4 | FACS |
| 12-9161 | Anti-LILRB2 (MK-4830) mAb | MK-4830 | IgG4 | ELISA, FACS |
| 12-9161-50 | Anti-LILRB2 (MK-4830) mAb | MK-4830 | IgG4 | ELISA, FACS |
| 12-9162 | Anti-GPC3 (Hu9F2) mAb | Hu9F2 | IgG1 | ELISA |
| 12-9162-50 | Anti-GPC3 (Hu9F2) mAb | Hu9F2 | IgG1 | ELISA |
| 12-9163 | Anti-OSMR (vixarelimab biosimilar) mAb | | IgG4-lambda2 | FACS |
| 12-9163-50 | Anti-OSMR (vixarelimab biosimilar) mAb | | IgG4-lambda2 | FACS |

Biosimilar Product List

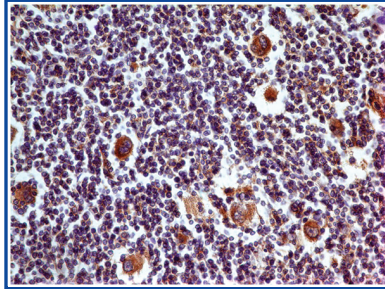
Monoclonal Antibodies

| Cat. No. | Product Name | Clone | Isotype | Application |
|------------|---|------------------|---------|-------------|
| 12-9164 | Anti-HTRA1 (galegenimab biosimilar) mAb | | IgG1 | FACS |
| 12-9164-50 | Anti-HTRA1 (galegenimab biosimilar) mAb | | IgG1 | FACS |
| 12-9165 | Anti-GP6 (glencocimab biosimilar) mAb | | IgG1 | FACS |
| 12-9165-50 | Anti-GP6 (glencocimab biosimilar) mAb | | IgG1 | FACS |
| 12-9166 | Anti-ENPP3 (Xencor) mAb | Xencor | IgG1 | FACS |
| 12-9166-50 | Anti-ENPP3 (Xencor) mAb | Xencor | IgG1 | FACS |
| 12-9167 | Anti-BTN3A1 (ICT 01) mAb | ICT 01 | IgG1 | FACS |
| 12-9167-50 | Anti-BTN3A1 (ICT 01) mAb | ICT 01 | IgG1 | FACS |
| 12-9168 | Anti-PDL1 (durvalumab biosimilar) mAb | | IgG1 | FACS |
| 12-9168-50 | Anti-PDL1 (durvalumab biosimilar) mAb | | IgG1 | FACS |
| 12-9169 | Anti-CD26 (begelomab biosimilar) mAb | | IgG2b | FACS |
| 12-9169-50 | Anti-CD26 (begelomab biosimilar) mAb | | IgG2b | FACS |
| 12-9170 | Anti-CLEC4C (litifilimab biosimilar) mAb | | IgG1 | ELISA, FACS |
| 12-9170-50 | Anti-CLEC4C (litifilimab biosimilar) mAb | | IgG1 | ELISA, FACS |
| 12-9172 | Anti-B7-H2 (prezalumab biosimilar) mAb | | IgG2 | FACS |
| 12-9172-50 | Anti-B7-H2 (prezalumab biosimilar) mAb | | IgG2 | FACS |
| 12-9173 | Anti-CLDN6 (IMAB027) mAb | IMAB027 | IgG1 | ELISA |
| 12-9173-50 | Anti-CLDN6 (IMAB027) mAb | IMAB027 | IgG1 | ELISA |
| 12-9174 | Anti-GPC3 (codrituzumab biosimilar) mAb | | IgG1 | ELISA, FACS |
| 12-9174-50 | Anti-GPC3 (codrituzumab biosimilar) mAb | | IgG1 | ELISA, FACS |
| 12-9175 | Anti-IL7RA (lusvertikimab biosimilar) mAb | | IgG4 | FACS |
| 12-9175-50 | Anti-IL7RA (lusvertikimab biosimilar) mAb | | IgG4 | FACS |
| 12-9176 | Anti-NKG2A (monalizumab biosimilar) mAb | | IgG4 | FACS |
| 12-9176-50 | Anti-NKG2A (monalizumab biosimilar) mAb | | IgG4 | FACS |
| 12-9177 | Anti-CCR4 (mogamulizumab biosimilar) mAb | | IgG1 | FACS |
| 12-9177-50 | Anti-CCR4 (mogamulizumab biosimilar) mAb | | IgG1 | FACS |
| 12-9178 | Anti-CCR2 (plozalizumab biosimilar) mAb | | IgG1 | FACS |
| 12-9178-50 | Anti-CCR2 (plozalizumab biosimilar) mAb | | IgG1 | FACS |
| 12-9179 | Anti-Nectin-4 (enfortumab biosimilar) mAb | | IgG1 | ELISA, FACS |
| 12-9179-50 | Anti-Nectin-4 (enfortumab biosimilar) mAb | | IgG1 | ELISA, FACS |
| 12-9180 | Anti-FCRL5 (cevostamab biosimilar without anti-CD3 portion) mAb | | IgG1 | ELISA, FACS |
| 12-9180-50 | Anti-FCRL5 (cevostamab biosimilar without anti-CD3 portion) mAb | | IgG1 | ELISA, FACS |
| 12-9181 | Anti-GDF15 (ponsegromab biosimilar) mAb | | IgG1 | FACS |
| 12-9181-50 | Anti-GDF15 (ponsegromab biosimilar) mAb | | IgG1 | FACS |
| 12-9182 | Anti-GFRA3 (nadecnemab biosimilar) mAb | | IgG4 | ELISA, FACS |
| 12-9182-50 | Anti-GFRA3 (nadecnemab biosimilar) mAb | | IgG4 | ELISA, FACS |
| 12-9183 | Anti-CD19 (FMC63 biosimilar) mAb | FMC63 biosimilar | IgG2a | FACS |
| 12-9183-50 | Anti-CD19 (FMC63 biosimilar) mAb | FMC63 biosimilar | IgG2a | FACS |
| 12-9184 | Anti-PCSK9 (bococizumab biosimilar) mAb | | IgG2 | FACS |
| 12-9184-50 | Anti-PCSK9 (bococizumab biosimilar) mAb | | IgG2 | FACS |
| 12-9185 | Anti-IL1A (bermekimab biosimilar) mAb | | IgG1 | ELISA, FACS |
| 12-9185-50 | Anti-IL1A (bermekimab biosimilar) mAb | | IgG1 | ELISA, FACS |
| 12-9186 | Anti-MIF (imalumab biosimilar) mAb | | IgG1 | ELISA |
| 12-9186-50 | Anti-MIF (imalumab biosimilar) mAb | | IgG1 | ELISA |

Monoclonal Antibodies

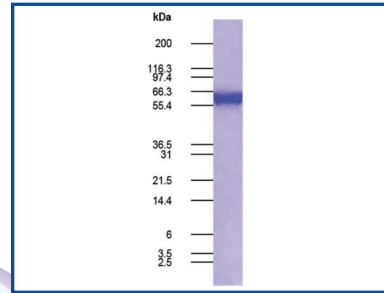
| Cat. No. | Product Name | Clone | Isotype | Application |
|-----------------|---|--------------|----------------|--------------------|
| 12-9187 | Anti-NOTCH3 (tarextumab biosimilar) mAb | | IgG2 | FACS |
| 12-9187-50 | Anti-NOTCH3 (tarextumab biosimilar) mAb | | IgG2 | FACS |
| 12-9188 | Anti-CEACAM6 (tinurilimab biosimilar) mAb | | IgG2 | ELISA, FACS |
| 12-9188-50 | Anti-CEACAM6 (tinurilimab biosimilar) mAb | | IgG2 | ELISA, FACS |
| 12-9189 | Anti-CXCR4 (ulocuplumab biosimilar) mAb | | IgG4 | FACS |
| 12-9189-50 | Anti-CXCR4 (ulocuplumab biosimilar) mAb | | IgG4 | FACS |
| 12-9190 | Anti-CD56 (lorvotuzumab biosimilar) mAb | | IgG1 | ELISA, FACS |
| 12-9190-50 | Anti-CD56 (lorvotuzumab biosimilar) mAb | | IgG1 | ELISA, FACS |
| 12-9191 | Anti-IL21 (avizakimab biosimilar) mAb | | IgG1 | ELISA |
| 12-9191-50 | Anti-IL21 (avizakimab biosimilar) mAb | | IgG1 | ELISA |
| 12-9192 | Anti-M-CSF (lacnotuzumab biosimilar) mAb | | IgG1 | ELISA, FACS |
| 12-9192-50 | Anti-M-CSF (lacnotuzumab biosimilar) mAb | | IgG1 | ELISA, FACS |
| 12-9193 | Anti-CCN2 (pamrevlumab biosimilar) mAb | | IgG1 | FACS |
| 12-9193-50 | Anti-CCN2 (pamrevlumab biosimilar) mAb | | IgG1 | FACS |
| 12-9194 | Anti-AMHR2 (murlentamab biosimilar) mAb | | IgG1 | ELISA, FACS |
| 12-9194-50 | Anti-AMHR2 (murlentamab biosimilar) mAb | | IgG1 | ELISA, FACS |
| 12-9195 | Anti-DKK1 (sirexatamab biosimilar) mAb | | IgG4 | FACS |
| 12-9195-50 | Anti-DKK1 (sirexatamab biosimilar) mAb | | IgG4 | FACS |
| 12-9196 | Anti-B7-H5 (onvatilimab biosimilar) mAb | | IgG1 | ELISA, FACS |
| 12-9196-50 | Anti-B7-H5 (onvatilimab biosimilar) mAb | | IgG1 | ELISA, FACS |
| 12-9197 | Anti-TSLP (tezepelumab biosimilar) mAb | | IgG2 | ELISA, FACS |
| 12-9197-50 | Anti-TSLP (tezepelumab biosimilar) mAb | | IgG2 | ELISA, FACS |
| 12-9198 | Anti-LIV-1 (ladiratuzumab biosimilar) mAb | | IgG1 | ELISA |
| 12-9198-50 | Anti-LIV-1 (ladiratuzumab biosimilar) mAb | | IgG1 | ELISA |
| 12-9199 | Anti-IL22 (fezakinumab biosimilar) mAb | | IgG1 | ELISA, FACS |
| 12-9199-50 | Anti-IL22 (fezakinumab biosimilar) mAb | | IgG1 | ELISA, FACS |
| 12-9200 | Anti-CCR8 (BMS 986340) mAb | BMS 986340 | IgG1 | ELISA, FACS |
| 12-9200-50 | Anti-CCR8 (BMS 986340) mAb | BMS 986340 | IgG1 | ELISA, FACS |
| 12-2002 | Anti-IL-17A (Taltz) (Ixekezumab biosimilar) mAb | | IgG4 | ELISA |
| 10-2002 | Recombinant anti- human ErbB2/HER2 Antibody (Trastuzumab) | ABM2A1G1 | IgG1 | FA, FACS |
| 10-2002-500 | Recombinant anti- human ErbB2/HER2 Antibody (Trastuzumab) | ABM2A1G1 | IgG1 | FA, FACS |
| | | | | |
| | | | | |
| | | | | |
| | | | | |
| | | | | |
| | | | | |
| | | | | |
| | | | | |
| | | | | |
| | | | | |
| | | | | |
| | | | | |
| | | | | |
| | | | | |
| | | | | |
| | | | | |
| | | | | |
| | | | | |
| | | | | |
| | | | | |
| | | | | |
| | | | | |

Monoclonal Antibody to PD-L1



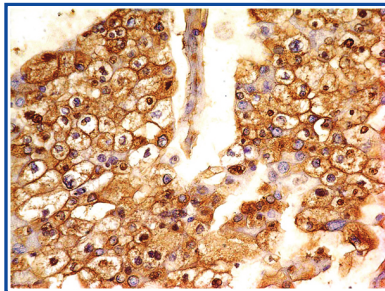
Product Code : 10-7562
Clone Name : ABM4E54
Application : IHC, FACS, WB
Reactivity : Human

PD-L1 Recombinant Fc fusion Protein



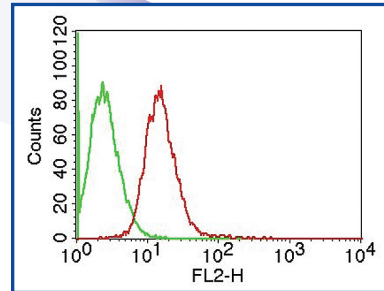
Product Code : 21-1001
Application : Func. Assay
Reactivity : Human
Host: CHO-K1 cell line

Monoclonal antibody to B7-H4



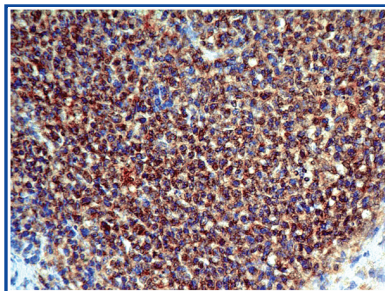
Product Code : 10-4172
Clone Name : ABM53A6
Application : IHC, FACS, WB
Reactivity : Human

Monoclonal Antibody to MSI-1



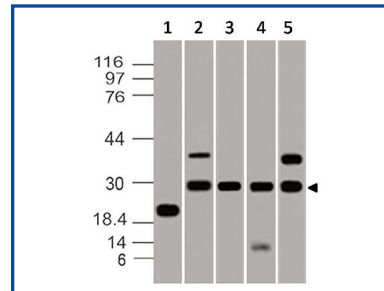
Product Code : 10-7615
Clone Name : ABM5D50
Application : FACS, WB
Reactivity : Human

Monoclonal Antibody to CD137



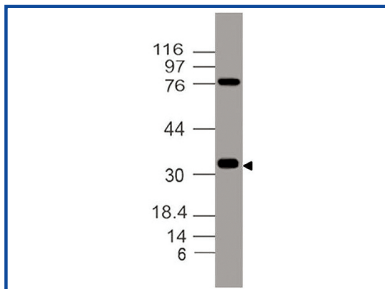
Product Code : 10-7620
Clone Name : ABM3D3.2E8
Application : IHC, WB
Reactivity : Human

Monoclonal Antibody to PD-L2



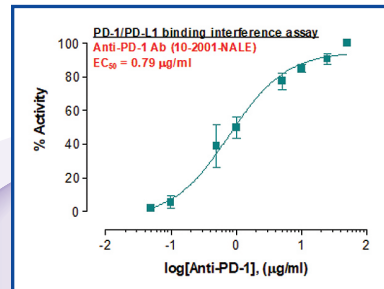
Product Code : 10-7631
Clone Name : ABM3D6.1G2
Application : WB
Reactivity : Human, Mouse

Monoclonal Antibody to Vista



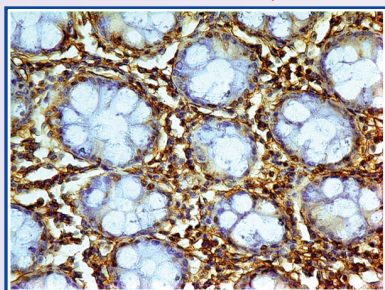
Product Code : 10-7617
Clone Name : ABM5C53
Application : WB
Reactivity : Human

Rec. PD-1 rabbit monoclonal Antibody



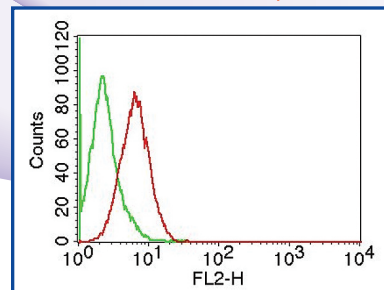
Product Code : 10-2001
Clone Name : ABMRR01
Application : FACS, WB
Reactivity : Human

Monoclonal Antibody to Galectin-1



Product Code : 10-7618
Clone Name : ABM5B54
Application : IHC, FACS, WB
Reactivity : Human, Mouse

Monoclonal antibody to CD5L



Product Code : 10-4180
Clone Name : ABM55F1
Application : FACS, WB
Reactivity : Human