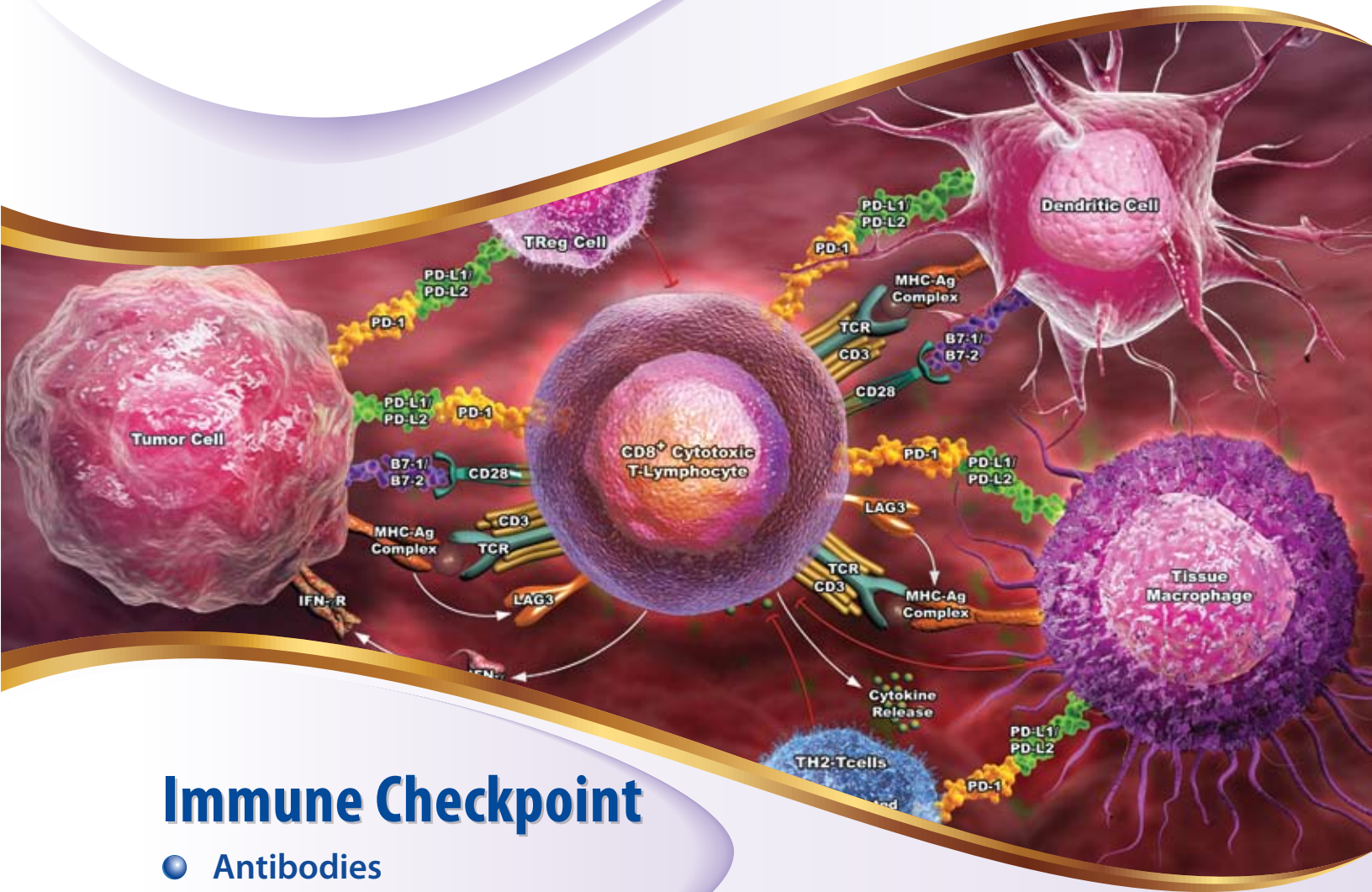




Better Reagents, Better Assays™

[www.abeomics.com](http://www.abeomics.com)



## Immune Checkpoint

- Antibodies
- Recombinant Proteins
- Stable Cell Lines
- ELISA Kits

9853 Pacific Heights Blvd. Suite D, San Diego, CA 92121 USA

Tel: +1-858-263-4982 | Fax: +1-858-247-7052 | Email: [support@abeomics.com](mailto:support@abeomics.com) | Web: [www.abeomics.com](http://www.abeomics.com)

## Antibodies

Cat. No.	Product Name	Clone	Isotype	Application	Reactivity
10-4172	B7-H4	ABM53A6	Mouse IgG2a, kappa	IHC,FACS,WB	H, M
43-1039	B7-H4	188	Rat IgG2b, kappa	FACS, FA	M
10-7620	CD137	ABM3D3.2E8	Mouse IgG1, kappa	IHC,FACS,WB	H
36-3431	CD137L	CD137L/1547	Mouse IgG2a, kappa	FACS, IHC	H
10-4803	CD155	4.24	Rat IgG2a, kappa	FA,WB	M
30-1540	CD160	BY55	Mouse IgM	FACS, IP	H
30-1537	CD200	OX-104	Mouse IgG1	FACS, IHC, FA	H
30-1195	CD27	LT27	Mouse IgG2a	FACS	H
43-1043	CD27	LG.3A10	Armenian Hamster IgG	FACS	H
10-4137	CD28	CB28	Mouse IgG1, kappa	IHC,FACS	H
36-3608	CD40	C40/2383	Mouse IgG2b, kappa	ELISA, FACS, IHC	H
36-3821	CD40	FGK45.5	Rat IgG2a, kappa	FACS, IF	M
30-1564	CD40L	24-31	Mouse IgG1	FACS, ICC, FA	H
10-4160	CD47	B6H12	Mouse IgG1, kappa	FACS	H
10-4176	CD48	ABM4h95	Mouse IgG2a	FACS	H
10-4144	CD70	BU69	Mouse IgG1, kappa	FACS	H
10-4108	CD80	ABM40G8	Mouse IgG2b, kappa	FACS,WB	H
10-4154	CD86	BU63	Mouse IgG1, kappa	FACS	H
10-3553	CD96	NK92.39	Mouse IgG1	FACS, FA	H
36-2128	CTLA4	L4P2F5.F10	Mouse IgG1, kappa	FACS, IF, WB	H, M, R
10-10020	Dc-Sign	ABM47B7	Mouse IgG2b, kappa	FACS,WB	H
10-7642	ICOS	7E.17G9	Rat IgG2b, kappa	FACS	M
10-7616	ICOSL	ABM5E52	Mouse IgG2b, kappa	FACS	H
10-7643	ICOSL	HK5.3	Rat IgG2a, kappa	FACS	M
45-1100	LAG3	LG.F9	Mouse IgG2a, kappa	ELISA	H
10-4804	LAG3	C9B7W	Rat IgG1	FA,IP,WB	M
10-7657	MHC class II	ABM56C9	Mouse IgG1, kappa	WB	H
36-3322	OX40	OX40/3108	Mouse IgG2c, kappa	ELISA, FACS, IF, IHC	H
36-3820	OX40	OX-86	Rat IgG1, kappa	FACS, IF	M
10-12513	PD-1	BSR1	Rabbit IgG	IHC	H
10-2001	PD-1	ABMRR01	Rabbit IgG	FACS, WB	H
10-7612	PD-1	ABM5F42	Rat IgG2b, kappa	FACS	M
10-7562	PD-L1	ABM4E54	Mouse IgG2a, kappa	IHC,FACS,WB	H
10-7562-F	PD-L1	ABM4E54	Mouse IgG2a, kappa	FACS	H
10-7562-NALE	PD-L1	ABM4E54	Mouse IgG2a, kappa	IHC,FACS,WB	H
10-7562-P	PD-L1	ABM4E54	Mouse IgG2a, kappa	FACS	H
10-7648	PD-L1	10F.9G2	Rat IgG2b, kappa	FACS	M
10-7631	PD-L2	ABM3D6.1G2	Mouse IgG2b, kappa	IHC,WB	M, H
10-7649	PD-L2	Ty25	Rat IgG2a, kappa	FACS,WB	M
10-7651	TIGHT	1G9	Mouse IgG1, kappa	FACS,WB	M
36-2212	TIGHT	TIGIT/3017	Mouse IgG2c, kappa	ELISA, FACS, IHC	H
10-4076	TIM-3	ABM31A8	Mouse IgG1, kappa	FACS	H
10-4079	TIM-3	ABM3F21	Rat IgG1, Kappa	FACS	M
10-7617	Vista	ABM5C53	Mouse IgG2b, kappa	WB, FACS	H

\* For more products please visit [www.abeomics.com](http://www.abeomics.com)

## Recombinant Proteins

Cat. No.	Product Name
21-1001	Human PD-L1 Fc fusion Protein (Active)
21-1001-B	Human PD-L1 Fc fusion Protein (Active) Biotin
32-7291	Human PD-L1/B7-H1/CD274 Protein (C-6His)
32-8673	Human PD-L1/B7-H1/CD274 Protein (C-mFc)
32-8700	Human PD-L1/B7-H1/CD274 Protein (C-Flag)
37-1160	Mouse PD-L1/B7-H1/CD274 Protein (His Tag)
32-7742	Human PD-L2/B7-DC/CD273 Protein (C-6His)
32-8570	Mouse PD-L2/B7-DC/CD273 Protein (C-Fc)
21-1002	Human CD80 Fc fusion Protein (Active)
21-1002-B	Human CD80 Fc fusion Protein (Active) Biotin
32-8629	Human B7-1/CD80 Protein (C-6His)
32-8818	Mouse B7-1/CD80 Protein (C-6His)
37-1023	Human CD86/B7-2 Protein (His Tag)
32-8894	Mouse B7-H2/ICOSLG Protein (C-6His)
32-7429	Human B7-H2/ICOSLG Protein (C-6His)
32-8630	Human B7-H3/CD276 Protein (C-6His)
32-8749	Mouse B7-H3/CD276 Protein (C-6His)
37-1252	Human B7-H4/B7S1 Protein (Fc Tag)
37-1331	Mouse B7-H4/B7S1 Protein (Fc Tag)
37-1307	Human B7-H5/VISTA Protein (ECD, Fc Tag)
32-8294	Human 4-1BBL/CD137L Protein(C-6His)
37-1162	Mouse 4-1BBL/CD137L Protein (His Tag)
37-1217	Human HVEM/TNFRSF14 Protein (Fc Tag)
37-1240	Mouse HVEM/TNFRSF14 Protein (His & Fc Tag)
32-8741	Mouse OX40 Ligand/ OX40L Protein (N-8His)
37-1301	Human OX-40L / TNFSF4 Protein (Fc Tag)
37-1121	Human CD70/CD27L/ TNFSF7 Protein (Fc Tag)
37-1375	Mouse CD70/CD27L/TNFSF7 Protein (Fc Tag)
32-3472	Human CD40 Protein (C-6His)
37-1321	Human TNFSF18 Protein (Fc Tag)
32-7547	Human PVR/CD155 Protein (C-6His)

Cat. No.	Product Name
37-1259	Human CD48/SLAMF2 Protein (His Tag)
37-1276	Human Galectin-9/LGALS9 Protein (Fc Tag)
32-8770	Human IDO/INDO Protein (N-6His)
37-1293	Human CD47 Protein (His Tag)
32-8846	Human BTN2A1 protein (C-6His)
32-7289	Human OX-2/CD200 Protein (C-6His)
37-1330	Human TL1A/TNFSF15 Protein (Fc Tag)
37-1170	Mouse PD-1/PDCD1 Protein (His Tag)
37-1223	Human PD-1/PDCD1 Protein (His & Fc Tag)
32-8748	Human PD-1/PDCD1 Protein (C93S Mutant, C-6His)
37-1133	Human CD28 Protein (Fc Tag)
32-8797	Human CTLA-4 Protein (C-6His)
32-8798	Mouse CTLA-4 Protein (C-6His)
32-7878	Human ICOS/CD278 Protein (C-Fc)
32-8931	Mouse ICOS/CD278 Protein (C-6His)
32-8514	Human 4-1BB/CD137 Protein (C-Fc-6His)
37-1190	Mouse CD137/4-1BB Protein (Fc Tag)
32-7511	Human BTLA/CD272 Protein (C-6His)
32-8750	Human LIGHT/HVEM-L Protein (N-6His)
37-1328	Human LAG3 Protein (Fc Tag)
32-8620	Mouse OX40/TNFRSF4/CD134 Protein (C-Fc)
32-8628	Human OX40/TNFRSF4/CD134 Protein (C-6His)
37-1043	Human CD27/TNFRSF7 Protein (His & Fc Tag)
37-1101	Human CD40L/CD154/TNFSF5 Protein (His Tag)
37-1347	Mouse CD40L/CD154/TNFSF5 Protein (Fc Tag)
37-1309	Human GITR/TNFRSF18 Protein (Fc Tag)
37-1270	Human TIGIT/VSTM3 Protein (Fc Tag)
37-1015	Human TIM-3/HAVCR2 Protein (His & Fc Tag)
37-1047	Human 2B4/SLAMF/CD244 Protein (Fc Tag)
37-1286	Human SIRP alpha/CD172a Protein (His Tag)
37-1279	Human CD200R1 Protein (His & Fc Tag)

## ELISA Kits

Cat. No.	Product Name	Description
90-2111	Human PD-1 Pre-Coated ELISA Kit	1X 96 well Format (96 tests)
90-2393	Human PD-L1 Pre-Coated ELISA Kit	1X 96 well Format (96 tests)
90-2319	Mouse PD-L1 Pre-Coated ELISA Kit	1X 96 well Format (96 tests)

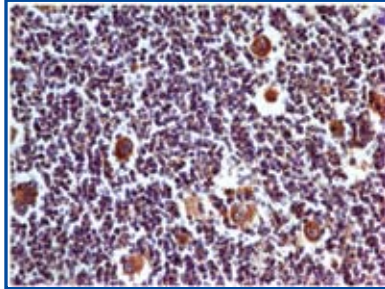
## Stable Cell Lines

Cat. No.	Product Name	Host	Description
14-500ACL	PD-1 Stable Cell Line	CHO-K1	Human Programmed Cell Death Protein -1 (PD-1/ CD279).
14-501ACL	PD-L1 Stable Cell Line	CHO-K1	Human Programmed Death- Ligand 1 (PD-L1/ CD275/ B7-H1).
14-502ACL	PD-L2 Stable Cell Line	CHO-K1	Human Programmed Death- Ligand 2 (PD-L2/ B7-DC/ CD273).

\* Please refer to our Reporter System booklet for Stable Cell Lines related to Immune Checkpoint Pathway.

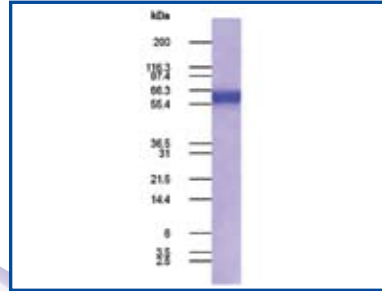


## Monoclonal Antibody to PD-L1



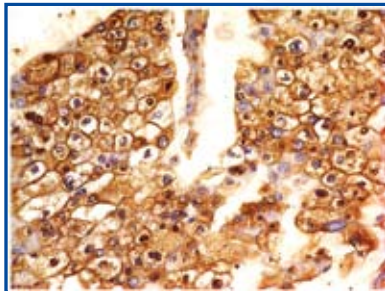
Product Code : 10-7562  
Clone Name : ABM4E54  
Application : IHC, FACS, WB  
Reactivity : Human

## PD-L1 Recombinant Fc fusion Protein



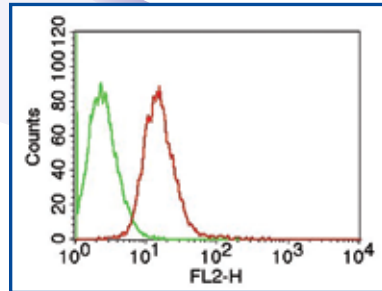
Product Code : 21-1001  
Application : Func. Assay  
Reactivity : Human  
Host: CHO-K1 cell line

## Monoclonal antibody to B7-H4



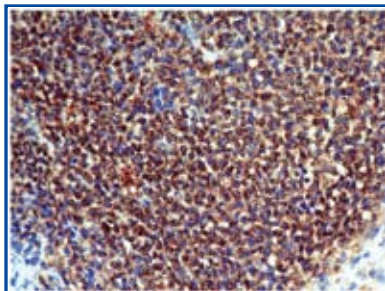
Product Code : 10-4172  
Clone Name : ABM53A6  
Application : IHC, FACS, WB  
Reactivity : Human

## Monoclonal Antibody to MSI-1



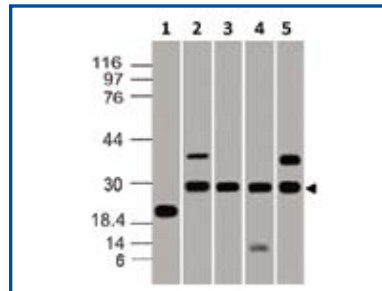
Product Code : 10-7615  
Clone Name : ABM5D50  
Application : FACS, WB  
Reactivity : Human

## Monoclonal Antibody to CD137



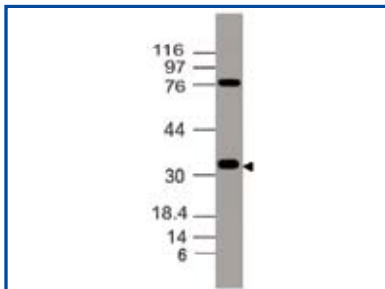
Product Code : 10-7620  
Clone Name : ABM3D3.2E8  
Application : IHC, WB  
Reactivity : Human

## Monoclonal Antibody to PD-L2



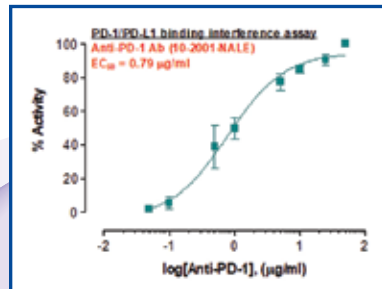
Product Code : 10-7631  
Clone Name : ABM3D6.1G2  
Application : WB  
Reactivity : Human, Mouse

## Monoclonal Antibody to Vista



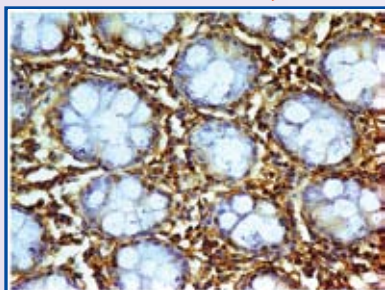
Product Code : 10-7617  
Clone Name : ABM5C53  
Application : WB  
Reactivity : Human

## Rec. PD-1 rabbit monoclonal Antibody



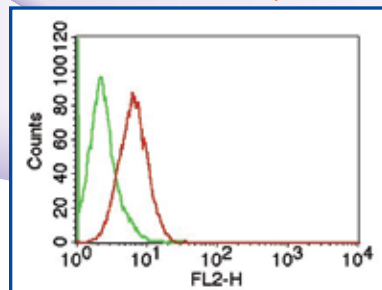
Product Code : 10-2001  
Clone Name : ABMRR01  
Application : FACS, WB  
Reactivity : Human

## Monoclonal Antibody to Galectin-1



Product Code : 10-7618  
Clone Name : ABM5B54  
Application : IHC, FACS, WB  
Reactivity : Human, Mouse

## Monoclonal antibody to CD5L



Product Code : 10-4180  
Clone Name : ABM55F1  
Application : FACS, WB  
Reactivity : Human