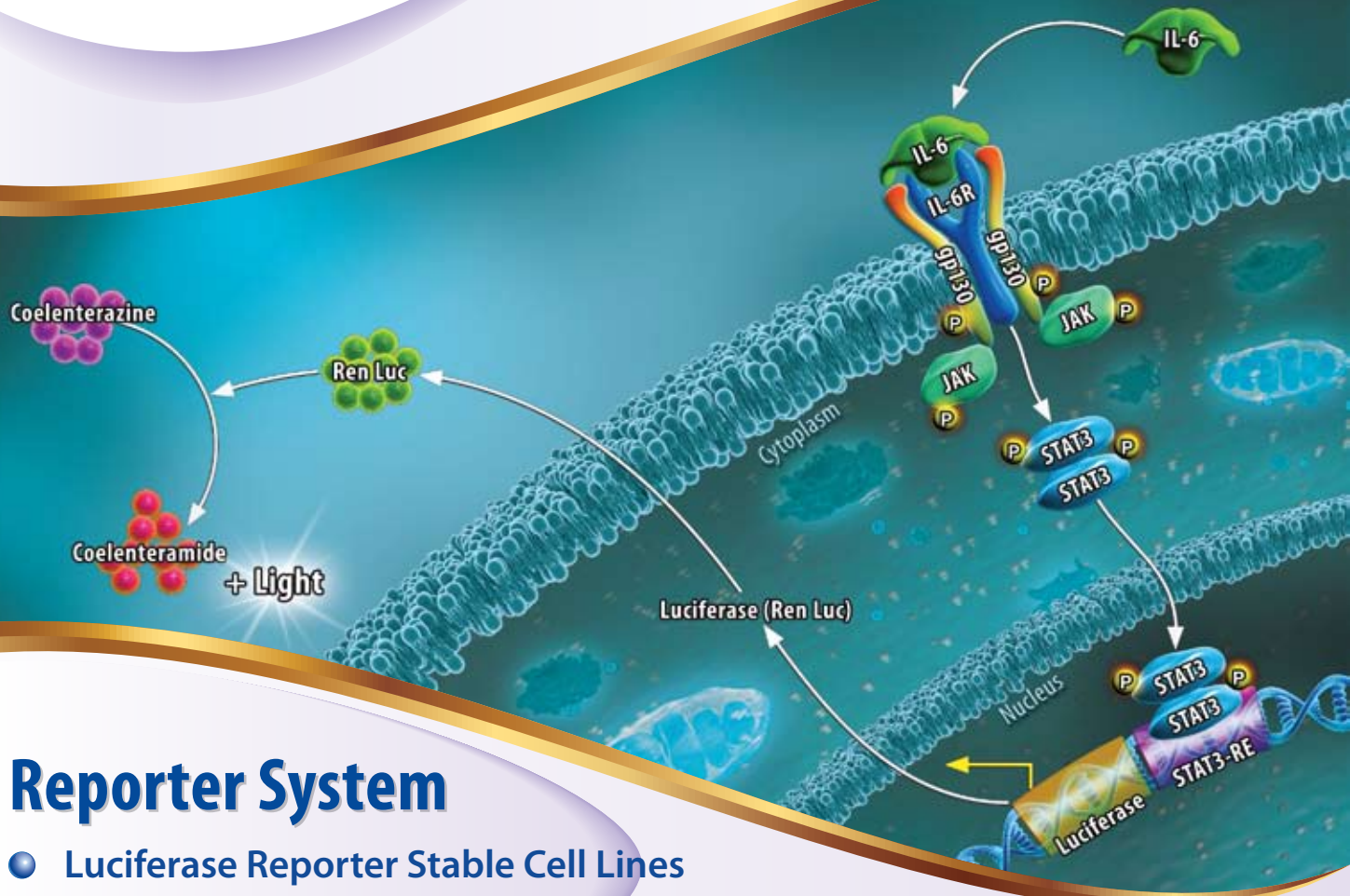




Better Reagents, Better Assays™

www.abeomics.com



Reporter System

- Luciferase Reporter Stable Cell Lines
- One-Step Luc Assay Kit
- Stable Cell Lines

9853 Pacific Heights Blvd. Suite D, San Diego, CA 92121 USA

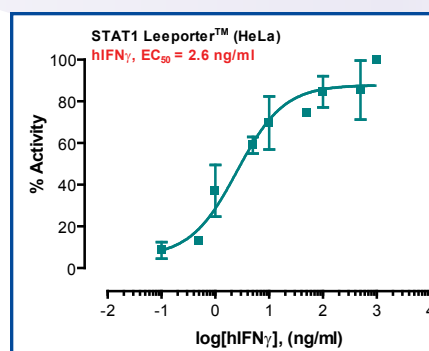
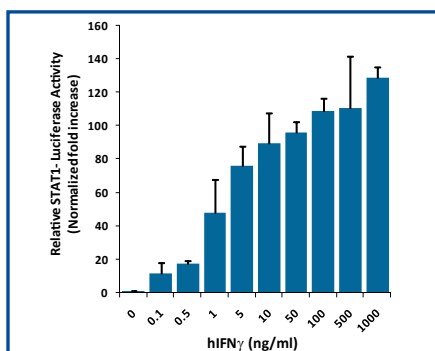
Tel: +1-858-263-4982 | Fax: +1-858-247-7052 | Email: support@abeomics.com | Web: www.abeomics.com

Reporter cell lines are used for cell-based assays for screening of drugs/compounds under the stimulatory or inhibitory effects. Abeomics have developed several engineered stable cell lines, where luciferase is used as a reporter gene, which is under the control of upstream promoters. These stable cell lines can be used to study stimulation or inhibitions of receptors, kinases and transcriptional factors.

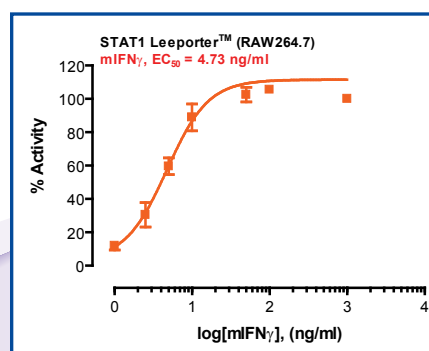
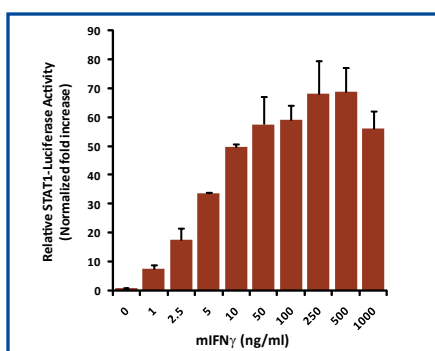
STAT Looporter™ Luciferase Reporter Cell Lines

STAT Looporter™ Luciferase Reporter Cell Lines as a tool for cancer therapeutic target screening: Signal transducer and activator of transcription (STAT) proteins are closely related with human cancers.

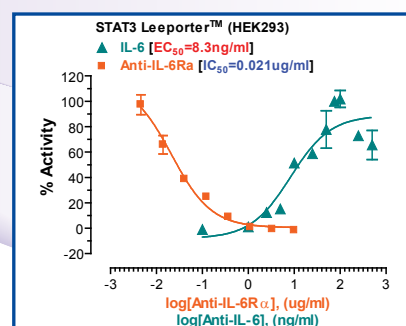
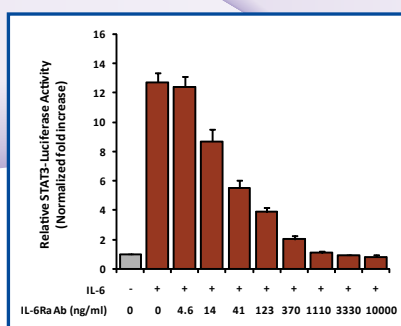
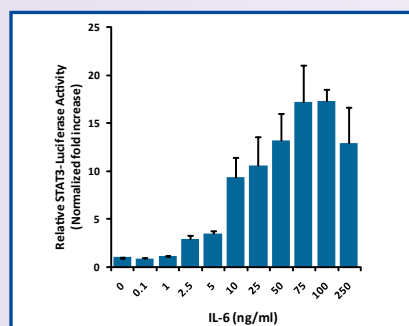
STAT1 ● STAT1 Looporter™ Luciferase Reporter – HeLa Cell Line (14-112ACL)



● STAT1 Looporter™ Luciferase Reporter – RAW264.7 Cell Line (14-113ACL)

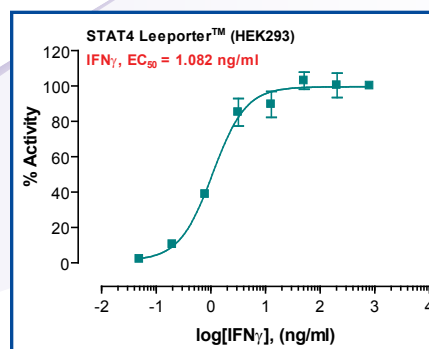
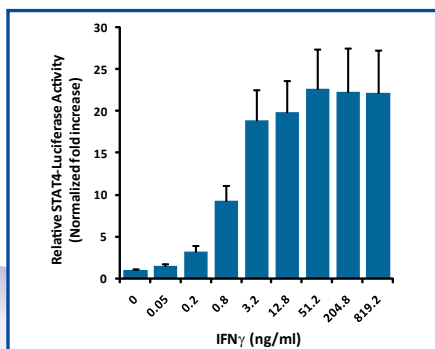


STAT3 ● STAT3 Looporter™ Luciferase Reporter – HEK293 Cell Line (14-114ACL)



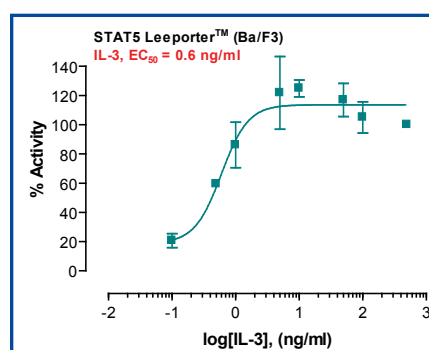
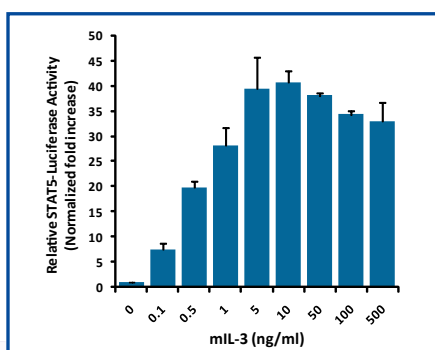
STAT4

● STAT4 Looporter™ Luciferase Reporter – HEK 293 Cell Line (14-140ACL)



STAT5

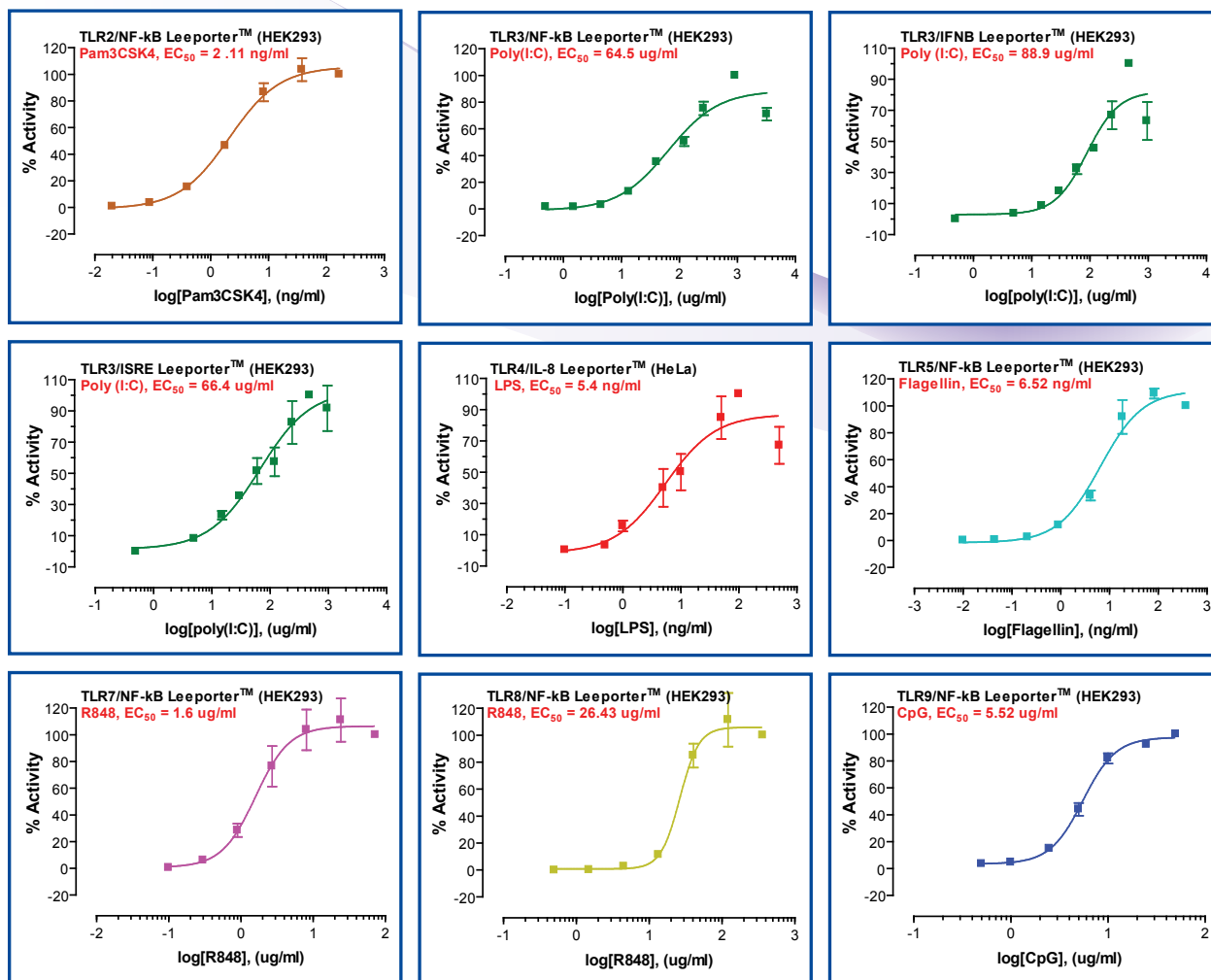
● STAT5 Looporter™ Luciferase Reporter – Ba/F3 Cell Line (14-135ACL)



STAT Reporter Cell Line list:

Product Name	Cat.No.	Host	Luciferase
STAT1 Looporter™ Luciferase Reporter Cell Line	14-112ACL	Hela	Renilla
STAT1 Looporter™ Luciferase Reporter Cell Line	14-113ACL	RAW 264.7	Renilla
STAT3 Looporter™ Luciferase Reporter Cell Line	14-114ACL	HEK 293	Renilla
STAT3 Looporter™ Luciferase Reporter Cell Line	14-147ACL	Ba/F3	Renilla
STAT3 Looporter™ Luciferase Reporter Cell Line	14-148ACL	RAW 264.7	Renilla
STAT4 Looporter™ Luciferase Reporter Cell Line	14-140ACL	HEK 293	Renilla
STAT4 Looporter™ Luciferase Reporter Cell Line	14-145ACL	Ba/F3	Renilla
STAT5 Looporter™ Luciferase Reporter Cell Line	14-135ACL	Ba/F3	Renilla
STAT6 Looporter™ Luciferase Reporter Cell Line	14-146ACL	Ba/F3	Renilla

TLR Lleeporter™ Luciferase Reporter Cell Lines as a tool for studying TLR signaling pathways and screening agonists or antagonists.

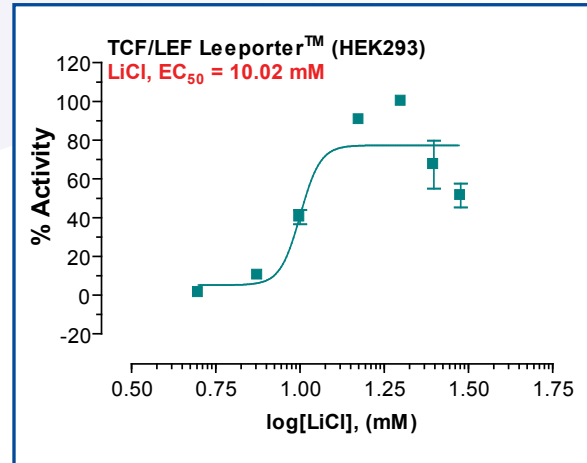
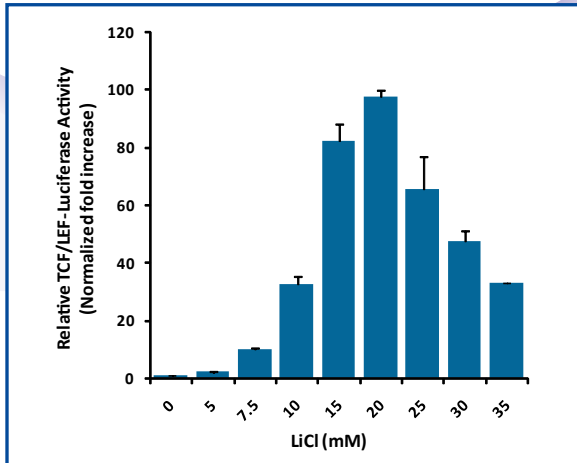


TLR Reporter Cell Line list:

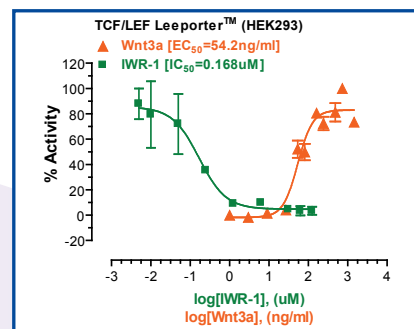
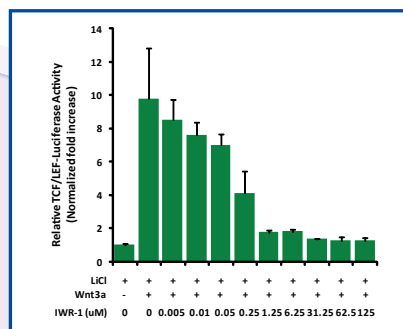
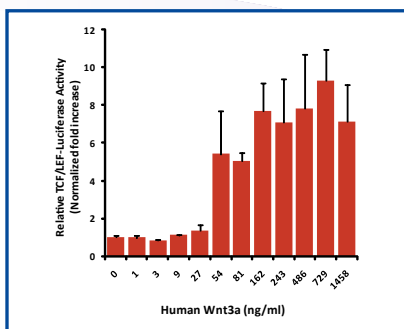
Product Name	Cat.No.	Host	Luciferase
TLR2/NF-kB Lleeporter™ Luciferase Reporter Cell Line	14-127ACL	HEK 293	Renilla
TLR3/NF-kB Lleeporter™ Luciferase Reporter Cell Line	14-128ACL	HEK 293	Renilla
TLR3/IFNB Lleeporter™ Luciferase Reporter Cell Line	14-122ACL	HEK 293	Renilla
TLR3/ISRE Lleeporter™ Luciferase Reporter Cell Line	14-123ACL	HEK 293	Renilla
TLR4/IL-8 Lleeporter™ Luciferase Reporter Cell Line	14-124ACL	HeLa	Renilla
TLR5/NF-kB Lleeporter™ Luciferase Reporter Cell Line	14-139ACL	HEK 293	Renilla
TLR7/NF-kB Lleeporter™ Luciferase Reporter Cell Line	14-129ACL	HEK 293	Renilla
TLR8/NF-kB Lleeporter™ Luciferase Reporter Cell Line	14-130ACL	HEK 293	Renilla
TLR9/NF-kB Lleeporter™ Luciferase Reporter Cell Line	14-131ACL	HEK 293	Renilla

TCF/LEF (Wnt) Looporter™ Luciferase Reporter Cell Line as a tool for Wnt signaling pathway research:

● Analysis of the LiCl-mediated TCF/LEF induction activity.



● Analysis of the Wnt3a-mediated TCF/LEF induction and inhibitory activity of IWR-1 (Inhibitor of Wnt Response 1).

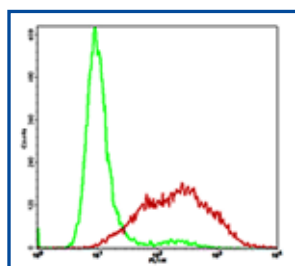


Product Name	Cat.No.	Host	Luciferase
TCF/LEF Looporter™ Luciferase Reporter Cell Line	14-119ACL	HEK 293	Renilla

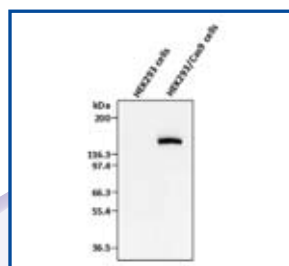
Complete List of Reporter Cell Lines

Product Name	Cat.No.	Host	Luciferase
AP-1 LEEPReporter™ Luciferase Reporter Cell Line	14-102ACL	HEK 293	Renilla
ATF6 LEEPReporter™ Luciferase Reporter Cell Line	14-138ACL	HeLa	Renilla
CRE LEEPReporter™ Luciferase Reporter Cell Line	14-134ACL	HEK 293	Renilla
FOXP3 LEEPReporter™ Luciferase Reporter Cell Line	14-144ACL	Jurkat T	Renilla
GATA3 LEEPReporter™ Luciferase Reporter Cell Line	14-109ACL	HEK 293	Renilla
HRE LEEPReporter™ Luciferase Reporter Cell Line	14-118ACL	HeLa	Renilla
IL-6 LEEPReporter™ Luciferase Reporter Cell Line	14-116ACL	NIH 3T3	Renilla
IL-8 LEEPReporter™ Luciferase Reporter Cell Line	14-101ACL	RAW 264.7	Renilla
iNOS LEEPReporter™ Luciferase Reporter Cell Line	14-115ACL	RAW 264.7	Renilla
ISRE LEEPReporter™ Luciferase Reporter Cell Line	14-141ACL	RAW 264.7	Renilla
ISRE LEEPReporter™ Luciferase Reporter Cell Line	14-143ACL	HEK 293	Renilla
MDA5/NF-kB LEEPReporter™ Luciferase Reporter Cell Line	14-121ACL	HEK 293T	Renilla
MIP-2 LEEPReporter™ Luciferase Reporter Cell Line	14-103ACL	HEK 293	Renilla
MIP-2 LEEPReporter™ Luciferase Reporter Cell Line	14-104ACL	RAW 264.7	Renilla
MRE LEEPReporter™ Luciferase Reporter Cell Line	14-137ACL	HEK 293	Renilla
NFAT LEEPReporter™ Luciferase Reporter Cell Line	14-110ACL	HEK 293	Renilla
NFAT LEEPReporter™ Luciferase Reporter Cell Line	14-111ACL	RAW 264.7	Renilla
NF-kB LEEPReporter™ Luciferase Reporter Cell Line	14-100ACL	RAW 264.7	Renilla
NF-kB LEEPReporter™ Luciferase Reporter Cell Line	14-125ACL	HEK 293	Renilla
NF-kB LEEPReporter™ Luciferase Reporter Cell Line	14-142ACL	Jurkat T	Renilla
Nrf2 LEEPReporter™ Luciferase Reporter Cell Line	14-117ACL	MCF7	Renilla
p53 LEEPReporter™ Luciferase Reporter Cell Line	14-126ACL	HeLa	Renilla
RIG-I/NF-kB LEEPReporter™ Luciferase Reporter Cell Line	14-120ACL	HEK 293T	Renilla
SBE LEEPReporter™ Luciferase Reporter Cell Line	14-136ACL	HEK 293	Renilla
SRE LEEPReporter™ Luciferase Reporter Cell Line	14-132ACL	HEK 293	Renilla
SRF-RE LEEPReporter™ Luciferase Reporter Cell Line	14-133ACL	HEK 293	Renilla
STAT1 LEEPReporter™ Luciferase Reporter Cell Line	14-112ACL	HeLa	Renilla
STAT1 LEEPReporter™ Luciferase Reporter Cell Line	14-113ACL	RAW 264.7	Renilla
STAT3 LEEPReporter™ Luciferase Reporter Cell Line	14-114ACL	HEK 293	Renilla
STAT3 LEEPReporter™ Luciferase Reporter Cell Line	14-147ACL	Ba/F3	Renilla
STAT4 LEEPReporter™ Luciferase Reporter Cell Line	14-140ACL	HEK 293	Renilla
STAT4 LEEPReporter™ Luciferase Reporter Cell Line	14-145ACL	Ba/F3	Renilla
STAT5 LEEPReporter™ Luciferase Reporter Cell Line	14-135ACL	Ba/F3	Renilla
STAT6 LEEPReporter™ Luciferase Reporter Cell Line	14-146ACL	Ba/F3	Renilla
TCF/LEF LEEPReporter™ Luciferase Reporter Cell Line	14-119ACL	HEK 293	Renilla
TLR2/NF-kB LEEPReporter™ Luciferase Reporter Cell Line	14-127ACL	HEK 293	Renilla
TLR3/IFNβ LEEPReporter™ Luciferase Reporter Cell Line	14-122ACL	HEK 293	Renilla
TLR3/ISRE LEEPReporter™ Luciferase Reporter Cell Line	14-123ACL	HEK 293	Renilla
TLR3/NF-kB LEEPReporter™ Luciferase Reporter Cell Line	14-128ACL	HEK 293	Renilla
TLR4/IL-8 LEEPReporter™ Luciferase Reporter Cell Line	14-124ACL	HeLa	Renilla
TLR5/NF-kB LEEPReporter™ Luciferase Reporter Cell Line	14-139ACL	HEK 293	Renilla
TLR7/NF-kB LEEPReporter™ Luciferase Reporter Cell Line	14-129ACL	HEK 293	Renilla
TLR8/NF-kB LEEPReporter™ Luciferase Reporter Cell Line	14-130ACL	HEK 293	Renilla
TLR9/NF-kB LEEPReporter™ Luciferase Reporter Cell Line	14-131ACL	HEK 293	Renilla
TNF-alpha LEEPReporter™ Luciferase Reporter Cell Line	14-105ACL	HEK 293	Renilla
TNF-alpha LEEPReporter™ Luciferase Reporter Cell Line	14-106ACL	RAW 264.7	Renilla
TNF-beta LEEPReporter™ Luciferase Reporter Cell Line	14-107ACL	HEK 293	Renilla
TNF-beta LEEPReporter™ Luciferase Reporter Cell Line	14-108ACL	RAW 264.7	Renilla

Abeomics offers monoclonal stable cell lines expressing various target molecules including immune-check point proteins.



Detection of human PD-1 in the CHO-K1/PD-1 stable cell line by surface Flow Cytometry. CHO-K1 cells (Green); CHO-K1/PD-1 (Red).



Detection of Cas9 in the HEK293/Cas9 stable cell line by Western blotting using anti-Cas9 antibody.

Stable Cell Line list:

Cat. No.	Product Name	Host	Description
14-500ACL	PD-1 Stable Cell Line	CHO-K1	Human Programmed Cell Death Protein -1 (PD-1, also known as CD279).
14-501ACL	PD-L1 Stable Cell Line	CHO-K1	Human Programmed Death- Ligand 1 (PD-L1, also known as CD275 and B7-H1).
14-502ACL	PD-L2 Stable Cell Line	CHO-K1	Human Programmed Death- Ligand 2 (PD-L2, also known as B7-DC and CD273).
14-503ACL	ICOS Stable Cell Line	CHO-K1	Human Inducible T-Cell Costimulator (ICOS, also known as CD278).
14-504ACL	ICOSL Stable Cell Line	CHO-K1	Human ICOS Ligand (ICOSL, also known as B7-H2, B7RP-1, and CD275).
14-505ACL	CD80 Stable Cell Line	CHO-K1	Human Cluster of Differentiation 80 (CD80, also known as B7-1).
14-506ACL	CTLA4 Stable Cell Line	CHO-K1	Human Cytotoxic T-Lymphocyte-Associated Protein 4 (CTLA4, also known as CD152).
14-507ACL	hB7-H4 Stable Cell Line	CHO-K1	Human B7-H4, also known as VTCN1.
14-508ACL	mB7-H4 Stable Cell Line	CHO-K1	Mouse B7-H4, also known as VTCN1.
14-509ACL	Langerin Stable Cell Line	CHO-K1	Human Langerin, also known as CD207.
14-510ACL	Cas9 Stable Cell Line	HEK293	CRISPR associated protein 9 (Cas9, also known as Csn1).
14-511ACL	NKp30 Stable Cell Line	CHO-K1	Human activating Natural Killer cell receptor 30 (NKp30, also known as Natural Cytotoxicity) triggering Receptor 3 (NCR3) or CD337).
14-512ACL	NKp46 Stable Cell Line	CHO-K1	Human activating Natural Killer cell receptor 46 (NKp46, also known as Natural Cytotoxicity) triggering Receptor 1 (NCR1) or CD335).
14-513ACL	mCD73 Stable Cell Line-H	HEK293	Mouse Cluster of Differentiation 73 (CD73 also known as ecto-5'-nucleotidase).
14-514ACL	GPC3 Stable Cell Line-H	HEK293	Human Glypican 3 (GPC3, also known as GTR2-2, OCI-5 and MXR7).
14-515ACL	VEGFR2 Stable Cell Line-H	HEK293	Human vascular endothelial growth factor receptor 2 (VEGFR2, also known as CD309, KDR and FLT-1).
14-516ACL	VISTA Stable Cell Line	CHO-K1	Human V-type immunoglobulin domain-containing suppressor of T-cell activation (VISTA, also known as VSIR, B7-H5, PD-1H, and SISP1).
14-517ACL	mCD73 Stable Cell Line	CHO-K1	Mouse Cluster of Differentiation 73 (CD73 also known as ecto-5'-nucleotidase).
14-518ACL	GPC3 Stable Cell Line	CHO-K1	Human Glypican 3 (GPC3, also known as GTR2-2, OCI-5 and MXR7).
14-519ACL	VISTA Stable Cell Line-H	HEK293	Human V-type immunoglobulin domain-containing suppressor of T-cell activation (VISTA, also known as VSIR, B7-H5, PD-1H, and SISP1).
14-520ACL	TIM-3 Stable Cell Line	CHO-K1	Human T-cell immunoglobulin and mucin-domain containing-3 (TIM-3, also known as HAVCR2 and CD366).
14-521ACL	B7-H3 Stable Cell Line	CHO-K1	Human B7-H3 (also known as CD276).
14-522ACL	A2AR Stable Cell Line	CHO-K1	Human adenosine A2A receptor (A2AR, also known as ADORA2A).

One-Step Luciferase Assay Kit

Product Name	Cat. No.	Quantity	96-well Plate Format
Leeporter™ Luciferase Assay Reagent	17-1101	1 Kit	1000 Tests

The Leeporter™ Luciferase Assay Reagent was specifically formulated to use with our Leeporter™ (Luciferase Reporter) Cell Line products, which was designed to produce highly sensitive signal and prolonged signal intensity. As one-step glow assay reagent, the Leeporter™ Luciferase Assay Reagent can be directly added to cell culture plates compatible with the luminometer being used without diluting or transferring culture supernatants or cell lysates to other plates.

