

Monoclonal oligomer-specific antibodies targeting Amyloid-beta and Alpha-synuclein

Using a novel technique, based on a combination of cryptic epitope and avidity, oligomer-specificity can be designed in detail. Agrisera offers a range of oligomer-specific antibodies targeting the amyloid-beta peptide and human alpha-synuclein. All antibodies are in detail described in Brännström et al. 2014, *PLoS one: A Generic Method for Design of Oligomer-Specific Antibodies*.

Oligomer-specific amyloid-beta antibodies (mouse)

- Monoclonal antibody developed in mouse
- IgG isotype
- Bind to amyloid-beta oligomers but not to fibrils (Fig. 1)

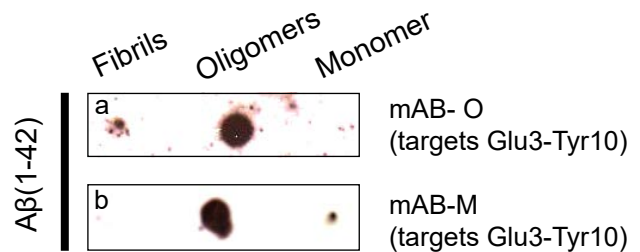


Fig. 1 Dot-blot where identical amounts of Abeta1-42; fibrils, oligomers and monomers, have been applied followed by probing of (a) mAB-O, (b) mAB-M.

Oligomer-specific alpha-synuclein antibodies (mouse)

- Monoclonal antibody developed in mouse
- IgG isotype
- Binds to oligomers but not to fibrils of human alpha-synuclein (Fig. 2)

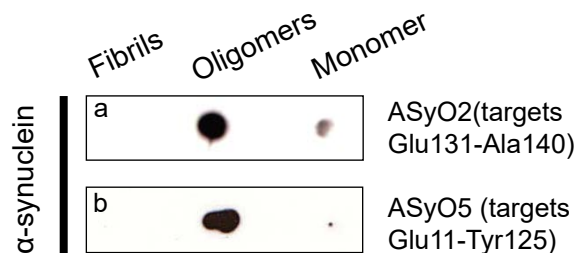


Fig. 2. Dot-blot where identical amounts of α -synuclein; fibrils, oligomers and monomers, have been applied followed by probing of (a) ASyO2, (b) ASyO5.

Alzheimer's disease, Product name.....	Product number
IAPP Human IAPP (amylin) 1-37, specific to disulphide-bridge between Cys2-Cys7.....	AS08 359
mAB-M Mouse anti-human Abeta protein (3-10) region, oligomer-specific (clone 2D10.F6).....	AS13 2716
mAB-O Mouse anti-human Abeta protein (3-10) region, oligomer-specific (clone 3E5.F8).....	AS13 2715
Parkinson's disease, Product name.....	Product number
ASyO2 Mouse anti-human alpha-synuclein oligomer-specific (clone number 51.24).....	AS13 2717
ASyO2-biotinylated Mouse anti-human alpha-synuclein oligomer-specific.....	AS13 2717B
ASyO5 Mouse anti-human alpha-synuclein oligomer-specific (clone number 2.4).....	AS13 2718
ASyO5-biotinylated Mouse anti-human alpha-synuclein oligomer-specific.....	AS13 2718B
ASyM Mouse anti-human alpha synuclein N-terminal (clone number 4.2).....	AS13 2719
ASyM-biotinylated Mouse anti-human alpha synuclein N-terminal.....	AS13 2719B