

Antibodies to tags

15% discount on all tag antibodies

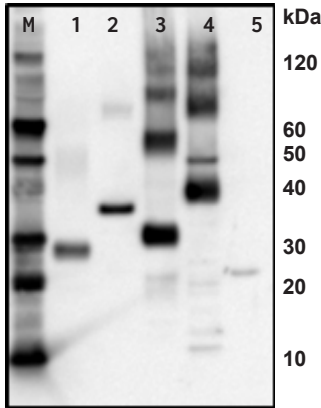
Use discount code Tag15
Valid July-Dec 2023

Most popular antibodies to tags

Product name	Product number	Applications
aadA1 Aminoglycoside adenylyltransferase (chloroplast transformation marker)	AS09 580	WB
BC2-tag	AS20 4446	WB
BFP, GFP, YFP Fluorescent Protein, clone 3A6	AS20 4485	ELISA, WB
BirA (mutated/TurboID)	AS20 4440	WB
C-Myc (polyclonal)	AS09 601	ICC
C-YFP C-terminal of YFP	AS11 1775	WB
Cas9 CRISPR-associated endonuclease 9 (polyclonal)	AS16 3690	IL, WB
CBP epitope tag	AS21 4686	ELISA, WB
DYKDDDDK (binds to Sigma FLAG®, clone FG4R)	AS15 2871	Dot, ELISA, IP, IHC, WB
DYKDDDDK (binds to Sigma FLAG®) (mouse antibody, monoclonal, Clone 1E6)	AS15 3036	IP, IHC, WB
DYKDDDDK (binds to Sigma FLAG®) (rabbit antibody, polyclonal)	AS15 3037	IHC, IP, WB
DYKDDDDK (binds to Sigma FLAG®) (polyclonal)	AS20 4442	WB
GFP Green Fluorescence Protein	AS20 4443	ChIP, IP, WB
GFP Green Fluorescence Protein (affinity purified)	AS15 2987	ELISA, IF, IP, WB
GFP Green fluorescent protein (VENUS)	AS18 4227	WB
GST-tag (mouse, monoclonal)	AS21 4677	WB
GST-tag (rabbit antibody, polyclonal)	AS17 4147	ELISA, WB
GUS Beta-glucuronidase	AS16 3689	IL, WB
HA (monoclonal, Clone 12CA5)	AS20 4453	WB
HA (rabbit polyclonal)	AS12 2220	IP, WB
HA, conjugated to HRP	AS15 2924	WB
His-tag 3xHis (polyclonal)	AS20 4441	WB
His-tag 6xHis (clone HIS,H8 / EH158)	AS11 1771	Dot, ELISA, IL, IP, WB
His-tag 6xHis, HRP conjugated (Clone AD1,1,10)	AS15 2930	WB
LUC Luciferase (firefly) (serum)	AS16 3691	WB
MBP Maltose Binding Protein (monoclonal)	AS21 4678	ELISA, WB
mCherry (monoclonal)	AS16 3967	ICC, WB
mNeonGreen Fluorescent Protein	AS21 4525	WB
mStrawberry	AS21 4675	WB
Myc tag (monoclonal, Clone Myc,A7)	AS15 3035	IL, IP, WB
Myc tag (rabbit antibody, polyclonal)	AS15 3034	ELISA, WB
Myc epitope tag	AS21 4685	ELISA, WB
N-YFP N-terminal of YFP	AS11 1776	WB
RFP Red Fluorescent Protein (clone RF5R)	AS15 3028	Dot, ELISA, IP, IHC, WB
S epitope tag	AS21 4684	ELISA, WB
Strep-tag®II-Tag antibodies (polyclonal)	AS21 4527	WB
T7 epitope tag	AS21 4679	ELISA, WB
TAP epitope tag	AS21 4687	ELISA, WB
V5 (clone V5,E10)	AS15 3027	Dot, ELISA, IP, IHC, WB

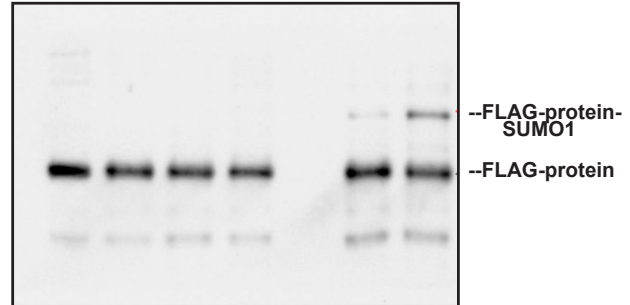
Application examples

Anti-6xHis
Product #: AS11 1771



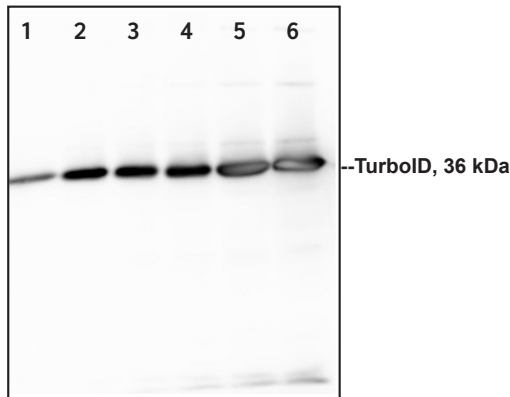
500 femtomoles of His-tagged proteins IsiA, NifH, PsbA, PsbB and PetC. Apparent molecular weight of recombinant proteins: IsiA - 27 kDa (1), NifH - 34 kDa (2), PsbA - 30-37 kDa (3), PsbB - 40 kDa (4), PetC - 23 kDa (5).

Anti-DYKDDDDK (binds to Sigma FLAG®)
Product #: AS20 4442



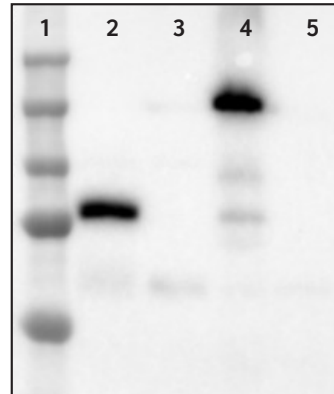
1.5 µg/well of recombinant FLAG-tagged protein expressed in bacteria was separated on a gel and transferred to a membrane. Detection was done using anti-FLAG antibody at a dilution of 1: 5000, 1 h/RT. Courtesy of Dr. Agata Cieśla, Ludwików's lab, Laboratory of Biotechnology UAM, Poland

Anti-TurboID
Product #: AS20 4440



1 ng, 5 ng, 10 ng, 25 ng, 50 ng, and 75 ng of purified TurboID, loaded into wells 1, 2, 3, 4, 5, and 6, respectively. Courtesy of Eli Gordon and Dr. Patrick Treffon, University of Massachusetts Amherst, USA.

Anti-mNeonGreen
Product #: AS21 4525



Precision Plus Protein Standards (Bio-Rad) (1), *A. thaliana* expressing mNeonGreen-tagged fusion protein (2), *A. thaliana* wild type total cell extract (3), *C. reinhardtii* expressing mNeonGreen-tagged fusion protein (4), *C. reinhardtii* wild type cell extract (5). Molecular weight depends on used fusion partner. Courtesy of Hanie Khorshidi, University of Saskatchewan, Canada.

Visit www.agrisera.com for a complete listing of our tag antibodies and technical data.