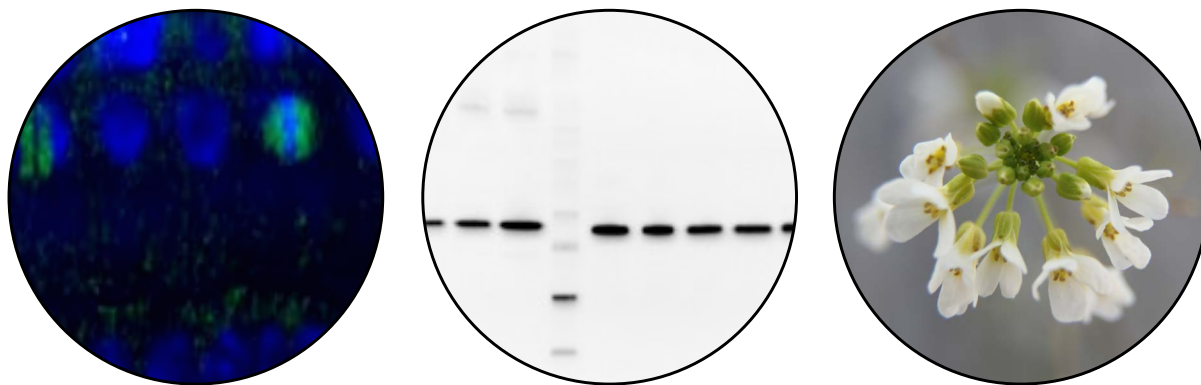


Arabidopsis thaliana antibodies

Agrisera offers a large collection of validated, high-quality antibodies for *Arabidopsis thaliana* research. These antibodies are frequently cited in scientific articles, and suitable for many applications, including immunolocalization, immunoprecipitation and Western blot.



A selection of antibodies for *Arabidopsis thaliana*

Product name	Product number	Applications
ACT Actin	AS13 2640	IF, WB
AtpB Beta subunit of ATP synthase, chloroplastic + mitoch (rabbit antibody)	AS05 085	BN-PAGE, IF, WB
AtpB Beta subunit of ATP synthase, mitochondrial	AS16 3976	BN-PAGE, IF, WB
FtsZ Procaryotic cell division GTPase, cyanobacterial	AS07 217	IF, IL, WB
H3 Histone H3 (polyclonal, serum)	AS10 710	ChIp-qPCR, ICC, WB
Psb0 33 kDa of the oxygen evolving complex (OEC) of PSII	AS06 142-33	WB
PsbP 23 kDa protein of the oxygen evolving complex (OEC) of PSII	AS06 142-23	WB
PsbP 23 kDa protein of the oxygen evolving complex (OEC) of PSII	AS08 305	WB
RA Rubisco activase	AS10 700	WB
RbcL Rubisco large subunit, form I	AS03 037	IF, IG, TP, WB
RbcL Rubisco large subunit, form I (chicken)	AS01 017	IL, WB
RPN6 26S proteasome non-ATPase regulatory subunit 9	AS15 2832A	WB
Tubulin alpha chain	AS10 680	IF, WB
Tubulin beta chain	AS10 681	IF, WB
H+ATPase Plasma membrane H+ATPase (rabbit antibody)	AS07 260	IF, IL, WB
PsbA D1 protein of PSII, C-terminal (thylakoid membrane marker)	AS05 084	IG, WB
AGO1 Argonaute 1	AS09 527	ChIP, IL, WB
PsaA PSI-A core protein of photosystem I	AS06 172	IG, WB

Find your antibody!
Agrisera antibodies matched
with TAIR gene ID
www.agrisera.com/TAIR



Compartment markers

Combine marker antibodies in a set of 3, 5 or 10 products

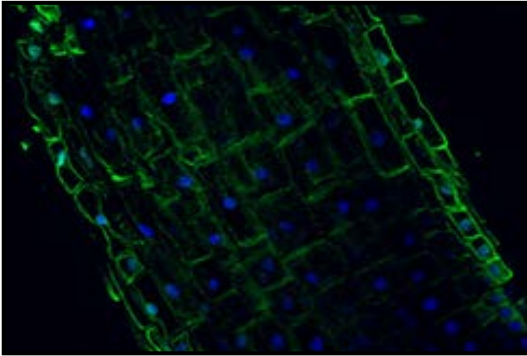
Product #: SA000001, SA000002 and SA000003

The Plant Cell Compartment Antibody Marker Sets are collections of antibodies, allowing the estimation of fraction purity for a range of plant species, including *Arabidopsis thaliana*. Selected antibodies are accompanied by a protein standard which can be used as a positive control or for quantitation purpose.

Application examples

Anti-H+ATPase

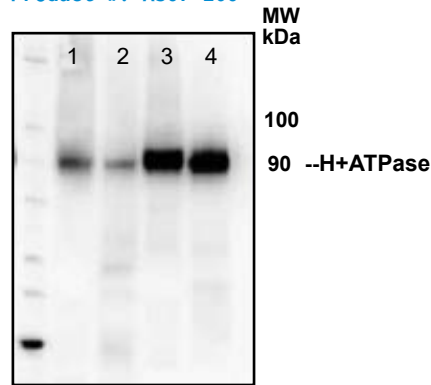
Product #: AS07 260



H+ATPase plasma membrane localization in *A. thaliana* roots. Courtesy Dr. Taras Pasternak, Freiburg University.

Anti-H+ATPase

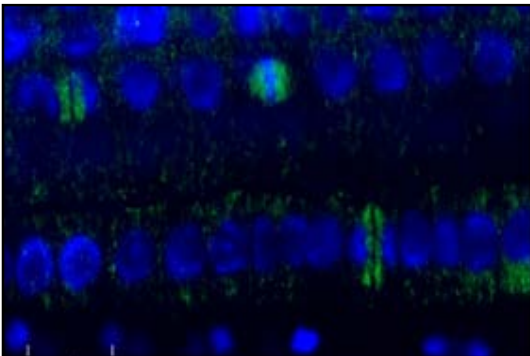
Product #: AS07 260



WB using Agrisera H+ATPase antibody on 20 µg of total protein from *A. thaliana* (1), *H. vulgare* (2), *Z. mays* (3), *N. tabacum* plasma membrane fraction, 2.5 µg (4).

Anti-Tubulin beta

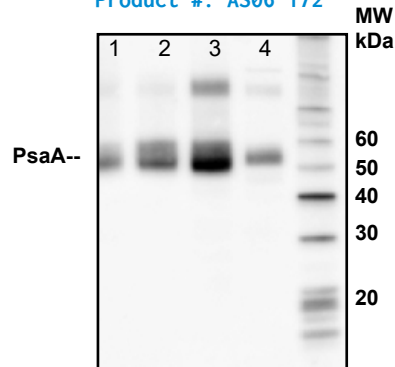
Product #: AS10 681



Tubulin beta localization in *A. thaliana* epidermis cells using Agrisera primary anti-Tubulin (AS10 681) antibody, visualized in green.

Anti-PsaA

Product #: AS06 172



WB using Agrisera PsaA antibody on 2 µg of total protein from (1) *A. thaliana* leaf, (2) *H. vulgare* leaf, (3) *C. reinhardtii* total cell, (4) *Synechococcus* sp. 7942 total cell.

Speed up your research with the most comprehensive
Arabidopsis antibody collection on the market!