

Plant Cell Compartment marker antibodies

- ✓ Available off-the-shelf today
- ✓ Antibodies for thousands of species
- ✓ Supported by a strong publication record

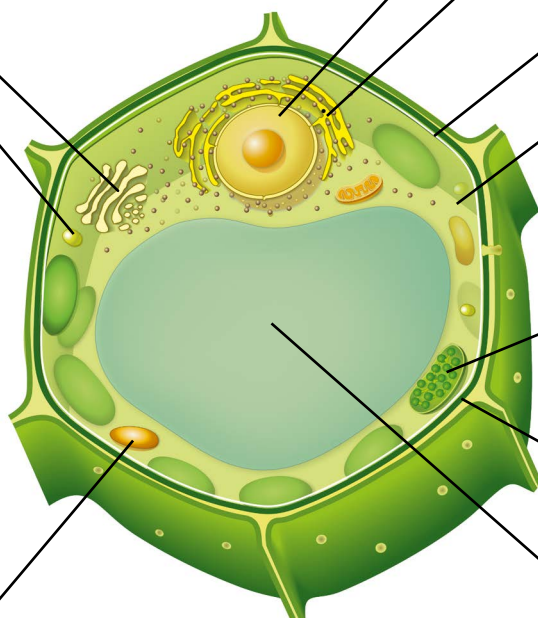
Succeed with your experiment

Peroxisome

Cat.....	AS09 501
DEG15.....	AS10 711
GOX.....	AS14 2772
HPR (matrix)	AS08 319
Pex14p.....	AS08 372

Golgi

ARF1 (21 kDa).....	AS08 325
Sec21p (98 kDa).....	AS08 327



Mitochondria

AOX1/2 (inner membrane).....	AS04 054
COXII (inner membrane).....	AS04 053A
GDC-H (matrix).....	AS05 074
IDH (matrix).....	AS06 203A
SHMT (matrix).....	AS05 075
VDAC1 (outer membrane).....	AS07 212

Plastids (roots)

FNR (roots).....	AS20 4436
------------------	-----------

Nuclei

H3 (histone).....	AS10 710
SUN1,2 (nuclear envelope)....	AS15 2856

ER

BiP (80 kDa).....	AS09 481
KDEL.....	AS13 2665
NAI2.....	AS20 4421
PYK10.....	AS20 4409

Plasma membrane

H+ATPase.....	AS07 260
---------------	----------

Cytoplasm

Actin (45 kDa).....	AS13 2640
cAPX (20 kDa).....	AS06 180
cFBPase (37 kDa).....	AS04 043
RbcL (52-53 kDa).....	AS03 037
RBP40 (40 kDa).....	AS14 2820
SPS (120-130 kDa).....	AS06 185
UGPase (51 kDa).....	AS05 086

Chloroplast

CRD1 (thylakoid membrane)	AS06 122
PC (lumen).....	AS06 141
PEC1 (inner membrane).....	AS21 4528
PGL35 (plastoglobules).....	AS06 116
PRK (stroma)	AS07 257
PsbA (thylakoid membrane)....	AS05 084
RbcL (stroma).....	AS03 037
Tic40 (inner membrane).....	AS10 709

Cell wall

CesA4 (IRX5).....	AS12 2582
CesA7 (IRX3).....	AS12 2581
CesA7 (IRX1).....	AS12 2580
XTH-Xet	AS08 319

Vacuole

PR-2 (vacuolar contents).....	AS07 208
PR-3 (vacuolar contents).....	AS07 207
V-ATPase (tonoplast).....	AS07 213
VPS35.....	AS20 4402

Microsomal membrane

CNX1/2.....	AS12 2365
-------------	-----------

Antibody marker set

Product #: SA000001, SA000002 and SA000003

Combine marker antibodies of your choice in a set of 3, 5 or 10 products.

The Plant Cell Compartment Antibody Marker Sets are collections that allow estimation of fraction purity for a range of plant species, including *Arabidopsis thaliana*. Selected antibodies are accompanied by a protein standard which can be used as a positive control or for quantitation purposes.