

## Antibody-Index

A	F	
ACE2	FABP1	PMEL17 / gp100
AIF1	Factor 13 alpha	Progesterone Receptor
Androgen Receptor		PSA
Arginase-1	G	PSAP / ACP3/ ACPP
C	GAD2	PTH
Cadherin-16/CDH16	GATA3	S
Cadherin-17/CDH17	GFAP	S100
Calbindin 1	Glutamine Synthetase	S100A12
Caldesmon	GLUT1	100P
Calponin	GP2	SATB2
CD1a	H	Somatostatin
CD3	HLA-DRB1	SOX9
CD4	Helicobacter Pylori	STAR
CD5	Hepatocyte Specific	STING
CD7	HER2	Synaptophysin
CD8	HLA-DRa	T
CD20	I	TACSTD2 / Trop2
CD22	IgA	TdT
CD23	Inhibin alpha	Thyroglobulin
CD27	INSM1	TIM3
CD31	K	TOP2A / TOPO2A
CD34	Ki-67	TRIM29
CD45	KLK7	U
CD45RA	M	Uroplakin 1A
CD141	Mammaglobin	Uroplakin 1B
CD163	MBP / Myelin Basic Protein	Uroplakin 3B
CEA	MCM3	V
CELA3B	MCM7	Villin
Chromogranin A	Melan A CR (cross reactive)	Vimentin
Collagen IV	Melan A specific	Vwf
CPA1/	Mesothelein	X
Carboxypeptidase A1	MPO/	XRCC5/Ku-p80
CTLA-4 /CD152	Myeloperoxidase	Z
Cystatin A	MSH2	ZAP-70
Cytokeratin 5	MSH6	
Cytokeratin 6	MUC1	
Cytokeratin 7	MUC5AC	
Cytokeratin 10	MUC6	
Cytokeratin 13	MyoD1	
Cytokeratin 14	Myosin Heavy Chain 11	
Cytokeratin 15	N	
Cytokeratin 18	Napsin A	
Cytokeratin 19	NSE gamma	
Cytokeratin 20	Nucleolin	
Cytokeratin Pan	P	
D	p16	
Decorin	p53	
Desmin	p63	
Desmoglein 1	PAPP-A	
Desmoglein 3	PD-L1	
DOG-1	Periostin	
E	PGP9.5	
E-Cadherin	PLAP	
Elastin		
EpCAM		
Estrogen Receptor		

### MS Validated Antibodies GmbH

Bergstedter Chaussee 62a

22395 Hamburg

Tel: +49 (0) 40 89 72 55 81

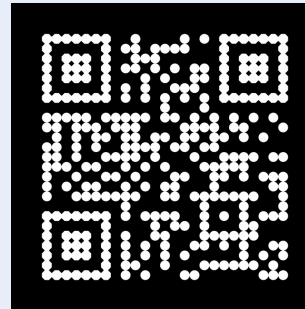
E-Mail: [info@ms-validatedantibodies.com](mailto:info@ms-validatedantibodies.com)

[www.ms-validatedantibodies.com](http://www.ms-validatedantibodies.com)



MS

# Validated Antibodies



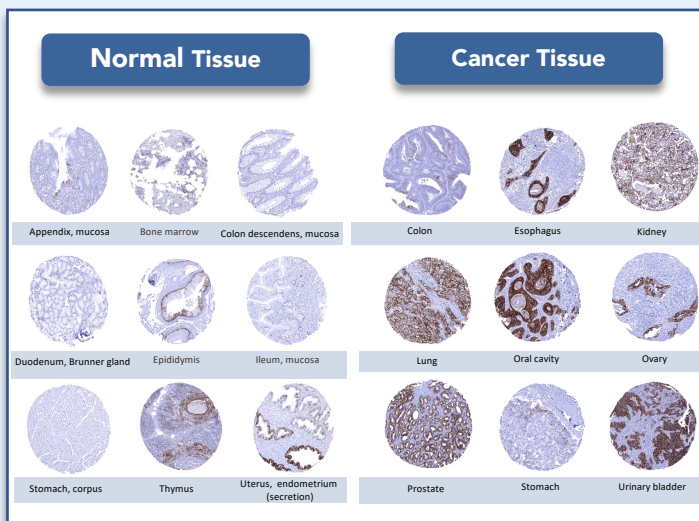
Large-Scale Validated Antibodies  
for Immunohistochemistry.

[www.ms-validatedantibodies.com](http://www.ms-validatedantibodies.com)

**MS Validated Antibodies** is dedicated to provide optimal monoclonal antibodies for immunohistochemistry and providing users with unique product documentation that allows them to better understand their antibodies. MSVA has highly stringent criteria for product selection: **Only 145 out of the first 4,500** evaluated antibodies were selected for our portfolio. **Key features of MSVA include:**

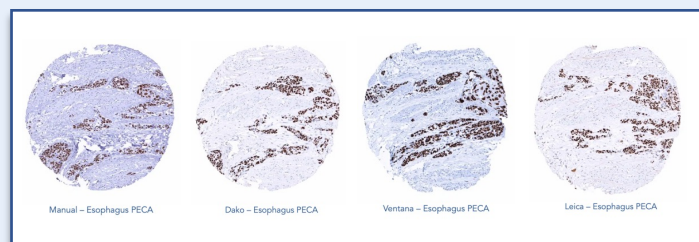
## Unique Antibody Documentation

with **60-100 images** of relevant normal tissues and selected tumors.



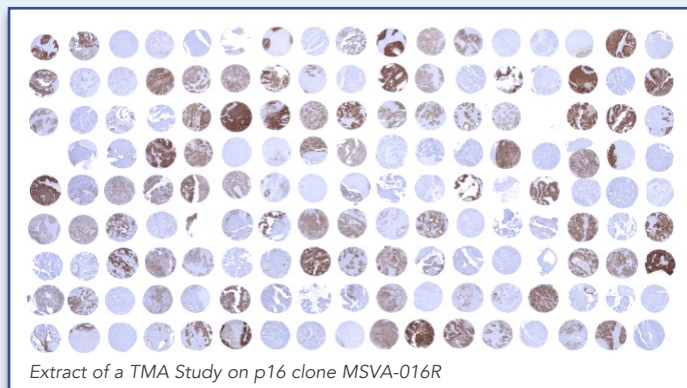
## Protocol Recommendations

For manual staining and Autostainers (Dako, Leica, Ventana).



## Large-Scale Studies

It is often not known to researchers and pathologists where certain antibodies should stain and literature data on certain proteins show inconsistent results. In order to get a true picture of the staining behavior of an antibody MSVA supports IHC Large-Scale studies on thousand different tumor samples.



TACSTD2 / Trop-2 antibody clone MSVA-733R  
**18,563 samples**

p16 antibody clone MSVA-016R – **15,783 samples**

Cytokeratin 7 antibody clone MSVA-607R & Cytokeratin 20 antibody clone MSVA-620R – **15,424 samples**

Villin antibody clone MSVA-459R – **14,398 samples**

Uroplakin 1B antibody clone MSVA-734M  
**14,061 samples**

CPA1 antibody clone MSVA-601M – **12,274 samples**

Uroplakin 1A MSVA-735M – **6,929 samples**

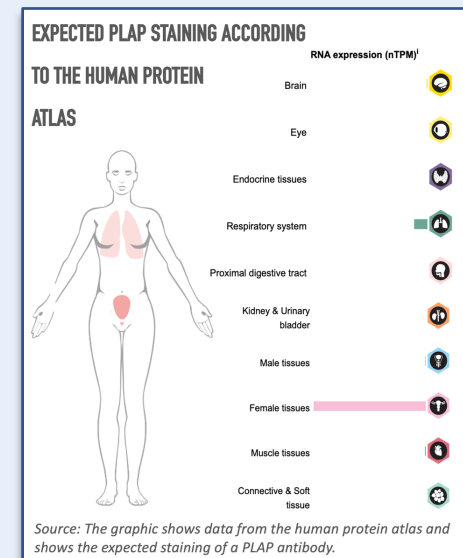
CTLA-4 antibody clone MSVA-152R – **4,582 samples**



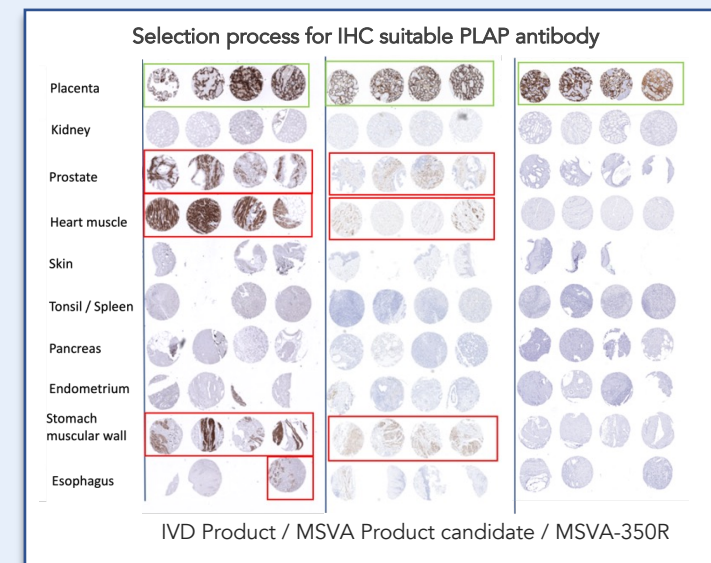
## Strict Antibody Selection Process

RNA data from the *Human Protein Atlas* show in which tissues staining is to be expected.

For example, a PLAP antibody is expected to stain almost exclusively in the female genital tract (placenta).



Our PLAP clone MSVA-350R only stains placenta on a TMA. This result was expected based on the HPA RNA data (orthogonal strategy).



The comparison with other antibodies confirms the placenta staining as specific. Additional staining of the two antibodies are both "antibody-specific" and represent cross-reactions.