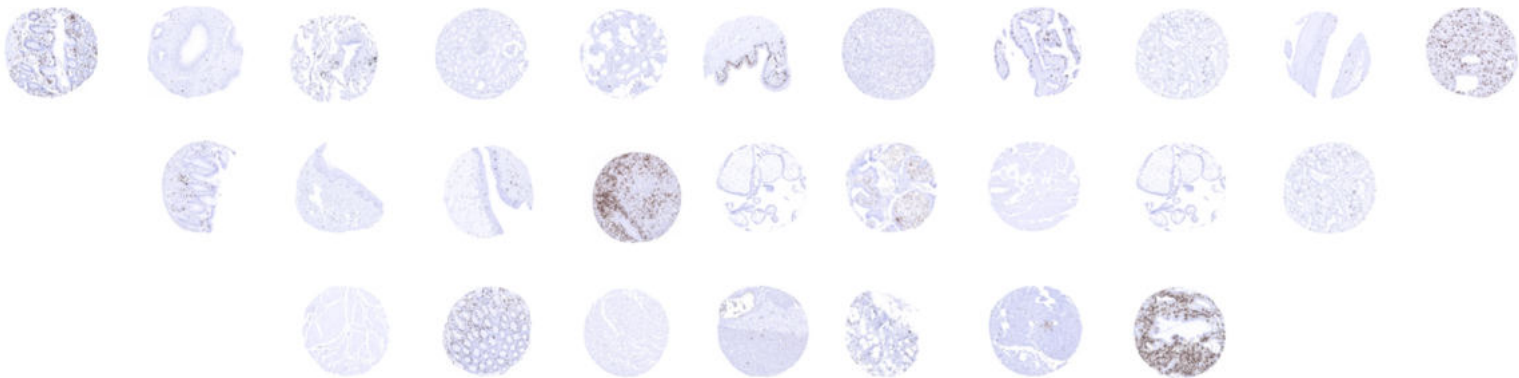




MS

# Validated Antibodies

Large-Scale Validated Antibodies for  
Immunohistochemistry.



[www.ms-validatedantibodies.com](http://www.ms-validatedantibodies.com)

---

Catalog 2023

## MS Validated Antibodies GmbH

Bergstedter Chaussee 62a

22395 Hamburg

Tel: +49 (0) 40 89 72 55 81

E-Mail: [info@ms-validatedantibodies.com](mailto:info@ms-validatedantibodies.com)

Website: [ms-validatedantibodies.com](https://ms-validatedantibodies.com)



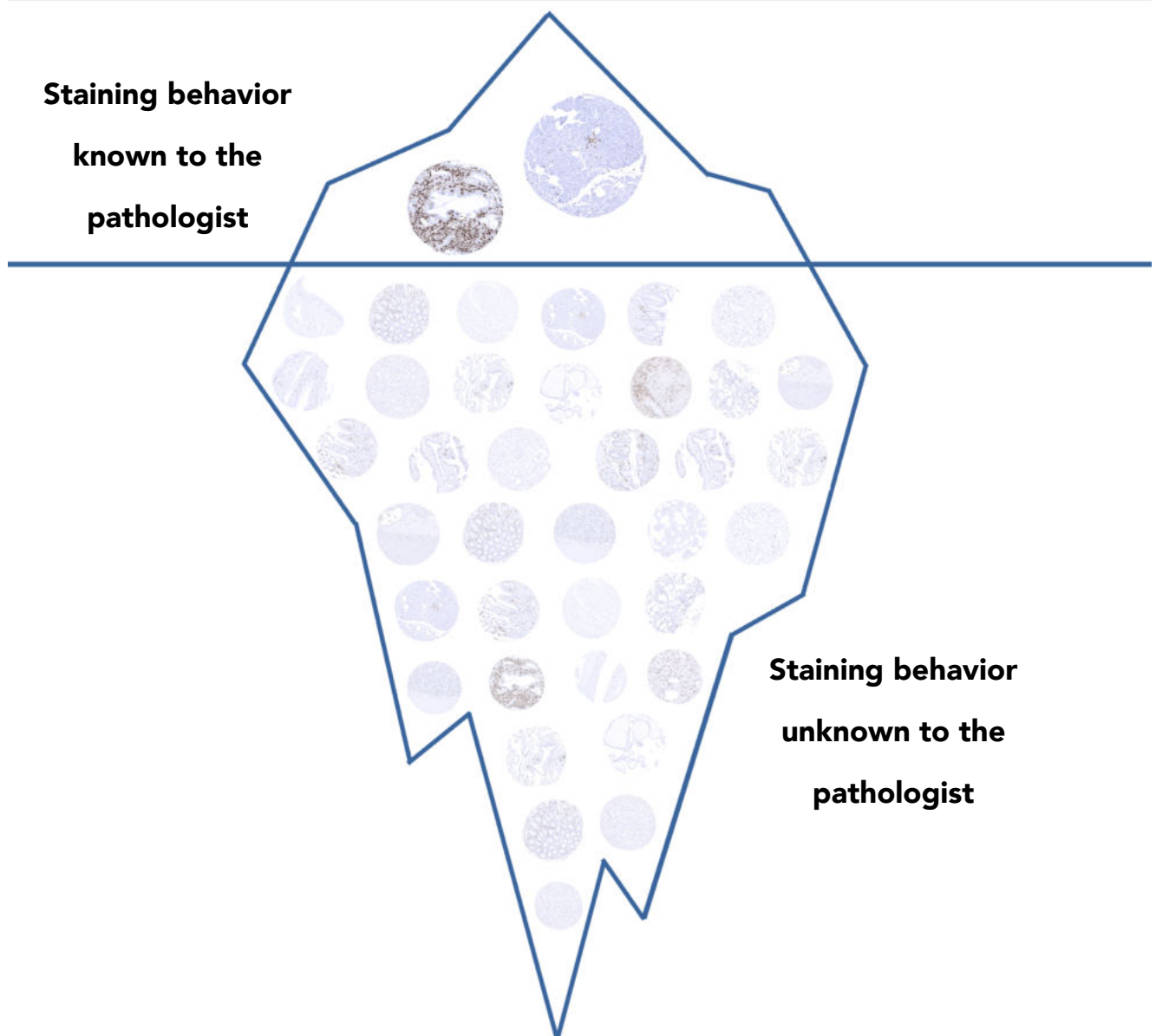
SCAN ME

For information on the specific selection and validation of MSVA antibodies,  
see page 2-10

Our product overview and the individual antibodies can be found on page  
11-27

„With the current data on the market pathologist or researchers know only a little part of the behavior of an antibody. The rest is unknown. “

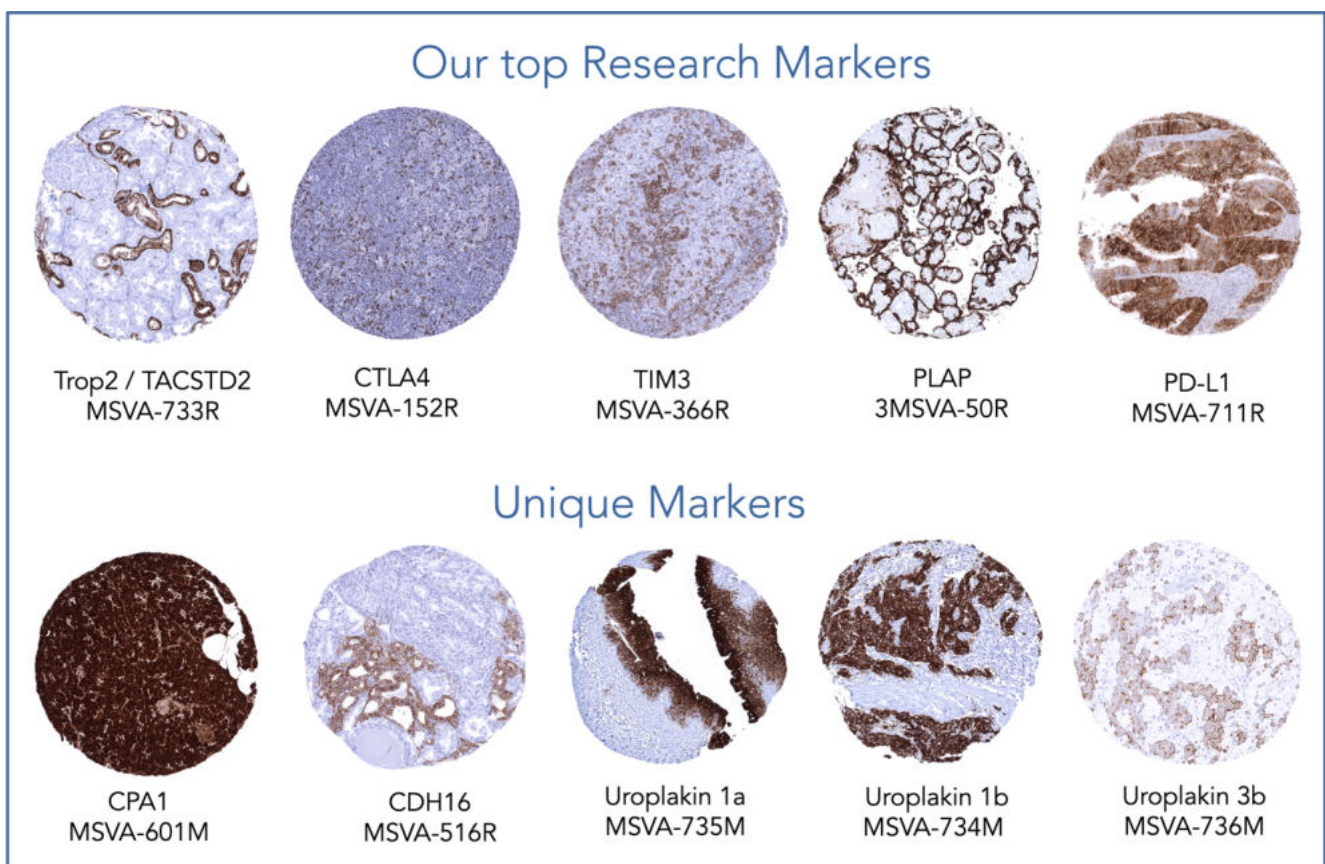
Usually, antibody vendors provide very little information and images on how an antibody stains. References are often limited to a positive and a negative control on their website. When pathologists and researchers use these antibodies, they don't know about the complete staining behavior of an antibody because often they do not have time or access to enough different tissues to conduct an in-house validation of the antibody. This can cause severe problems because researchers cannot know if they can trust the antibody and the data they have generated in their studies.



The goal of MS Validated Antibodies is to reveal 100% of the staining characteristics of an antibody so pathologists and researchers know exactly what stainings are to be expected.

# MS Validated Antibodies

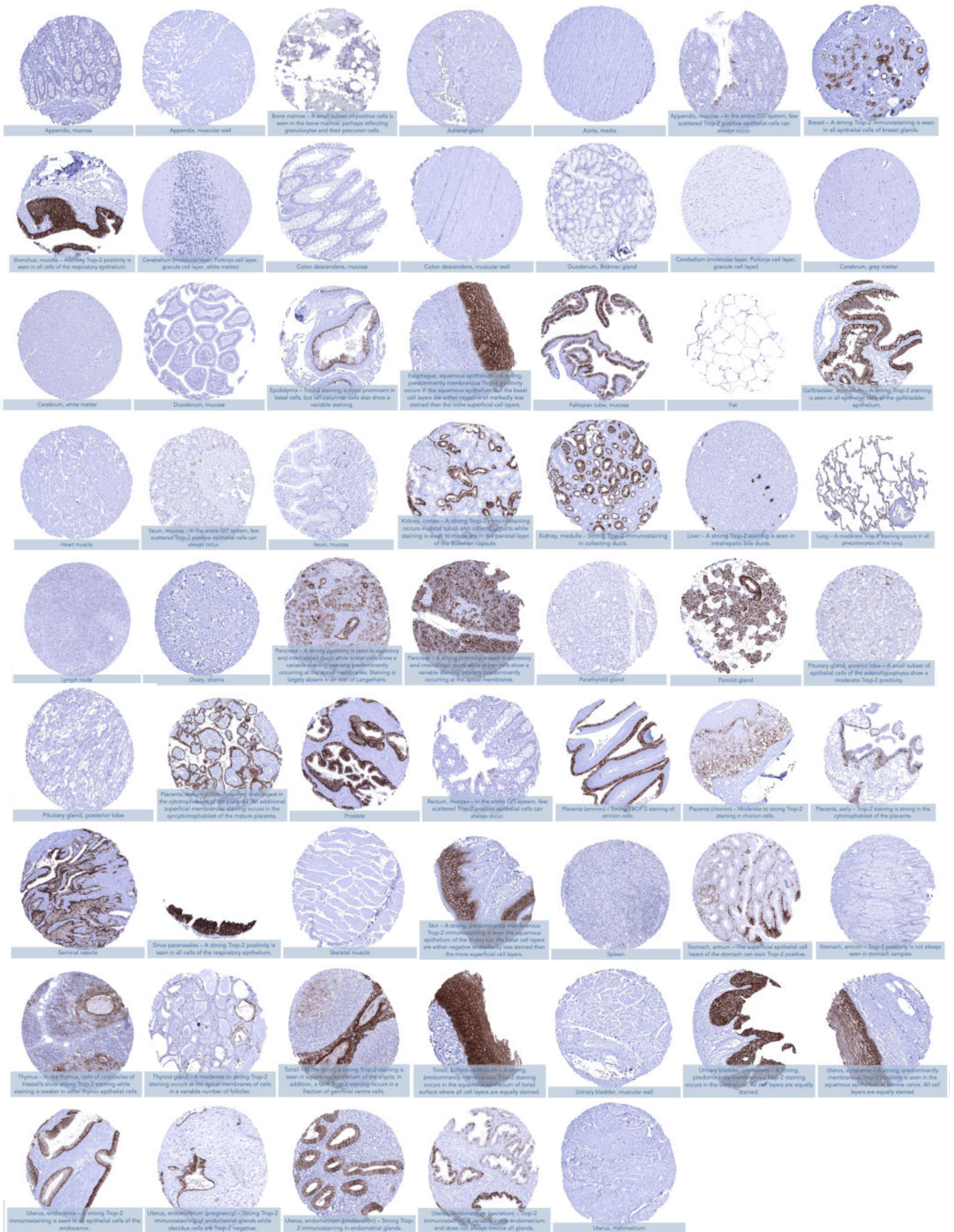
1. Large-scale tissue-validated antibodies specifically designed for immunohistochemistry on formalin-fixed tissue
2. Unique antibody documentation on the MSVA website with 60-100 images of relevant normal tissues and selected tumors
3. Documented performance characteristics of many antibodies in studies involving more than 10,000 tumors



**MS Validated Antibodies** is dedicated to providing optimal monoclonal antibodies for immunohistochemistry and providing users with unique product documentation that allows them to better understand their antibodies. Key features of the MSVA package include:

- Strict product selection criteria: **Only 135** of the first 4,500 antibodies evaluated were selected for the MSVA portfolio.
- **Protocol recommendations** for manual staining and Autostainers (Dako, Leica, Ventana).
- Published **data on the performance characteristics** of our antibodies are compiled on the MSVA website (if available).

# TACSTD2 / Trop-2 (MSVA-733R) gallery of normal tissue (>50 tissues) on our website



# Antibody Validation for Immunohistochemistry

Antibodies intended for use on formalin-fixed tissue must be specifically validated on formalin-fixed tissue. According to the **International Working Group for Antibody Validation (IWGAV)**, there are only two ways to document the specificity of antibodies for immunohistochemistry on this type of tissue. These are:

## 1. Orthogonal strategy

This means the comparison with a second independent method for measuring expression across a large number of different tissue types.

## 2. Independent antibody strategy

This means a comparison with one or more independent antibodies for the same target protein. Specific staining is achieved with both antibodies, while staining found with just one antibody must be considered non-specific or cross-reactive.

## Hands-on Approach

To ensure the best possible validation and to avoid the problem of non-specific antibodies, MS Validated Antibodies combines both approaches. The resulting abundance of information on the antibodies is available on our website.

### 1) Look up

First, we look up the RNA data from the Human Protein Atlas (humanproteinatlas.org). It shows in which tissues staining is to be expected.

For example, a PLAP antibody is expected to stain almost exclusively in the female genital tract (placenta).

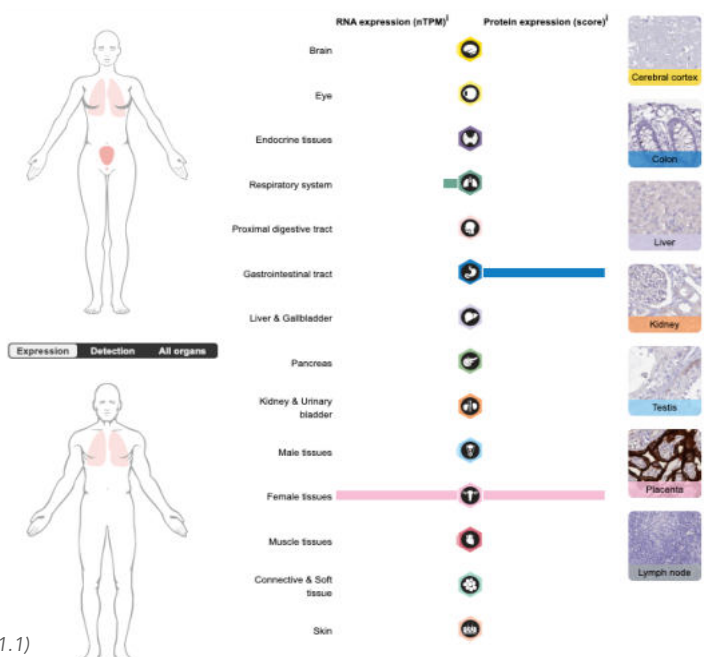
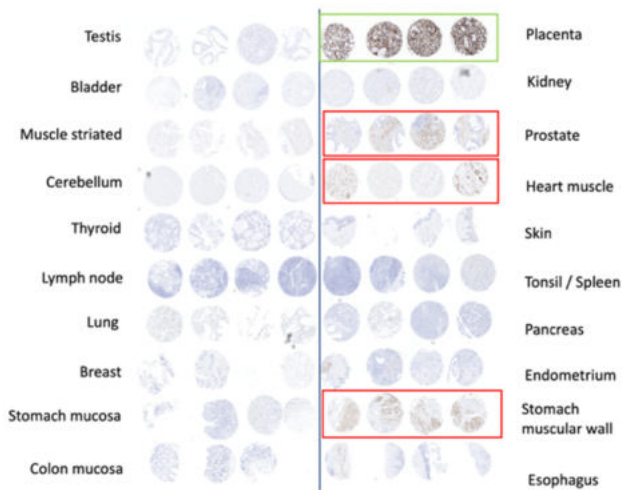


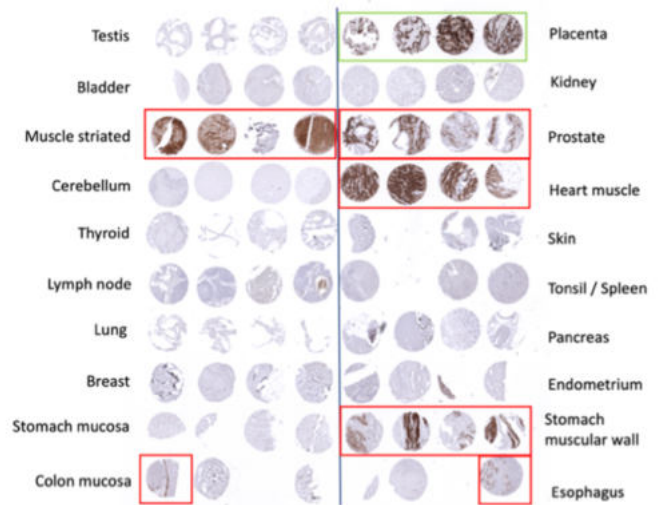
Image Credit: Human Protein Atlas / data available on <https://www.proteinatlas.org/ENSG00000163283-ALPP/tissue> (v#21.1)

## 2) Comparison of Antibodies



MSVA Product Candidate #1

Not Approved – cross-reactive



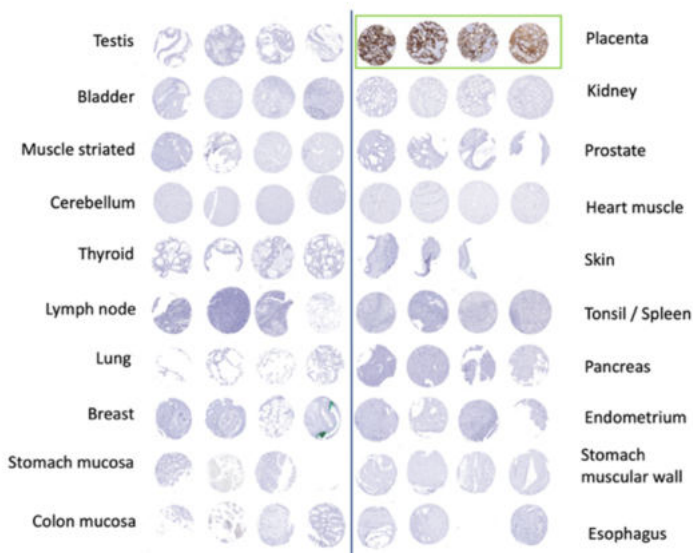
Established IVD Product on the market

Established antibody on the market shows also cross-reactivity

Final Clone MSVA-350R



Approved – no cross-reactivity



The comparison with other MSVA product candidates and (at least) one other independent and established clone on the market confirms the placenta staining as specific. In the images above, additional stainings outside of the placenta are both "antibody-specific" and represent cross-reactivities.

We test product candidates until we find a suitable candidate. If not, we will not approve the antibody.

**Our PLAP clone MSVA-350R only stains placenta on a TMA test.**

# MSVA website - a useful guide for our antibody users.

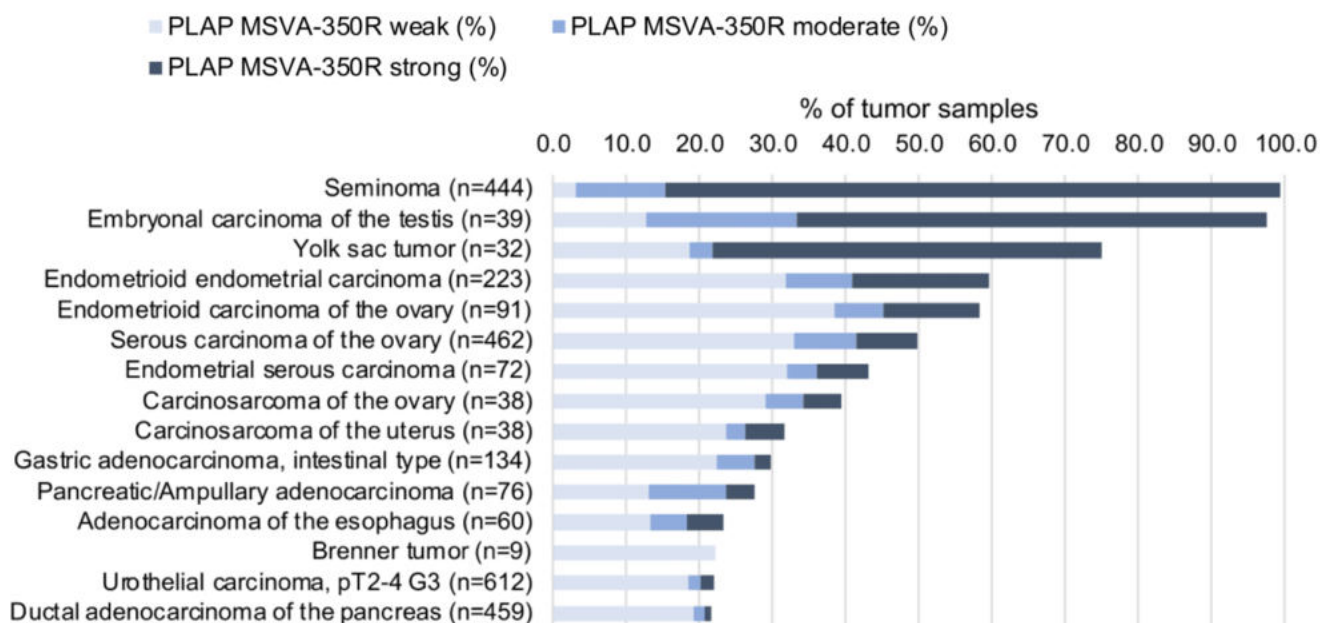
We provide our own validation data as well as links to other relevant sources such as the Human Protein Atlas, the TCGA database or published studies. Most of the information is underlined with images, graphics, and tables.

## Compatibility of Antibodies

We summarize data from studies that used the MSVA antibodies and our recommended protocols.

Data from the publication: "[Pattern of placental alkaline phosphatase \(PLAP\) expression in human tumors: a tissue microarray study on 12,381 tumors](#)". Published by Reiswich et al. in the journal of Pathology: Clinical Research, August 7th 2021. Summarized in own graphics:

### 1. PLAP staining in tumors "ranking order" by positivity with antibody MSVA-350R.



### 2. Table Clinico-pathological associations described by Reiswich et al. (p-value)

	Association P-value					
	Positivity rate	pT	pN	L1	L2	Microsatellite instability
Serous ovarian cancer	49,8	n.s.	n.s.	-	-	-
Endometrioid ovarian cancer	58,2	n.s.	n.s.	-	-	-
Endometrioid endometrial cancer	59,6	<b>0,0043</b>	n.s.	-	-	-
Colorectal adenocarcinoma	10,3	<b>0,0086</b>	<b>0,0058</b>	<b>0,0007</b>	<b>0,0222</b>	n.s.

n.s. = not significant (p>0.05), - = not analyzed



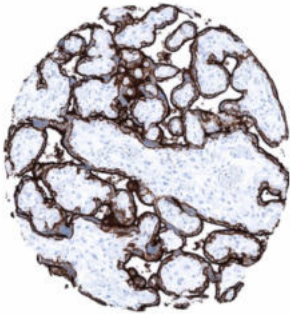
## Protocol Recommendations



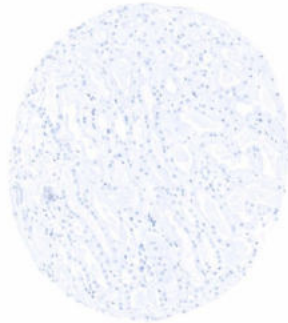
We offer protocol recommendations for manual protocols and Autostainers from Dako, Leica and Ventana.

### Agilent / Dako – Autostainer Link 48

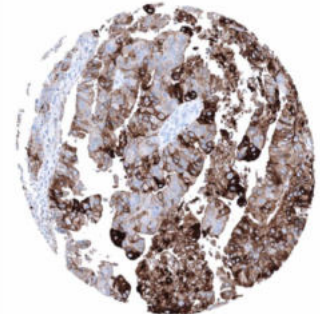
Pretreatment in PT-Link for 30 minutes at 95°C (pH high); FLEX peroxidase blocking for 5 minutes (room temperature), MSVA-350R 1:150 for 20 minutes (room temperature), FLEX+ mouse/rabbit (LINKER) for 15 minutes (room temperature), horseradish peroxidase (HRP) for 20 minutes (room temperature), FLEX DAB+Sub-Chromo for 10 minutes (room temperature), FLEX hematoxylin for 5 minutes (room temperature).



Dako – Placenta



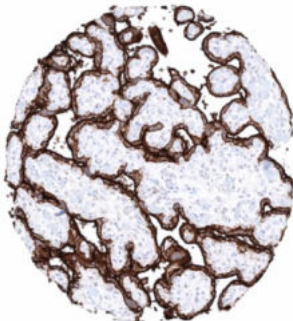
Dako – Kidney



Dako – Esophagus Adenocarcinoma

### Leica – BOND RX

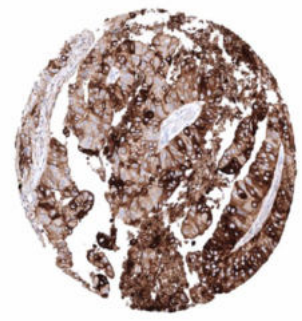
Dewax at 72°C for 30 seconds; Pretreatment in Bond Epitope Retrieval Solution (ER2 – EDTA pH9) for 20 minutes at 100°C; Peroxidase blocking for 5 minutes (room temperature), MSVA-350R 1:150 for 15 minutes (room temperature), Post primary (rabbit anti mouse) for 8 minutes (room temperature), Polymer (goat anti rabbit) for 8 minutes (room temperature), mixed DAB refine for 10 minutes (room temperature), hematoxylin for 5 minutes (room temperature).



Leica – Placenta



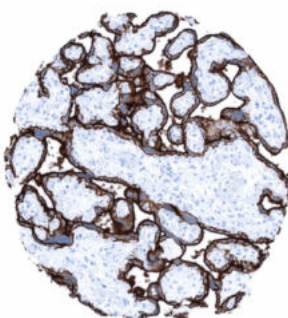
Leica – Kidney



Leica – Esophagus Adenocarcinoma

### Roche – Ventana Discovery ULTRA

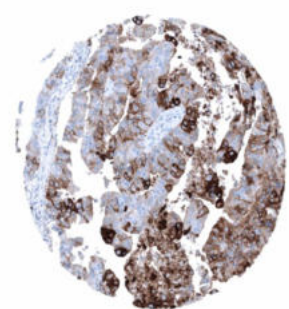
Pretreatment for 64 minutes at 100°C (pH 8,4); CM peroxidase blocking for 12 minutes (room temperature), MSVA-350R 1:150 for 20 minutes at 36°C, secondary antibody (anti-rabbit HQ) for 12 minutes at 36°C, anti-HQ HRP for 12 minutes at room temperature, DAB at room temperature, hematoxylin II at room temperature for 8 minutes, bluing reagent at room temperature for 4 minutes.



Ventana – Placenta



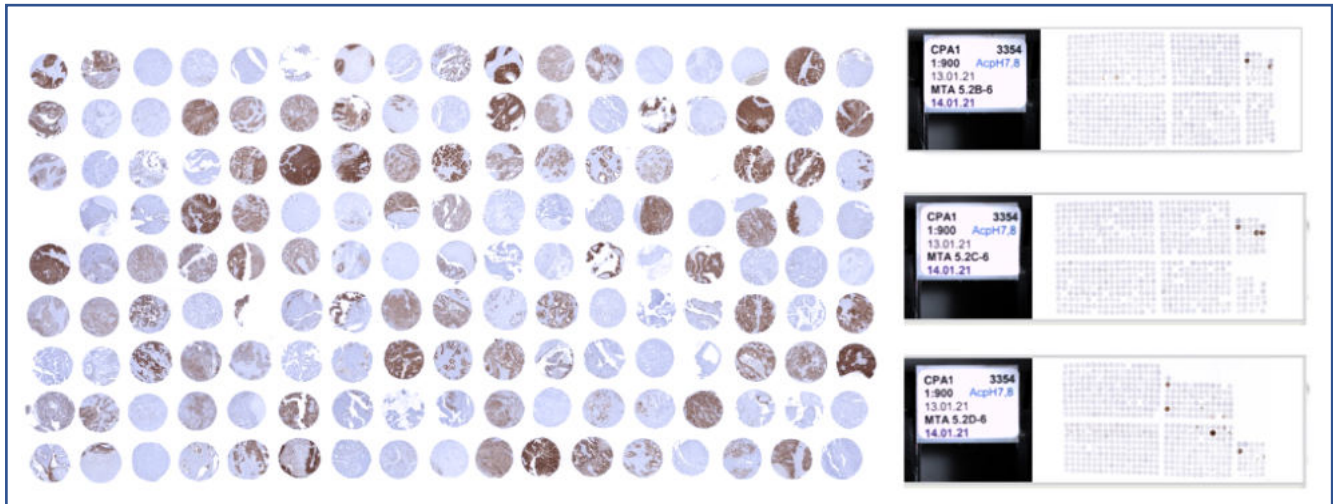
Ventana – Kidney



Ventana – Esophagus Adenocarcinoma

# MSVA Large-Scale Studies

It is often not known to researchers and pathologists where certain antibodies should stain and literature data on certain proteins show inconsistent results. In order to get a true picture of the staining behavior of an antibody MSVA supports IHC large-scale studies on thousands of different tumor samples.



Arginase-1 antibody clone MSVA-511R  
**14,912 samples**

MUC5AC antibody clone MSVA-109M  
**10,399 samples**

CDH16 antibody clone MSVA-516R  
**1,115 samples**

p16 antibody clone MSVA-016R  
**15,783 samples**

CPA1 antibody clone MSVA-601M  
**12,274 samples**

PD-L1 antibody clone MSVA-711R  
**14,000 samples**

CTLA-4 antibody clone MSVA-152R  
**4,582 samples**

PLAP antibody clone MSVA-350R  
**12,381 samples**

Cytokeratin 5 MSVA-605M &  
Cytokeratin 6 MSVA-606R  
**15,000 samples**

TACSTD2 / Trop-2 antibody clone MSVA-733  
**18,563 samples**

Cytokeratin 7 antibody clone MSVA-607R &  
Cytokeratin 20 antibody clone MSVA-620R  
**15,424 samples**

Thyroglobulin antibody clone MSVA-189R  
**9,974 samples**

Desmoglein 3 antibody clone MSVA-543M  
**15,869 samples**

Uroplakin 1A MSVA-735M  
**6,929 samples**

DOG1 antibody clone MSVA-201M  
**15,000 samples**

Uroplakin 1B antibody clone MSVA-734M  
**14,061 samples**

Mesothelin antibody clone MSVA-235M  
**12,679 samples**

Uroplakin 3B clone MSVA-736M  
**16,000 samples**

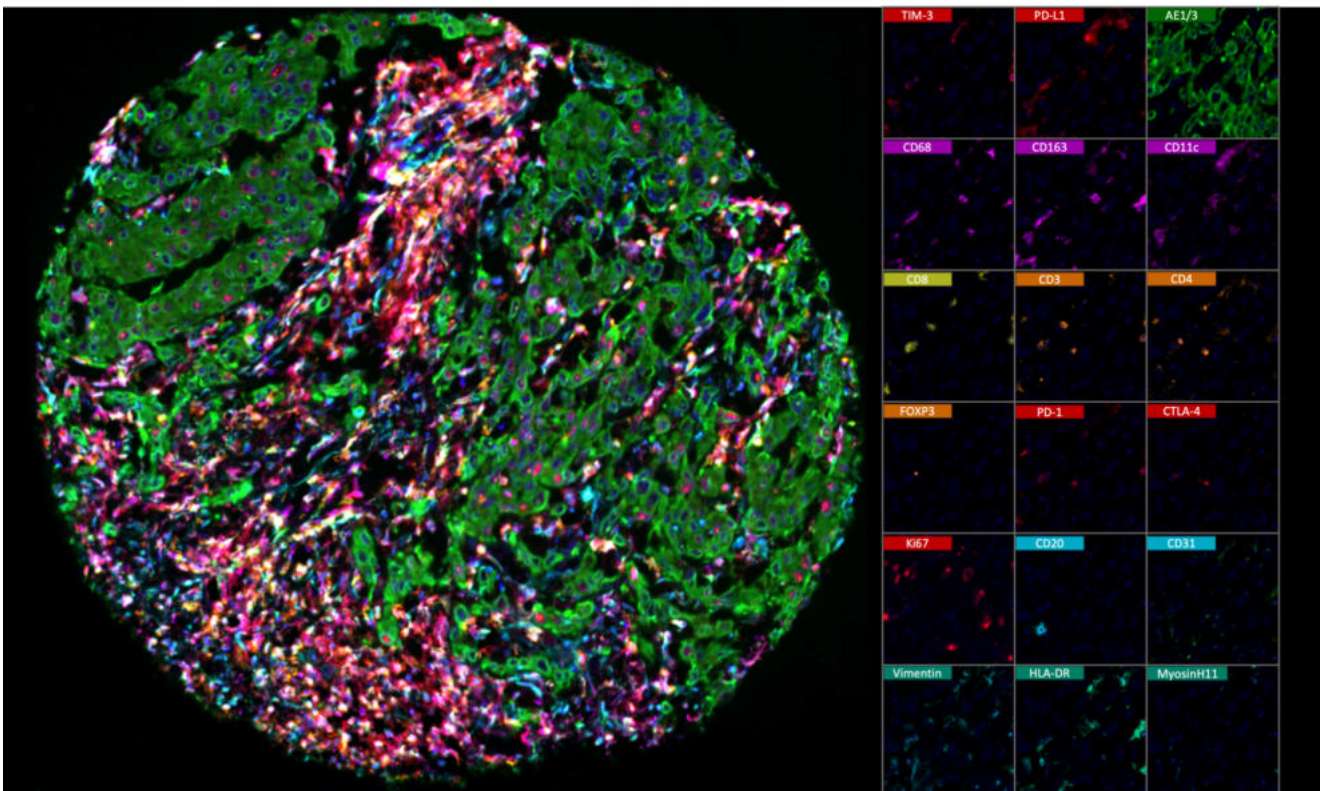
Villin antibody clone MSVA-459R  
**14,398 samples**

# Multiplex fluorescence immunohistochemistry (mflHC)

**Multiplex fluorescence immunohistochemistry (mflHC)** is the future of immunohistochemistry. It allows multiple antibodies to be applied to a tissue slide. Currently available devices allow the simultaneous analysis of **4** (Versa 8, Leica), **6** (Vectra Polaris, AKOYA) up to **more than 50** antibodies (CODEX, AKOYA). Sophisticated analysis frameworks use artificial intelligence to identify specific cell types defined by a combination of positive and negative antibody staining and the spatial relationship between those cell types.

Due to the high number of different “colors” on each stained slide and the impaired differentiation of morphological cell types in fluorescence imaging, visual quality control of individual antibodies becomes impossible. Non-specific or cross-reactive antibody staining of one or more antibodies used in a multicolor panel can seriously distort the data and conclusions from the experiments.

Hence the quality of the composite of antibodies used in a mflHC panel is crucial.



Here a mflHC panel with 18 antibodies used simultaneously. Image courtesy of Dr. Niclas C. Blessin.

**Also available BSA &  
Azide free**

# Antibody Index

## A

ACE2  
AIF1  
Androgen Receptor  
Arginase-1

## B

BRG1 / SMARCA4

## C

Calbindin 1  
Caldesmon  
Calponin  
CD1a  
CD3e  
CD4  
CD5  
CD7  
CD8  
CD20  
CD22  
CD23  
CD27  
CD31  
CD34  
CD44  
CD45  
CD45RA  
CD141  
CD163  
CDH16  
CDH17  
CEA  
CELA3B  
Chromogranin A  
Collagen IV  
CPA1 / Carboxypeptidase A1  
CTLA-4 / CD152  
Cystatin A  
Cytokeratin 5  
Cytokeratin 6  
Cytokeratin 7  
Cytokeratin 10  
Cytokeratin 13  
Cytokeratin 14  
Cytokeratin 15  
Cytokeratin 17  
Cytokeratin 18

## D

Cytokeratin 19  
Cytokeratin 20  
Cytokeratin Pan

Decorin  
Desmin  
Desmoglein 1  
Desmoglein 3  
DOG-1

## E

E-Cadherin  
Elastin  
EpCAM / CD326  
Epstein-Barr Virus (EBV)  
Estrogen Receptor

## F

FABP1  
Factor 13 alpha

## G

GAD2 / GAD65  
GATA3  
Glutamine Synthetase  
GLUT1  
GP2

## H

Helicobacter Pylori  
Hepatocyte Specific  
HER2 / CD340  
Histone H3  
HLA-DRA  
HLA-DRb

## I

IgA / Immunglobulin A  
IgD / Immunglobulin D  
Inhibin alpha  
INSM1

**K**

Ki-67  
KLK7

**M**

Mammaglobin  
MBP / Myelin Basic Protein  
MCM2  
MCM3  
MCM7  
Melan A CR (cross reactive)  
Melan A specific  
Mesothelin  
MPO/ Myeloperoxidase  
MSH2  
MSH6  
MUC1  
MUC5AC  
MUC6  
Myosin Heavy Chain 11

**N**

Napsin A  
NSE gamma  
Nucleolin

**O**

Occludin

**P**

p16  
p53  
p63  
PAPP-A  
PAX6  
PD-L1  
Periostin  
PGP9.5  
PLAP  
PMEL17 / gp100  
Progesterone Receptor  
Prostein  
PSA / Prostate Specific Antigen  
PSAP / ACP3 / ACPP  
PTH / Parathyroid Hormone

**S**

S100  
S100A12  
S100P  
SATB2  
Somatostatin  
SOX9  
STAR  
STING1  
Synaptophysin

**T**

TACSTD2 / Trop2  
TdT  
Thyroglobulin  
TIM3  
TOP2A / TOPO2A  
TRIM29  
TRPS1  
TFF1  
TTF-1

**U**

Uroplakin 1A  
Uroplakin 1B  
Uroplakin 3B

**V**

Villin  
Vimentin  
vWf

**X**

XRCC5/Ku-p80

**Z**

ZAP-70

<b>ACE2</b>		<b>Format</b>	<b>Status</b>	<b>Dilution</b>	<b>Volume</b>	<b>Catalog Number</b>
<b>Clone</b>	<b>MSVA-919R</b>	conc.	RUO	100-200	0,1 ml	3319-919R-01
<b>Host</b>	Recombinant Rabbit	conc.	RUO	100-200	0,5 ml	3319-919R-05
<b>Isotype</b>	IgG	conc.	RUO	100-200	1 ml	3319-919R-1

<b>AIF1</b>		<b>Format</b>	<b>Status</b>	<b>Dilution</b>	<b>Volume</b>	<b>Catalog Number</b>
<b>Clone</b>	<b>MSVA-955M</b>	conc.	RUO	100-200	0,1 ml	4444-955M-01
<b>Host</b>	Mouse	conc.	RUO	100-200	0,5 ml	4444-955M-05
<b>Isotype</b>	IgG	conc.	RUO	100-200	1 ml	4444-955M-1

<b>Androgen Receptor</b>		<b>Format</b>	<b>Status</b>	<b>Dilution</b>	<b>Volume</b>	<b>Catalog Number</b>
<b>Clone</b>	<b>MSVA-367R</b>	conc.	RUO	100-200	0,1 ml	2145-367R-01
<b>Host</b>	Recombinant Rabbit	conc.	RUO	100-200	0,5 ml	2145-367R-05
<b>Isotype</b>	IgG	conc.	RUO	100-200	1 ml	2145-367R-1

<b>Arginase-1</b>		<b>Format</b>	<b>Status</b>	<b>Dilution</b>	<b>Volume</b>	<b>Catalog Number</b>
<b>Clone</b>	<b>MSVA-511R</b>	conc.	RUO	100-200	0,1 ml	3320-511R-01
<b>Host</b>	Recombinant Rabbit	conc.	RUO	100-200	0,5 ml	3320-511R-05
<b>Isotype</b>	IgG	conc.	RUO	100-200	1 ml	3320-511R-1

<b>BRG1 / SMARCA4</b>		<b>Format</b>	<b>Status</b>	<b>Dilution</b>	<b>Volume</b>	<b>Catalog Number</b>
<b>Clone</b>	<b>MSVA-397R</b>	conc.	RUO	100-200	0,1 ml	5678-397R-01
<b>Host</b>	Recombinant Rabbit	conc.	RUO	100-200	0,5 ml	5678-397R-05
<b>Isotype</b>	IgG	conc.	RUO	100-200	1 ml	5678-397R-1

<b>Calbindin 1</b>		<b>Format</b>	<b>Status</b>	<b>Dilution</b>	<b>Volume</b>	<b>Catalog Number</b>
<b>Clone</b>	<b>MSVA-471M</b>	conc.	RUO	50-100	0,1 ml	3969-471M-01
<b>Host</b>	Mouse	conc.	RUO	50-100	0,5 ml	3969-471M-05
<b>Isotype</b>	IgG	conc.	RUO	50-100	1 ml	3969-471M-1

<b>Caldesmon</b>		<b>Format</b>	<b>Status</b>	<b>Dilution</b>	<b>Volume</b>	<b>Catalog Number</b>
<b>Clone</b>	<b>MSVA-538R</b>	conc.	RUO	100-200	0,1 ml	3859-538R-01
<b>Host</b>	Recombinant Rabbit	conc.	RUO	100-200	0,5 ml	3859-538R-05
<b>Isotype</b>	IgG	conc.	RUO	100-200	1 ml	3859-538R-1

<b>Calponin</b>		<b>Format</b>	<b>Status</b>	<b>Dilution</b>	<b>Volume</b>	<b>Catalog Number</b>
<b>Clone</b>	<b>MSVA-455R</b>	conc.	RUO	100-200	0,1 ml	2446-455R-01
<b>Host</b>	Recombinant Rabbit	conc.	RUO	100-200	0,5 ml	2446-455R-05
<b>Isotype</b>	IgG	conc.	RUO	100-200	1 ml	2446-455R-1

<b>CD1a</b>		<b>Format</b>	<b>Status</b>	<b>Dilution</b>	<b>Volume</b>	<b>Catalog Number</b>
<b>Clone</b>	<b>MSVA-001M</b>	conc.	RUO	100-200	0,1 ml	2682-001M-01
<b>Host</b>	Recombinant Mouse	conc.	RUO	100-200	0,5 ml	2682-001M-05
<b>Isotype</b>	IgG	conc.	RUO	100-200	1 ml	2682-001M-1

<b>CD3e</b>		<b>Format</b>	<b>Status</b>	<b>Dilution</b>	<b>Volume</b>	<b>Catalog Number</b>
<b>Clone</b>	<b>MSVA-003R</b>	conc.	RUO	100-200	0,1 ml	2465-003R-01
Host	Recombinant Rabbit	conc.	RUO	100-200	0,5 ml	2465-003R-05
Isotype	IgG	conc.	RUO	100-200	1 ml	2465-003R-1

<b>CD4</b>		<b>Format</b>	<b>Status</b>	<b>Dilution</b>	<b>Volume</b>	<b>Catalog Number</b>
<b>Clone</b>	<b>MSVA-004R</b>	conc.	RUO	100-200	0,1 ml	2278-004R-01
Host	Recombinant Rabbit	conc.	RUO	100-200	0,5 ml	2278-004R-05
Isotype	IgG	conc.	RUO	100-200	1 ml	2278-004R-1

<b>CD5</b>		<b>Format</b>	<b>Status</b>	<b>Dilution</b>	<b>Volume</b>	<b>Catalog Number</b>
<b>Clone</b>	<b>MSVA-005R</b>	conc.	RUO	100-200	0,1 ml	3323-005R-01
Host	Recombinant Rabbit	conc.	RUO	100-200	0,5 ml	3323-005R-05
Isotype	IgG	conc.	RUO	100-200	1 ml	3323-005R-1

<b>CD7</b>		<b>Format</b>	<b>Status</b>	<b>Dilution</b>	<b>Volume</b>	<b>Catalog Number</b>
<b>Clone</b>	<b>MSVA-007R</b>	conc.	RUO	100-200	0,1 ml	2471-007R-01
Host	Recombinant Rabbit	conc.	RUO	100-200	0,5 ml	2471-007R-05
Isotype	IgG	conc.	RUO	100-200	1 ml	2471-007R-1

<b>CD8</b>		<b>Format</b>	<b>Status</b>	<b>Dilution</b>	<b>Volume</b>	<b>Catalog Number</b>
<b>Clone</b>	<b>MSVA-008R</b>	conc.	RUO	100-200	0,1 ml	2474-008R-01
Host	Recombinant Rabbit	conc.	RUO	100-200	0,5 ml	2474-008R-05
Isotype	IgG	conc.	RUO	100-200	1 ml	2474-008R-1

<b>CD20</b>		<b>Format</b>	<b>Status</b>	<b>Dilution</b>	<b>Volume</b>	<b>Catalog Number</b>
<b>Clone</b>	<b>MSVA-020R</b>	conc.	RUO	100-200	0,1 ml	2483-020R-01
Host	Recombinant Rabbit	conc.	RUO	100-200	0,5 ml	2483-020R-05
Isotype	IgG	conc.	RUO	100-200	1 ml	2483-020R-1

<b>CD22</b>		<b>Format</b>	<b>Status</b>	<b>Dilution</b>	<b>Volume</b>	<b>Catalog Number</b>
<b>Clone</b>	<b>MSVA-022R</b>	conc.	RUO	100-200	0,1 ml	2492-022R-01
Host	Recombinant Rabbit	conc.	RUO	100-200	0,5 ml	2492-022R-05
Isotype	IgG	conc.	RUO	100-200	1 ml	2492-022R-1

<b>CD23</b>		<b>Format</b>	<b>Status</b>	<b>Dilution</b>	<b>Volume</b>	<b>Catalog Number</b>
<b>Clone</b>	<b>MSVA-023M</b>	conc.	RUO	100-200	0,1 ml	4594-023M-01
Host	Mouse	conc.	RUO	100-200	0,5 ml	4594-023M-05
Isotype	IgG	conc.	RUO	100-200	1 ml	4594-023M-1

<b>CD27</b>		<b>Format</b>	<b>Status</b>	<b>Dilution</b>	<b>Volume</b>	<b>Catalog Number</b>
<b>Clone</b>	<b>MSVA-027M</b>	conc.	RUO	100-200	0,1 ml	2503-027M-01
Host	Mouse	conc.	RUO	100-200	0,5 ml	2503-027M-05
Isotype	IgG	conc.	RUO	100-200	1 ml	2503-027M-1

<b>CD31</b>		<b>Format</b>	<b>Status</b>	<b>Dilution</b>	<b>Volume</b>	<b>Catalog Number</b>
<b>Clone</b>	<b>MSVA-031M</b>	conc.	RUO	100-200	0,1 ml	2517-031M-01
Host	Mouse	conc.	RUO	100-200	0,5 ml	2517-031M-05
Isotype	IgG	conc.	RUO	100-200	1 ml	2517-031M-1

<b>CD34</b>		<b>Format</b>	<b>Status</b>	<b>Dilution</b>	<b>Volume</b>	<b>Catalog Number</b>
<b>Clone</b>	<b>MSVA-034R</b>	conc.	RUO	100-200	0,1 ml	2431-034R-01
Host	Recombinant Rabbit	conc.	RUO	100-200	0,5 ml	2431-034R-05
Isotype	IgG	conc.	RUO	100-200	1 ml	2431-034R-1

<b>CD44</b>		<b>Format</b>	<b>Status</b>	<b>Dilution</b>	<b>Volume</b>	<b>Catalog Number</b>
<b>Clone</b>	<b>MSVA-044R</b>	conc.	RUO	100-200	0,1 ml	2675-044R-01
Host	Recombinant Rabbit	conc.	RUO	100-200	0,5 ml	2675-044R-05
Isotype	IgG	conc.	RUO	100-200	1 ml	2675-044R-1

<b>CD45</b>		<b>Format</b>	<b>Status</b>	<b>Dilution</b>	<b>Volume</b>	<b>Catalog Number</b>
<b>Clone</b>	<b>MSVA-045R</b>	conc.	RUO	100-200	0,1 ml	3333-045R-01
Host	Recombinant Rabbit	conc.	RUO	100-200	0,5 ml	3333-045R-05
Isotype	IgG	conc.	RUO	100-200	1 ml	3333-045R-1

<b>CD45RA</b>		<b>Format</b>	<b>Status</b>	<b>Dilution</b>	<b>Volume</b>	<b>Catalog Number</b>
<b>Clone</b>	<b>MSVA-472M</b>	conc.	RUO	100-200	0,1 ml	2193-472M-01
Host	Mouse	conc.	RUO	100-200	0,5 ml	2193-472M-05
Isotype	IgG	conc.	RUO	100-200	1 ml	2193-472M-1

<b>CD141</b>		<b>Format</b>	<b>Status</b>	<b>Dilution</b>	<b>Volume</b>	<b>Catalog Number</b>
<b>Clone</b>	<b>MSVA-141M</b>	conc.	RUO	100-200	0,1 ml	4706-141M-01
Host	Recombinant Mouse	conc.	RUO	100-200	0,5 ml	4706-141M-05
Isotype	IgG	conc.	RUO	100-200	1 ml	4706-141M-1

<b>CD163</b>		<b>Format</b>	<b>Status</b>	<b>Dilution</b>	<b>Volume</b>	<b>Catalog Number</b>
<b>Clone</b>	<b>MSVA-163M</b>	conc.	RUO	100-200	0,1 ml	2335-163M-01
Host	Mouse	conc.	RUO	100-200	0,5 ml	2335-163M-05
Isotype	IgG	conc.	RUO	100-200	1 ml	2335-163M-1

<b>CDH16</b>		<b>Format</b>	<b>Status</b>	<b>Dilution</b>	<b>Volume</b>	<b>Catalog Number</b>
<b>Clone</b>	<b>MSVA-516R</b>	conc.	RUO	100-200	0,1 ml	4036-516R-01
Host	Recombinant Rabbit	conc.	RUO	100-200	0,5 ml	4036-516R-05
Isotype	IgG	conc.	RUO	100-200	1 ml	4036-516R-1

<b>CDH17</b>		<b>Format</b>	<b>Status</b>	<b>Dilution</b>	<b>Volume</b>	<b>Catalog Number</b>
<b>Clone</b>	<b>MSVA-517M</b>	conc.	RUO	100-200	0,1 ml	3687-517M-01
Host	Mouse	conc.	RUO	100-200	0,5 ml	3687-517M-05
Isotype	IgG	conc.	RUO	100-200	1 ml	3687-517M-1



CEA		Format	Status	Dilution	Volume	Catalog Number
Clone	<b>MSVA-465R</b>	conc.	RUO	100-200	0,1 ml	2563-465R-01
Host	Recombinant Rabbit	conc.	RUO	100-200	0,5 ml	2563-465R-05
Isotype	IgG	conc.	RUO	100-200	1 ml	2563-465R-1

CELA3B		Format	Status	Dilution	Volume	Catalog Number
Clone	<b>MSVA-410M</b>	conc.	RUO	100-200	0,1 ml	3682-410M-01
Host	Recombinant Mouse	conc.	RUO	100-200	0,5 ml	3682-410M-05
Isotype	IgG	conc.	RUO	100-200	1 ml	3682-410M-1

Chromogranin A		Format	Status	Dilution	Volume	Catalog Number
Clone	<b>MSVA-380R</b>	conc.	RUO	100-200	0,1 ml	2175-380R-01
Host	Recombinant Rabbit	conc.	RUO	100-200	0,5 ml	2175-380R-05
Isotype	IgG	conc.	RUO	100-200	1 ml	2175-380R-1

Collagen IV		Format	Status	Dilution	Volume	Catalog Number
Clone	<b>MSVA-704R</b>	conc.	RUO	100-200	0,1 ml	3365-704R-01
Host	Recombinant Rabbit	conc.	RUO	100-200	0,5 ml	3365-704R-05
Isotype	IgG	conc.	RUO	100-200	1 ml	3365-704R-1

CPA1 / Carboxypeptidase A1		Format	Status	Dilution	Volume	Catalog Number
Clone	<b>MSVA-601M</b>	conc.	RUO	100-200	0,1 ml	3354-601M-01
Host	Mouse	conc.	RUO	100-200	0,5 ml	3354-601M-05
Isotype	IgG	conc.	RUO	100-200	1 ml	3354-601M-1

CTLA-4 / CD152		Format	Status	Dilution	Volume	Catalog Number
Clone	<b>MSVA-152R</b>	conc.	RUO	50-100	0,1 ml	3451-152R-01
Host	Recombinant Rabbit	conc.	RUO	50-100	0,5 ml	3451-152R-05
Isotype	IgG	conc.	RUO	50-100	1 ml	3451-152R-1

Cystatin A		Format	Status	Dilution	Volume	Catalog Number
Clone	<b>MSVA-461M</b>	conc.	RUO	100-200	0,1 ml	3938-461M-01
Host	Mouse	conc.	RUO	100-200	0,5 ml	3938-461M-05
Isotype	IgG	conc.	RUO	100-200	1 ml	3938-461M-1

Cytokeratin 5		Format	Status	Dilution	Volume	Catalog Number
Clone	<b>MSVA-605M</b>	conc.	RUO	100-200	0,1 ml	2608-605M-01
Host	Recombinant Mouse	conc.	RUO	100-200	0,5 ml	2608-605M-05
Isotype	IgG	conc.	RUO	100-200	1 ml	2608-605M-1

Cytokeratin 6		Format	Status	Dilution	Volume	Catalog Number
Clone	<b>MSVA-606R</b>	conc.	RUO	100-200	0,1 ml	2616-606R-01
Host	Recombinant Rabbit	conc.	RUO	100-200	0,5 ml	2616-606R-05
Isotype	IgG	conc.	RUO	100-200	1 ml	2616-606R-1

<b>Cytokeratin 7</b>		<b>Format</b>	<b>Status</b>	<b>Dilution</b>	<b>Volume</b>	<b>Catalog Number</b>
<b>Clone</b>	<b>MSVA-607R</b>	conc.	RUO	100-200	0,1 ml	2230-607R-01
<b>Host</b>	Recombinant Rabbit	conc.	RUO	100-200	0,5 ml	2230-607R-05
<b>Isotype</b>	IgG	conc.	RUO	100-200	1 ml	2230-607R-1

<b>Cytokeratin 10</b>		<b>Format</b>	<b>Status</b>	<b>Dilution</b>	<b>Volume</b>	<b>Catalog Number</b>
<b>Clone</b>	<b>MSVA-610M</b>	conc.	RUO	100-200	0,1 ml	2593-610M-01
<b>Host</b>	Recombinant Mouse	conc.	RUO	100-200	0,5 ml	2593-610M-05
<b>Isotype</b>	IgG	conc.	RUO	100-200	1 ml	2593-610M-1

<b>Cytokeratin 13</b>		<b>Format</b>	<b>Status</b>	<b>Dilution</b>	<b>Volume</b>	<b>Catalog Number</b>
<b>Clone</b>	<b>MSVA-613M</b>	conc.	RUO	100-200	0,1 ml	2373-613M-01
<b>Host</b>	Mouse	conc.	RUO	100-200	0,5 ml	2373-613M-05
<b>Isotype</b>	IgG	conc.	RUO	100-200	1 ml	2373-613M-1

<b>Cytokeratin 14</b>		<b>Format</b>	<b>Status</b>	<b>Dilution</b>	<b>Volume</b>	<b>Catalog Number</b>
<b>Clone</b>	<b>MSVA-614R</b>	conc.	RUO	100-200	0,1 ml	2256-614R-01
<b>Host</b>	Recombinant Rabbit	conc.	RUO	100-200	0,5 ml	2256-614R-05
<b>Isotype</b>	IgG	conc.	RUO	100-200	1 ml	2256-614R-1

<b>Cytokeratin 15</b>		<b>Format</b>	<b>Status</b>	<b>Dilution</b>	<b>Volume</b>	<b>Catalog Number</b>
<b>Clone</b>	<b>MSVA-615M</b>	conc.	RUO	50-100	0,1 ml	2748-615M-01
<b>Host</b>	Mouse	conc.	RUO	50-100	0,5 ml	2748-615M-05
<b>Isotype</b>	IgG	conc.	RUO	50-100	1 ml	2748-615M-1

<b>Cytokeratin 17</b>		<b>Format</b>	<b>Status</b>	<b>Dilution</b>	<b>Volume</b>	<b>Catalog Number</b>
<b>Clone</b>	<b>MSVA-517M</b>	conc.	RUO	100-200	0,1 ml	3687-517M-01
<b>Host</b>	Mouse	conc.	RUO	100-200	0,5 ml	3687-517M-05
<b>Isotype</b>	IgG	conc.	RUO	100-200	1 ml	3687-517M-1

<b>Cytokeratin 18</b>		<b>Format</b>	<b>Status</b>	<b>Dilution</b>	<b>Volume</b>	<b>Catalog Number</b>
<b>Clone</b>	<b>MSVA-118R</b>	conc.	RUO	100-200	0,1 ml	2205-118R-01
<b>Host</b>	Recombinant Rabbit	conc.	RUO	100-200	0,5 ml	2205-118R-05
<b>Isotype</b>	IgG	conc.	RUO	100-200	1 ml	2205-118R-1

<b>Cytokeratin 19</b>		<b>Format</b>	<b>Status</b>	<b>Dilution</b>	<b>Volume</b>	<b>Catalog Number</b>
<b>Clone</b>	<b>MSVA-119M</b>	conc.	RUO	100-200	0,1 ml	2273-119M-01
<b>Host</b>	Mouse	conc.	RUO	100-200	0,5 ml	2273-119M-05
<b>Isotype</b>	IgG	conc.	RUO	100-200	1 ml	2273-119M-1

<b>Cytokeratin 20</b>		<b>Format</b>	<b>Status</b>	<b>Dilution</b>	<b>Volume</b>	<b>Catalog Number</b>
<b>Clone</b>	<b>MSVA-620R</b>	conc.	RUO	100-200	0,1 ml	2238-620R-01
<b>Host</b>	Recombinant Rabbit	conc.	RUO	100-200	0,5 ml	2238-620R-05
<b>Isotype</b>	IgG	conc.	RUO	100-200	1 ml	2238-620R-1

<b>Cytokeratin Pan</b>		<b>Format</b>	<b>Status</b>	<b>Dilution</b>	<b>Volume</b>	<b>Catalog Number</b>
<b>Clone</b>	<b>MSVA-000R</b>	conc.	RUO	100-200	0,1 ml	2105-000R-01
<b>Host</b>	Recombinant Rabbit	conc.	RUO	100-200	0,5 ml	2105-000R-05
<b>Isotype</b>	IgG	conc.	RUO	100-200	1 ml	2105-000R-1

<b>Decorin</b>		<b>Format</b>	<b>Status</b>	<b>Dilution</b>	<b>Volume</b>	<b>Catalog Number</b>
<b>Clone</b>	<b>MSVA-537R</b>	conc.	RUO	100-200	0,1 ml	4408-537R-01
<b>Host</b>	Recombinant Rabbit	conc.	RUO	100-200	0,5 ml	4408-537R-05
<b>Isotype</b>	IgG	conc.	RUO	100-200	1 ml	4408-537R-1

<b>Desmin</b>		<b>Format</b>	<b>Status</b>	<b>Dilution</b>	<b>Volume</b>	<b>Catalog Number</b>
<b>Clone</b>	<b>MSVA-651M</b>	conc.	RUO	100-200	0,1 ml	2732-651M-01
<b>Host</b>	Recombinant Mouse	conc.	RUO	100-200	0,5 ml	2732-651M-05
<b>Isotype</b>	IgG	conc.	RUO	100-200	1 ml	2732-651M-1

<b>Desmoglein 1</b>		<b>Format</b>	<b>Status</b>	<b>Dilution</b>	<b>Volume</b>	<b>Catalog Number</b>
<b>Clone</b>	<b>MSVA-544M</b>	conc.	RUO	75-150	0,1 ml	4420-544M-01
<b>Host</b>	Mouse	conc.	RUO	75-150	0,5 ml	4420-544M-05
<b>Isotype</b>	IgG	conc.	RUO	75-150	1 ml	4420-544M-1

<b>Desmoglein 3</b>		<b>Format</b>	<b>Status</b>	<b>Dilution</b>	<b>Volume</b>	<b>Catalog Number</b>
<b>Clone</b>	<b>MSVA-543M</b>	conc.	RUO	75-150	0,1 ml	4355-543M-01
<b>Host</b>	Mouse	conc.	RUO	75-150	0,5 ml	4355-543M-05
<b>Isotype</b>	IgG	conc.	RUO	75-150	1 ml	4355-543M-1

<b>DOG-1</b>		<b>Format</b>	<b>Status</b>	<b>Dilution</b>	<b>Volume</b>	<b>Catalog Number</b>
<b>Clone</b>	<b>MSVA-201M</b>	conc.	RUO	100-200	0,1 ml	2170-201M-01
<b>Host</b>	Mouse	conc.	RUO	100-200	0,5 ml	2170-201M-05
<b>Isotype</b>	IgG	conc.	RUO	100-200	1 ml	2170-201M-1

<b>E-cadherin</b>		<b>Format</b>	<b>Status</b>	<b>Dilution</b>	<b>Volume</b>	<b>Catalog Number</b>
<b>Clone</b>	<b>MSVA-035R</b>	conc.	RUO	100-200	0,1 ml	2140-035R-01
<b>Host</b>	Recombinant Rabbit	conc.	RUO	100-200	0,5 ml	2140-035R-05
<b>Isotype</b>	IgG	conc.	RUO	100-200	1 ml	2140-035R-1

<b>Elastin</b>		<b>Format</b>	<b>Status</b>	<b>Dilution</b>	<b>Volume</b>	<b>Catalog Number</b>
<b>Clone</b>	<b>MSVA-648R</b>	conc.	RUO	100-200	0,1 ml	4448-648R-01
<b>Host</b>	Recombinant Rabbit	conc.	RUO	100-200	0,5 ml	4448-648R-05
<b>Isotype</b>	IgG	conc.	RUO	100-200	1 ml	4448-648R-1

<b>EpCAM / CD326</b>		<b>Format</b>	<b>Status</b>	<b>Dilution</b>	<b>Volume</b>	<b>Catalog Number</b>
<b>Clone</b>	<b>MSVA-326R</b>	conc.	RUO	100-200	0,1 ml	2315-326R-01
<b>Host</b>	Recombinant Rabbit	conc.	RUO	100-200	0,5 ml	2315-326R-05
<b>Isotype</b>	IgG	conc.	RUO	100-200	1 ml	2315-326R-1

<b>Epstein-Barr Virus (EBV)</b>		<b>Format</b>	<b>Status</b>	<b>Dilution</b>	<b>Volume</b>	<b>Catalog Number</b>
<b>Clone</b>	<b>MSVA-539M</b>	conc.	RUO	100-200	0,1 ml	5407-539R-01
Host	Mouse	conc.	RUO	100-200	0,5 ml	5407-539R-05
Isotype	IgG	conc.	RUO	100-200	1 ml	5407-539R-1

<b>Estrogen Receptor</b>		<b>Format</b>	<b>Status</b>	<b>Dilution</b>	<b>Volume</b>	<b>Catalog Number</b>
<b>Clone</b>	<b>MSVA-564R</b>	conc.	RUO	100-200	0,1 ml	4670-564R-01
Host	Recombinant Rabbit	conc.	RUO	100-200	0,5 ml	4670-564R-05
Isotype	IgG	conc.	RUO	100-200	1 ml	4670-564R-1

<b>FABP1</b>		<b>Format</b>	<b>Status</b>	<b>Dilution</b>	<b>Volume</b>	<b>Catalog Number</b>
<b>Clone</b>	<b>MSVA-501M</b>	conc.	RUO	100-200	0,1 ml	3737-501M-01
Host	Mouse	conc.	RUO	100-200	0,5 ml	3737-501M-01
Isotype	IgG	conc.	RUO	100-200	1 ml	3737-501M-01

<b>Factor 13 alpha</b>		<b>Format</b>	<b>Status</b>	<b>Dilution</b>	<b>Volume</b>	<b>Catalog Number</b>
<b>Clone</b>	<b>MSVA-813R</b>	conc.	RUO	100-200	0,1 ml	3924-813R-01
Host	Recombinant Rabbit	conc.	RUO	100-200	0,5 ml	3924-813R-05
Isotype	IgG	conc.	RUO	100-200	1 ml	3924-813R-1

<b>GAD2 / GAD65</b>		<b>Format</b>	<b>Status</b>	<b>Dilution</b>	<b>Volume</b>	<b>Catalog Number</b>
<b>Clone</b>	<b>MSVA-602M</b>	conc.	RUO	100-200	0,1 ml	4975-602M-01
Host	Mouse	conc.	RUO	100-200	0,5 ml	4975-602M-05
Isotype	IgG	conc.	RUO	100-200	1 ml	4975-602M-1

<b>GATA3</b>		<b>Format</b>	<b>Status</b>	<b>Dilution</b>	<b>Volume</b>	<b>Catalog Number</b>
<b>Clone</b>	<b>MSVA-450M</b>	conc.	RUO	50-100	0,1 ml	2980-450M-01
Host	Mouse	conc.	RUO	50-100	0,5 ml	2980-450M-05
Isotype	IgG	conc.	RUO	50-100	1 ml	2980-450M-1

<b>GLUT1</b>		<b>Format</b>	<b>Status</b>	<b>Dilution</b>	<b>Volume</b>	<b>Catalog Number</b>
<b>Clone</b>	<b>MSVA-401R</b>	conc.	RUO	100-200	0,1 ml	4457-401R-01
Host	Recombinant Rabbit	conc.	RUO	100-200	0,5 ml	4457-401R-05
Isotype	IgG	conc.	RUO	100-200	1 ml	4457-401R-1

<b>Glutamine Synthetase</b>		<b>Format</b>	<b>Status</b>	<b>Dilution</b>	<b>Volume</b>	<b>Catalog Number</b>
<b>Clone</b>	<b>MSVA-750M</b>	conc.	RUO	100-200	0,1 ml	4565-750M-01
Host	Mouse	conc.	RUO	100-200	0,5 ml	4565-750M-05
Isotype	IgG	conc.	RUO	100-200	1 ml	4565-750M-1

<b>GP2</b>		<b>Format</b>	<b>Status</b>	<b>Dilution</b>	<b>Volume</b>	<b>Catalog Number</b>
<b>Clone</b>	<b>MSVA-475M</b>	conc.	RUO	100-200	0,1 ml	3409-475M-01
Host	Mouse	conc.	RUO	100-200	0,5 ml	3409-475M-05
Isotype	IgG	conc.	RUO	100-200	1 ml	3409-475M-1

<b>Helicobacter Pylori</b>		<b>Format</b>	<b>Status</b>	<b>Dilution</b>	<b>Volume</b>	<b>Catalog Number</b>
<b>Clone</b>	<b>MSVA-466M</b>	conc.	RUO	100-200	0,1 ml	5099—466M-01
Host	Mouse	conc.	RUO	100-200	0,5 ml	5099—466M-05
Isotype	IgG	conc.	RUO	100-200	1 ml	5099—466M-1

<b>Hepatocyte Specific</b>		<b>Format</b>	<b>Status</b>	<b>Dilution</b>	<b>Volume</b>	<b>Catalog Number</b>
<b>Clone</b>	<b>MSVA-OCE5</b>	conc.	RUO	100-200	0,1 ml	5091-OCE5-01
Host	Mouse	conc.	RUO	100-200	0,5 ml	5091-OCE5-05
Isotype	IgG	conc.	RUO	100-200	1 ml	5091-OCE5-1

<b>HER2 / CD340</b>		<b>Format</b>	<b>Status</b>	<b>Dilution</b>	<b>Volume</b>	<b>Catalog Number</b>
<b>Clone</b>	<b>MSVA-340R</b>	conc.	RUO	25-50	0,1 ml	3325-340R-01
Host	Recombinant Rabbit	conc.	RUO	25-50	0,5 ml	3325-340R-05
Isotype	IgG	conc.	RUO	25-50	1 ml	3325-340R-1

<b>Histone H3</b>		<b>Format</b>	<b>Status</b>	<b>Dilution</b>	<b>Volume</b>	<b>Catalog Number</b>
<b>Clone</b>	<b>MSVA-903M</b>	conc.	RUO	100-200	0,1 ml	3122-903M-01
Host	Mouse	conc.	RUO	100-200	0,5 ml	3122-903M-05
Isotype	IgG	conc.	RUO	100-200	1 ml	3122-903M-1

<b>HLA-DRa</b>		<b>Format</b>	<b>Status</b>	<b>Dilution</b>	<b>Volume</b>	<b>Catalog Number</b>
<b>Clone</b>	<b>MSVA-470R</b>	conc.	RUO	100-200	0,1 ml	3328-470R-01
Host	Recombinant Rabbit	conc.	RUO	100-200	0,5 ml	3328-470R-05
Isotype	IgG	conc.	RUO	100-200	1 ml	3328-470R-1

<b>HLA-DRb</b>		<b>Format</b>	<b>Status</b>	<b>Dilution</b>	<b>Volume</b>	<b>Catalog Number</b>
<b>Clone</b>	<b>MSVA-478R</b>	conc.	RUO	100-200	0,1 ml	4232-478R-01
Host	Recombinant Rabbit	conc.	RUO	100-200	0,5 ml	4232-478R-05
Isotype	IgG	conc.	RUO	100-200	1 ml	4232-478R-1

<b>IgA / Immunglobulin A</b>		<b>Format</b>	<b>Status</b>	<b>Dilution</b>	<b>Volume</b>	<b>Catalog Number</b>
<b>Clone</b>	<b>MSVA-700R</b>	conc.	RUO	100-200	0,1 ml	3489-700R-01
Host	Recombinant Rabbit	conc.	RUO	100-200	0,5 ml	3489-700R-05
Isotype	IgG	conc.	RUO	100-200	1 ml	3489-700R-1

<b>IgD / Immunglobulin D</b>		<b>Format</b>	<b>Status</b>	<b>Dilution</b>	<b>Volume</b>	<b>Catalog Number</b>
<b>Clone</b>	<b>MSVA-701R</b>	conc.	RUO	100-200	0,1 ml	3485-701R-01
Host	Recombinant Rabbit	conc.	RUO	100-200	0,5 ml	3485-701R-05
Isotype	IgG	conc.	RUO	100-200	1 ml	3485-701R-1

<b>Inhibin alpha</b>		<b>Format</b>	<b>Status</b>	<b>Dilution</b>	<b>Volume</b>	<b>Catalog Number</b>
<b>Clone</b>	<b>MSVA-561R</b>	conc.	RUO	75-150	0,1 ml	2879-561R-01
Host	Recombinant Rabbit	conc.	RUO	75-150	0,5 ml	2879-561R-05
Isotype	IgG	conc.	RUO	75-150	1 ml	2879-561R-1

<b>INSM1</b>		<b>Format</b>	<b>Status</b>	<b>Dilution</b>	<b>Volume</b>	<b>Catalog Number</b>
<b>Clone</b>	<b>MSVA-456R</b>	conc.	RUO	75-150	0,1 ml	3218-456R-01
Host	Recombinant Rabbit	conc.	RUO	75-150	0,5 ml	3218-456R-05
Isotype	IgG	conc.	RUO	75-150	1 ml	3218-456R-1

<b>Ki-67</b>		<b>Format</b>	<b>Status</b>	<b>Dilution</b>	<b>Volume</b>	<b>Catalog Number</b>
<b>Clone</b>	<b>MSVA-267M</b>	conc.	RUO	100-200	0,1 ml	2082-267M-01
Host	Mouse	conc.	RUO	100-200	0,5 ml	2082-267M-05
Isotype	IgG	conc.	RUO	100-200	1 ml	2082-267M-1

<b>KLK7</b>		<b>Format</b>	<b>Status</b>	<b>Dilution</b>	<b>Volume</b>	<b>Catalog Number</b>
<b>Clone</b>	<b>MSVA-707M</b>	conc.	RUO	100-200	0,1 ml	4860-707M-01
Host	Mouse	conc.	RUO	100-200	0,5 ml	4860-707M-05
Isotype	IgG	conc.	RUO	100-200	1 ml	4860-707M-1

<b>Mammaglobin</b>		<b>Format</b>	<b>Status</b>	<b>Dilution</b>	<b>Volume</b>	<b>Catalog Number</b>
<b>Clone</b>	<b>MSVA-457R</b>	conc.	RUO	100-200	0,1 ml	2668-457R-01
Host	Recombinant Rabbit	conc.	RUO	100-200	0,5 ml	2668-457R-05
Isotype	IgG	conc.	RUO	100-200	1 ml	2668-457R-1

<b>MBP / Myelin Basic Protein</b>		<b>Format</b>	<b>Status</b>	<b>Dilution</b>	<b>Volume</b>	<b>Catalog Number</b>
<b>Clone</b>	<b>MSVA-390R</b>	conc.	RUO	100-200	0,1 ml	3398-390R-01
Host	Recombinant Rabbit	conc.	RUO	100-200	0,5 ml	3398-390R-05
Isotype	IgG	conc.	RUO	100-200	1 ml	3398-390R-1

<b>MCM2</b>		<b>Format</b>	<b>Status</b>	<b>Dilution</b>	<b>Volume</b>	<b>Catalog Number</b>
<b>Clone</b>	<b>MSVA-502R</b>	conc.	RUO	100-200	0,1 ml	5880-502R-01
Host	Recombinant Rabbit	conc.	RUO	100-200	0,5 ml	5880-502R-05
Isotype	IgG	conc.	RUO	100-200	1 ml	5880-502R-1

<b>MCM3</b>		<b>Format</b>	<b>Status</b>	<b>Dilution</b>	<b>Volume</b>	<b>Catalog Number</b>
<b>Clone</b>	<b>MSVA-503M</b>	conc.	RUO	100-200	0,1 ml	3257-503M-01
Host	Mouse	conc.	RUO	100-200	0,5 ml	3257-503M-05
Isotype	IgG	conc.	RUO	100-200	1 ml	3257-503M-1

<b>MCM7</b>		<b>Format</b>	<b>Status</b>	<b>Dilution</b>	<b>Volume</b>	<b>Catalog Number</b>
<b>Clone</b>	<b>MSVA-507R</b>	conc.	RUO	100-200	0,1 ml	3675-507R-01
Host	Recombinant Rabbit	conc.	RUO	100-200	0,5 ml	3675-507R-05
Isotype	IgG	conc.	RUO	100-200	1 ml	3675-507R-1

<b>Melan A CR (Cross Reactive)</b>		<b>Format</b>	<b>Status</b>	<b>Dilution</b>	<b>Volume</b>	<b>Catalog Number</b>
<b>Clone</b>	<b>MSVA-901M+</b>	conc.	RUO	100-200	0,1 ml	2359-901M-01
Host	Recombinant Mouse	conc.	RUO	100-200	0,5 ml	2359-901M-05
Isotype	IgG	conc.	RUO	100-200	1 ml	2359-901M-1

<b>Melan A Specific</b>		<b>Format</b>	<b>Status</b>	<b>Dilution</b>	<b>Volume</b>	<b>Catalog Number</b>
<b>Clone</b>	<b>MSVA-900M</b>	conc.	RUO	100-200	0,1 ml	2352-900M-01
Host	Recombinant Mouse	conc.	RUO	100-200	0,5 ml	2352-900M-05
Isotype	IgG	conc.	RUO	100-200	1 ml	2352-900M-1

<b>Mesothelin</b>		<b>Format</b>	<b>Status</b>	<b>Dilution</b>	<b>Volume</b>	<b>Catalog Number</b>
<b>Clone</b>	<b>MSVA-235M</b>	conc.	RUO	100-200	0,1 ml	2198-235M-01
Host	Mouse	conc.	RUO	100-200	0,5 ml	2198-235M-05
Isotype	IgG	conc.	RUO	100-200	1 ml	2198-235M-1

<b>MPO/ Myeloperoxidase</b>		<b>Format</b>	<b>Status</b>	<b>Dilution</b>	<b>Volume</b>	<b>Catalog Number</b>
<b>Clone</b>	<b>MSVA-692M</b>	conc.	RUO	100-200	0,1 ml	4517-692M-01
Host	Mouse	conc.	RUO	100-200	0,5 ml	4517-692M-05
Isotype	IgG	conc.	RUO	100-200	1 ml	4517-692M-1

<b>MSH2</b>		<b>Format</b>	<b>Status</b>	<b>Dilution</b>	<b>Volume</b>	<b>Catalog Number</b>
<b>Clone</b>	<b>MSVA-902M</b>	conc.	RUO	100-200	0,1 ml	2697-902M-01
Host	Recombinant Mouse	conc.	RUO	100-200	0,5 ml	2697-902M-05
Isotype	IgG	conc.	RUO	100-200	1 ml	2697-902M-1

<b>MSH6</b>		<b>Format</b>	<b>Status</b>	<b>Dilution</b>	<b>Volume</b>	<b>Catalog Number</b>
<b>Clone</b>	<b>MSVA-906R</b>	conc.	RUO	75-150	0,1 ml	2889-906R-01
Host	Recombinant Rabbit	conc.	RUO	75-150	0,5 ml	2889-906R-05
Isotype	IgG	conc.	RUO	75-150	1 ml	2889-906R-1

<b>MUC1</b>		<b>Format</b>	<b>Status</b>	<b>Dilution</b>	<b>Volume</b>	<b>Catalog Number</b>
<b>Clone</b>	<b>MSVA-672R</b>	conc.	RUO	75-150	0,1 ml	2551-672R-01
Host	Recombinant Rabbit	conc.	RUO	75-150	0,5 ml	2551-672R-05
Isotype	IgG	conc.	RUO	75-150	1 ml	2551-672R-1

<b>MUC5AC</b>		<b>Format</b>	<b>Status</b>	<b>Dilution</b>	<b>Volume</b>	<b>Catalog Number</b>
<b>Clone</b>	<b>MSVA-109M</b>	conc.	RUO	100-200	0,1 ml	2113-109M-01
Host	Recombinant Mouse	conc.	RUO	100-200	0,5 ml	2113-109M-05
Isotype	IgG	conc.	RUO	100-200	1 ml	2113-109M-1

<b>MUC6</b>		<b>Format</b>	<b>Status</b>	<b>Dilution</b>	<b>Volume</b>	<b>Catalog Number</b>
<b>Clone</b>	<b>MSVA-806R</b>	conc.	RUO	100-200	0,1 ml	2709-806R-91
Host	Recombinant Rabbit	conc.	RUO	100-200	0,5 ml	2709-806R-05
Isotype	IgG	conc.	RUO	100-200	1 ml	2709-806R-1

<b>Myosin Heavy Chain 11</b>		<b>Format</b>	<b>Status</b>	<b>Dilution</b>	<b>Volume</b>	<b>Catalog Number</b>
<b>Clone</b>	<b>MSVA-375R</b>	conc.	RUO	100-200	0,1 ml	2450-375R-01
Host	Recombinant Rabbit	conc.	RUO	100-200	0,5 ml	2450-375R-05
Isotype	IgG	conc.	RUO	100-200	1 ml	2450-375R-1

<b>Napsin A</b>		<b>Format</b>	<b>Status</b>	<b>Dilution</b>	<b>Volume</b>	<b>Catalog Number</b>
<b>Clone</b>	<b>MSVA-555R</b>	conc.	RUO	100-200	0,1 ml	2138-555R-01
<b>Host</b>	Recombinant Rabbit	conc.	RUO	100-200	0,5 ml	2138-555R-05
<b>Isotype</b>	IgG	conc.	RUO	100-200	1 ml	2138-555R-1

<b>NSE gamma</b>		<b>Format</b>	<b>Status</b>	<b>Dilution</b>	<b>Volume</b>	<b>Catalog Number</b>
<b>Clone</b>	<b>MSVA-451M</b>	conc.	RUO	100-200	0,1 ml	2453-451M-01
<b>Host</b>	Mouse	conc.	RUO	100-200	0,5 ml	2453-451M-05
<b>Isotype</b>	IgG	conc.	RUO	100-200	1 ml	2453-451M-1

<b>Nucleolin</b>		<b>Format</b>	<b>Status</b>	<b>Dilution</b>	<b>Volume</b>	<b>Catalog Number</b>
<b>Clone</b>	<b>MSVA-623R</b>	conc.	RUO	100-200	0,1 ml	4108-623R-01
<b>Host</b>	Recombinant Rabbit	conc.	RUO	100-200	0,5 ml	4108-623R-05
<b>Isotype</b>	IgG	conc.	RUO	100-200	1 ml	4108-623R-1

<b>Occludin</b>		<b>Format</b>	<b>Status</b>	<b>Dilution</b>	<b>Volume</b>	<b>Catalog Number</b>
<b>Clone</b>	<b>MSVA-415M</b>	conc.	RUO	100-200	0,1 ml	4373-415M-01
<b>Host</b>	Mouse	conc.	RUO	100-200	0,5 ml	4373-415M-05
<b>Isotype</b>	IgG	conc.	RUO	100-200	1 ml	4373-415M-1

<b>p16</b>		<b>Format</b>	<b>Status</b>	<b>Dilution</b>	<b>Volume</b>	<b>Catalog Number</b>
<b>Clone</b>	<b>MSVA-016R</b>	conc.	RUO	100-200	0,1 ml	3626-016R-01
<b>Host</b>	Recombinant Rabbit	conc.	RUO	100-200	0,5 ml	3626-016R-05
<b>Isotype</b>	IgG	conc.	RUO	100-200	1 ml	3626-016R-1

<b>p53</b>		<b>Format</b>	<b>Status</b>	<b>Dilution</b>	<b>Volume</b>	<b>Catalog Number</b>
<b>Clone</b>	<b>MSVA-053R</b>	conc.	RUO	100-200	0,1 ml	5358-053R-01
<b>Host</b>	Recombinant Rabbit	conc.	RUO	100-200	0,5 ml	5358-053R-05
<b>Isotype</b>	IgG	conc.	RUO	100-200	1 ml	5358-053R-1

<b>p63</b>		<b>Format</b>	<b>Status</b>	<b>Dilution</b>	<b>Volume</b>	<b>Catalog Number</b>
<b>Clone</b>	<b>MSVA-063R</b>	conc.	RUO	100-200	0,1 ml	4235-063R-01
<b>Host</b>	Recombinant Rabbit	conc.	RUO	100-200	0,5 ml	4235-063R-05
<b>Isotype</b>	IgG	conc.	RUO	100-200	1 ml	4235-063R-1

<b>PAPP-A</b>		<b>Format</b>	<b>Status</b>	<b>Dilution</b>	<b>Volume</b>	<b>Catalog Number</b>
<b>Clone</b>	<b>MSVA-780M</b>	conc.	RUO	75-150	0,1 ml	3415-780M-01
<b>Host</b>	Mouse	conc.	RUO	75-150	0,5 ml	3415-780M-05
<b>Isotype</b>	IgG	conc.	RUO	75-150	1 ml	3415-780M-1

<b>PAX6</b>		<b>Format</b>	<b>Status</b>	<b>Dilution</b>	<b>Volume</b>	<b>Catalog Number</b>
<b>Clone</b>	<b>MSVA-706M</b>	conc.	RUO	100-200	0,1 ml	5703-706M-01
<b>Host</b>	Mouse	conc.	RUO	100-200	0,5 ml	5703-706M-05
<b>Isotype</b>	IgG	conc.	RUO	100-200	1 ml	5703-706M-1



<b>PD-L1</b>		<b>Format</b>	<b>Status</b>	<b>Dilution</b>	<b>Volume</b>	<b>Catalog Number</b>
<b>Clone</b>	<b>MSVA-711R</b>	conc.	RUO	100-200	0,1 ml	2083-711R-01
<b>Host</b>	Recombinant Rabbit	conc.	RUO	100-200	0,5 ml	2083-711R-05
<b>Isotype</b>	IgG	conc.	RUO	100-200	1 ml	2083-711R-1

<b>Periostin</b>		<b>Format</b>	<b>Status</b>	<b>Dilution</b>	<b>Volume</b>	<b>Catalog Number</b>
<b>Clone</b>	<b>MSVA-649M</b>	conc.	RUO	100-200	0,1 ml	4344-649M-01
<b>Host</b>	Mouse	conc.	RUO	100-200	0,5 ml	4344-649M-05
<b>Isotype</b>	IgG	conc.	RUO	100-200	1 ml	4344-649M-1

<b>PGP9.5</b>		<b>Format</b>	<b>Status</b>	<b>Dilution</b>	<b>Volume</b>	<b>Catalog Number</b>
<b>Clone</b>	<b>MSVA-905R</b>	conc.	RUO	100-200	0,1 ml	3424-905R-01
<b>Host</b>	Recombinant Rabbit	conc.	RUO	100-200	0,5 ml	3424-905R-05
<b>Isotype</b>	IgG	conc.	RUO	100-200	1 ml	3424-905R-1

<b>PLAP</b>		<b>Format</b>	<b>Status</b>	<b>Dilution</b>	<b>Volume</b>	<b>Catalog Number</b>
<b>Clone</b>	<b>MSVA-350R</b>	conc.	RUO	100-200	0,1 ml	2794-350R-01
<b>Host</b>	Recombinant Rabbit	conc.	RUO	100-200	0,5 ml	2794-350R-05
<b>Isotype</b>	IgG	conc.	RUO	100-200	1 ml	2794-350R-1

<b>PMEL17 / gp100</b>		<b>Format</b>	<b>Status</b>	<b>Dilution</b>	<b>Volume</b>	<b>Catalog Number</b>
<b>Clone</b>	<b>MSVA-617R</b>	conc.	RUO	100-200	0,1 ml	2347-617R-01
<b>Host</b>	Recombinant Rabbit	conc.	RUO	100-200	0,5 ml	2347-617R-05
<b>Isotype</b>	IgG	conc.	RUO	100-200	1 ml	2347-617R-1

<b>Progesterone Receptor</b>		<b>Format</b>	<b>Status</b>	<b>Dilution</b>	<b>Volume</b>	<b>Catalog Number</b>
<b>Clone</b>	<b>MSVA-570R</b>	conc.	RUO	50-100	0,1 ml	3332-570R-01
<b>Host</b>	Recombinant Rabbit	conc.	RUO	50-100	0,5 ml	3332-570R-05
<b>Isotype</b>	IgG	conc.	RUO	50-100	1 ml	3332-570R-1

<b>Prostein</b>		<b>Format</b>	<b>Status</b>	<b>Dilution</b>	<b>Volume</b>	<b>Catalog Number</b>
<b>Clone</b>	<b>MSVA-460R</b>	conc.	RUO	100-200	0,1 ml	5241-460R-01
<b>Host</b>	Recombinant Rabbit	conc.	RUO	100-200	0,5 ml	5241-460R-05
<b>Isotype</b>	IgG	conc.	RUO	100-200	1 ml	5241-460R-1

<b>PSA / Prostate Specific Antigen</b>		<b>Format</b>	<b>Status</b>	<b>Dilution</b>	<b>Volume</b>	<b>Catalog Number</b>
<b>Clone</b>	<b>MSVA-603R</b>	conc.	RUO	100-200	0,1 ml	5182-603R-01
<b>Host</b>	Recombinant Rabbit	conc.	RUO	100-200	0,5 ml	5182-603R-05
<b>Isotype</b>	IgG	conc.	RUO	100-200	1 ml	5182-603R-1

<b>PSAP / ACP3 / ACPP</b>		<b>Format</b>	<b>Status</b>	<b>Dilution</b>	<b>Volume</b>	<b>Catalog Number</b>
<b>Clone</b>	<b>MSVA-452M</b>	conc.	RUO	100-200	0,1 ml	2521-452M-01
<b>Host</b>	Recombinant Mouse	conc.	RUO	100-200	0,5 ml	2521-452M-05
<b>Isotype</b>	IgG	conc.	RUO	100-200	1 ml	2521-452M-1

<b>PTH / Parathyroid Hormone</b>		<b>Format</b>	<b>Status</b>	<b>Dilution</b>	<b>Volume</b>	<b>Catalog Number</b>
<b>Clone</b>	<b>MSVA-525R</b>	conc.	RUO	100-200	0,1 ml	2652-525R-01
Host	Recombinant Rabbit	conc.	RUO	100-200	0,5 ml	2652-525R-05
Isotype	IgG	conc.	RUO	100-200	1 ml	2652-525R-1

<b>S100A12</b>		<b>Format</b>	<b>Status</b>	<b>Dilution</b>	<b>Volume</b>	<b>Catalog Number</b>
<b>Clone</b>	<b>MSVA-812M</b>	conc.	RUO	100-200	0,1 ml	3780-812M-01
Host	Mouse	conc.	RUO	100-200	0,5 ml	3780-812M-05
Isotype	IgG	conc.	RUO	100-200	1 ml	3780-812M-1

<b>S100P</b>		<b>Format</b>	<b>Status</b>	<b>Dilution</b>	<b>Volume</b>	<b>Catalog Number</b>
<b>Clone</b>	<b>MSVA-480R</b>	conc.	RUO	100-200	0,1 ml	2558-480R-01
Host	Recombinant Rabbit	conc.	RUO	100-200	0,5 ml	2558-480R-05
Isotype	IgG	conc.	RUO	100-200	1 ml	2558-480R-1

<b>S100</b>		<b>Format</b>	<b>Status</b>	<b>Dilution</b>	<b>Volume</b>	<b>Catalog Number</b>
<b>Clone</b>	<b>MSVA-490R</b>	conc.	RUO	100-200	0,1 ml	2634-490R-01
Host	Recombinant Rabbit	conc.	RUO	100-200	0,5 ml	2634-490R-05
Isotype	IgG	conc.	RUO	100-200	1 ml	2634-490R-1

<b>SATB2</b>		<b>Format</b>	<b>Status</b>	<b>Dilution</b>	<b>Volume</b>	<b>Catalog Number</b>
<b>Clone</b>	<b>MSVA-702R</b>	conc.	RUO	100-200	0,1 ml	2850-702R-01
Host	Recombinant Rabbit	conc.	RUO	100-200	0,5 ml	2850-702R-05
Isotype	IgG	conc.	RUO	100-200	1 ml	2850-702R-1

<b>Somatostatin</b>		<b>Format</b>	<b>Status</b>	<b>Dilution</b>	<b>Volume</b>	<b>Catalog Number</b>
<b>Clone</b>	<b>MSVA-638R</b>	conc.	RUO	100-200	0,1 ml	4669-638R-01
Host	Recombinant Rabbit	conc.	RUO	100-200	0,5 ml	4669-638R-05
Isotype	IgG	conc.	RUO	100-200	1 ml	4669-638R-1

<b>SOX9</b>		<b>Format</b>	<b>Status</b>	<b>Dilution</b>	<b>Volume</b>	<b>Catalog Number</b>
<b>Clone</b>	<b>MSVA-709R</b>	conc.	RUO	100-200	0,1 ml	4272-709R-01
Host	Recombinant Rabbit	conc.	RUO	100-200	0,5 ml	4272-709R-05
Isotype	IgG	conc.	RUO	100-200	1 ml	4272-709R-1

<b>STAR</b>		<b>Format</b>	<b>Status</b>	<b>Dilution</b>	<b>Volume</b>	<b>Catalog Number</b>
<b>Clone</b>	<b>MSVA-740R</b>	conc.	RUO	75-150	0,1 ml	5396-740R-01
Host	Recombinant Rabbit	conc.	RUO	75-150	0,5 ml	5396-740R-05
Isotype	IgG	conc.	RUO	75-150	1 ml	5396-740R-1

<b>STING</b>		<b>Format</b>	<b>Status</b>	<b>Dilution</b>	<b>Volume</b>	<b>Catalog Number</b>
<b>Clone</b>	<b>MSVA-515M</b>	conc.	RUO	100-200	0,1 ml	5473-515M-01
Host	Mouse	conc.	RUO	100-200	0,5 ml	5473-515M-05
Isotype	IgG	conc.	RUO	100-200	1 ml	5473-515M-1

<b>Synaptophysin</b>		<b>Format</b>	<b>Status</b>	<b>Dilution</b>	<b>Volume</b>	<b>Catalog Number</b>
<b>Clone</b>	<b>MSVA-462R</b>	conc.	RUO	100-200	0,1 ml	2188-462R-01
Host	Recombinant Rabbit	conc.	RUO	100-200	0,5 ml	2188-462R-05
Isotype	IgG	conc.	RUO	100-200	1 ml	2188-462R-1

<b>TACSTD2 / Trop2</b>		<b>Format</b>	<b>Status</b>	<b>Dilution</b>	<b>Volume</b>	<b>Catalog Number</b>
<b>Clone</b>	<b>MSVA-733R</b>	conc.	RUO	100-200	0,1 ml	3648-733R-01
Host	Recombinant Rabbit	conc.	RUO	100-200	0,5 ml	3648-733R-05
Isotype	IgG	conc.	RUO	100-200	1 ml	3648-733R-1

<b>TdT</b>		<b>Format</b>	<b>Status</b>	<b>Dilution</b>	<b>Volume</b>	<b>Catalog Number</b>
<b>Clone</b>	<b>MSVA-453R</b>	conc.	RUO	75-150	0,1 ml	2904-453R-01
Host	Recombinant Rabbit	conc.	RUO	75-150	0,5 ml	2904-453R-05
Isotype	IgG	conc.	RUO	75-150	1 ml	2904-453R-1

<b>TFF-1</b>		<b>Format</b>	<b>Status</b>	<b>Dilution</b>	<b>Volume</b>	<b>Catalog Number</b>
<b>Clone</b>	<b>MSVA-482M</b>	conc.	RUO	100-200	0,1 ml	MSVA-482M-01
Host	Mouse	conc.	RUO	100-200	0,5 ml	MSVA-482M-05
Isotype	IgG	conc.	RUO	100-200	1 ml	MSVA-482M-1

<b>Thyroglobulin</b>		<b>Format</b>	<b>Status</b>	<b>Dilution</b>	<b>Volume</b>	<b>Catalog Number</b>
<b>Clone</b>	<b>MSVA-189R</b>	conc.	RUO	100-200	0,1 ml	2119-189R-01
Host	Recombinant Rabbit	conc.	RUO	100-200	0,5 ml	2119-189R-05
Isotype	IgG	conc.	RUO	100-200	1 ml	2119-189R-1

<b>TIM3</b>		<b>Format</b>	<b>Status</b>	<b>Dilution</b>	<b>Volume</b>	<b>Catalog Number</b>
<b>Clone</b>	<b>MSVA-366R</b>	conc.	RUO	100-200	0,1 ml	3484-366R-01
Host	Recombinant Rabbit	conc.	RUO	100-200	0,5 ml	3484-366R-05
Isotype	IgG	conc.	RUO	100-200	1 ml	3484-366R-1

<b>TOP2A / TOPO2A</b>		<b>Format</b>	<b>Status</b>	<b>Dilution</b>	<b>Volume</b>	<b>Catalog Number</b>
<b>Clone</b>	<b>MSVA-802R</b>	conc.	RUO	100-200	0,1 ml	3172-802R-01
Host	Recombinant Rabbit	conc.	RUO	100-200	0,5 ml	3172-802R-05
Isotype	IgG	conc.	RUO	100-200	1 ml	3172-802R-1

<b>TRIM29</b>		<b>Format</b>	<b>Status</b>	<b>Dilution</b>	<b>Volume</b>	<b>Catalog Number</b>
<b>Clone</b>	<b>MSVA-629M</b>	conc.	RUO	100-200	0,1 ml	4452-629M-01
Host	Mouse	conc.	RUO	100-200	0,5 ml	4452-629M-05
Isotype	IgG	conc.	RUO	100-200	1 ml	4452-629M-1

<b>TRPS1</b>		<b>Format</b>	<b>Status</b>	<b>Dilution</b>	<b>Volume</b>	<b>Catalog Number</b>
<b>Clone</b>	<b>MSVA-512R</b>	conc.	RUO	100-200	0,1 ml	5676-512R-01
Host	Recombinant Rabbit	conc.	RUO	100-200	0,5 ml	5676-512R-05
Isotype	IgG	conc.	RUO	100-200	1 ml	5676-512R-1

<b>TTF-1</b>		<b>Format</b>	<b>Status</b>	<b>Dilution</b>	<b>Volume</b>	<b>Catalog Number</b>
<b>Clone</b>	<b>MSVA-312R</b>	conc.	RUO	100-200	0,1 ml	5805-312R-01
<b>Host</b>	Recombinant Rabbit	conc.	RUO	100-200	0,5 ml	5805-312R-05
<b>Isotype</b>	IgG	conc.	RUO	100-200	1 ml	5805-312R-1

<b>Uroplakin 1A</b>		<b>Format</b>	<b>Status</b>	<b>Dilution</b>	<b>Volume</b>	<b>Catalog Number</b>
<b>Clone</b>	<b>MSVA-735M</b>	conc.	RUO	100-200	0,1 ml	4386-735M-01
<b>Host</b>	Mouse	conc.	RUO	100-200	0,5 ml	4386-735M-05
<b>Isotype</b>	IgG	conc.	RUO	100-200	1 ml	4386-735M-1

<b>Uroplakin 1B</b>		<b>Format</b>	<b>Status</b>	<b>Dilution</b>	<b>Volume</b>	<b>Catalog Number</b>
<b>Clone</b>	<b>MSVA-734M</b>	conc.	RUO	100-200	0,1 ml	3797-734M-01
<b>Host</b>	Mouse	conc.	RUO	100-200	0,5 ml	3797-734M-05
<b>Isotype</b>	IgG	conc.	RUO	100-200	1 ml	3797-734M-1

<b>Uroplakin 3B</b>		<b>Format</b>	<b>Status</b>	<b>Dilution</b>	<b>Volume</b>	<b>Catalog Number</b>
<b>Clone</b>	<b>MSVA-736M</b>	conc.	RUO	100-200	0,1 ml	4879-736M-01
<b>Host</b>	Mouse	conc.	RUO	100-200	0,5 ml	4879-736M-05
<b>Isotype</b>	IgG	conc.	RUO	100-200	1 ml	4879-736M-1

<b>Villin</b>		<b>Format</b>	<b>Status</b>	<b>Dilution</b>	<b>Volume</b>	<b>Catalog Number</b>
<b>Clone</b>	<b>MSVA-459R</b>	conc.	RUO	100-200	0,1 ml	2576-459R-01
<b>Host</b>	Recombinant Rabbit	conc.	RUO	100-200	0,5 ml	2576-459R-05
<b>Isotype</b>	IgG	conc.	RUO	100-200	1 ml	2576-459R-1

<b>Vimentin</b>		<b>Format</b>	<b>Status</b>	<b>Dilution</b>	<b>Volume</b>	<b>Catalog Number</b>
<b>Clone</b>	<b>MSVA-458R</b>	conc.	RUO	100-200	0,1 ml	2914-458R-01
<b>Host</b>	Recombinant Rabbit	conc.	RUO	100-200	0,5 ml	2914-458R-05
<b>Isotype</b>	IgG	conc.	RUO	100-200	1 ml	2914-458R-1

<b>vWF (von Willebrand Factor)</b>		<b>Format</b>	<b>Status</b>	<b>Dilution</b>	<b>Volume</b>	<b>Catalog Number</b>
<b>Clone</b>	<b>MSVA-521R</b>	conc.	RUO	50-100	0,1 ml	2760-521R-01
<b>Host</b>	Recombinant Rabbit	conc.	RUO	50-100	0,5 ml	2760-521R-05
<b>Isotype</b>	IgG	conc.	RUO	50-100	1 ml	2760-521R-1

<b>XRCC5/Ku-p80</b>		<b>Format</b>	<b>Status</b>	<b>Dilution</b>	<b>Volume</b>	<b>Catalog Number</b>
<b>Clone</b>	<b>MSVA-880M</b>	conc.	RUO	100-200	0,1 ml	5160-880M-01
<b>Host</b>	Mouse	conc.	RUO	100-200	0,5 ml	5160-880M-05
<b>Isotype</b>	IgG	conc.	RUO	100-200	1 ml	5160-880M-1

<b>ZAP-70</b>		<b>Format</b>	<b>Status</b>	<b>Dilution</b>	<b>Volume</b>	<b>Catalog Number</b>
<b>Clone</b>	<b>MSVA-870R</b>	conc.	RUO	100-200	0,1 ml	3513-870R-01
<b>Host</b>	Recombinant Rabbit	conc.	RUO	100-200	0,5 ml	3513-870R-05
<b>Isotype</b>	IgG	conc.	RUO	100-200	1 ml	3513-870R-1

MS Validated Antibodies GmbH

Bergstedter Chaussee 62a

22395 Hamburg

Tel: +49 (0) 40 89 72 55 81

E-Mail: [info@ms-validatedantibodies.com](mailto:info@ms-validatedantibodies.com)

Website: [ms-validatedantibodies.com](https://ms-validatedantibodies.com)



SCAN ME

