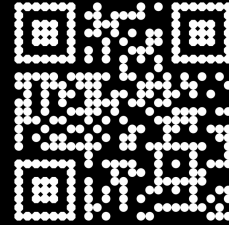
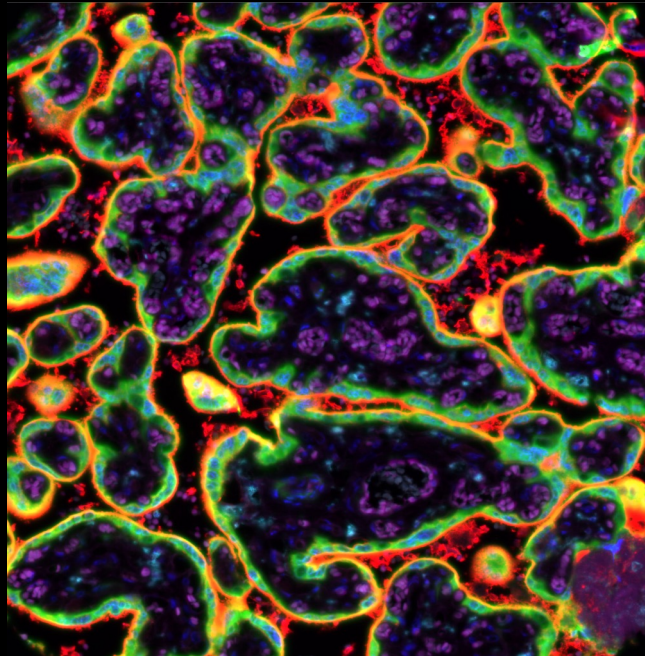


How it works: Sophisticated analysis frameworks utilize artificial intelligence for specific cell type identification defined by a combination of positive and negative antibody stainings as well as the spatial relationship between these cell types. Because of the high number of different "colors" on each stained slide and impaired morphologic cell type distinction in fluorescence imaging, visual quality control of individual antibodies becomes impossible.



MS Validated Antibodies GmbH

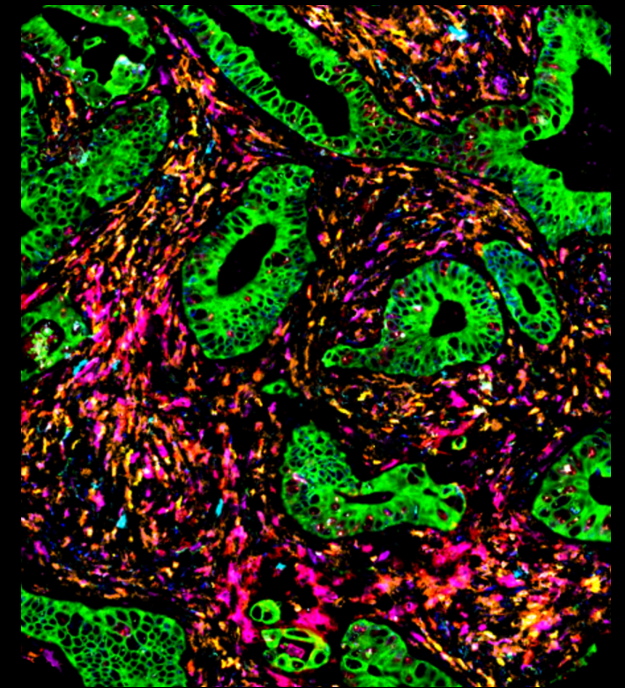
Bergstedter Chaussee 62a
22395 Hamburg
Germany

Tel: +49 (0) 40 89 72 55 81

E-Mail: info@ms-validatedantibodies.com

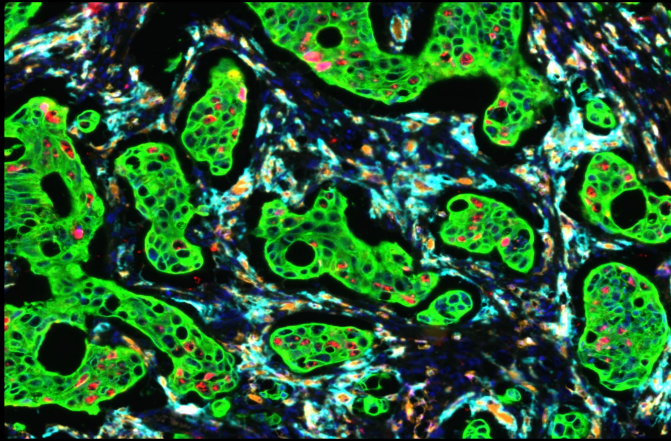
www.ms-validatedantibodies.com

Antibody quality is a
key issue for
multiplex fluorescence
immunohistochemistry

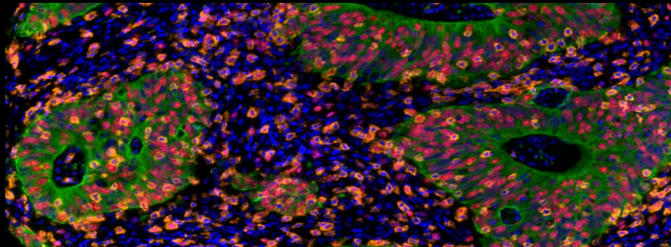


MS

Validated Antibodies



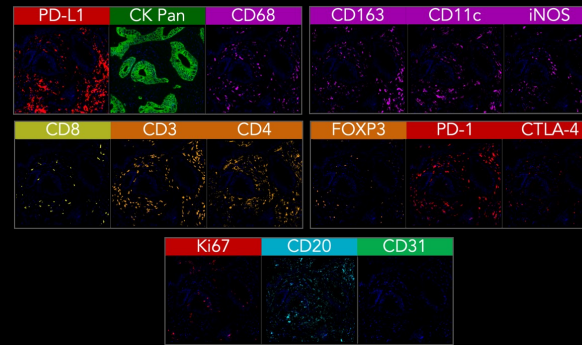
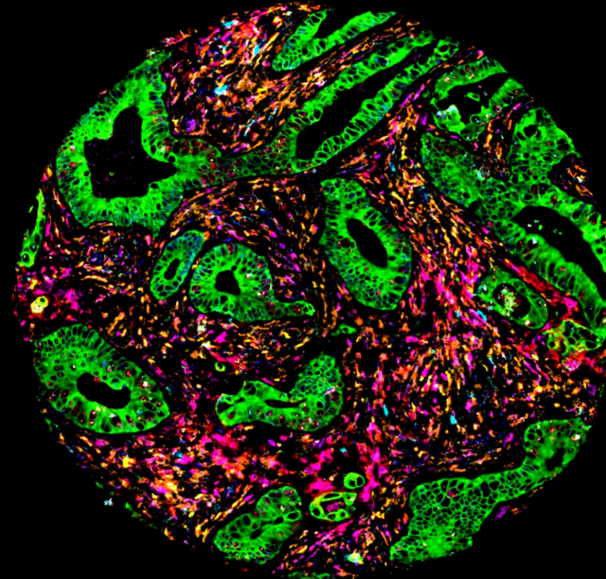
Multiplex fluorescence immunohistochemistry (mFIHC) allows the application of multiple antibodies to one tissue slide. Currently available equipment enables the simultaneous analysis of 4 (Versa 8, Leica), 6 (Vectra Polaris, AKOYA) and more than 50 antibodies (CODEX, AKOYA).



Non-specific or cross-reactive antibody staining of one or several antibodies used in a multicolor panel can severely contaminate the data and conclusions drawn from experiments.

Hence, the quality of the antibodies assembled in a mFIHC panel is pivotal for studies of the immune tumor microenvironment.

Antibody Validation in Brightfield IHC!



Panel with 15 antibodies – Image courtesy of Dr. Niclas C. Blessin

High-quality antibodies resulting in minimal non-specific binding (signal to noise ratio) and a documented lack of cross-reactivity are therefore pivotal for experimental success.



MS

Validated Antibodies

used in the shown mFIHC panel

CD163

MSVA-163M

0,1 ml Cat# 2335-163M-01
0,5 ml Cat# 2335-163M-05
1 ml Cat# 2335-163M-1

PD-L1

MSVA-711R

0,1 ml Cat# 2083-711R-01
0,5 ml Cat# 2083-711R-05
1 ml Cat# 2083-711R-1

CTLA-4

MSVA-152R

0,1 ml Cat# 3451-152R-01
0,5 ml Cat# 3451-152R-05
1 ml Cat# 3451-152R-1

CD3

MSVA-003R

0,1 ml Cat# 2465-003R-01
0,5 ml Cat# 2465-003R-05
1 ml Cat# 2465-003R-1

CD4

MSVA-004R

0,1 ml Cat# 2278-004R-01
0,5 ml Cat# 2278-004R-05
1 ml Cat# 2278-004R-1

CD8

MSVA-008R

0,1 ml Cat# 2474-008R-01
0,5 ml Cat# 2474-008R-05
1 ml Cat# 2474-008R-1

Ki67

MSVA-267M

0,1 ml Cat# 2082-267M-01
0,5 ml Cat# 2082-267M-05
1 ml Cat# 2082-267M-1

CK Pan

MSVA-000R

0,1 ml Cat# 2105-000R-01
0,5 ml Cat# 2105-000R-05
1 ml Cat# 2105-000R-1

Also available in BSA-
and Azide free