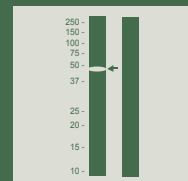


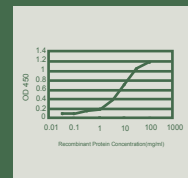
Fluorescence In Situ Hybridization (FISH)



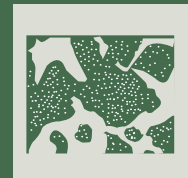
Western Blot



Sandwich ELISA



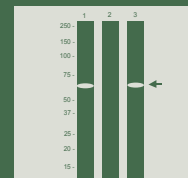
Immunohistochemistry



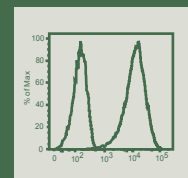
Immunofluorescence



Immunoprecipitation

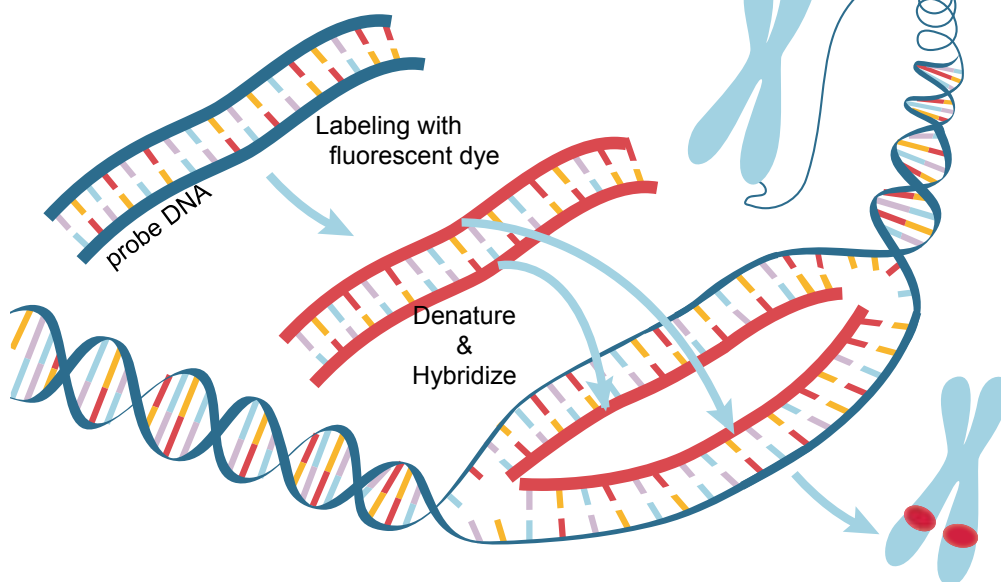


Flow Cytometry



Introduction	1
Gene FISH Probes	3
Split FISH Probes	13
Translocation FISH Probes	16
Chromosome FISH Probes	17
Subtelomere FISH Probes	20
Prenatal FISH Probes	24
Make to order	25
Accessory Kits & Reagents	29

Fluorescence In Situ Hybridization



Abnova Corporation

www.abnova.com

Email: sales@abnova.com

Address: 9F, No. 108, Jhouzih St., Neihu, Taipei 114, Taiwan

Tel: + 886 2 8751 1888 Fax: + 886 2 6602 1218

Fluorescence In Situ Hybridization (FISH)

FISH is a technique used to identify and localize the presence or absence of specific DNA sequences on cells and tissues. Abnova provides over 600 FISH probes for identification of gene amplification, split, translocation, subtelomere aberration, prenatal chromosomal aberration and chromosomal markers. It is fast, sensitive, and specific. We are expanding our FISH probe portfolio rapidly to meet your research needs. Custom-made probes are also available upon request.

Advantages

- Single, dual, and multiple colored probes for fast, sensitive, and specific detection
- Work on metaphase spread, paraffin embedded and frozen tissue
- High signal-to-noise ratio
- Low cross-reactivity

Preparation of FISH probe

1. Ready to Use

Gene FISH Probe (Cat # FGxxxx), Split FISH Probe (Cat # FSxxxx), Translocation FISH Probe (Cat # FTxxxx), Prenatal FISH Probe (Cat # FMxxxx), and Made to Order FISH Probe (Ca # FAxxxx) are ready to use, no need of any preparation.

2. Dilute Before Use

Chromosome FISH Probe (Cat # FCxxxx) and Subtelomere FISH Probe (Cat # FExxxx) are provided in 5x concentrated format, they should be either:

A. Diluted to 1x with FISH Hybridization Buffer (Cat # U0028 or U0029) before use,
OR

B. Mixed with same category of FISH Probes (up to 5 different probes) to use, for example:

Combine 2 different probes:

1 volume of probe 1 (2 uL) + 1 volume of probe 2 (2 uL)
+ 3 volume of FISH Hybridization Buffer (6 uL)

Combine 3 different probes:

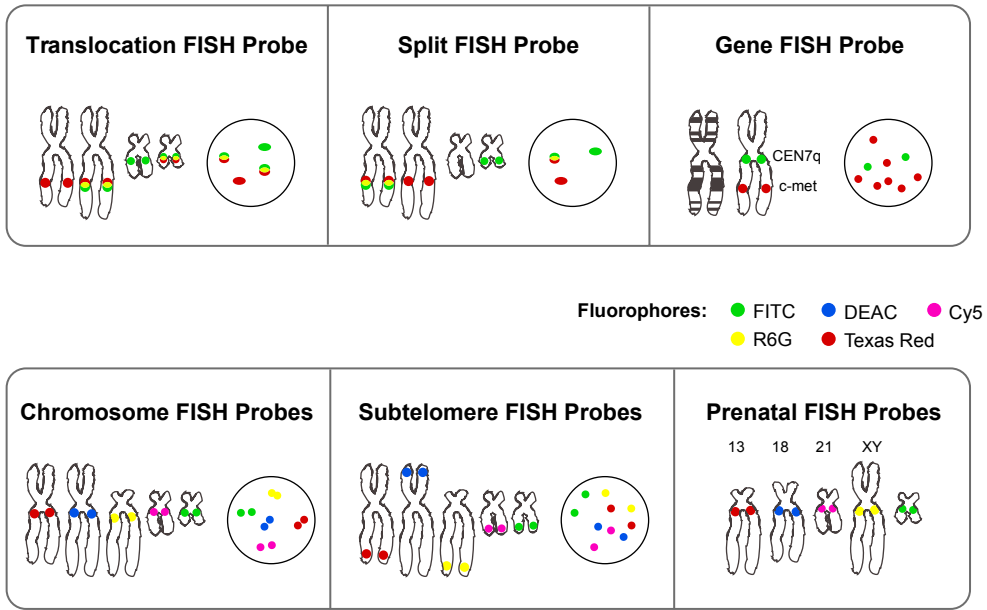
1 volume of probe 1 (2 uL) + 1 volume of probe 2 (2 uL)
+ 1 volume of probe 3 (2 uL)
+ 2 volume of FISH Hybridization Buffer (4 uL)

Recommended Filter Set

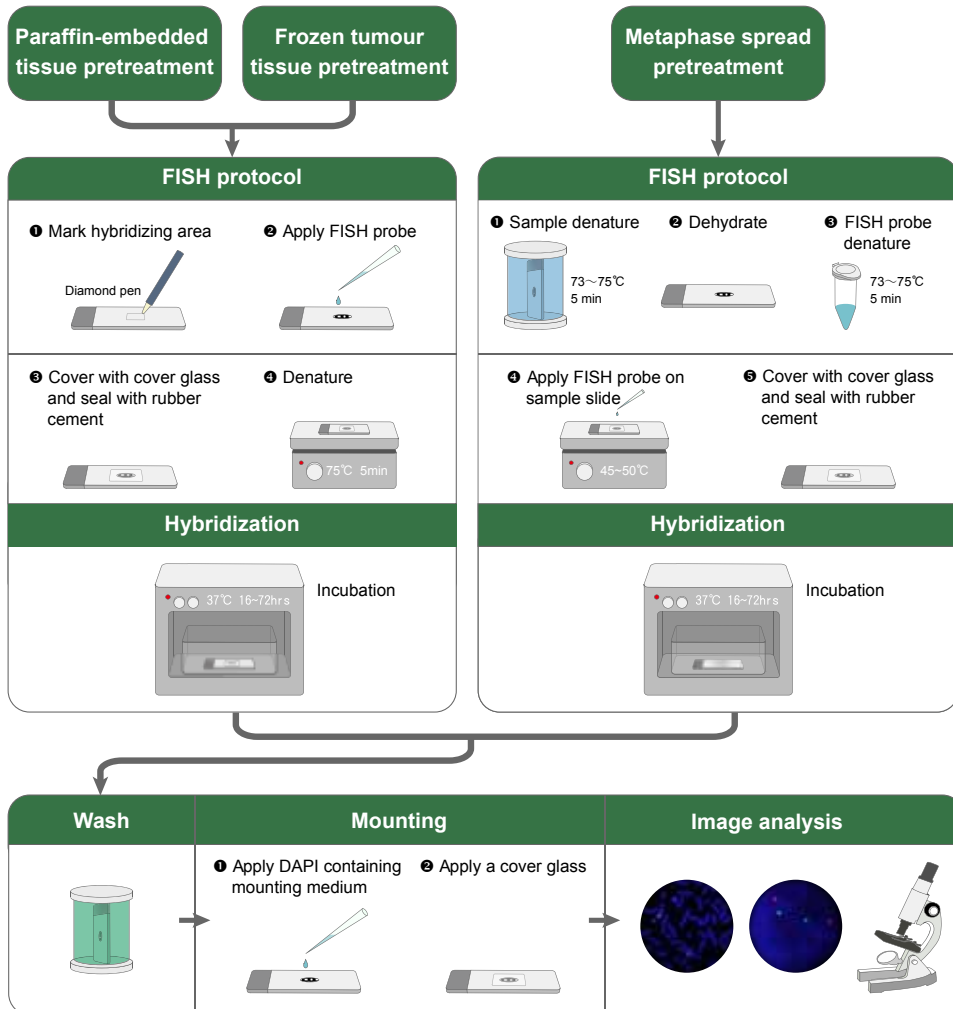
Fluorophore	Brand	Recommended filter set
Single fluorophore:		
FITC (EX. 426; EM. 480)	Semrock	SpGr-B
Texas Red (EX. 593; EM. 612)	Semrock	SpRed-B
DEAC (EX. 426; EM. 480)	Semrock	SpAqua-B
R6G (EX. 525; EM. 550)	Semrock	SpGold-B
Cy5 (EX. 650; EM. 668)	Semrock	CYS-4040B
Multiple fluorophore:		
FITC, Texas Red & DAPI	Semrock	DA/SpGr/SpRed-A

Note: EX. = excitation wavelength; EM. = emission wavelength

Product Lines

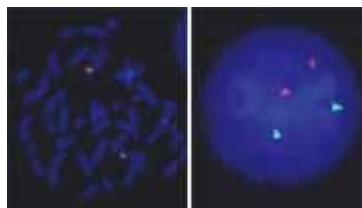


Procedure



Gene FISH Probes

Product Information



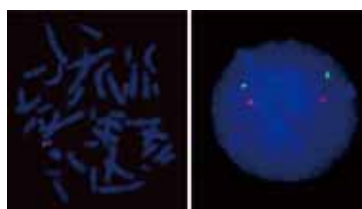
Cat.Num FG0034
Product Name AIB1/CEN20q FISH Probe

	Probe Name	Size	Fluorophore	Location
Probe 1	AIB1	Approximately 350kb	Texas Red	20q12
Probe 2	CEN20q	Approximately 680kb	FITC	20q11.22
Probe Gap	The gap between two probes is approximately 9,300 kb.			



Cat.Num FG0066
Product Name AKT1/CEN14q FISH Probe

	Probe Name	Size	Fluorophore	Location
Probe 1	AKT1	Approximately 320kb	Texas Red	14q32.33
Probe 2	CEN14q	Approximately 400kb	FITC	14q11.2
Probe Gap	The gap between two probes is approximately 71,800 kb.			



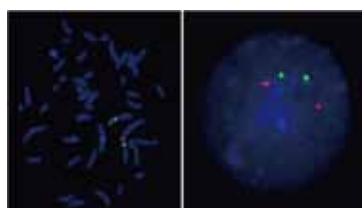
Cat.Num FG0014
Product Name AKT2/CEN19p FISH Probe

	Probe Name	Size	Fluorophore	Location
Probe 1	AKT2	Approximately 160kb	Texas Red	19q13.13
Probe 2	CEN19p	Approximately 570kb	FITC	19p13.11
Probe Gap	The gap between two probes is approximately 17,800 kb.			



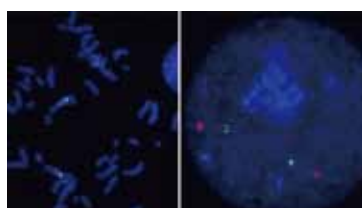
Cat.Num FG0067
Product Name AKT3/CEN1q FISH Probe

	Probe Name	Size	Fluorophore	Location
Probe 1	AKT3	Approximately 600kb	Texas Red	1q43-q44
Probe 2	CEN1q	Approximately 600kb	FITC	1q21.3
Probe Gap	The gap between two probes is approximately 88,900 kb.			



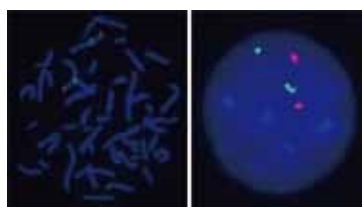
Cat.Num FG0036
Product Name ALK/CEN2p FISH Probe

	Probe Name	Size	Fluorophore	Location
Probe 1	ALK	Approximately 540kb	Texas Red	2p23
Probe 2	CEN2p	Approximately 670kb	FITC	2p11.2
Probe Gap	The gap between two probes is approximately 55,300 kb.			



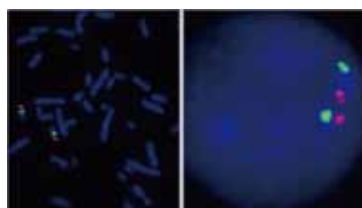
Cat.Num FG0077
Product Name AMY/CEN1q FISH Probe

	Probe Name	Size	Fluorophore	Location
Probe 1	AMY	Approximately 240kb	Texas Red	1p21.1
Probe 2	CEN1q	Approximately 600kb	FITC	1q21.3
Probe Gap	The gap between two probes is approximately 49,600 kb.			



Cat.Num FG0021
Product Name APC/CEN5q FISH Probe

	Probe Name	Size	Fluorophore	Location
Probe 1	APC	Approximately 420kb	Texas Red	5q22.2
Probe 2	CEN5q	Approximately 700kb	FITC	5q11.2
Probe Gap	The gap between two probes is approximately 59,200 kb.			

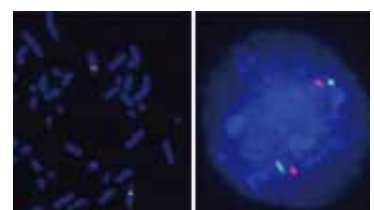
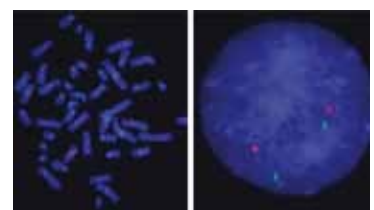
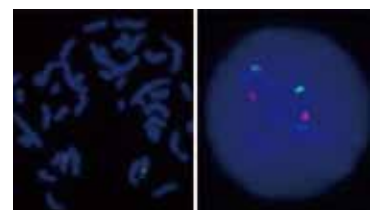
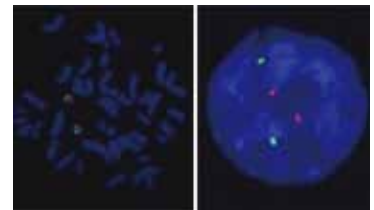
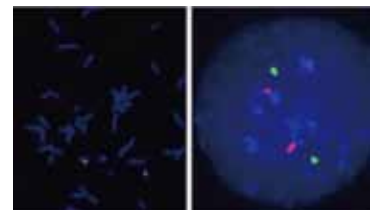
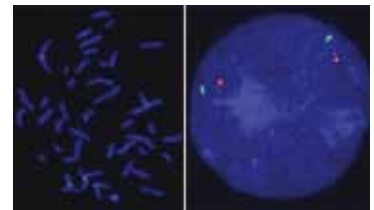
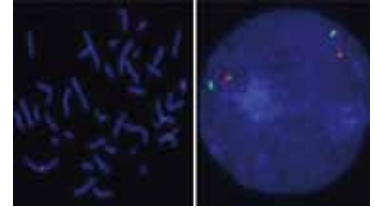
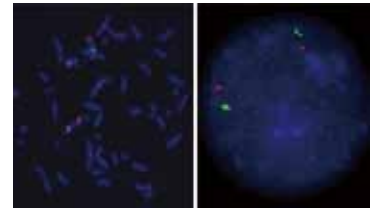


Cat.Num FG0068
Product Name APRT/CEN16q FISH Probe

	Probe Name	Size	Fluorophore	Location
Probe 1	APRT	Approximately 330kb	Texas Red	16q24.3
Probe 2	CEN16q	Approximately 700kb	FITC	16q12.1
Probe Gap	The gap between two probes is approximately 39,000 kb.			

Gene FISH Probes

Product Information				
Cat.Num	FG0055			
Product Name	ATOX1/CEN5q FISH Probe			
	Probe Name	Size	Fluorophore	Location
Probe 1	ATOX1	Approximately 250kb	Texas Red	5q32
Probe 2	CEN5q	Approximately 700kb	FITC	5q11.2
Probe Gap	The gap between two probes is approximately 98,300 kb.			
Cat.Num	FG0056			
Product Name	ATP7A/CENXp FISH Probe			
	Probe Name	Size	Fluorophore	Location
Probe 1	ATP7A	Approximately 350kb	Texas Red	Xq21.1
Probe 2	CENXp	Approximately 550kb	FITC	Xp11.22
Probe Gap	The gap between two probes is approximately 27,500 kb.			
Cat.Num	FG0057			
Product Name	ATP7B/CEN13q FISH Probe			
	Probe Name	Size	Fluorophore	Location
Probe 1	ATP7B	Approximately 350kb	Texas Red	13q14.3
Probe 2	CEN13q	Approximately 550kb	FITC	13q12.11
Probe Gap	The gap between two probes is approximately 24,100 kb.			
Cat.Num	FG0069			
Product Name	BRCA1/CEN17q FISH Probe			
	Probe Name	Size	Fluorophore	Location
Probe 1	BRCA1	Approximately 150kb	Texas Red	17q21.31
Probe 2	CEN17q	Approximately 540kb	FITC	17q11.2
Probe Gap	The gap between two probes is approximately 9,200 kb.			
Cat.Num	FG0030			
Product Name	CALR/CEN19q FISH Probe			
	Probe Name	Size	Fluorophore	Location
Probe 1	CALR	Approximately 260kb	Texas Red	19p13.1-13.2
Probe 2	CEN19q	Approximately 400kb	FITC	19q12
Probe Gap	The gap between two probes is approximately 17,100 kb.			
Cat.Num	FG0010			
Product Name	CCND1/CEN11p FISH Probe			
	Probe Name	Size	Fluorophore	Location
Probe 1	CCND1	Approximately 400kb	Texas Red	11q13
Probe 2	CEN11p	Approximately 630kb	FITC	11p11.12
Probe Gap	The gap between two probes is approximately 21,600 kb.			
Cat.Num	FG0052			
Product Name	CCND1/CEN11p FISH Probe			
	Probe Name	Size	Fluorophore	Location
Probe 1	CCND1	Approximately 270kb	Texas Red	11q13
Probe 2	CEN11p	Approximately 630kb	FITC	11p11.12
Probe Gap	The gap between two probes is approximately 21,600 kb.			
Cat.Num	FG0084			
Product Name	CCND3/CEN6p FISH Probe			
	Probe Name	Size	Fluorophore	Location
Probe 1	CCND3	Approximately 260kb	Texas Red	6p21.1
Probe 2	CEN6p	Approximately 660kb	FITC	6p12.1
Probe Gap	The gap between two probes is approximately 6,200 kb.			



Gene FISH Probes

Product Information

Cat.Num FG0013
Product Name CCNE1/CEN19p FISH Probe

	Probe Name	Size	Fluorophore	Location
Probe 1	CCNE1	Approximately 150kb	Texas Red	19q12
Probe 2	CEN19p	Approximately 570kb	FITC	19p13.11
Probe Gap	The gap between two probes is approximately 7,350 kb.			

Cat.Num FG0070
Product Name CDH1/CEN16q FISH Probe

	Probe Name	Size	Fluorophore	Location
Probe 1	CDH1	Approximately 390kb	Texas Red	16q22.1
Probe 2	CEN16q	Approximately 700kb	FITC	16q12.1
Probe Gap	The gap between two probes is approximately 19,100 kb.			

Cat.Num FG0033
Product Name CDK4/CEN12q FISH Probe

	Probe Name	Size	Fluorophore	Location
Probe 1	CDK4	Approximately 350kb	Texas Red	12q14.1
Probe 2	CEN12q	Approximately 580kb	FITC	12q12
Probe Gap	The gap between two probes is approximately 13,900 kb.			

Cat.Num FG0032
Product Name CHGA-ITPK1/CEN14q FISH Probe

	Probe Name	Size	Fluorophore	Location
Probe 1	CHGA-ITPK1	Approximately 270kb	Texas Red	14q32
Probe 2	CEN14q	Approximately 400kb	FITC	14q11.2
Probe Gap	The gap between two probes is approximately 59,900 kb.			

Cat.Num FG0071
Product Name CKS1B/CEN1p FISH Probe

	Probe Name	Size	Fluorophore	Location
Probe 1	CKS1B	Approximately 170kb	Texas Red	1q21
Probe 2	CEN1p	Approximately 780kb	FITC	1p13.3
Probe Gap	The gap between two probes is approximately 44,200 kb.			

Cat.Num FG0004
Product Name c-met/CEN7q FISH Probe

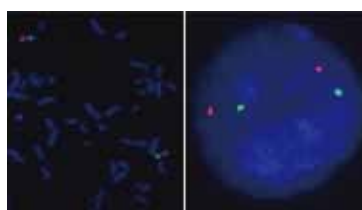
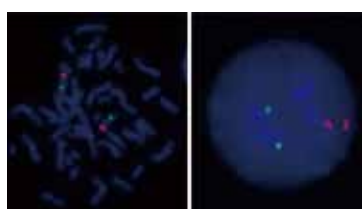
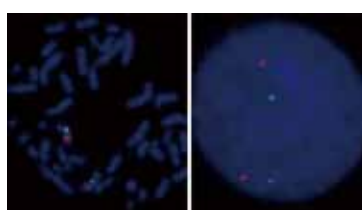
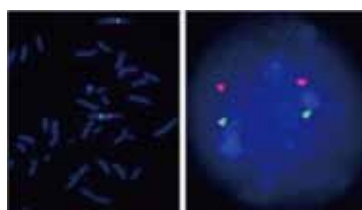
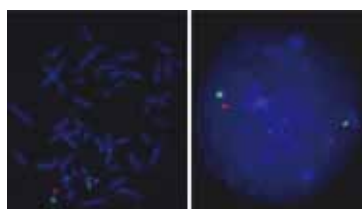
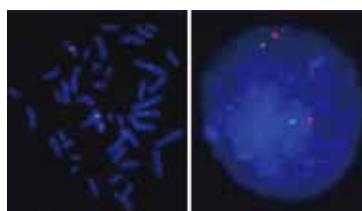
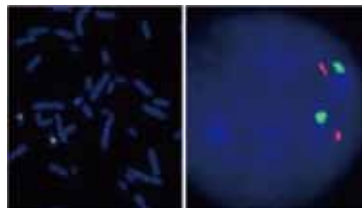
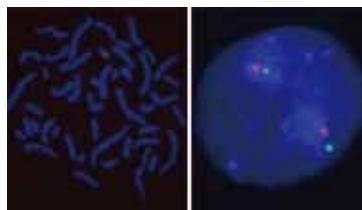
	Probe Name	Size	Fluorophore	Location
Probe 1	c-met	Approximately 270kb	Texas Red	7q31
Probe 2	CEN7q	Approximately 820kb	FITC	7q11.21
Probe Gap	The gap between two probes is approximately 51,200 kb.			

Cat.Num FG0009
Product Name c-myc/CEN8p FISH Probe

	Probe Name	Size	Fluorophore	Location
Probe 1	c-myc	Approximately 240kb	Texas Red	8q24.12-q24.13
Probe 2	CEN8p	Approximately 520kb	FITC	8p11.21
Probe Gap	The gap between two probes is approximately 88,100 kb.			

Cat.Num FG0065
Product Name c-myc/CEN8p FISH Probe

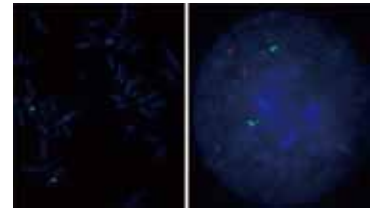
	Probe Name	Size	Fluorophore	Location
Probe 1	c-myc	Approximately 160kb	Texas Red	8q24.12-q24.13
Probe 2	CEN8p	Approximately 520kb	FITC	8p11.21
Probe Gap	The gap between two probes is approximately 88,100 kb.			



Gene FISH Probes

Product Information

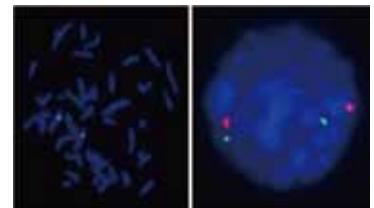
Cat.Num	FG0080			
Product Name	CSF1R/CEN5q FISH Probe			
	Probe Name	Size	Fluorophore	Location
Probe 1	CSF1R	Approximately 150kb	Texas Red	5q32
Probe 2	CEN5q	Approximately 700kb	FITC	5q11.2
Probe Gap	The gap between two probes is approximately 96,720 kb.			



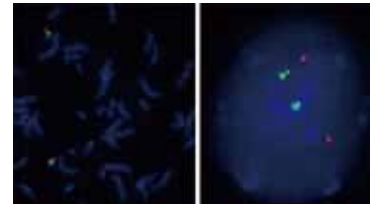
Cat.Num	FG0008			
Product Name	CX43/CEN6 FISH Probe			
	Probe Name	Size	Fluorophore	Location
Probe 1	CX43	Approximately 150kb	Texas Red	6q21-q23.2
Probe 2	CEN6p	Approximately 660kb	FITC	6p12.1
Probe Gap	The gap between two probes is approximately 66,600 kb.			



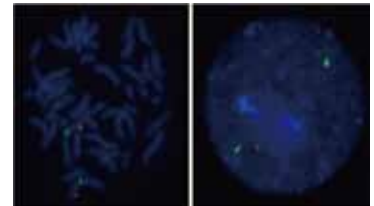
Cat.Num	FG0043			
Product Name	CXCL1/CEN4q FISH Probe			
	Probe Name	Size	Fluorophore	Location
Probe 1	CXCL1	Approximately 350kb	Texas Red	4q21
Probe 2	CEN4q	Approximately 650kb	FITC	4q12
Probe Gap	The gap between two probes is approximately 16,100 kb.			



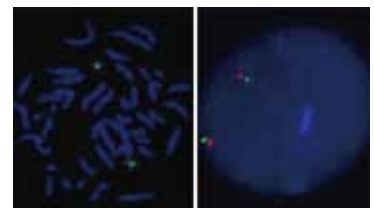
Cat.Num	FG0081			
Product Name	CYP2D6/CEN22q FISH Probe			
	Probe Name	Size	Fluorophore	Location
Probe 1	CYP2D6	Approximately 130kb	Texas Red	22q13.2
Probe 2	CEN22q	Approximately 620kb	FITC	22q11.22
Probe Gap	The gap between two probes is approximately 17,220 kb.			



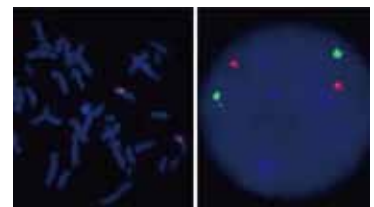
Cat.Num	FG0045			
Product Name	DTNB/CEN2p FISH Probe			
	Probe Name	Size	Fluorophore	Location
Probe 1	DTNB	Approximately 380kb	Texas Red	2p24
Probe 2	CEN2p	Approximately 670kb	FITC	2p11.2
Probe Gap	The gap between two probes is approximately 59,300 kb.			



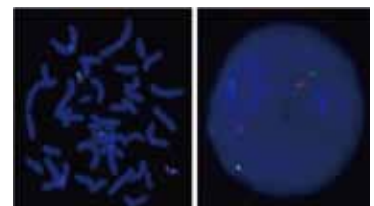
Cat.Num	FG0015			
Product Name	DYRK1A/CEN21q FISH Probe			
	Probe Name	Size	Fluorophore	Location
Probe 1	DYRK1A	Approximately 570kb	Texas Red	21q22.13
Probe 2	CEN21q	Approximately 520kb	FITC	21q11.2
Probe Gap	The gap between two probes is approximately 14,000 kb.			



Cat.Num	FG0005			
Product Name	EGFR/CEN7q FISH Probe			
	Probe Name	Size	Fluorophore	Location
Probe 1	EGFR	Approximately 300kb	Texas Red	7p12
Probe 2	CEN7q	Approximately 820kb	FITC	7q11.21
Probe Gap	The gap between two probes is approximately 8,900 kb.			



Cat.Num	FG0037			
Product Name	ERCC1/CEN19p FISH Probe			
	Probe Name	Size	Fluorophore	Location
Probe 1	ERCC1	Approximately 320kb	Texas Red	19q13.32
Probe 2	CEN19p	Approximately 570kb	FITC	19p13.11
Probe Gap	The gap between two probes is approximately 22,900 kb.			



Gene FISH Probes

Product Information

Cat.Num FG0001
Product Name FGF23/CEN12p FISH Probe

	Probe Name	Size	Fluorophore	Location
Probe 1	FGF23	Approximately 300kb	Texas Red	12p13
Probe 2	CEN12p	Approximately 530kb	FITC	12p11.22
Probe Gap	The gap between two probes is approximately 25,100 kb.			

Cat.Num FG0058
Product Name FGF3,FGF4/CEN11p FISH Probe

	Probe Name	Size	Fluorophore	Location
Probe 1	FGF3,FGF4	Approximately 320kb	Texas Red	11q13.3
Probe 2	CEN11p	Approximately 630kb	FITC	11p11.12
Probe Gap	The gap between two probes is approximately 21,900 kb.			

Cat.Num FG0049
Product Name FGFR1/CEN8q FISH Probe

	Probe Name	Size	Fluorophore	Location
Probe 1	FGFR1	Approximately 320kb	Texas Red	8p12
Probe 2	CEN8q	Approximately 520kb	FITC	8q11.21
Probe Gap	The gap between two probes is approximately 11,000 kb			

Cat.Num FG0018
Product Name FGFR2/CEN10p FISH Probe

	Probe Name	Size	Fluorophore	Location
Probe 1	FGFR2	Approximately 330kb	Texas Red	10q26
Probe 2	CEN10p	Approximately 640kb	FITC	10p11.22
Probe Gap	The gap between two probes is approximately 91,200 kb.			

Cat.Num FG0050
Product Name FGFR3/CEN4p FISH Probe

	Probe Name	Size	Fluorophore	Location
Probe 1	FGFR3	Approximately 400kb	Texas Red	4p16.3
Probe 2	CEN4q	Approximately 650kb	FITC	4q13
Probe Gap	The gap between two probes is approximately 55,800 kb			

Cat.Num FG0051
Product Name FGFR4/CEN5q FISH Probe

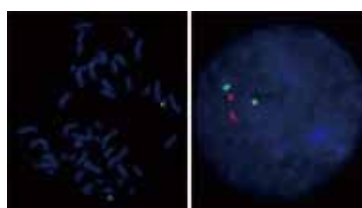
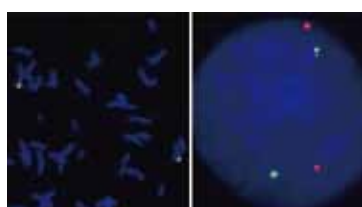
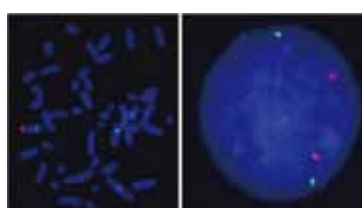
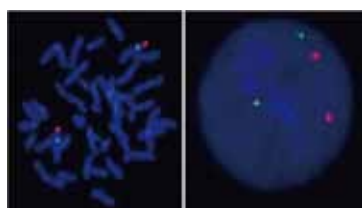
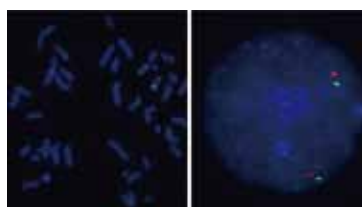
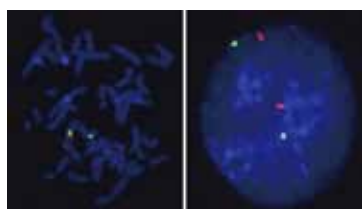
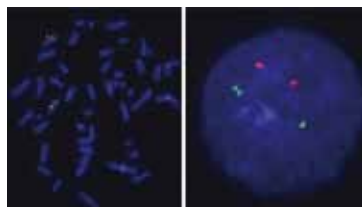
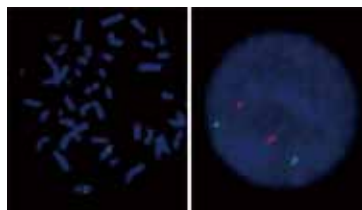
	Probe Name	Size	Fluorophore	Location
Probe 1	FGFR4	Approximately 450kb	Texas Red	5q35.1
Probe 2	CEN5q	Approximately 700kb	FITC	5q11.2
Probe Gap	The gap between two probes is approximately 123,600 kb			

Cat.Num FG0083
Product Name GINS3/CEN16q FISH Probe

	Probe Name	Size	Fluorophore	Location
Probe 1	GINS3	Approximately 370kb	Texas Red	16q21
Probe 2	CEN16q	Approximately 700kb	FITC	16q12.1
Probe Gap	The gap between two probes is approximately 8,660 kb.			

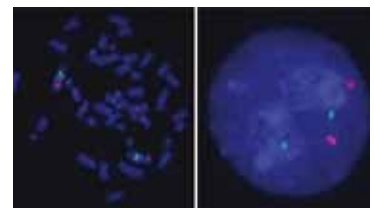
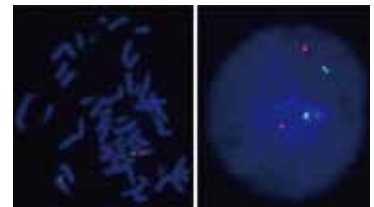
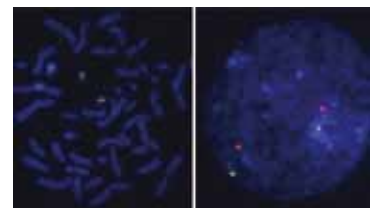
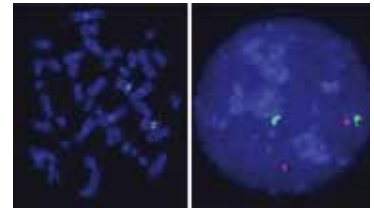
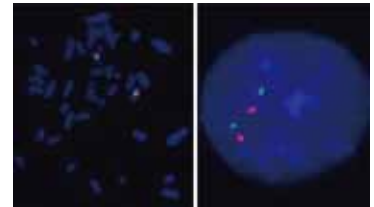
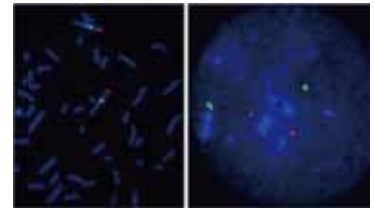
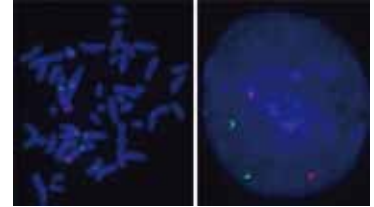
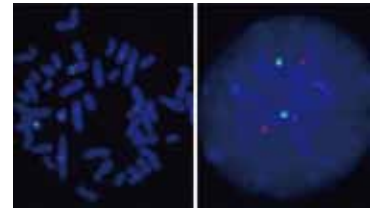
Cat.Num FG0006
Product Name HER2/CEN17q FISH Probe

	Probe Name	Size	Fluorophore	Location
Probe 1	HER2	Approximately 220kb	Texas Red	17q21.1
Probe 2	CEN17q	Approximately 540kb	FITC	17q11.2
Probe Gap	The gap between two probes is approximately 5,700 kb.			



Gene FISH Probes

Product Information				
Cat.Num	FG0023			
Product Name	HER3/CEN12p FISH Probe			
	Probe Name	Size	Fluorophore	Location
Probe 1	HER3	Approximately 320kb	Texas Red	12q13
Probe 2	CEN12p	Approximately 530kb	FITC	12p11.22
Probe Gap	The gap between two probes is approximately 36,000 kb.			
Cat.Num	FG0024			
Product Name	HER4/CEN2p FISH Probe			
	Probe Name	Size	Fluorophore	Location
Probe 1	HER4	Approximately 360kb	Texas Red	2q33-q34
Probe 2	CEN2p	Approximately 670kb	FITC	2p11.2
Probe Gap	The gap between two probes is approximately 126,300 kb.			
Cat.Num	FG0072			
Product Name	KLHDC7A/CEN1p FISH Probe			
	Probe Name	Size	Fluorophore	Location
Probe 1	KLHDC7A	Approximately 290kb	Texas Red	1p36.13
Probe 2	CEN1p	Approximately 780kb	FITC	1p13.3
Probe Gap	The gap between two probes is approximately 90,900 kb.			
Cat.Num	FG0017			
Product Name	KRAS/CEN12q FISH Probe			
	Probe Name	Size	Fluorophore	Location
Probe 1	KRAS	Approximately 250kb	Texas Red	12p12
Probe 2	CEN12q	Approximately 580kb	FITC	12q12
Probe Gap	The gap between two probes is approximately 17,900 kb.			
Cat.Num	FG0059			
Product Name	LAMP2/CENXp FISH Probe			
	Probe Name	Size	Fluorophore	Location
Probe 1	LAMP2	Approximately 250kb	Texas Red	Xq24
Probe 2	CENXp	Approximately 550kb	FITC	Xp11.22
Probe Gap	The gap between two probes is approximately 70,000 kb.			
Cat.Num	FG0060			
Product Name	LC3/CEN20p FISH Probe			
	Probe Name	Size	Fluorophore	Location
Probe 1	LC3	Approximately 400kb	Texas Red	20q11.22
Probe 2	CEN20p	Approximately 400kb	FITC	20p11.21
Probe Gap	The gap between two probes is approximately 10,400 kb.			
Cat.Num	FG0020			
Product Name	MDM2/CEN12p FISH Probe			
	Probe Name	Size	Fluorophore	Location
Probe 1	MDM2	Approximately 270kb	Texas Red	12q14.3-q15
Probe 2	CEN12p	Approximately 530kb	FITC	12p11.22
Probe Gap	The gap between two probes is approximately 38,700 kb.			
Cat.Num	FG0054			
Product Name	MDM4/CEN1q FISH Probe			
	Probe Name	Size	Fluorophore	Location
Probe 1	MDM4	Approximately 350kb	Texas Red	1q32
Probe 2	CEN1q	Approximately 600kb	FITC	1q21.3
Probe Gap	The gap between two probes is approximately 49,700 kb.			



Gene FISH Probes

Product Information

Cat.Num FG0040
Product Name MEN1/CEN11p FISH Probe

	Probe Name	Size	Fluorophore	Location
Probe 1	MEN1	Approximately 500kb	Texas Red	11q13
Probe 2	CEN11p	Approximately 630kb	FITC	11p11.12
Probe Gap	The gap between two probes is approximately 16,700 kb			

Cat.Num FG0016
Product Name MLL/CEN11p FISH Probe

	Probe Name	Size	Fluorophore	Location
Probe 1	MLL	Approximately 380kb	Texas Red	11q23.3
Probe 2	CEN11p	Approximately 630kb	FITC	11p11.12
Probe Gap	The gap between two probes is approximately 70,500 kb.			

Cat.Num FG0082
Product Name MODY1/CEN20q FISH Probe

	Probe Name	Size	Fluorophore	Location
Probe 1	MODY1	Approximately 480kb	Texas Red	20q13.12
Probe 2	CEN20q	Approximately 680kb	FITC	20q11.22
Probe Gap	The gap between two probes is approximately 6,120 kb.			

Cat.Num FG0048
Product Name MYCN/CEN2p FISH Probe

	Probe Name	Size	Fluorophore	Location
Probe 1	MYCN	Approximately 270kb	Texas Red	2p24.1
Probe 2	CEN2p	Approximately 670kb	FITC	2p11.2
Probe Gap	The gap between two probes is approximately 69,000 kb			

Cat.Num FG0079
Product Name NES/CEN1p FISH Probe

	Probe Name	Size	Fluorophore	Location
Probe 1	NES	Approximately 290kb	Texas Red	1p23.1
Probe 2	CEN1p	Approximately 780kb	FITC	1p13.3
Probe Gap	The gap between two probes is approximately 45,860 kb.			

Cat.Num FG0053
Product Name NF1/CEN17q FISH Probe

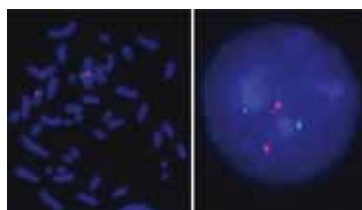
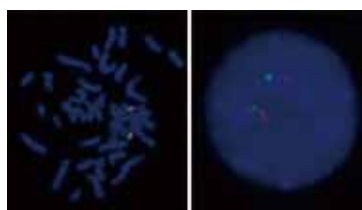
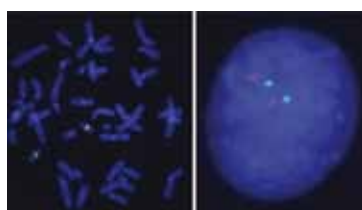
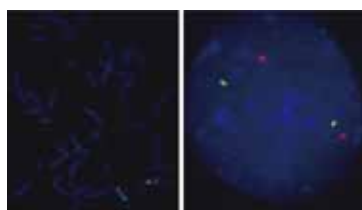
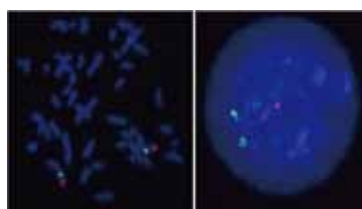
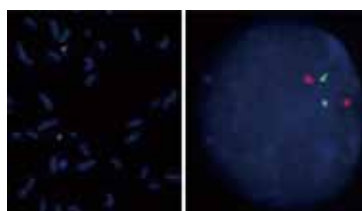
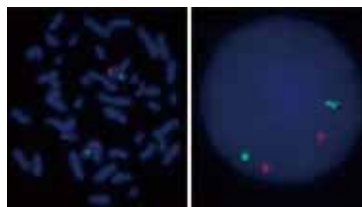
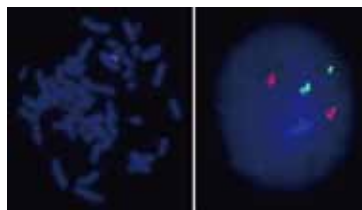
	Probe Name	Size	Fluorophore	Location
Probe 1	NF1	Approximately 260kb	Texas Red	17q11.2
Probe 2	CEN17q	Approximately 540kb	FITC	17q11.2
Probe Gap	The gap between two probes is approximately 2,740 kb.			

Cat.Num FG0003
Product Name NF2/CEN22q FISH Probe

	Probe Name	Size	Fluorophore	Location
Probe 1	NF2	Approximately 300kb	Texas Red	22q12.2
Probe 2	CEN22q	Approximately 620kb	FITC	22q11.22
Probe Gap	The gap between two probes is approximately 4,000 kb.			

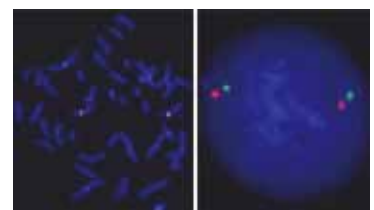
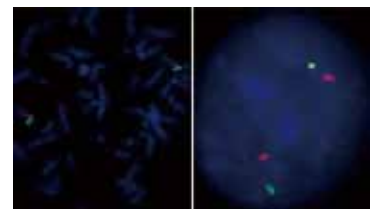
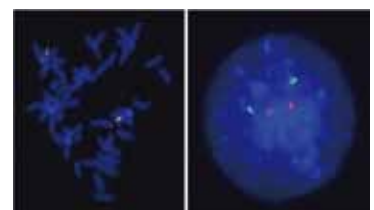
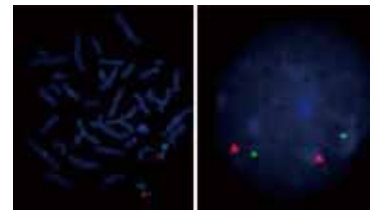
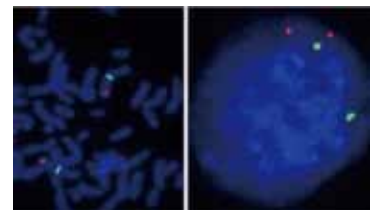
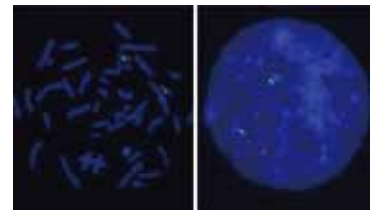
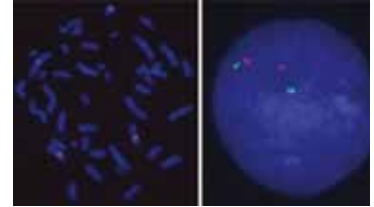
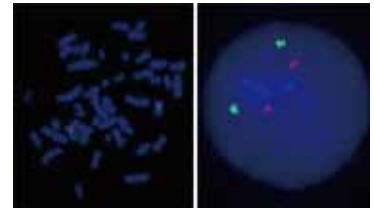
Cat.Num FG0061
Product Name p14/CEN11p FISH Probe

	Probe Name	Size	Fluorophore	Location
Probe 1	p14	Approximately 270kb	Texas Red	11q13.2
Probe 2	CEN11p	Approximately 630kb	FITC	11p11.12
Probe Gap	The gap between two probes is approximately 19,600 kb.			



Gene FISH Probes

Product Information				
Cat.Num	FG0002			
Product Name	p16/CEN9q FISH Probe			
	Probe Name	Size	Fluorophore	Location
Probe 1	p16	Approximately 110kb	Texas Red	9p21
Probe 2	CEN9q	Approximately 470kb	FITC	9q21
Probe Gap	The gap between two probes is approximately 49,380 kb.			
Cat.Num	FG0062			
Product Name	p21/CEN6p FISH Probe			
	Probe Name	Size	Fluorophore	Location
Probe 1	p21	Approximately 270kb	Texas Red	6p21.2
Probe 2	CEN6p	Approximately 660kb	FITC	6p12.1
Probe Gap	The gap between two probes is approximately 11,500 kb.			
Cat.Num	FG0011			
Product Name	p53/CEN17q FISH Probe			
	Probe Name	Size	Fluorophore	Location
Probe 1	p53	Approximately 190kb	Texas Red	17p13.1
Probe 2	CEN17q	Approximately 540kb	FITC	17q11.2
Probe Gap	The gap between two probes is approximately 24,700 kb.			
Cat.Num	FG0073			
Product Name	PIK3CA/CEN3q FISH Probe			
	Probe Name	Size	Fluorophore	Location
Probe 1	PIK3CA	Approximately 280kb	Texas Red	3q26.32
Probe 2	CEN3q	Approximately 500kb	FITC	3q12.1
Probe Gap	The gap between two probes is approximately 82,800 kb.			
Cat.Num	FG0019			
Product Name	PTEN/CEN10p FISH Probe			
	Probe Name	Size	Fluorophore	Location
Probe 1	PTEN	Approximately 470kb	Texas Red	10q23
Probe 2	CEN10p	Approximately 640kb	FITC	10p11.22
Probe Gap	The gap between two probes is approximately 57,500 kb.			
Cat.Num	FG0038			
Product Name	PTPRT/CEN20p FISH Probe			
	Probe Name	Size	Fluorophore	Location
Probe 1	PTPRT	Approximately 450kb	Texas Red	20q12-q13
Probe 2	CEN20q	Approximately 680kb	FITC	20q11.22
Probe Gap	The gap between two probes is approximately 4,200 kb			
Cat.Num	FG0078			
Product Name	RET/CEN10p FISH Probe			
	Probe Name	Size	Fluorophore	Location
Probe 1	RET	Approximately 200kb	Texas Red	10q11.2
Probe 2	CEN10p	Approximately 640kb	FITC	10p11.22
Probe Gap	The gap between two probes is approximately 11,600 kb.			
Cat.Num	FG0031			
Product Name	RUNX2/CEN6p FISH Probe			
	Probe Name	Size	Fluorophore	Location
Probe 1	RUNX2	Approximately 230kb	Texas Red	6p21
Probe 2	CEN6p	Approximately 660kb	FITC	6p12.1
Probe Gap	The gap between two probes is approximately 2,800 kb.			



Gene FISH Probes

Product Information

Cat.Num FG0039
Product Name SDHB/CEN1p FISH Probe

	Probe Name	Size	Fluorophore	Location
Probe 1	SDHB	Approximately 400kb	Texas Red	1p36.13
Probe 2	CEN1p	Approximately 780kb	FITC	1p13.3
Probe Gap	The gap between two probes is approximately 92,300 kb			

Cat.Num FG0046
Product Name SERPINB6/CEN6p FISH Probe

	Probe Name	Size	Fluorophore	Location
Probe 1	SERPINB6	Approximately 400kb	Texas Red	6p25
Probe 2	CEN6p	Approximately 660kb	FITC	6p12.1
Probe Gap	The gap between two probes is approximately 45,000 kb			

Cat.Num FG0063
Product Name SLC31A/CEN9q FISH Probe

	Probe Name	Size	Fluorophore	Location
Probe 1	SLC31A	Approximately 300kb	Texas Red	9q32
Probe 2	CEN9q	Approximately 470kb	FITC	9q21
Probe Gap	The gap between two probes is approximately 44,000 kb.			

Cat.Num FG0074
Product Name SOX2/CEN3q FISH Probe

	Probe Name	Size	Fluorophore	Location
Probe 1	SOX2	Approximately 380kb	Texas Red	3q26.3-q27
Probe 2	CEN3q	Approximately 500kb	FITC	3q12.1
Probe Gap	The gap between two probes is approximately 85,400 kb.			

Cat.Num FG0064
Product Name SQSTM1/CEN5q FISH Probe

	Probe Name	Size	Fluorophore	Location
Probe 1	SQSTM1	Approximately 350kb	Texas Red	5q35.3
Probe 2	CEN5q	Approximately 700kb	FITC	5q11.2
Probe Gap	The gap between two probes is approximately 126,300 kb.			

Cat.Num FG0047
Product Name SYT9/CEN11p FISH Probe

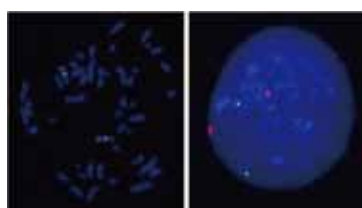
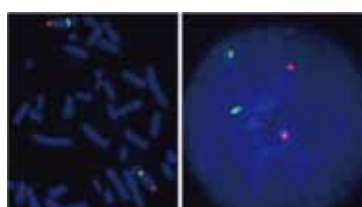
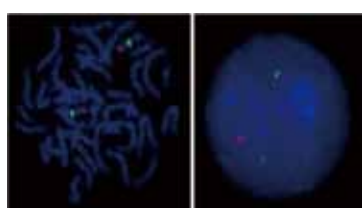
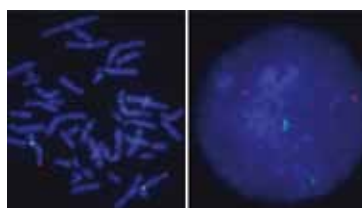
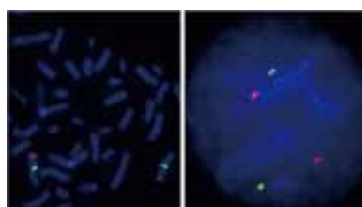
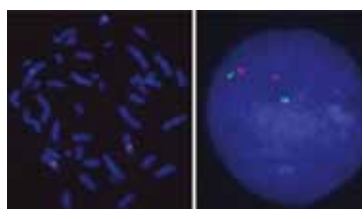
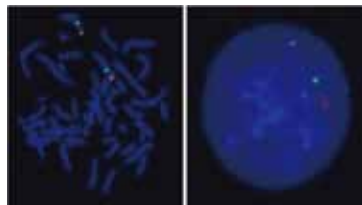
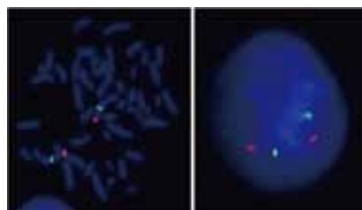
	Probe Name	Size	Fluorophore	Location
Probe 1	SYT9	Approximately 400kb	Texas Red	11p15.4
Probe 2	CEN11p	Approximately 630kb	FITC	11p11.12
Probe Gap	The gap between two probes is approximately 39,400 kb			

Cat.Num FG0075
Product Name T/CEN6p FISH Probe

	Probe Name	Size	Fluorophore	Location
Probe 1	T	Approximately 180kb	Texas Red	6q27
Probe 2	CEN6p	Approximately 660kb	FITC	6p12.1
Probe Gap	The gap between two probes is approximately 111,400 kb.			

Cat.Num FG0042
Product Name TNIK/CEN3q FISH Probe

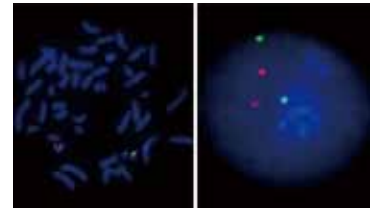
	Probe Name	Size	Fluorophore	Location
Probe 1	TNIK	Approximately 490kb	Texas Red	3q26.2-p26.31
Probe 2	CEN3q	Approximately 500kb	FITC	3q12.1
Probe Gap	The gap between two probes is approximately 74,800 kb			



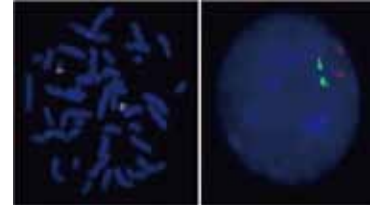
Gene FISH Probes

Product Information

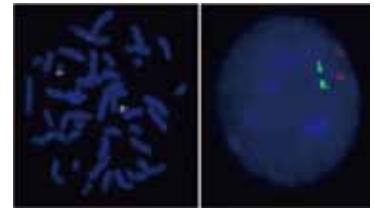
Cat.Num	FG0007			
Product Name	TOP2A/CEN17q FISH Probe			
	Probe Name	Size	Fluorophore	Location
Probe 1	TOP2A	Approximately 180kb	Texas Red	17q21
Probe 2	CEN17q	Approximately 540kb	FITC	17q11.2
Probe Gap	The gap between two probes is approximately 6,400 kb.			



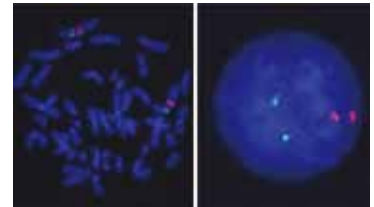
Cat.Num	FG0044			
Product Name	TPM4/CEN19q FISH Probe			
	Probe Name	Size	Fluorophore	Location
Probe 1	TPM4	Approximately 380kb	Texas Red	19p13.1
Probe 2	CEN19q	Approximately 400kb	FITC	19q12
Probe Gap	The gap between two probes is approximately 13,800 kb			



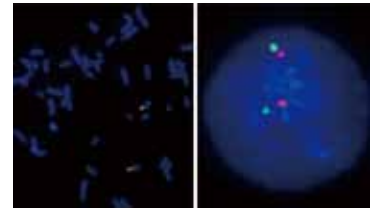
Cat.Num	FG0041			
Product Name	TPX2/CEN20p FISH Probe			
	Probe Name	Size	Fluorophore	Location
Probe 1	TPX2	Approximately 150kb	Texas Red	20q11.2
Probe 2	CEN20p	Approximately 400kb	FITC	20p11.21
Probe Gap	The gap between two probes is approximately 7,900 kb			



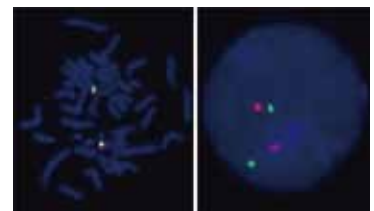
Cat.Num	FG0026			
Product Name	TRF1/CEN8p FISH Probe			
	Probe Name	Size	Fluorophore	Location
Probe 1	TRF1	Approximately 290kb	Texas Red	8q13
Probe 2	CEN8p	Approximately 520kb	FITC	8p11.21
Probe Gap	The gap between two probes is approximately 33,200 kb.			



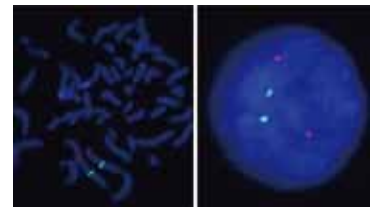
Cat.Num	FG0012			
Product Name	TYMS/CEN18q FISH Probe			
	Probe Name	Size	Fluorophore	Location
Probe 1	TYMS	Approximately 180kb	Texas Red	18p11.32
Probe 2	CEN18q	Approximately 660kb	FITC	18q11.2
Probe Gap	The gap between two probes is approximately 29,300 kb.			



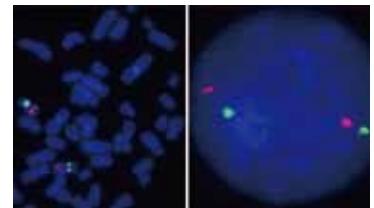
Cat.Num	FG0025			
Product Name	UBE3A/CEN15q FISH Probe			
	Probe Name	Size	Fluorophore	Location
Probe 1	UBE3A	Approximately 370kb	Texas Red	15q11.2
Probe 2	CEN15q	Approximately 680kb	FITC	15q11.2
Probe Gap	The gap between two probes is approximately 5,700 kb.			



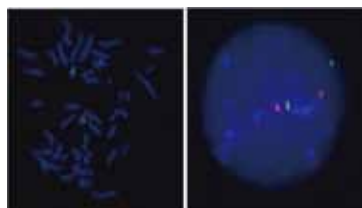
Cat.Num	FG0029			
Product Name	VHL/CEN3q FISH Probe			
	Probe Name	Size	Fluorophore	Location
Probe 1	VHL	Approximately 170kb	Texas Red	3p26-p25
Probe 2	CEN3q	Approximately 500kb	FITC	3q12.1
Probe Gap	The gap between two probes is approximately 85,100 kb.			



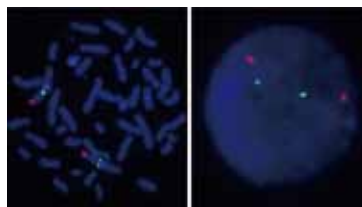
Cat.Num	FG0076			
Product Name	YAP1/CEN11p FISH Probe			
	Probe Name	Size	Fluorophore	Location
Probe 1	YAP1	Approximately 190kb	Texas Red	11q13
Probe 2	CEN11p	Approximately 630kb	FITC	11p11.12
Probe Gap	The gap between two probes is approximately 54,300 kb.			



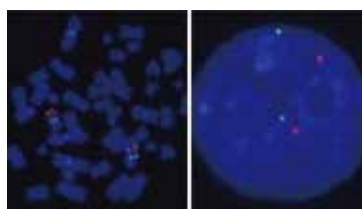
Gene FISH Probes



Product Information				
Cat.Num	FG0035			
Product Name	YES1/CEN18q FISH Probe			
	Probe Name	Size	Fluorophore	Location
Probe 1	YES1	Approximately 150kb	Texas Red	18p11.32
Probe 2	CEN18q	Approximately 660kb	FITC	18q11.2
Probe Gap	The gap between two probes is approximately 29,200 kb			

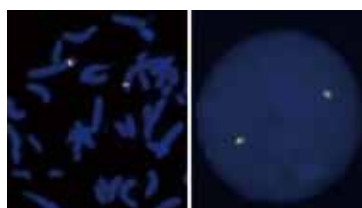


Cat.Num	FG0027			
Product Name	1p36.33/CEN1p FISH Probe			
	Probe Name	Size	Fluorophore	Location
Probe 1	1p36.33	Approximately 600kb	Texas Red	1p36.33
Probe 2	CEN1p	Approximately 780kb	FITC	1p13.3
Probe Gap	The gap between two probes is approximately 107,700 kb.			

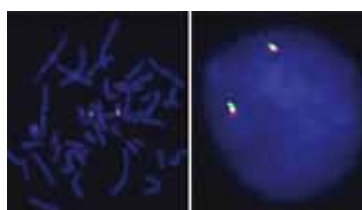


Cat.Num	FG0028			
Product Name	9q34/CEN9q FISH Probe			
	Probe Name	Size	Fluorophore	Location
Probe 1	9q34	Approximately 330kb	Texas Red	9q34
Probe 2	CEN9q	Approximately 470kb	FITC	9q21
Probe Gap	The gap between two probes is approximately 61,400 kb.			

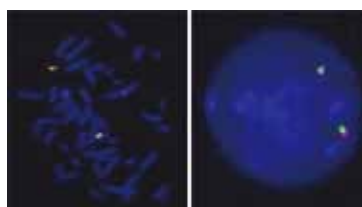
Split FISH Probes



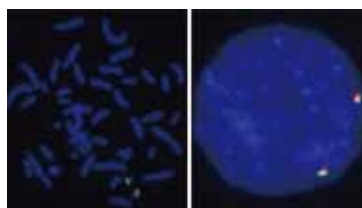
Product Information				
Cat.Num	FS0001			
Product Name	ALK Split FISH Probe			
	Probe Name	Size	Fluorophore	Location
Probe 1	ALK(FITC)	Approximately 770kb	FITC	2p23
Probe 2	ALK(Texas Red)	Approximately 640kb	Texas Red	2p23
Probe Gap	The gap between two probes is approximately 0 kb.			



Cat.Num	FS0014			
Product Name	CHOP Split FISH Probe			
	Probe Name	Size	Fluorophore	Location
Probe 1	CHOP(Texas Red)	Approximately 300kb	Texas Red	12q13.3
Probe 2	CHOP(FITC)	Approximately 430kb	FITC	12q13.3
Probe Gap	The gap between two probes is approximately 20 kb.			



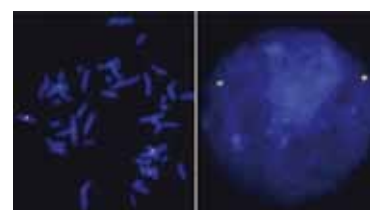
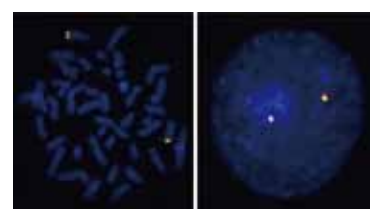
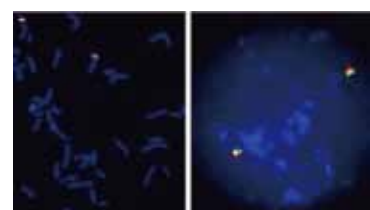
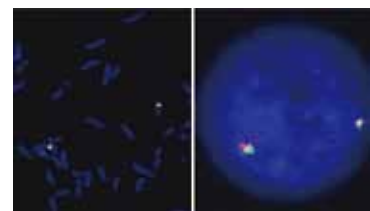
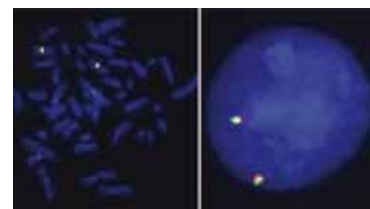
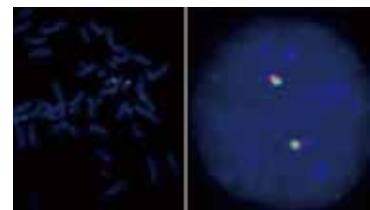
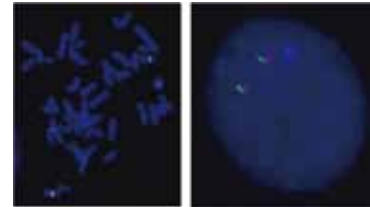
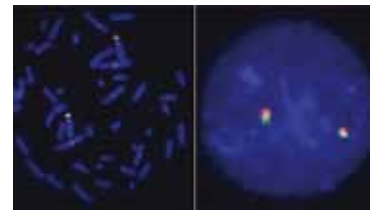
Cat.Num	FS0008			
Product Name	ERG Split FISH Probe			
	Probe Name	Size	Fluorophore	Location
Probe 1	ERG(Texas Red)	Approximately 330kb	Texas Red	21q22.2-22.3
Probe 2	ERG(FITC)	Approximately 540kb	FITC	21q22.2-22.3
Probe Gap	The gap between two probes is approximately 70 kb.			



Cat.Num	FS0003			
Product Name	EWSR1 Split FISH Probe			
	Probe Name	Size	Fluorophore	Location
Probe 1	EWSR1(Texas Red)	Approximately 590kb	Texas Red	22q12
Probe 2	EWSR1(FITC)	Approximately 610kb	FITC	22q12
Probe Gap	The gap between two probes is approximately 40 kb.			

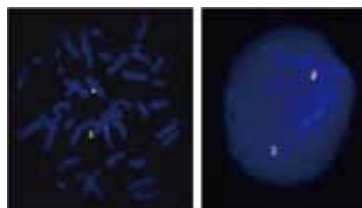
Split FISH Probes

Product Information				
Cat.Num	FS0011			
Product Name	FGFR3 Split FISH Probe			
	Probe Name	Size	Fluorophore	Location
Probe 1	FGFR3(Texas Red)	Approximately 700kb	Texas Red	4p16.3
Probe 2	FGFR3(FITC)	Approximately 500kb	FITC	4p16.3
Probe Gap	The gap between two probes is approximately 30 kb.			
Cat.Num	FS0010			
Product Name	FKHR Split FISH Probe			
	Probe Name	Size	Fluorophore	Location
Probe 1	FKHR(FITC)	Approximately 600kb	FITC	13q14.1
Probe 2	FKHR(Texas Red)	Approximately 510kb	Texas Red	13q14.1
Probe Gap	The gap between two probes is approximately 90 kb			
Cat.Num	FS0020			
Product Name	FUS Split FISH Probe			
	Probe Name	Size	Fluorophore	Location
Probe 1	FUS(Texas Red)	Approximately 620kb	Texas Red	16p11.2
Probe 2	FUS(FITC)	Approximately 410kb	FITC	16p11.2
Cat.Num	FS0012			
Product Name	HEY1 Split FISH Probe			
	Probe Name	Size	Fluorophore	Location
Probe 1	HEY1(Texas Red)	Approximately 600kb	Texas Red	8q21.13
Probe 2	HEY1(FITC)	Approximately 650kb	FITC	8q21.13
Probe Gap	The length of overlap between two probes is approximately 80 kb.			
Cat.Num	FS0018			
Product Name	KIF5B Split FISH Probe			
	Probe Name	Size	Fluorophore	Location
Probe 1	KIF5B(Texas Red)	Approximately 620kb	Texas Red	10p11.2
Probe 2	KIF5B(FITC)	Approximately 750kb	FITC	10p11.2
Cat.Num	FS0016			
Product Name	MYB Split FISH Probe			
	Probe Name	Size	Fluorophore	Location
Probe 1	MYB(Texas Red)	Approximately 500kb	Texas Red	6q22-23
Probe 2	MYB(FITC)	Approximately 780kb	FITC	6q22-23
Probe Gap	The length of overlap between two probes is approximately 20 kb.			
Cat.Num	FS0006			
Product Name	MYC Split FISH Probe			
	Probe Name	Size	Fluorophore	Location
Probe 1	MYC(FITC)	Approximately 400kb	FITC	8q24.21
Probe 2	MYC(Texas Red)	Approximately 340kb	Texas Red	8q24.21
Probe Gap	The gap between two probes is approximately 0 kb.			
Cat.Num	FS0013			
Product Name	NCOA2 Split FISH Probe			
	Probe Name	Size	Fluorophore	Location
Probe 1	NCOA2(Texas Red)	Approximately 600kb	Texas Red	8q13.3
Probe 2	NCOA2(FITC)	Approximately 650kb	FITC	8q13.3
Probe Gap	The gap between two probes is approximately 20 kb.			

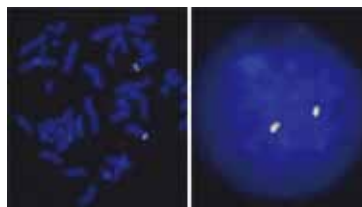


Split FISH Probes

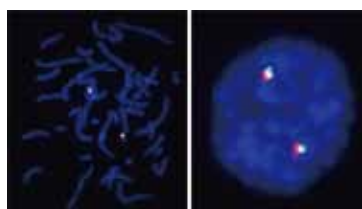
Product Information



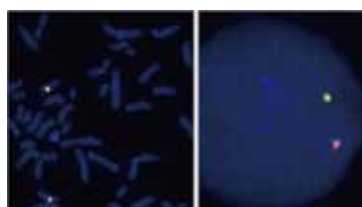
Cat.Num	FS0009			
Product Name	PDGFB Split FISH Probe			
	Probe Name	Size	Fluorophore	Location
Probe 1	PDGFB(Texas Red)	Approximately 470kb	Texas Red	22q13.1
Probe 2	PDGFB(FITC)	Approximately 610kb	FITC	22q13.1
Probe Gap	The gap between two probes is approximately 50 kb			



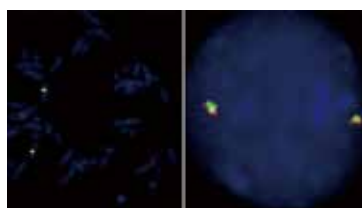
Cat.Num	FS0007			
Product Name	PDGFRB Split FISH Probe			
	Probe Name	Size	Fluorophore	Location
Probe 1	PDGFRB(Texas Red)	Approximately 380kb	Texas Red	5q33
Probe 2	PDGFRB(FITC)	Approximately 560kb	FITC	5q33
Probe Gap	The gap between two probes is approximately 0 kb.			



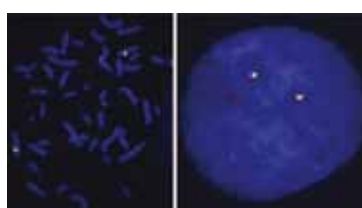
Cat.Num	FS0005			
Product Name	RARA Split FISH Probe			
	Probe Name	Size	Fluorophore	Location
Probe 1	RARA(Texas Red)	Approximately 490kb	Texas Red	17q21.2
Probe 2	RARA(FITC)	Approximately 690kb	FITC	17q21.2
Probe Gap	The gap between two probes is approximately 15 kb.			



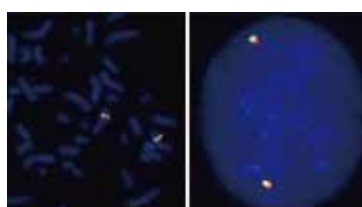
Cat.Num	FS0017			
Product Name	RET Split FISH Probe			
	Probe Name	Size	Fluorophore	Location
Probe 1	RET(Texas Red)	Approximately 200kb	Texas Red	10q11.2
Probe 2	RET(FITC)	Approximately 630kb	FITC	10q11.2
Probe Gap	The gap between two probes is approximately 750 kb.			



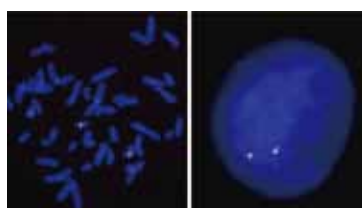
Cat.Num	FS0019			
Product Name	RET Split FISH Probe (V.2)			
	Probe Name	Size	Fluorophore	Location
Probe 1	RET(Texas Red)	Approximately 490kb	Texas Red	10q11.2
Probe 2	RET(FITC)	Approximately 630kb	FITC	10q11.2



Cat.Num	FS0015			
Product Name	ROS1 Split FISH Probe			
	Probe Name	Size	Fluorophore	Location
Probe 1	ROS1(Texas Red)	Approximately 250kb	Texas Red	6q22.1
Probe 2	ROS1(FITC)	Approximately 720kb	FITC	6q22.1
Probe Gap	The length of overlap between two probes is approximately 60 kb.			



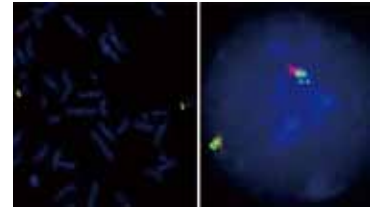
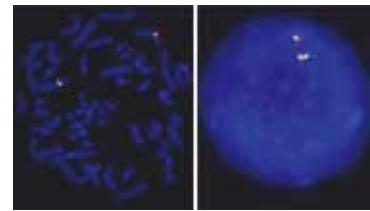
Cat.Num	FS0022			
Product Name	ROS1 Split FISH Probe			
	Probe Name	Size	Fluorophore	Location
Probe 1	ROS1(TexRed)	Approximately 310kb	Texas Red	6q22.1
Probe 2	ROS1(FITC)	Approximately 670kb	FITC	6q22.1
Probe Gap	The length of overlap between two probes is approximately 20 kb.			



Cat.Num	FS0002			
Product Name	SYT Split FISH Probe			
	Probe Name	Size	Fluorophore	Location
Probe 1	SYT(FITC)	Approximately 700kb	FITC	18q11.2
Probe 2	SYT(Texas Red)	Approximately 500kb	Texas Red	18q11.2
Probe Gap	The gap between two probes is approximately 110 kb.			

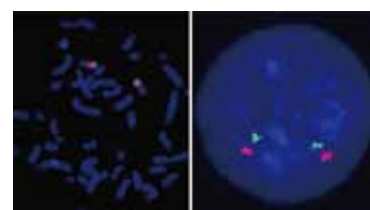
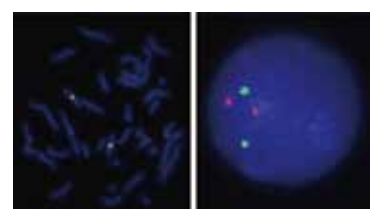
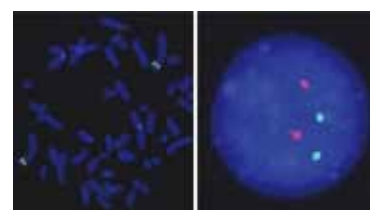
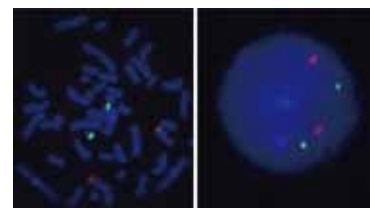
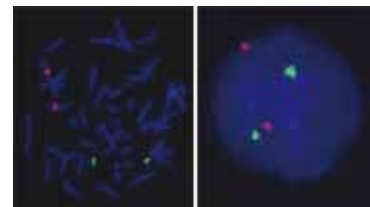
Split FISH Probes

Product Information				
Cat.Num	FS0004			
Product Name	TFE3 Split FISH Probe			
	Probe Name	Size	Fluorophore	Location
Probe 1	TFE3(Texas Red)	Approximately 570kb	Texas Red	Xp11.22
Probe 2	TFE3(FITC)	Approximately 550kb	FITC	Xp11.22
Probe Gap	The gap between two probes is approximately 90 kb.			
Cat.Num	FS0021			
Product Name	YWHAE Split FISH Probe			
	Probe Name	Size	Fluorophore	Location
Probe 1	YWHAE(TexRed)	Approximately 460kb	Texas Red	17q13.3
Probe 2	YWHAE(FITC)	Approximately 780kb	FITC	17q13.3
Probe Gap	The gap between two probes is approximately 25 kb.			

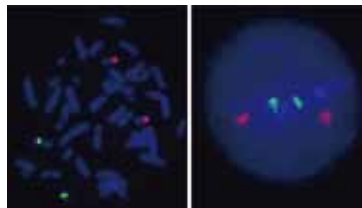


Translocation FISH Probes

Product Information				
Cat.Num	FT0003			
Product Name	AML1/ETO DY Translocation FISH Probe			
	Probe Name	Size	Fluorophore	Location
Probe 1	AML1	Approximately 1340kb	FITC	21q22.12
Probe 2	ETO	Approximately 1110kb	Texas Red	8q21.3
Cat.Num	FT0002			
Product Name	bcr/abl DY Translocation FISH Probe			
	Probe Name	Size	Fluorophore	Location
Probe 1	BCR	Approximately 1520kb	FITC	22q11.23
Probe 2	ABL	Approximately 780kb	Texas Red	9q34.1
Cat.Num	FT0001			
Product Name	EML4/ALK DY Translocation FISH Probe			
	Probe Name	Size	Fluorophore	Location
Probe 1	EML4	Approximately 1130kb	FITC	2p22-p21
Probe 2	ALK	Approximately 700kb	Texas Red	2p23
Probe Gap	The gap between two probes is approximately 13,900 kb.			
Cat.Num	FT0005			
Product Name	HEY1/NCOA2 DY Translocation FISH Probe			
	Probe Name	Size	Fluorophore	Location
Probe 1	NCOA2	Approximately 1300kb	Texas Red	8q13.3
Probe 2	HEY1	Approximately 1250kb	FITC	8q21.13
Probe Gap	The gap between two probes is approximately 8,200 kb.			
Cat.Num	FT0007			
Product Name	KIF5B/RET DY Translocation FISH Probe			
	Probe Name	Size	Fluorophore	Location
Probe 1	KIF5B	Approximately 1370kb	FITC	10p11.2
Probe 2	RET	Approximately 1180kb	Texas Red	10q11.2
Probe Gap	The gap between two probes is approximately 10,500 kb.			



Translocation FISH Probes



Product Information

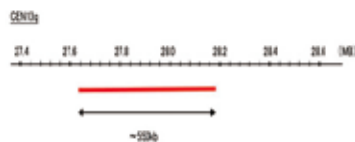
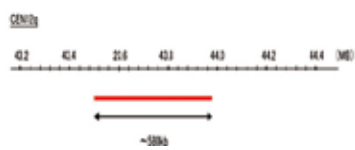
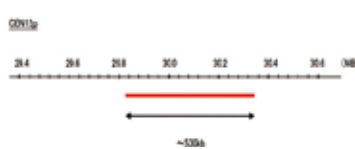
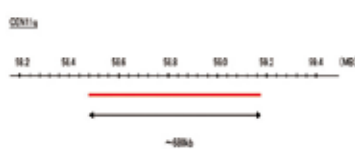
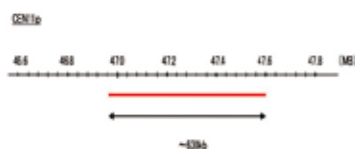
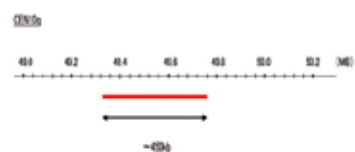
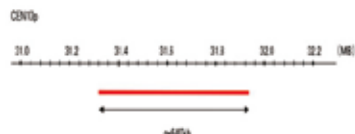
Cat.Num FT0006
Product Name KIF5B/RET SY Translocation FISH Probe

	Probe Name	Size	Fluorophore	Location
Probe 1	KIF5B	Approximately 620kb	Texas Red	10p11.2
Probe 2	RET	Approximately 630kb	FITC	10q11.2
Probe Gap	The gap between two probes is approximately 10,500 kb.			

Cat.Num FT0004
Product Name PML/RARA DY Translocation FISH Probe

	Probe Name	Size	Fluorophore	Location
Probe 1	RARA	Approximately 1200kb	FITC	17q21.2
Probe 2	PML	Approximately 540kb	Texas Red	15q24.1

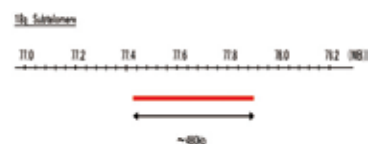
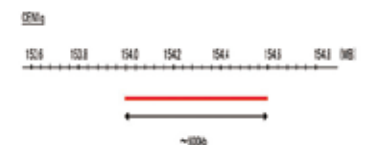
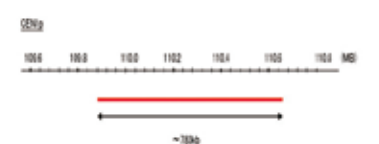
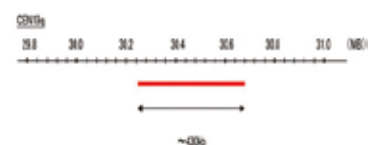
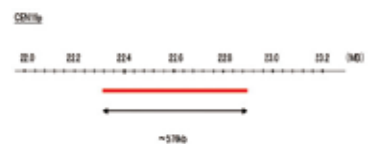
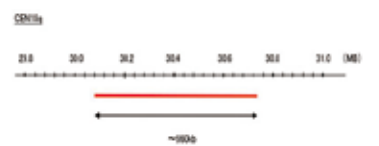
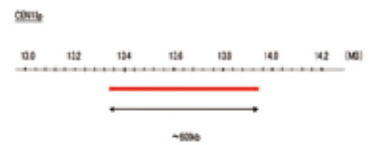
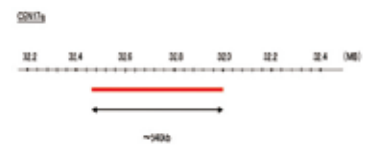
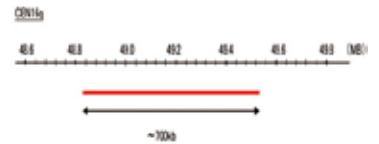
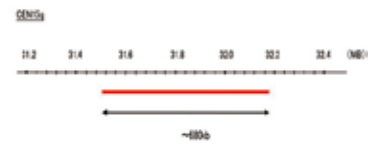
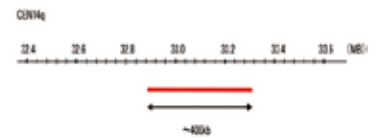
Chromosome FISH Probes



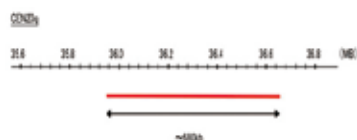
Cat. Num.	Product Name	Fluorophore	Size	Location
FC0090	CEN10p (Cy5) FISH Probe	Cy5	Approximately 640kb	10p11.22
FC0089	CEN10p (DEAC) FISH Probe	DEAC	Approximately 640kb	10p11.22
FC0086	CEN10p (FITC) FISH Probe	FITC	Approximately 640kb	10p11.22
FC0088	CEN10p (R6G) FISH Probe	R6G	Approximately 640kb	10p11.22
FC0087	CEN10p (Texas Red) FISH Probe	Texas Red	Approximately 640kb	10p11.22
FC0095	CEN10q (Cy5) FISH Probe	Cy5	Approximately 450kb	10q11.21
FC0094	CEN10q (DEAC) FISH Probe	DEAC	Approximately 450kb	10q11.21
FC0091	CEN10q (FITC) FISH Probe	FITC	Approximately 450kb	10q11.21
FC0093	CEN10q (R6G) FISH Probe	R6G	Approximately 450kb	10q11.21
FC0092	CEN10q (Texas Red) FISH Probe	Texas Red	Approximately 450kb	10q11.21
FC0100	CEN11p (Cy5) FISH Probe	Cy5	Approximately 630kb	11p11.12
FC0099	CEN11p (DEAC) FISH Probe	DEAC	Approximately 630kb	11p11.12
FC0096	CEN11p (FITC) FISH Probe	FITC	Approximately 630kb	11p11.12
FC0098	CEN11p (R6G) FISH Probe	R6G	Approximately 630kb	11p11.12
FC0097	CEN11p (Texas Red) FISH Probe	Texas Red	Approximately 630kb	11p11.12
FC0105	CEN11q (Cy5) FISH Probe	Cy5	Approximately 680kb	11q12.1
FC0104	CEN11q (DEAC) FISH Probe	DEAC	Approximately 680kb	11q12.1
FC0101	CEN11q (FITC) FISH Probe	FITC	Approximately 680kb	11q12.1
FC0103	CEN11q (R6G) FISH Probe	R6G	Approximately 680kb	11q12.1
FC0102	CEN11q (Texas Red) FISH Probe	Texas Red	Approximately 680kb	11q12.1
FC0110	CEN12p (Cy5) FISH Probe	Cy5	Approximately 530kb	12p11.22
FC0109	CEN12p (DEAC) FISH Probe	DEAC	Approximately 530kb	12p11.22
FC0106	CEN12p (FITC) FISH Probe	FITC	Approximately 530kb	12p11.22
FC0108	CEN12p (R6G) FISH Probe	R6G	Approximately 530kb	12p11.22
FC0107	CEN12p (Texas Red) FISH Probe	Texas Red	Approximately 530kb	12p11.22
FC0115	CEN12q (Cy5) FISH Probe	Cy5	Approximately 580kb	12q12
FC0114	CEN12q (DEAC) FISH Probe	DEAC	Approximately 580kb	12q12
FC0111	CEN12q (FITC) FISH Probe	FITC	Approximately 580kb	12q12
FC0113	CEN12q (R6G) FISH Probe	R6G	Approximately 580kb	12q12
FC0112	CEN12q (Texas Red) FISH Probe	Texas Red	Approximately 580kb	12q12
FC0120	CEN13q (Cy5) FISH Probe	Cy5	Approximately 550kb	13q12.11
FC0119	CEN13q (DEAC) FISH Probe	DEAC	Approximately 550kb	13q12.11
FC0116	CEN13q (FITC) FISH Probe	FITC	Approximately 550kb	13q12.11
FC0118	CEN13q (R6G) FISH Probe	R6G	Approximately 550kb	13q12.11
FC0117	CEN13q (Texas Red) FISH Probe	Texas Red	Approximately 550kb	13q12.11

Chromosome FISH Probes

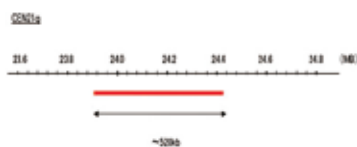
Cat. Num.	Product Name	Fluorophore	Size	Location
FC0125	CEN14q (Cy5) FISH Probe	Cy5	Approximately 400kb	14q11.2
FC0124	CEN14q (DEAC) FISH Probe	DEAC	Approximately 400kb	14q11.2
FC0121	CEN14q (FITC) FISH Probe	FITC	Approximately 400kb	14q11.2
FC0123	CEN14q (R6G) FISH Probe	R6G	Approximately 400kb	14q11.2
FC0122	CEN14q (Texas Red) FISH Probe	Texas Red	Approximately 400kb	14q11.2
FC0130	CEN15q (Cy5) FISH Probe	Cy5	Approximately 680kb	15q11.2
FC0129	CEN15q (DEAC) FISH Probe	DEAC	Approximately 680kb	15q11.2
FC0126	CEN15q (FITC) FISH Probe	FITC	Approximately 680kb	15q11.2
FC0128	CEN15q (R6G) FISH Probe	R6G	Approximately 680kb	15q11.2
FC0127	CEN15q (Texas Red) FISH Probe	Texas Red	Approximately 680kb	15q11.2
FC0135	CEN16q (Cy5) FISH Probe	Cy5	Approximately 700kb	16q12.1
FC0134	CEN16q (DEAC) FISH Probe	DEAC	Approximately 700kb	16q12.1
FC0131	CEN16q (FITC) FISH Probe	FITC	Approximately 700kb	16q12.1
FC0133	CEN16q (R6G) FISH Probe	R6G	Approximately 700kb	16q12.1
FC0132	CEN16q (Texas Red) FISH Probe	Texas Red	Approximately 700kb	16q12.1
FC0140	CEN17q (Cy5) FISH Probe	Cy5	Approximately 540kb	17q11.2
FC0139	CEN17q (DEAC) FISH Probe	DEAC	Approximately 540kb	17q11.2
FC0136	CEN17q (FITC) FISH Probe	FITC	Approximately 540kb	17q11.2
FC0138	CEN17q (R6G) FISH Probe	R6G	Approximately 540kb	17q11.2
FC0137	CEN17q (Texas Red) FISH Probe	Texas Red	Approximately 540kb	17q11.2
FC0145	CEN18p (Cy5) FISH Probe	Cy5	Approximately 600kb	18p11.21
FC0144	CEN18p (DEAC) FISH Probe	DEAC	Approximately 600kb	18p11.21
FC0141	CEN18p (FITC) FISH Probe	FITC	Approximately 600kb	18p11.21
FC0143	CEN18p (R6G) FISH Probe	R6G	Approximately 600kb	18p11.21
FC0142	CEN18p (Texas Red) FISH Probe	Texas Red	Approximately 600kb	18p11.21
FC0150	CEN18q (Cy5) FISH Probe	Cy5	Approximately 660kb	18q11.2
FC0149	CEN18q (DEAC) FISH Probe	DEAC	Approximately 660kb	18q11.2
FC0146	CEN18q (FITC) FISH Probe	FITC	Approximately 660kb	18q11.2
FC0148	CEN18q (R6G) FISH Probe	R6G	Approximately 660kb	18q11.2
FC0147	CEN18q (Texas Red) FISH Probe	Texas Red	Approximately 660kb	18q11.2
FC0155	CEN19p (Cy5) FISH Probe	Cy5	Approximately 570kb	19p13.11
FC0154	CEN19p (DEAC) FISH Probe	DEAC	Approximately 570kb	19p13.11
FC0151	CEN19p (FITC) FISH Probe	FITC	Approximately 570kb	19p13.11
FC0153	CEN19p (R6G) FISH Probe	R6G	Approximately 570kb	19p13.11
FC0152	CEN19p (Texas Red) FISH Probe	Texas Red	Approximately 570kb	19p13.11
FC0160	CEN19q (Cy5) FISH Probe	Cy5	Approximately 430kb	19q12
FC0159	CEN19q (DEAC) FISH Probe	DEAC	Approximately 430kb	19q12
FC0156	CEN19q (FITC) FISH Probe	FITC	Approximately 430kb	19q12
FC0158	CEN19q (R6G) FISH Probe	R6G	Approximately 430kb	19q12
FC0157	CEN19q (Texas Red) FISH Probe	Texas Red	Approximately 430kb	19q12
FC0005	CEN1p (Cy5) FISH Probe	Cy5	Approximately 780kb	1p13.3
FC0004	CEN1p (DEAC) FISH Probe	DEAC	Approximately 780kb	1p13.3
FC0001	CEN1p (FITC) FISH Probe	FITC	Approximately 780kb	1p13.3
FC0003	CEN1p (R6G) FISH Probe	R6G	Approximately 780kb	1p13.3
FC0002	CEN1p (Texas Red) FISH Probe	Texas Red	Approximately 780kb	1p13.3
FC0010	CEN1q (Cy5) FISH Probe	Cy5	Approximately 600kb	1q21.3
FC0009	CEN1q (DEAC) FISH Probe	DEAC	Approximately 600kb	1q21.3
FC0006	CEN1q (FITC) FISH Probe	FITC	Approximately 600kb	1q21.3
FC0008	CEN1q (R6G) FISH Probe	R6G	Approximately 600kb	1q21.3
FC0007	CEN1q (Texas Red) FISH Probe	Texas Red	Approximately 600kb	1q21.3
FC0165	CEN20p (Cy5) FISH Probe	Cy5	Approximately 400kb	20p11.21
FC0164	CEN20p (DEAC) FISH Probe	DEAC	Approximately 400kb	20p11.21
FC0161	CEN20p (FITC) FISH Probe	FITC	Approximately 400kb	20p11.21
FC0163	CEN20p (R6G) FISH Probe	R6G	Approximately 400kb	20p11.21
FC0162	CEN20p (Texas Red) FISH Probe	Texas Red	Approximately 400kb	20p11.21



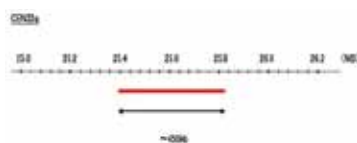
Chromosome FISH Probes



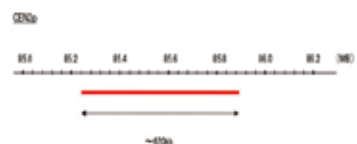
Cat. Num.	Product Name	Fluorophore	Size	Location
FC0170	CEN20q (Cy5) FISH Probe	Cy5	Approximately 680kb	20q11.22
FC0169	CEN20q (DEAC) FISH Probe	DEAC	Approximately 680kb	20q11.22
FC0166	CEN20q (FITC) FISH Probe	FITC	Approximately 680kb	20q11.22
FC0168	CEN20q (R6G) FISH Probe	R6G	Approximately 680kb	20q11.22
FC0167	CEN20q (Texas Red) FISH Probe	Texas Red	Approximately 680kb	20q11.22



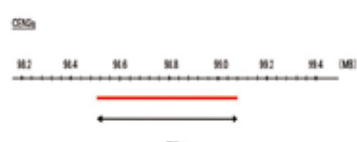
FC0175	CEN21q (Cy5) FISH Probe	Cy5	Approximately 520kb	21q11.2
FC0174	CEN21q (DEAC) FISH Probe	DEAC	Approximately 520kb	21q11.2
FC0171	CEN21q (FITC) FISH Probe	FITC	Approximately 520kb	21q11.2
FC0173	CEN21q (R6G) FISH Probe	R6G	Approximately 520kb	21q11.2
FC0172	CEN21q (Texas Red) FISH Probe	Texas Red	Approximately 520kb	21q11.2



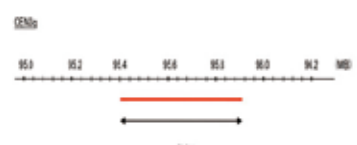
FC0180	CEN22q (Cy5) FISH Probe	Cy5	Approximately 450kb	22q11.22
FC0179	CEN22q (DEAC) FISH Probe	DEAC	Approximately 450kb	22q11.22
FC0176	CEN22q (FITC) FISH Probe	FITC	Approximately 450kb	22q11.22
FC0178	CEN22q (R6G) FISH Probe	R6G	Approximately 450kb	22q11.22
FC0177	CEN22q (Texas Red) FISH Probe	Texas Red	Approximately 450kb	22q11.22



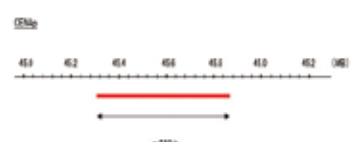
FC0015	CEN2p (Cy5) FISH Probe	Cy5	Approximately 670kb	2p11.2
FC0014	CEN2p (DEAC) FISH Probe	DEAC	Approximately 670kb	2p11.2
FC0011	CEN2p (FITC) FISH Probe	FITC	Approximately 670kb	2p11.2
FC0013	CEN2p (R6G) FISH Probe	R6G	Approximately 670kb	2p11.2
FC0012	CEN2p (Texas Red) FISH Probe	Texas Red	Approximately 670kb	2p11.2



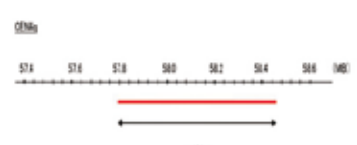
FC0020	CEN2q (Cy5) FISH Probe	Cy5	Approximately 580kb	2q11.2
FC0019	CEN2q (DEAC) FISH Probe	DEAC	Approximately 580kb	2q11.2
FC0016	CEN2q (FITC) FISH Probe	FITC	Approximately 580kb	2q11.2
FC0018	CEN2q (R6G) FISH Probe	R6G	Approximately 580kb	2q11.2
FC0017	CEN2q (Texas Red) FISH Probe	Texas Red	Approximately 580kb	2q11.2



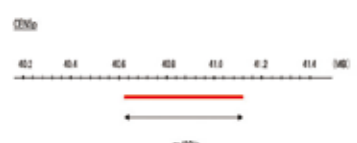
FC0025	CEN3q (Cy5) FISH Probe	Cy5	Approximately 500kb	3q12.1
FC0024	CEN3q (DEAC) FISH Probe	DEAC	Approximately 500kb	3q12.1
FC0021	CEN3q (FITC) FISH Probe	FITC	Approximately 500kb	3q12.1
FC0023	CEN3q (R6G) FISH Probe	R6G	Approximately 500kb	3q12.1
FC0022	CEN3q (Texas Red) FISH Probe	Texas Red	Approximately 500kb	3q12.1



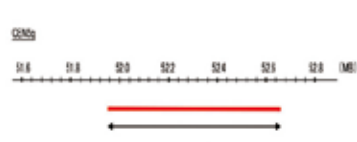
FC0030	CEN4p (Cy5) FISH Probe	Cy5	Approximately 660kb	4p13
FC0029	CEN4p (DEAC) FISH Probe	DEAC	Approximately 660kb	4p13
FC0026	CEN4p (FITC) FISH Probe	FITC	Approximately 660kb	4p13
FC0028	CEN4p (R6G) FISH Probe	R6G	Approximately 660kb	4p13
FC0027	CEN4p (Texas Red) FISH Probe	Texas Red	Approximately 660kb	4p13



FC0035	CEN4q (Cy5) FISH Probe	Cy5	Approximately 650kb	4q12
FC0034	CEN4q (DEAC) FISH Probe	DEAC	Approximately 650kb	4q12
FC0031	CEN4q (FITC) FISH Probe	FITC	Approximately 650kb	4q12
FC0033	CEN4q (R6G) FISH Probe	R6G	Approximately 650kb	4q12
FC0032	CEN4q (Texas Red) FISH Probe	Texas Red	Approximately 650kb	4q12



FC0040	CEN5p (Cy5) FISH Probe	Cy5	Approximately 490kb	5p12
FC0039	CEN5p (DEAC) FISH Probe	DEAC	Approximately 490kb	5p12
FC0036	CEN5p (FITC) FISH Probe	FITC	Approximately 490kb	5p12
FC0038	CEN5p (R6G) FISH Probe	R6G	Approximately 490kb	5p12
FC0037	CEN5p (Texas Red) FISH Probe	Texas Red	Approximately 490kb	5p12



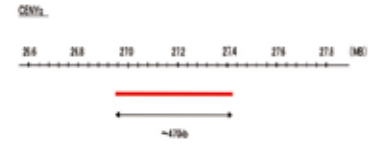
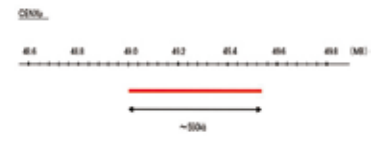
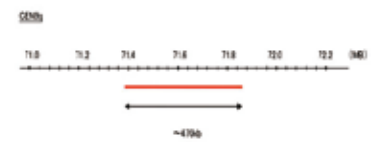
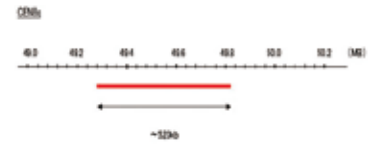
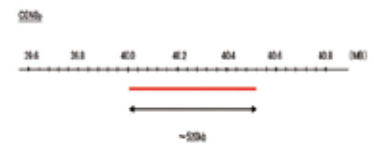
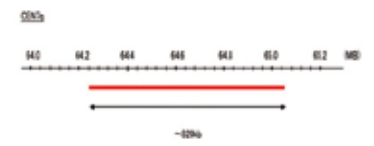
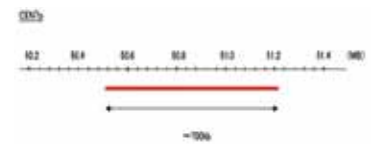
FC0045	CEN5q (Cy5) FISH Probe	Cy5	Approximately 700kb	5q11.2
FC0044	CEN5q (DEAC) FISH Probe	DEAC	Approximately 700kb	5q11.2
FC0041	CEN5q (FITC) FISH Probe	FITC	Approximately 700kb	5q11.2
FC0043	CEN5q (R6G) FISH Probe	R6G	Approximately 700kb	5q11.2
FC0042	CEN5q (Texas Red) FISH Probe	Texas Red	Approximately 700kb	5q11.2



FC0050	CEN6p (Cy5) FISH Probe	Cy5	Approximately 660kb	6p12.1
FC0049	CEN6p (DEAC) FISH Probe	DEAC	Approximately 660kb	6p12.1
FC0046	CEN6p (FITC) FISH Probe	FITC	Approximately 660kb	6p12.1
FC0048	CEN6p (R6G) FISH Probe	R6G	Approximately 660kb	6p12.1
FC0047	CEN6p (Texas Red) FISH Probe	Texas Red	Approximately 660kb	6p12.1

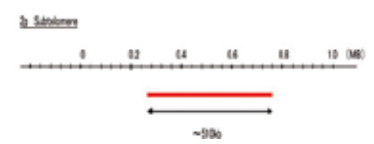
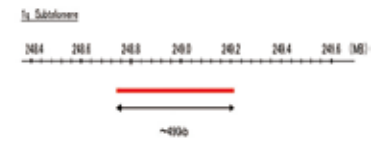
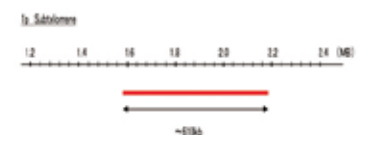
Chromosome FISH Probes

Cat. Num.	Product Name	Fluorophore	Size	Location
FC0055	CEN7p (Cy5) FISH Probe	Cy5	Approximately 700kb	7p12.1
FC0054	CEN7p (DEAC) FISH Probe	DEAC	Approximately 700kb	7p12.1
FC0051	CEN7p (FITC) FISH Probe	FITC	Approximately 700kb	7p12.1
FC0053	CEN7p (R6G) FISH Probe	R6G	Approximately 700kb	7p12.1
FC0052	CEN7p (Texas Red) FISH Probe	Texas Red	Approximately 700kb	7p12.1
FC0060	CEN7q (Cy5) FISH Probe	Cy5	Approximately 820kb	7q11.21
FC0059	CEN7q (DEAC) FISH Probe	DEAC	Approximately 820kb	7q11.21
FC0056	CEN7q (FITC) FISH Probe	FITC	Approximately 820kb	7q11.21
FC0058	CEN7q (R6G) FISH Probe	R6G	Approximately 820kb	7q11.21
FC0057	CEN7q (Texas Red) FISH Probe	Texas Red	Approximately 820kb	7q11.21
FC0065	CEN8p (Cy5) FISH Probe	Cy5	Approximately 520kb	8p11.21
FC0064	CEN8p (DEAC) FISH Probe	DEAC	Approximately 520kb	8p11.21
FC0061	CEN8p (FITC) FISH Probe	FITC	Approximately 520kb	8p11.21
FC0063	CEN8p (R6G) FISH Probe	R6G	Approximately 520kb	8p11.21
FC0062	CEN8p (Texas Red) FISH Probe	Texas Red	Approximately 520kb	8p11.21
FC0070	CEN8q (Cy5) FISH Probe	Cy5	Approximately 520kb	8q11.21
FC0069	CEN8q (DEAC) FISH Probe	DEAC	Approximately 520kb	8q11.21
FC0066	CEN8q (FITC) FISH Probe	FITC	Approximately 520kb	8q11.21
FC0068	CEN8q (R6G) FISH Probe	R6G	Approximately 520kb	8q11.21
FC0067	CEN8q (Texas Red) FISH Probe	Texas Red	Approximately 520kb	8q11.21
FC0075	CEN9q (Cy5) FISH Probe	Cy5	Approximately 470kb	9q21
FC0074	CEN9q (DEAC) FISH Probe	DEAC	Approximately 470kb	9q21
FC0071	CEN9q (FITC) FISH Probe	FITC	Approximately 470kb	9q21
FC0073	CEN9q (R6G) FISH Probe	R6G	Approximately 470kb	9q21
FC0072	CEN9q (Texas Red) FISH Probe	Texas Red	Approximately 470kb	9q21
FC0080	CENXp (Cy5) FISH Probe	Cy5	Approximately 550kb	Xp11.23
FC0079	CENXp (DEAC) FISH Probe	DEAC	Approximately 550kb	Xp11.23
FC0076	CENXp (FITC) FISH Probe	FITC	Approximately 550kb	Xp11.23
FC0078	CENXp (R6G) FISH Probe	R6G	Approximately 550kb	Xp11.23
FC0077	CENXp (Texas Red) FISH Probe	Texas Red	Approximately 550kb	Xp11.23
FC0085	CENYq (Cy5) FISH Probe	Cy5	Approximately 470kb	Yq11.221
FC0084	CENYq (DEAC) FISH Probe	DEAC	Approximately 470kb	Yq11.221
FC0081	CENYq (FITC) FISH Probe	FITC	Approximately 470kb	Yq11.221
FC0083	CENYq (R6G) FISH Probe	R6G	Approximately 470kb	Yq11.221
FC0082	CENYq (Texas Red) FISH Probe	Texas Red	Approximately 470kb	Yq11.221

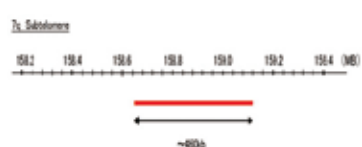
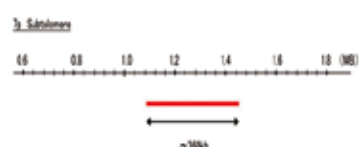
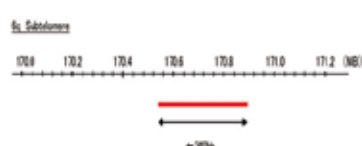
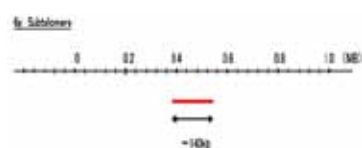
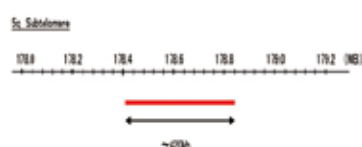
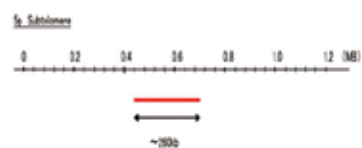
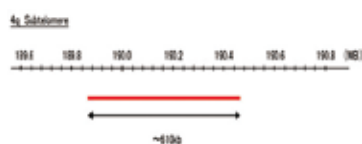
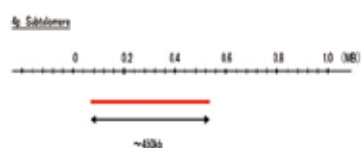
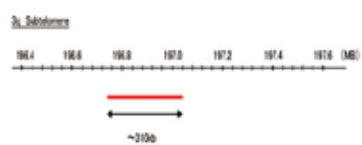
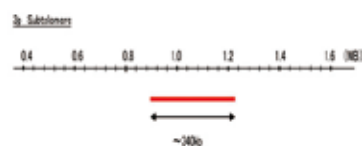
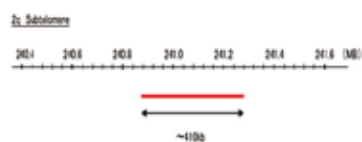


Subtelomere FISH Probes

Cat. Num.	Product Name	Fluorophore	Size	Location
FE0005	1p Subtelomere(Cy5) FISH Probe	Cy5	Approximately 610kb	1p Subtelomere
FE0004	1p Subtelomere(DEAC) FISH Probe	DEAC	Approximately 610kb	1p Subtelomere
FE0001	1p Subtelomere(FITC) FISH Probe	FITC	Approximately 610kb	1p Subtelomere
FE0003	1p Subtelomere(R6G) FISH Probe	R6G	Approximately 610kb	1p Subtelomere
FE0002	1p Subtelomere(Texas Red) FISH Probe	Texas Red	Approximately 610kb	1p Subtelomere
FE0010	1q Subtelomere(Cy5) FISH Probe	Cy5	Approximately 490kb	1q Subtelomere
FE0009	1q Subtelomere(DEAC) FISH Probe	DEAC	Approximately 490kb	1q Subtelomere
FE0006	1q Subtelomere(FITC) FISH Probe	FITC	Approximately 490kb	1q Subtelomere
FE0008	1q Subtelomere(R6G) FISH Probe	R6G	Approximately 490kb	1q Subtelomere
FE0007	1q Subtelomere(Texas Red) FISH Probe	Texas Red	Approximately 490kb	1q Subtelomere
FE0015	2p Subtelomere(Cy5) FISH Probe	Cy5	Approximately 510kb	2p Subtelomere
FE0014	2p Subtelomere(DEAC) FISH Probe	DEAC	Approximately 510kb	2p Subtelomere
FE0011	2p Subtelomere(FITC) FISH Probe	FITC	Approximately 510kb	2p Subtelomere
FE0013	2p Subtelomere(R6G) FISH Probe	R6G	Approximately 510kb	2p Subtelomere
FE0012	2p Subtelomere(Texas Red) FISH Probe	Texas Red	Approximately 510kb	2p Subtelomere



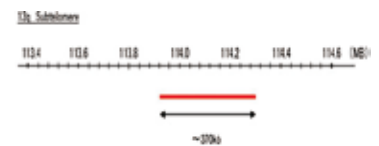
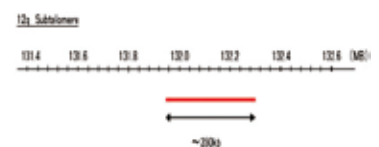
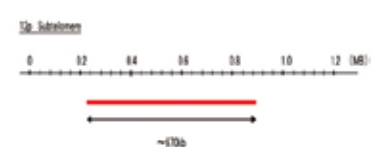
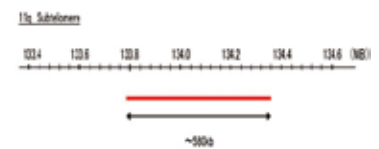
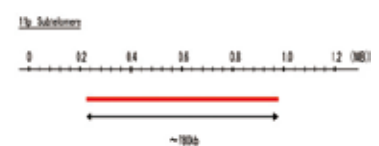
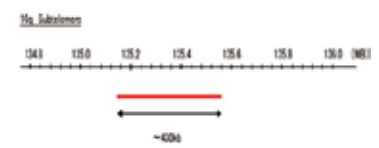
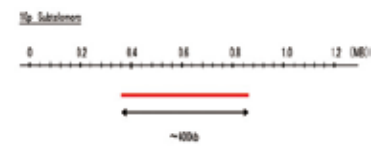
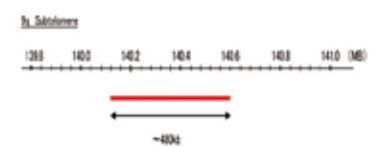
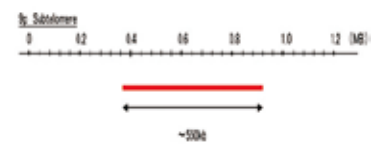
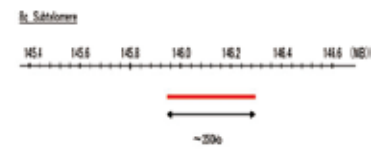
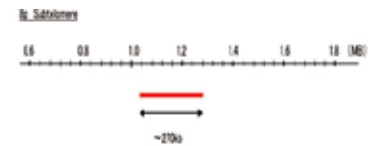
Subtelomere FISH Probes



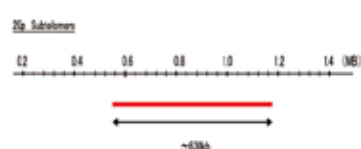
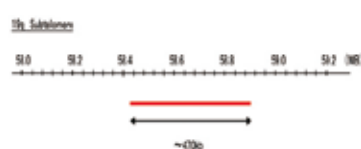
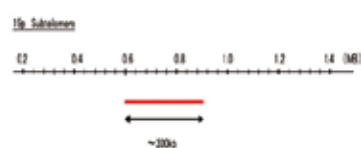
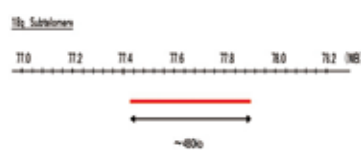
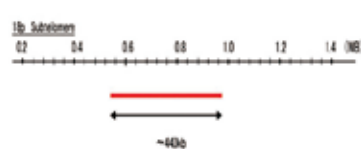
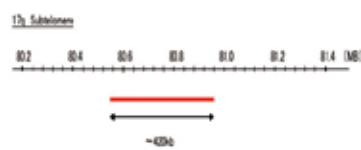
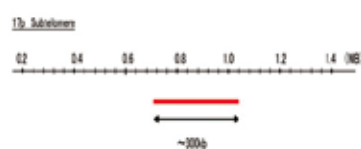
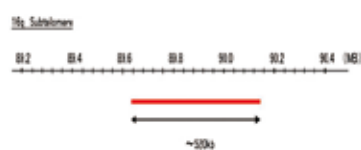
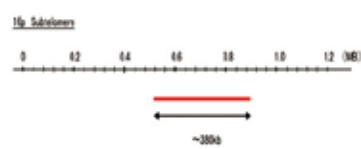
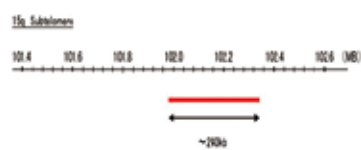
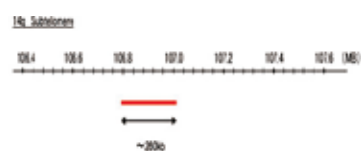
Cat. Num.	Product Name	Fluorophore	Size	Location
FE0020	2q Subtelomere(Cy5) FISH Probe	Cy5	Approximately 410kb	2q Subtelomere
FE0019	2q Subtelomere(DEAC) FISH Probe	DEAC	Approximately 410kb	2q Subtelomere
FE0016	2q Subtelomere(FITC) FISH Probe	FITC	Approximately 410kb	2q Subtelomere
FE0018	2q Subtelomere(R6G) FISH Probe	R6G	Approximately 410kb	2q Subtelomere
FE0017	2q Subtelomere(Texas Red) FISH Probe	Texas Red	Approximately 410kb	2q Subtelomere
FE0025	3p Subtelomere(Cy5) FISH Probe	Cy5	Approximately 340kb	3p Subtelomere
FE0024	3p Subtelomere(DEAC) FISH Probe	DEAC	Approximately 340kb	3p Subtelomere
FE0021	3p Subtelomere(FITC) FISH Probe	FITC	Approximately 340kb	3p Subtelomere
FE0023	3p Subtelomere(R6G) FISH Probe	R6G	Approximately 340kb	3p Subtelomere
FE0022	3p Subtelomere(Texas Red) FISH Probe	Texas Red	Approximately 340kb	3p Subtelomere
FE0030	3q Subtelomere(Cy5) FISH Probe	Cy5	Approximately 310kb	3q Subtelomere
FE0029	3q Subtelomere(DEAC) FISH Probe	DEAC	Approximately 310kb	3q Subtelomere
FE0026	3q Subtelomere(FITC) FISH Probe	FITC	Approximately 310kb	3q Subtelomere
FE0028	3q Subtelomere(R6G) FISH Probe	R6G	Approximately 310kb	3q Subtelomere
FE0027	3q Subtelomere(Texas Red) FISH Probe	Texas Red	Approximately 310kb	3q Subtelomere
FE0035	4p Subtelomere(Cy5) FISH Probe	Cy5	Approximately 450kb	4p Subtelomere
FE0034	4p Subtelomere(DEAC) FISH Probe	DEAC	Approximately 450kb	4p Subtelomere
FE0031	4p Subtelomere(FITC) FISH Probe	FITC	Approximately 450kb	4p Subtelomere
FE0033	4p Subtelomere(R6G) FISH Probe	R6G	Approximately 450kb	4p Subtelomere
FE0032	4p Subtelomere(Texas Red) FISH Probe	Texas Red	Approximately 450kb	4p Subtelomere
FE0040	4q Subtelomere(Cy5) FISH Probe	Cy5	Approximately 610kb	4q Subtelomere
FE0039	4q Subtelomere(DEAC) FISH Probe	DEAC	Approximately 610kb	4q Subtelomere
FE0036	4q Subtelomere(FITC) FISH Probe	FITC	Approximately 610kb	4q Subtelomere
FE0038	4q Subtelomere(R6G) FISH Probe	R6G	Approximately 610kb	4q Subtelomere
FE0037	4q Subtelomere(Texas Red) FISH Probe	Texas Red	Approximately 610kb	4q Subtelomere
FE0045	5p Subtelomere(Cy5) FISH Probe	Cy5	Approximately 260kb	5p Subtelomere
FE0044	5p Subtelomere(DEAC) FISH Probe	DEAC	Approximately 260kb	5p Subtelomere
FE0041	5p Subtelomere(FITC) FISH Probe	FITC	Approximately 260kb	5p Subtelomere
FE0043	5p Subtelomere(R6G) FISH Probe	R6G	Approximately 260kb	5p Subtelomere
FE0042	5p Subtelomere(Texas Red) FISH Probe	Texas Red	Approximately 260kb	5p Subtelomere
FE0050	5q Subtelomere(Cy5) FISH Probe	Cy5	Approximately 420kb	5q Subtelomere
FE0049	5q Subtelomere(DEAC) FISH Probe	DEAC	Approximately 420kb	5q Subtelomere
FE0046	5q Subtelomere(FITC) FISH Probe	FITC	Approximately 420kb	5q Subtelomere
FE0048	5q Subtelomere(R6G) FISH Probe	R6G	Approximately 420kb	5q Subtelomere
FE0047	5q Subtelomere(Texas Red) FISH Probe	Texas Red	Approximately 420kb	5q Subtelomere
FE0055	6p Subtelomere(Cy5) FISH Probe	Cy5	Approximately 140kb	6p Subtelomere
FE0054	6p Subtelomere(DEAC) FISH Probe	DEAC	Approximately 140kb	6p Subtelomere
FE0051	6p Subtelomere(FITC) FISH Probe	FITC	Approximately 140kb	6p Subtelomere
FE0053	6p Subtelomere(R6G) FISH Probe	R6G	Approximately 140kb	6p Subtelomere
FE0052	6p Subtelomere(Texas Red) FISH Probe	Texas Red	Approximately 140kb	6p Subtelomere
FE0060	6q Subtelomere(Cy5) FISH Probe	Cy5	Approximately 340kb	6q Subtelomere
FE0059	6q Subtelomere(DEAC) FISH Probe	DEAC	Approximately 340kb	6q Subtelomere
FE0056	6q Subtelomere(FITC) FISH Probe	FITC	Approximately 340kb	6q Subtelomere
FE0058	6q Subtelomere(R6G) FISH Probe	R6G	Approximately 340kb	6q Subtelomere
FE0057	6q Subtelomere(Texas Red) FISH Probe	Texas Red	Approximately 340kb	6q Subtelomere
FE0065	7p Subtelomere(Cy5) FISH Probe	Cy5	Approximately 360kb	7p Subtelomere
FE0064	7p Subtelomere(DEAC) FISH Probe	DEAC	Approximately 360kb	7p Subtelomere
FE0061	7p Subtelomere(FITC) FISH Probe	FITC	Approximately 360kb	7p Subtelomere
FE0063	7p Subtelomere(R6G) FISH Probe	R6G	Approximately 360kb	7p Subtelomere
FE0062	7p Subtelomere(Texas Red) FISH Probe	Texas Red	Approximately 360kb	7p Subtelomere
FE0070	7q Subtelomere(Cy5) FISH Probe	Cy5	Approximately 460kb	7q Subtelomere
FE0069	7q Subtelomere(DEAC) FISH Probe	DEAC	Approximately 460kb	7q Subtelomere
FE0066	7q Subtelomere(FITC) FISH Probe	FITC	Approximately 460kb	7q Subtelomere
FE0068	7q Subtelomere(R6G) FISH Probe	R6G	Approximately 460kb	7q Subtelomere
FE0067	7q Subtelomere(Texas Red) FISH Probe	Texas Red	Approximately 460kb	7q Subtelomere

Subtelomere FISH Probes

Cat. Num.	Product Name	Fluorophore	Size	Location
FE0075	8p Subtelomere(Cy5) FISH Probe	Cy5	Approximately 270kb	8p Subtelomere
FE0074	8p Subtelomere(DEAC) FISH Probe	DEAC	Approximately 270kb	8p Subtelomere
FE0071	8p Subtelomere(FITC) FISH Probe	FITC	Approximately 270kb	8p Subtelomere
FE0073	8p Subtelomere(R6G) FISH Probe	R6G	Approximately 270kb	8p Subtelomere
FE0072	8p Subtelomere(Texas Red) FISH Probe	Texas Red	Approximately 270kb	8p Subtelomere
FE0080	8q Subtelomere(Cy5) FISH Probe	Cy5	Approximately 350kb	8q Subtelomere
FE0079	8q Subtelomere(DEAC) FISH Probe	DEAC	Approximately 350kb	8q Subtelomere
FE0076	8q Subtelomere(FITC) FISH Probe	FITC	Approximately 350kb	8q Subtelomere
FE0078	8q Subtelomere(R6G) FISH Probe	R6G	Approximately 350kb	8q Subtelomere
FE0077	8q Subtelomere(Texas Red) FISH Probe	Texas Red	Approximately 350kb	8q Subtelomere
FE0085	9p Subtelomere(Cy5) FISH Probe	Cy5	Approximately 550kb	9p Subtelomere
FE0084	9p Subtelomere(DEAC) FISH Probe	DEAC	Approximately 550kb	9p Subtelomere
FE0081	9p Subtelomere(FITC) FISH Probe	FITC	Approximately 550kb	9p Subtelomere
FE0083	9p Subtelomere(R6G) FISH Probe	R6G	Approximately 550kb	9p Subtelomere
FE0082	9p Subtelomere(Texas Red) FISH Probe	Texas Red	Approximately 550kb	9p Subtelomere
FE0090	9q Subtelomere(Cy5) FISH Probe	Cy5	Approximately 480kb	9q Subtelomere
FE0089	9q Subtelomere(DEAC) FISH Probe	DEAC	Approximately 480kb	9q Subtelomere
FE0086	9q Subtelomere(FITC) FISH Probe	FITC	Approximately 480kb	9q Subtelomere
FE0088	9q Subtelomere(R6G) FISH Probe	R6G	Approximately 480kb	9q Subtelomere
FE0087	9q Subtelomere(Texas Red) FISH Probe	Texas Red	Approximately 480kb	9q Subtelomere
FE0095	10p Subtelomere(Cy5) FISH Probe	Cy5	Approximately 400kb	10p Subtelomere
FE0094	10p Subtelomere(DEAC) FISH Probe	DEAC	Approximately 400kb	10p Subtelomere
FE0091	10p Subtelomere(FITC) FISH Probe	FITC	Approximately 400kb	10p Subtelomere
FE0093	10p Subtelomere(R6G) FISH Probe	R6G	Approximately 400kb	10p Subtelomere
FE0092	10p Subtelomere(Texas Red) FISH Probe	Texas Red	Approximately 400kb	10p Subtelomere
FE0100	10q Subtelomere(Cy5) FISH Probe	Cy5	Approximately 430kb	10q Subtelomere
FE0099	10q Subtelomere(DEAC) FISH Probe	DEAC	Approximately 430kb	10q Subtelomere
FE0096	10q Subtelomere(FITC) FISH Probe	FITC	Approximately 430kb	10q Subtelomere
FE0098	10q Subtelomere(R6G) FISH Probe	R6G	Approximately 430kb	10q Subtelomere
FE0097	10q Subtelomere(Texas Red) FISH Probe	Texas Red	Approximately 430kb	10q Subtelomere
FE0105	11p Subtelomere(Cy5) FISH Probe	Cy5	Approximately 780kb	11p Subtelomere
FE0104	11p Subtelomere(DEAC) FISH Probe	DEAC	Approximately 780kb	11p Subtelomere
FE0101	11p Subtelomere(FITC) FISH Probe	FITC	Approximately 780kb	11p Subtelomere
FE0103	11p Subtelomere(R6G) FISH Probe	R6G	Approximately 780kb	11p Subtelomere
FE0102	11p Subtelomere(Texas Red) FISH Probe	Texas Red	Approximately 780kb	11p Subtelomere
FE0110	11q Subtelomere(Cy5) FISH Probe	Cy5	Approximately 580kb	11q Subtelomere
FE0109	11q Subtelomere(DEAC) FISH Probe	DEAC	Approximately 580kb	11q Subtelomere
FE0106	11q Subtelomere(FITC) FISH Probe	FITC	Approximately 580kb	11q Subtelomere
FE0108	11q Subtelomere(R6G) FISH Probe	R6G	Approximately 580kb	11q Subtelomere
FE0107	11q Subtelomere(Texas Red) FISH Probe	Texas Red	Approximately 580kb	11q Subtelomere
FE0115	12p Subtelomere(Cy5) FISH Probe	Cy5	Approximately 670kb	12p Subtelomere
FE0114	12p Subtelomere(DEAC) FISH Probe	DEAC	Approximately 670kb	12p Subtelomere
FE0111	12p Subtelomere(FITC) FISH Probe	FITC	Approximately 670kb	12p Subtelomere
FE0113	12p Subtelomere(R6G) FISH Probe	R6G	Approximately 670kb	12p Subtelomere
FE0112	12p Subtelomere(Texas Red) FISH Probe	Texas Red	Approximately 670kb	12p Subtelomere
FE0120	12q Subtelomere(Cy5) FISH Probe	Cy5	Approximately 350kb	12q Subtelomere
FE0119	12q Subtelomere(DEAC) FISH Probe	DEAC	Approximately 350kb	12q Subtelomere
FE0116	12q Subtelomere(FITC) FISH Probe	FITC	Approximately 350kb	12q Subtelomere
FE0118	12q Subtelomere(R6G) FISH Probe	R6G	Approximately 350kb	12q Subtelomere
FE0117	12q Subtelomere(Texas Red) FISH Probe	Texas Red	Approximately 350kb	12q Subtelomere
FE0125	13q Subtelomere(Cy5) FISH Probe	Cy5	Approximately 370kb	13q Subtelomere
FE0124	13q Subtelomere(DEAC) FISH Probe	DEAC	Approximately 370kb	13q Subtelomere
FE0121	13q Subtelomere(FITC) FISH Probe	FITC	Approximately 370kb	13q Subtelomere
FE0123	13q Subtelomere(R6G) FISH Probe	R6G	Approximately 370kb	13q Subtelomere
FE0122	13q Subtelomere(Texas Red) FISH Probe	Texas Red	Approximately 370kb	13q Subtelomere



Subtelomere FISH Probes



Cat. Num.	Product Name	Fluorophore	Size	Location
FE0130	14q Subtelomere(Cy5) FISH Probe	Cy5	Approximately 260kb	14q Subtelomere
FE0129	14q Subtelomere(DEAC) FISH Probe	DEAC	Approximately 260kb	14q Subtelomere
FE0126	14q Subtelomere(FITC) FISH Probe	FITC	Approximately 260kb	14q Subtelomere
FE0128	14q Subtelomere(R6G) FISH Probe	R6G	Approximately 260kb	14q Subtelomere
FE0127	14q Subtelomere(Texas Red) FISH Probe	Texas Red	Approximately 260kb	14q Subtelomere
FE0135	15q Subtelomere(Cy5) FISH Probe	Cy5	Approximately 240kb	15q Subtelomere
FE0134	15q Subtelomere(DEAC) FISH Probe	DEAC	Approximately 240kb	15q Subtelomere
FE0131	15q Subtelomere(FITC) FISH Probe	FITC	Approximately 240kb	15q Subtelomere
FE0133	15q Subtelomere(R6G) FISH Probe	R6G	Approximately 240kb	15q Subtelomere
FE0132	15q Subtelomere(Texas Red) FISH Probe	Texas Red	Approximately 240kb	15q Subtelomere
FE0140	16p Subtelomere(Cy5) FISH Probe	Cy5	Approximately 380kb	16p Subtelomere
FE0139	16p Subtelomere(DEAC) FISH Probe	DEAC	Approximately 380kb	16p Subtelomere
FE0136	16p Subtelomere(FITC) FISH Probe	FITC	Approximately 380kb	16p Subtelomere
FE0138	16p Subtelomere(R6G) FISH Probe	R6G	Approximately 380kb	16p Subtelomere
FE0137	16p Subtelomere(Texas Red) FISH Probe	Texas Red	Approximately 380kb	16p Subtelomere
FE0145	16q Subtelomere(Cy5) FISH Probe	Cy5	Approximately 520kb	16q Subtelomere
FE0144	16q Subtelomere(DEAC) FISH Probe	DEAC	Approximately 520kb	16q Subtelomere
FE0141	16q Subtelomere(FITC) FISH Probe	FITC	Approximately 520kb	16q Subtelomere
FE0143	16q Subtelomere(R6G) FISH Probe	R6G	Approximately 520kb	16q Subtelomere
FE0142	16q Subtelomere(Texas Red) FISH Probe	Texas Red	Approximately 520kb	16q Subtelomere
FE0150	17p Subtelomere(Cy5) FISH Probe	Cy5	Approximately 300kb	17p Subtelomere
FE0149	17p Subtelomere(DEAC) FISH Probe	DEAC	Approximately 300kb	17p Subtelomere
FE0146	17p Subtelomere(FITC) FISH Probe	FITC	Approximately 300kb	17p Subtelomere
FE0148	17p Subtelomere(R6G) FISH Probe	R6G	Approximately 300kb	17p Subtelomere
FE0147	17p Subtelomere(Texas Red) FISH Probe	Texas Red	Approximately 300kb	17p Subtelomere
FE0155	17q Subtelomere(Cy5) FISH Probe	Cy5	Approximately 420kb	17q Subtelomere
FE0154	17q Subtelomere(DEAC) FISH Probe	DEAC	Approximately 420kb	17q Subtelomere
FE0151	17q Subtelomere(FITC) FISH Probe	FITC	Approximately 420kb	17q Subtelomere
FE0153	17q Subtelomere(R6G) FISH Probe	R6G	Approximately 420kb	17q Subtelomere
FE0152	17q Subtelomere(Texas Red) FISH Probe	Texas Red	Approximately 420kb	17q Subtelomere
FE0160	18p Subtelomere(Cy5) FISH Probe	Cy5	Approximately 440kb	18p Subtelomere
FE0159	18p Subtelomere(DEAC) FISH Probe	DEAC	Approximately 440kb	18p Subtelomere
FE0156	18p Subtelomere(FITC) FISH Probe	FITC	Approximately 440kb	18p Subtelomere
FE0158	18p Subtelomere(R6G) FISH Probe	R6G	Approximately 440kb	18p Subtelomere
FE0157	18p Subtelomere(Texas Red) FISH Probe	Texas Red	Approximately 440kb	18p Subtelomere
FE0165	18q Subtelomere(Cy5) FISH Probe	Cy5	Approximately 480kb	18q Subtelomere
FE0164	18q Subtelomere(DEAC) FISH Probe	DEAC	Approximately 480kb	18q Subtelomere
FE0161	18q Subtelomere(FITC) FISH Probe	FITC	Approximately 480kb	18q Subtelomere
FE0163	18q Subtelomere(R6G) FISH Probe	R6G	Approximately 480kb	18q Subtelomere
FE0162	18q Subtelomere(Texas Red) FISH Probe	Texas Red	Approximately 480kb	18q Subtelomere
FE0170	19p Subtelomere(Cy5) FISH Probe	Cy5	Approximately 300kb	19p Subtelomere
FE0169	19p Subtelomere(DEAC) FISH Probe	DEAC	Approximately 300kb	19p Subtelomere
FE0166	19p Subtelomere(FITC) FISH Probe	FITC	Approximately 300kb	19p Subtelomere
FE0168	19p Subtelomere(R6G) FISH Probe	R6G	Approximately 300kb	19p Subtelomere
FE0167	19p Subtelomere(Texas Red) FISH Probe	Texas Red	Approximately 300kb	19p Subtelomere
FE0175	19q Subtelomere(Cy5) FISH Probe	Cy5	Approximately 470kb	19q Subtelomere
FE0174	19q Subtelomere(DEAC) FISH Probe	DEAC	Approximately 470kb	19q Subtelomere
FE0171	19q Subtelomere(FITC) FISH Probe	FITC	Approximately 470kb	19q Subtelomere
FE0173	19q Subtelomere(R6G) FISH Probe	R6G	Approximately 470kb	19q Subtelomere
FE0172	19q Subtelomere(Texas Red) FISH Probe	Texas Red	Approximately 470kb	19q Subtelomere
FE0180	20p Subtelomere(Cy5) FISH Probe	Cy5	Approximately 630kb	20p Subtelomere
FE0179	20p Subtelomere(DEAC) FISH Probe	DEAC	Approximately 630kb	20p Subtelomere
FE0176	20p Subtelomere(FITC) FISH Probe	FITC	Approximately 630kb	20p Subtelomere
FE0178	20p Subtelomere(R6G) FISH Probe	R6G	Approximately 630kb	20p Subtelomere
FE0177	20p Subtelomere(Texas Red) FISH Probe	Texas Red	Approximately 630kb	20p Subtelomere

Subtelomere FISH Probes

Make to order

Cat. Num.	Product Name	Cat. Num.	Product Name
FA0520	ABCG2(Texas Red)/CEN4q(FITC) FISH Probe	FA0369	CNGB1 FISH Probe
FA0053	ABL2 FISH Probe	FA0281	CNTF FISH Probe
FA0427	ACSS1 FISH Probe	FA0286	CPT1A FISH Probe
FA0605	ADA(Texas Red)/CEN20p(FITC) FISH Probe	FA0356	CREBBP FISH Probe
FA0254	ADK FISH Probe	FA0500	c-rel(Texas Red)/CEN2p(FITC) FISH Probe
FA0554	AF10(Texas Red)/CEN10q(FITC) FISH Probe	FA0609	CSE1(Texas Red)/CEN20p(FITC) FISH Probe
FA0519	AF4(Texas Red)/CEN4p(FITC) FISH Probe	FA0106	CSTA FISH Probe
FA0546	AF9(Texas Red)/CEN9q(FITC) FISH Probe	FA0176	CTGF FISH Probe
FA0022	ALPL FISH Probe	FA0150	CTNNA1 FISH Probe
FA0210	ANGPT2 FISH Probe	FA0621	CTNNAL1(Texas Red)/CEN9q(FITC) FISH Probe
FA0071	ANKRD36B FISH Probe	FA0542	CTSB1(Texas Red)/CEN8p(FITC) FISH Probe
FA0134	ANP32C FISH Probe	FA0249	CUL2 FISH Probe
FA0232	APBA1 FISH Probe	FA0196	CUX1 FISH Probe
FA0596	APOC2(Texas Red)/CEN19p(FITC) FISH Probe	FA0125	CXCL2 FISH Probe
FA0617	AR(Texas Red)/CENXp(FITC) FISH Probe	FA0365	CYLD FISH Probe
FA0620	ARMET(Texas Red)/CEN3q(FITC) FISH Probe	FA0350	CYP11A1 FISH Probe
FA0057	ATF3 FISH Probe	FA0233	DAPK1 FISH Probe
FA0562	ATM(Texas Red)/CEN11q(FITC) FISH Probe	FA0619	DAZ1(Texas Red or FITC) FISH Probe
FA0601	AVP(Texas Red)/CEN20q(FITC) FISH Probe	FA0591	DCC(Texas Red)/CEN18q(FITC) FISH Probe
FA0600	AXL(Texas Red)/CEN19q(FITC) FISH Probe	FA0279	DDB2 FISH Probe
FA0172	BACH2 FISH Probe	FA0528	DDR1(Texas Red)/CEN6p(FITC) FISH Probe
FA0170	BAI3 FISH Probe	FA0493	DDR2(Texas Red)/CEN1p(FITC) FISH Probe
FA0374	BCAR1 FISH Probe	FA0527	dek(Texas Red)/CEN6p(FITC) FISH Probe
FA0492	BCAS2(Texas Red)/CEN1p(FITC) FISH Probe	FA0290	DHCR7 FISH Probe
FA0171	BCKDHB FISH Probe	FA0027	DHDDS FISH Probe
FA0040	BCL10 FISH Probe	FA0039	DIRAS3 FISH Probe
FA0592	BCL2(Texas Red)/CEN18q(FITC) FISH Probe	FA0213	DLC1 FISH Probe
FA0599	BCL3(Texas Red)/CEN19p(FITC) FISH Probe	FA0093	DLEC1 FISH Probe
FA0512	BCL6(Texas Red)/CEN3q(FITC) FISH Probe	FA0119	DLG1 FISH Probe
FA0453	BCR FISH Probe	FA0616	DMD(Texas Red)/CENXp(FITC) FISH Probe
FA0625	BDNF(Texas Red)/CEN11p(FITC) FISH Probe	FA0005	DNAJC11 FISH Probe
FA0399	BIRC5 FISH Probe	FA0042	DPYD FISH Probe
FA0430	BLCAP FISH Probe	FA0595	E2A(Texas Red)/CEN19q(FITC) FISH Probe
FA0351	BLM FISH Probe	FA0428	E2F1 FISH Probe
FA0442	BMP7 FISH Probe	FA0371	E2F4 FISH Probe
FA0320	BRCA2 FISH Probe	FA0221	E2F5 FISH Probe
FA0471	BRS3 FISH Probe	FA0332	EFS FISH Probe
FA0314	BTG1 FISH Probe	FA0253	EGR2 FISH Probe
FA0622	BWS(Texas Red)/CEN11p(FITC) FISH Probe	FA0263	EIF3A FISH Probe
FA0344	C15orf41 FISH Probe	FA0223	EIF3E FISH Probe
FA0626	CALCB(Texas Red)/CEN11p(FITC) FISH Probe	FA0130	EIF4E FISH Probe
FA0007	CAMTA1 FISH Probe	FA0114	EIF5A2 FISH Probe
FA0552	CAN(Texas Red)/CEN9q(FITC) FISH Probe	FA0464	ELK1 FISH Probe
FA0388	CASC3 FISH Probe	FA0537	ELN(Texas Red)/CEN7p(FITC) FISH Probe
FA0207	CASP2 FISH Probe	FA0357	EMP2 FISH Probe
FA0010	CASZ1 FISH Probe	FA0560	EMS1(Texas Red)/CEN11p(FITC) FISH Probe
FA0504	CATENINB1(Texas Red)/CEN3q(FITC) FISH Probe	FA0009	ENO1 FISH Probe
FA0200	CAV1 FISH Probe	FA0505	Eph A4(Texas Red)/CEN2q(FITC) FISH Probe
FA0370	CBFB FISH Probe	FA0530	Eph A7(Texas Red)/CEN6p(FITC) FISH Probe
FA0252	CCDC6 FISH Probe	FA0487	EPHA10(Texas Red)/CEN1p(FITC) FISH Probe
FA0173	CCNC FISH Probe	FA0540	EPHA11(Texas Red)/CEN7q(FITC) FISH Probe
FA0566	CCND2(Texas Red)/CEN12p(FITC) FISH Probe	FA0483	EPHA2(Texas Red)/CEN1p(FITC) FISH Probe
FA0278	CD82 FISH Probe	FA0509	EPHA3(Texas Red)/CEN3q(FITC) FISH Probe
FA0095	CDC25A FISH Probe	FA0482	EPHA8(Texas Red)/CEN1p(FITC) FISH Probe
FA0149	CDC25C FISH Probe	FA0510	EPHB1(Texas Red)/CEN3q(FITC) FISH Probe
FA0138	CDH12 FISH Probe	FA0484	EPHB2(Texas Red)/CEN1p(FITC) FISH Probe
FA0376	CDH13 FISH Probe	FA0511	EPHB3(Texas Red)/CEN3q(FITC) FISH Probe
FA0195	CDK6 FISH Probe	FA0539	EPHB41(Texas Red)/CEN7q(FITC) FISH Probe
FA0305	CDKN1B FISH Probe	FA0037	EPS15 FISH Probe
FA0437	CEBPB FISH Probe	FA0266	EPS8L2 FISH Probe
FA0017	CELA2B FISH Probe	FA0420	ERCC2 FISH Probe
FA0021	CELA3A FISH Probe	FA0358	ERCC4 FISH Probe
FA0613	CHRNA4(Texas Red)/CEN20p(FITC) FISH Probe	FA0327	ERCC5 FISH Probe
FA0257	CHUK FISH Probe	FA0533	ESR(Texas Red)/CEN6p(FITC) FISH Probe
FA0449	CLTCL1 FISH Probe	FA0564	ETS1(Texas Red)/CEN11q(FITC) FISH Probe

Make to order

Cat. Num.	Product Name	Cat. Num.	Product Name
FA0614	ETS2(Texas Red)/CEN21q(FITC) FISH Probe	FA0534	HOXA9(Texas Red)/CEN7p(FITC) FISH Probe
FA0392	ETV4 FISH Probe	FA0558	HRAS(Texas Red)/CEN11p(FITC) FISH Probe
FA0277	EXT2 FISH Probe	FA0445	HSPA13 FISH Probe
FA0142	F2R FISH Probe	FA0507	hTR(Texas Red)/CEN3q(FITC) FISH Probe
FA0379	FANCA FISH Probe	FA0084	HTR1F FISH Probe
FA0556	FAS(Texas Red)/CEN10p(FITC) FISH Probe	FA0318	IFT88 FISH Probe
FA0132	FAT4 FISH Probe	FA0181	IGF2R FISH Probe
FA0577	FES(Texas Red)/CEN15q(FITC) FISH Probe	FA0535	IGFBP1(Texas Red)/CEN7p(FITC) FISH Probe
FA0081	FEV FISH Probe	FA0579	IGFR(Texas Red)/CEN15q(FITC) FISH Probe
FA0151	FGF1 FISH Probe	FA0496	IGFR1(Texas Red)/CEN1p(FITC) FISH Probe
FA0140	FGF10 FISH Probe	FA0341	IGH@ FISH Probe
FA0288	FGF3 FISH Probe	FA0111	IGSF10 FISH Probe
FA0287	FGF4 FISH Probe	FA0469	IL1RAPL2 FISH Probe
FA0126	FGF5 FISH Probe	FA0056	IL24 FISH Probe
FA0302	FGF6 FISH Probe	FA0184	IL6 FISH Probe
FA0515	FGFR5(Texas Red)/CEN4p(FITC) FISH Probe	FA0080	IL8RA FISH Probe
FA0485	FGR(Texas Red)/CEN1p(FITC) FISH Probe	FA0328	ING1 FISH Probe
FA0506	FHIT(Texas Red)/CEN3q(FITC) FISH Probe	FA0594	INSR(Texas Red)/CEN19q(FITC) FISH Probe
FA0240	FIBCD1 FISH Probe	FA0522	IRF1(Texas Red)/CEN5q(FITC) FISH Probe
FA0565	FL11(Texas Red)/CEN11q(FITC) FISH Probe	FA0521	IRF2(Texas Red)/CEN4q(FITC) FISH Probe
FA0572	FLT3(Texas Red)/CEN13q(FITC) FISH Probe	FA0526	IRF4(Texas Red)/CEN6p(FITC) FISH Probe
FA0079	FN1 FISH Probe	FA0498	IRR(Texas Red)/CEN1p(FITC) FISH Probe
FA0575	FOS(Texas Red)/CEN14q(FITC) FISH Probe	FA0082	IRS1 FISH Probe
FA0421	FOSB FISH Probe	FA0394	ITGA3 FISH Probe
FA0284	FOSL1 FISH Probe	FA0602	JAG1(Texas Red)/CEN20q(FITC) FISH Probe
FA0333	FOXG1 FISH Probe	FA0225	JAK2 FISH Probe
FA0337	FOXP3 FISH Probe	FA0187	JAZF1 FISH Probe
FA0256	FRAT1 FISH Probe	FA0491	JUN(Texas Red)/CEN1p(FITC) FISH Probe
FA0312	FRS2 FISH Probe	FA0411	JUNB FISH Probe
FA0352	FURIN FISH Probe	FA0065	KCNK12 FISH Probe
FA0383	FXR2 FISH Probe	FA0323	KCNRG FISH Probe
FA0174	FYN FISH Probe	FA0299	KDM5A FISH Probe
FA0133	GAB1 FISH Probe	FA0517	KIT(Texas Red)/CEN4p(FITC) FISH Probe
FA0343	GABRB3 FISH Probe	FA0237	KLF4 FISH Probe
FA0567	GAPDH(Texas Red)/CEN12p(FITC) FISH Probe	FA0422	KLK2 FISH Probe
FA0246	GATA3 FISH Probe	FA0307	KRT8 FISH Probe
FA0083	GBX2 FISH Probe	FA0401	LAMA3 FISH Probe
FA0139	GDNF FISH Probe	FA0499	LAMC2(Texas Red)/CEN1q(FITC) FISH Probe
FA0461	GEMIN8 FISH Probe	FA0329	LAMP1 FISH Probe
FA0041	GFI1 FISH Probe	FA0457	LIF FISH Probe
FA0262	GFRA1 FISH Probe	FA0584	LIS1(Texas Red)/CEN17q(FITC) FISH Probe
FA0465	GJB1 FISH Probe	FA0270	LMO1 FISH Probe
FA0317	GJB2 FISH Probe	FA0276	LMO2 FISH Probe
FA0571	GLI(Texas Red)/CEN12p(FITC) FISH Probe	FA0025	LOC391020 FISH Probe
FA0074	GLI2 FISH Probe	FA0231	LOC642406 FISH Probe
FA0188	GLI3 FISH Probe	FA0477	LOC643123 FISH Probe
FA0156	GNB2L1 FISH Probe	FA0245	LOC727894 FISH Probe
FA0070	GNLY FISH Probe	FA0076	LRP1B FISH Probe
FA0326	GPC5 FISH Probe	FA0291	LRRC32 FISH Probe
FA0536	GRB10(Texas Red)/CEN7q(FITC) FISH Probe	FA0216	LYN FISH Probe
FA0026	GRRP1 FISH Probe	FA0590	MADH4(Texas Red)/CEN18q(FITC) FISH Probe
FA0454	GSTT1 FISH Probe	FA0375	MAF FISH Probe
FA0242	GTF3C4 FISH Probe	FA0473	MAGEA8 FISH Probe
FA0078	GULP1 FISH Probe	FA0346	MAP2K5 FISH Probe
FA0514	HD(Texas Red)/CEN4p(FITC) FISH Probe	FA0127	MAPK10 FISH Probe
FA0033	HDAC1 FISH Probe	FA0513	MASP1(Texas Red)/CEN3q(FITC) FISH Probe
FA0468	HDX FISH Probe	FA0363	MAZ FISH Probe
FA0380	HIC1 FISH Probe	FA0628	MBP(Texas Red)/CEN18q(FITC) FISH Probe
FA0452	HIC2 FISH Probe	FA0146	MCC FISH Probe
FA0450	HIRA FISH Probe	FA0618	MCF2(Texas Red)/CENXp(FITC) FISH Probe
FA0479	HKR3(Texas Red)/CEN1p(FITC) FISH Probe	FA0112	MECOM FISH Probe
FA0164	HLA-C FISH Probe	FA0137	MED10 FISH Probe
FA0165	HMGA1 FISH Probe	FA0004	MEGF6 FISH Probe
FA0627	HNF1B(Texas Red)/CEN17q(FITC) FISH Probe	FA0068	MEIS1 FISH Probe
FA0185	HOXA3 FISH Probe	FA0501	MER(Texas Red)/CEN2q(FITC) FISH Probe

Make to order

Cat. Num.	Product Name	Cat. Num.	Product Name
FA0211	MFHAS1 FISH Probe	FA0214	PDGFRL FISH Probe
FA0012	MFN2 FISH Probe	FA0028	PDIK1L FISH Probe
FA0075	MGAT5 FISH Probe	FA0538	PGY1(Texas Red)/CEN7q(FITC) FISH Probe
FA0013	MIIP FISH Probe	FA0402	PIK3C3 FISH Probe
FA0103	MITF FISH Probe	FA0109	PIK3CB FISH Probe
FA0425	MKKS FISH Probe	FA0197	PIK3CG FISH Probe
FA0459	MKL1 FISH Probe	FA0141	PIK3R1 FISH Probe
FA0226	MLANA FISH Probe	FA0448	PKNOX1 FISH Probe
FA0503	MLH1(Texas Red)/CEN3q(FITC) FISH Probe	FA0019	PLA2G2A FISH Probe
FA0368	MMP2 FISH Probe	FA0218	PLAG1 FISH Probe
FA0456	MN1 FISH Probe	FA0432	PLCG1 FISH Probe
FA0381	MNT FISH Probe	FA0349	PML FISH Probe
FA0543	MOS1(Texas Red)/CEN8p(FITC) FISH Probe	FA0104	POU1F1 FISH Probe
FA0474	MPP1 FISH Probe	FA0161	POU5F1 FISH Probe
FA0294	MRE11A FISH Probe	FA0241	PPAPDC3 FISH Probe
FA0581	MRP1(Texas Red)/CEN16q(FITC) FISH Probe	FA0085	PPARG FISH Probe
FA0066	MSH6 FISH Probe	FA0015	PRAMEF1 FISH Probe
FA0251	MSMB FISH Probe	FA0003	PRDM16 FISH Probe
FA0097	MST1 FISH Probe	FA0016	PRDM2 FISH Probe
FA0098	MST1R FISH Probe	FA0169	PRIM2 FISH Probe
FA0229	MTAP FISH Probe	FA0064	PRKCE FISH Probe
FA0475	MTCP1 FISH Probe	FA0002	PRKCZ FISH Probe
FA0544	MTG81(Texas Red)/CEN8q(FITC) FISH Probe	FA0415	PSMC4 FISH Probe
FA0551	MUSK(Texas Red)/CEN9q(FITC) FISH Probe	FA0102	PSMD6 FISH Probe
FA0261	MXI1 FISH Probe	FA0316	PSMD9 FISH Probe
FA0532	MYB(Texas Red)/CEN6p(FITC) FISH Probe	FA0235	PTCH1 FISH Probe
FA0219	MYBL1 FISH Probe	FA0011	PTCHD2 FISH Probe
FA0433	MYBL2 FISH Probe	FA0230	PTENP1 FISH Probe
FA0488	MYCL1(Texas Red)/CEN1p(FITC) FISH Probe	FA0608	PTGIS(Texas Red)/CEN20p(FITC) FISH Probe
FA0580	MYH11(Texas Red)/CEN16q(FITC) FISH Probe	FA0055	PTGS2 FISH Probe
FA0455	MYO18B FISH Probe	FA0032	PTP4A2 FISH Probe
FA0273	MYOD1 FISH Probe	FA0607	PTPN1(Texas Red)/CEN20p(FITC) FISH Probe
FA0364	MYST1 FISH Probe	FA0545	PTPRD1(Texas Red)/CEN9q(FITC) FISH Probe
FA0222	NBN FISH Probe	FA0035	PTPRF FISH Probe
FA0108	NCK1 FISH Probe	FA0101	PTPRG FISH Probe
FA0062	NCOA1 FISH Probe	FA0154	PTTG1 FISH Probe
FA0325	NDFIP2 FISH Probe	FA0630	PYGL(Texas Red)/CEN14q(FITC) FISH Probe
FA0159	NEDD9 FISH Probe	FA0282	PYGM FISH Probe
FA0623	NEO1(Texas Red)/CEN15q(FITC) FISH Probe	FA0285	RAB1B FISH Probe
FA0162	NEU1 FISH Probe	FA0309	RAB5B FISH Probe
FA0308	NFE2 FISH Probe	FA0183	RAC1 FISH Probe
FA0131	NFKB1 FISH Probe	FA0087	RAF1 FISH Probe
FA0260	NFKB2 FISH Probe	FA0044	RAP1A FISH Probe
FA0414	NFKBIB FISH Probe	FA0090	RARB FISH Probe
FA0024	NIPAL3 FISH Probe	FA0144	RASGRF2 FISH Probe
FA0588	NM23H1(Texas Red)/CEN17q(FITC) FISH Probe	FA0574	RB1(Texas Red)/CEN13q(FITC) FISH Probe
FA0629	NPY(Texas Red)/CEN7p(FITC) FISH Probe	FA0367	RBL2 FISH Probe
FA0152	NR3C1 FISH Probe	FA0043	RBM15 FISH Probe
FA0494	NRAS(Texas Red)/CEN1q(FITC) FISH Probe	FA0110	RBP2 FISH Probe
FA0557	NRG3(Texas Red)/CEN10p(FITC) FISH Probe	FA0224	RECQL4 FISH Probe
FA0495	NTRK1(Texas Red)/CEN1p(FITC) FISH Probe	FA0283	RELA FISH Probe
FA0029	NUDC FISH Probe	FA0096	RHOA FISH Probe
FA0052	NUF2 FISH Probe	FA0045	RHOC FISH Probe
FA0559	NUP98(Texas Red)/CEN11p(FITC) FISH Probe	FA0400	RNMT FISH Probe
FA0061	ODC1 FISH Probe	FA0490	ROR1(Texas Red)/CEN1p(FITC) FISH Probe
FA0361	OTOA FISH Probe	FA0548	ROR2(Texas Red)/CEN9q(FITC) FISH Probe
FA0480	p58(Texas Red)/CEN1p(FITC) FISH Probe	FA0531	ROS1(Texas Red)/CEN6p(FITC) FISH Probe
FA0561	PAK1(Texas Red)/CEN11p(FITC) FISH Probe	FA0182	RPS6KA2 FISH Probe
FA0258	PAX2 FISH Probe	FA0589	RPS6KB1(Texas Red)/CEN17q(FITC) FISH Probe
FA0073	PAX8 FISH Probe	FA0272	RRAS2 FISH Probe
FA0163	PBX2 FISH Probe	FA0060	RRM2 FISH Probe
FA0148	PCBD2 FISH Probe	FA0293	RSF1 FISH Probe
FA0324	PCDH9 FISH Probe	FA0446	RUNX1 FISH Probe
FA0145	PCSK1 FISH Probe	FA0553	RXRA(Texas Red)/CEN9q(FITC) FISH Probe
FA0518	PDGFRA(Texas Red)/CEN4p(FITC) FISH Probe	FA0585	RYK(Texas Red)/CEN17q(FITC) FISH Probe

Make to order

Cat. Num.	Product Name	Cat. Num.	Product Name
FA0048	S100A2 FISH Probe	FA0489	TIE1(Texas Red)/CEN1p(FITC) FISH Probe
FA0366	SALL1 FISH Probe	FA0547	TIE2(Texas Red)/CEN9q(FITC) FISH Probe
FA0570	SAS(Texas Red)/CEN12p(FITC) FISH Probe	FA0398	TK1 FISH Probe
FA0362	SBK1 FISH Probe	FA0347	TLE3 FISH Probe
FA0143	SCAMP1 FISH Probe	FA0259	TLX1 FISH Probe
FA0077	SCN1A FISH Probe	FA0155	TLX3 FISH Probe
FA0406	SERPINB5 FISH Probe	FA0481	TNFRSF1B(Texas Red)/CEN1p(FITC) FISH Probe
FA0239	SET FISH Probe	FA0604	TOP1(Texas Red)/CEN20p(FITC) FISH Probe
FA0030	SFN FISH Probe	FA0502	TOP2B(Texas Red)/CEN3q(FITC) FISH Probe
FA0069	SFXN5 FISH Probe	FA0049	TPM3 FISH Probe
FA0470	SH2D1A FISH Probe	FA0339	TRAF3 FISH Probe
FA0615	SHOX(Texas Red)/CENXp(FITC) FISH Probe	FA0331	TRD@ FISH Probe
FA0198	SLC26A3 FISH Probe	FA0204	TRIM24 FISH Probe
FA0008	SLC45A1 FISH Probe	FA0396	TRIM37 FISH Probe
FA0410	SMARCA4 FISH Probe	FA0497	TRKA(Texas Red)/CEN1p(FITC) FISH Probe
FA0203	SMO FISH Probe	FA0549	TRKB(Texas Red)/CEN9q(FITC) FISH Probe
FA0424	SMOX FISH Probe	FA0578	TRKC(Texas Red)/CEN15q(FITC) FISH Probe
FA0342	SNRPN FISH Probe	FA0243	TSC1 FISH Probe
FA0336	SNW1 FISH Probe	FA0321	TSC22D1 FISH Probe
FA0180	SOD2 FISH Probe	FA0086	TSEN2 FISH Probe
FA0063	SOS1 FISH Probe	FA0274	TSG101 FISH Probe
FA0384	SPECC1 FISH Probe	FA0476	TSPY9 FISH Probe
FA0378	SPG7 FISH Probe	FA0058	TTC13 FISH Probe
FA0280	SPI1 FISH Probe	FA0460	TYMP FISH Probe
FA0603	SRC(Texas Red)/CEN20p(FITC) FISH Probe	FA0598	TYROBP(Texas Red)/CEN19p(FITC) FISH Probe
FA0466	SSX2 FISH Probe	FA0631	UBE2V2(Texas Red)/CEN8p(FITC) FISH Probe
FA0117	ST6GAL1 FISH Probe	FA0345	UNC13C FISH Probe
FA0201	ST7 FISH Probe	FA0190	UPP1 FISH Probe
FA0390	STAT3 FISH Probe	FA0107	UROC1 FISH Probe
FA0389	STAT5A FISH Probe	FA0051	USF1 FISH Probe
FA0193	STEAP4 FISH Probe	FA0412	USF2 FISH Probe
FA0611	STK15(Texas Red)/CEN20p(FITC) FISH Probe	FA0315	UTP20 FISH Probe
FA0612	STK6(Texas Red)/CEN20p(FITC) FISH Probe	FA0593	VAV1(Texas Red)/CEN19q(FITC) FISH Probe
FA0569	STYK1(Texas Red)/CEN12q(FITC) FISH Probe	FA0168	VEGFA FISH Probe
FA0387	SUZ12 FISH Probe	FA0573	VEGFR1(Texas Red)/CEN13q(FITC) FISH Probe1
FA0458	SYN3 FISH Probe	FA0516	VEGFR2(Texas Red)/CEN4p(FITC) FISH Probe
FA0178	SYNE1 FISH Probe	FA0525	VEGFR3(Texas Red)/CEN5q(FITC) FISH Probe
FA0563	T3D(Texas Red)/CEN11q(FITC) FISH Probe	FA0313	VENTXP3 FISH Probe
FA0486	TAL1(Texas Red)/CEN1p(FITC) FISH Probe	FA0247	VIM FISH Probe
FA0550	TAL2(Texas Red)/CEN9q(FITC) FISH Probe	FA0014	VPS13D FISH Probe
FA0122	TBC1D1 FISH Probe	FA0020	VWA5B1 FISH Probe
FA0451	TBX1 FISH Probe	FA0264	WDR11 FISH Probe
FA0205	TBXAS1 FISH Probe	FA0120	WHSC1 FISH Probe
FA0023	TCEA3 FISH Probe	FA0306	WNT10B FISH Probe
FA0355	TCEB2 FISH Probe	FA0202	WNT2 FISH Probe
FA0541	TCRB1(Texas Red)/CEN7q(FITC) FISH Probe	FA0393	WNT3 FISH Probe
FA0271	TEAD1 FISH Probe	FA0300	WNT5B FISH Probe
FA0568	TEL(Texas Red)/CEN12p(FITC) FISH Probe	FA0215	WRN FISH Probe
FA0136	TERT FISH Probe	FA0275	WT1 FISH Probe
FA0199	TES FISH Probe	FA0088	XPC FISH Probe
FA0158	TFAP2A FISH Probe	FA0334	YWHAZP1 FISH Probe
FA0441	TFAP2C FISH Probe	FA0338	YY1 FISH Probe
FA0330	TFDP1 FISH Probe	FA0373	ZFH3 FISH Probe
FA0105	TFG FISH Probe	FA0624	ZNF146(Texas Red)/CEN19p(FITC) FISH Probe
FA0597	TGFB1(Texas Red)/CEN19p(FITC) FISH Probe	FA0610	ZNF217(Texas Red)/CEN20p(FITC) FISH Probe
FA0267	TH FISH Probe	FA0632	ZNF227(Texas Red)/CEN19p(FITC) FISH Probe
FA0587	THRA(Texas Red)/CEN17q(FITC) FISH Probe	FA0209	ZNF425 FISH Probe
FA0089	THRB FISH Probe		

Accessory Kits & Reagents

Product Name : FFPE FISH PreTreatment Kit 1
Cat. Num. : KA2375

Product Description :

Pre-treatment is an essential step for effective FISH on Formalin-Fixed Paraffin-Embedded (FFPE) tissue sections. This kit contains key reagents used to pretreat FFPE tissue sections from dewaxing with xylene through proteolytic digestion to helps permeabilization of cell membranes to facilitate penetration of fluorescence labeled probes. After proteolytic digestion, proceed the subsequent steps with the FISH assay protocol.

Product Name : FFPE FISH PreTreatment Kit 2
Cat. Num. : KA2376

Product Description :

Pre-treatment is an essential step for effective FISH on Formalin-Fixed Paraffin-Embedded (FFPE) tissue sections. This kit contains key reagents used to pretreat FFPE tissue sections from dewaxing with xylene through proteolytic digestion to helps permeabilization of cell membranes to facilitate penetration of fluorescence labeled probes. After proteolytic digestion, proceed the subsequent steps with the FISH assay protocol.

Cat. Num.	Product Name	Product Description
U0032	Antifade Solution	Antifade Solution is comprised of Antifade and glycerol in an aqueous buffer solution.
U0031	DAPI Counterstain (1500ng/ml)	Recommended counterstain when a more intense DAPI stain is desired. Provides more distinct DAPI banding patterns than achievable with DAPI Counterstain (1500 ng/mL) in certain applications such as staining of nuclear DNA in paraffin sections.
U0030	DAPI Counterstain (150ng/ml)	DAPI is the recommended counterstain for FISH probes. This concentration of DAPI provides a weaker DAPI stain usually preferred with smaller probe signals such as FISH probes.
KA2375	FFPE FISH PreTreatment Kit 1	Pre-treatment is an essential step for effective FISH on Formalin-Fixed Paraffin-Embedded (FFPE) tissue sections. This kit contains key reagents used to pretreat FFPE tissue sections from dewaxing with xylene through proteolytic digestion to helps permeabilization of cell membranes to facilitate penetration of fluorescence labeled probes. After proteolytic digestion, proceed the subsequent steps with the FISH assay protocol.
KA2376	FFPE FISH PreTreatment Kit 2	Pre-treatment is an essential step for effective FISH on Formalin-Fixed Paraffin-Embedded (FFPE) tissue sections. This kit contains key reagents used to pretreat FFPE tissue sections from dewaxing with xylene through proteolytic digestion to helps permeabilization of cell membranes to facilitate penetration of fluorescence labeled probes. After proteolytic digestion, proceed the subsequent steps with the FISH assay protocol.
U0028	FISH Hybridization Buffer(1ml)	FISH Hybridization Buffer is optimized for performance with FISH probes and contains dextran sulfate, formamide, and SSC (pH 7.0).
U0029	FISH Hybridization Buffer(5ml)	FISH Hybridization Buffer is optimized for performance with FISH probes and contains dextran sulfate, formamide, and SSC (pH 7.0).

