









Knockdown-Validated Recombinant Antibody and Cell Lysate Kits

The Benchmark for Reliable Data and Reproducibility

Bioss's recombinant antibody kits are designed to simplify and enhance your antibody validation workflows. Each kit combines a high-specificity recombinant monoclonal antibody with knockdown and wild-type cell lysates, providing built-in controls to confirm target accuracy and reproducibility. The recombinant antibody ensures consistent performance across batches, while the knockdown lysate serves as a protein-deficient control to verify antibody specificity. Suitable for various applications, including Western blotting and immunocytochemistry, these ethically produced, ready-to-use kits streamline your research and support reliable, reproducible results.

Confidence in Every Kit: *Product Highlights*

-  **Enhanced Specificity Validation:** Built-in knockdown and wild-type lysates ensure accurate antibody targeting with minimal cross-reactivity.
-  **Consistent, Reproducible Results:** Recombinant antibodies and standardized lysates deliver reliable, repeatable results.
-  **Streamlined Workflow:** Ready-to-use controls reduce preparation time and simplify experimental setups.
-  **Complete Validation Solution:** Designed to verify both antibody specificity and sensitivity in one comprehensive kit.
-  **Flexible Assay Compatibility:** Suitable for Western Blot, Immunoprecipitation, Immunofluorescence, and more.
-  **Rigorous Quality Assurance:** High-quality standards minimize variability and maximize performance.
-  **Cost and Time Efficient:** Inclusion of controls eliminate the need for separate sourcing, saving time and budget.
-  **Ethical and Sustainable:** Animal-free recombinant antibodies align with responsible research practices.

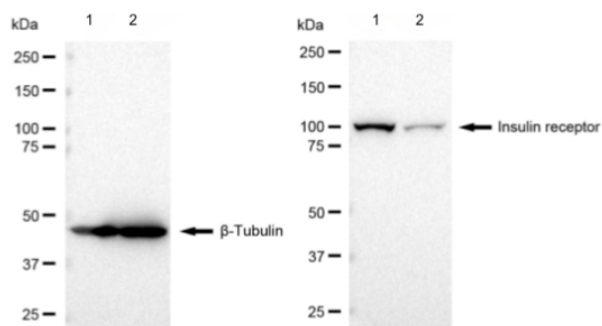


Figure 1. Western blot analysis using **Insulin Receptor Recombinant Antibody (BSM-90014R)** at 1:5000 and HRP-conjugated goat anti-rabbit secondary antibody in HeLa cells. Lane 1: Wild-type (WT) cell lysates. Lane 2: Knockdown (KD) cell lysates. β -Tubulin was used as a loading control. Expression was reduced in KD sample indicating successful knockdown detection.

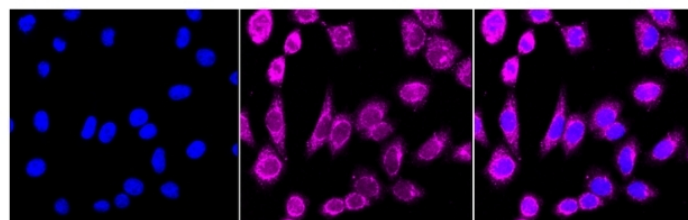


Figure 2. Immunocytochemical staining using **Brain-derived Neurotrophic Factor Recombinant Antibody (BSM-90346R)** at 1:1000 in HepG2 cells. Nuclei were stained blue with DAPI and BDNF was stained magenta with conjugated secondary antibody.

NAME	CATALOG NO.
ABCD1 Recombinant Antibody	BSM-90066R
Adiponectin Receptor 1 Recombinant Antibody	BSM-90152R
AGL Recombinant Antibody	BSM-90149R
Alkaline Phosphatase Recombinant Antibody	BSM-90091R
Androgen Receptor Recombinant Antibody	BSM-90059R
Arp2 Recombinant Antibody	BSM-90521R
Arp3 Recombinant Antibody	BSM-90335R
ATG9A Recombinant Antibody	BSM-90069R
Bcl-2 Recombinant Antibody	BSM-90318R
Calreticulin Recombinant Antibody	BSM-90012R
Catalase Recombinant Antibody	BSM-90045R
Cathepsin D Recombinant Antibody	BSM-90065R
CD105 Recombinant Antibody	BSM-90102R
CD13 Recombinant Antibody	BSM-90070R
CD163 Recombinant Antibody	BSM-90324R
CD166 Recombinant Antibody	BSM-90082R
CD36 Recombinant Antibody	BSM-90072R
CD44 Recombinant Antibody	BSM-90061R
CD46 Recombinant Antibody	BSM-90297R
Complement C3 Recombinant Antibody	BSM-90042R
Cyclin D1 Recombinant Antibody	BSM-90351R
DDX5 Recombinant Antibody	BSM-90080R
Desmin Recombinant Antibody	BSM-90407R

NAME	CATALOG NO.
Desmoglein 2 Recombinant Antibody	BSM-90224R
EIF4EBP1 Recombinant Antibody	BSM-90007R
ERK1 Recombinant Antibody	BSM-90118R
Fatty Acid Synthase Recombinant Antibody	BSM-90419R
FOXO1 Recombinant Antibody	BSM-90291R
Galectin 3 Recombinant Antibody	BSM-90022R
GPX1 Recombinant Antibody	BSM-90423R
Insulin Receptor Recombinant Antibody	BSM-90014R
JNK1 Recombinant Antibody	BSM-90028R
Keratin 10 Recombinant Antibody	BSM-90254R
LAMP2 Recombinant Antibody	BSM-90523R
LPP Recombinant Antibody	BSM-90275R
MERTK Recombinant Antibody	BSM-90395R
p38 MAPK Recombinant Antibody	BSM-90194R
PBP Recombinant Antibody	BSM-90286R
PI3 Kinase p110 beta Recombinant Antibody	BSM-90307R
PKC delta Recombinant Antibody	BSM-90132R
RAD51 Recombinant Antibody	BSM-90032R
Smad2 Recombinant Antibody	BSM-90349R
SMAD5 Recombinant Antibody	BSM-90140R
STAT1 Recombinant Antibody	BSM-90182R
Stat3 Recombinant Antibody	BSM-90365R
TGF beta 1 Recombinant Antibody	BSM-90415R

To view more KD-Validated Recombinant Antibody and Cell Lysate Kits, please visit Biossusa.com.