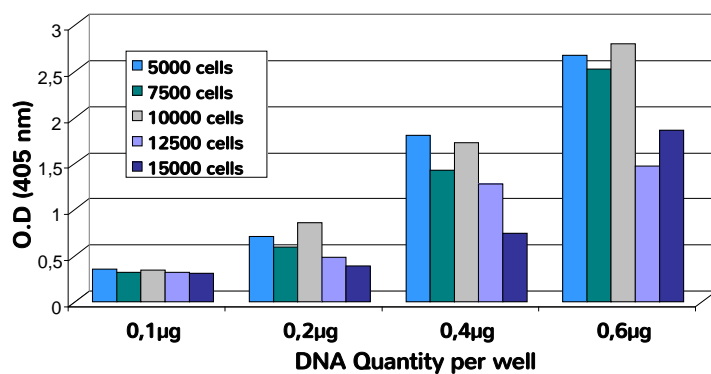


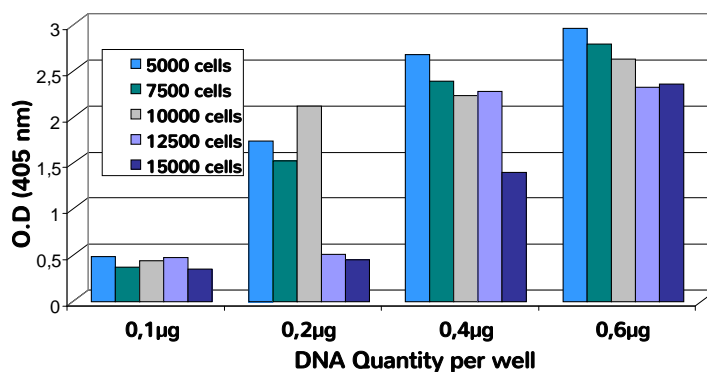
## VeroFect™ Results

### VeroFect™ transfection efficiency in 96-well plate format

VeroFect transfection efficiency in 96 well plate after 24h

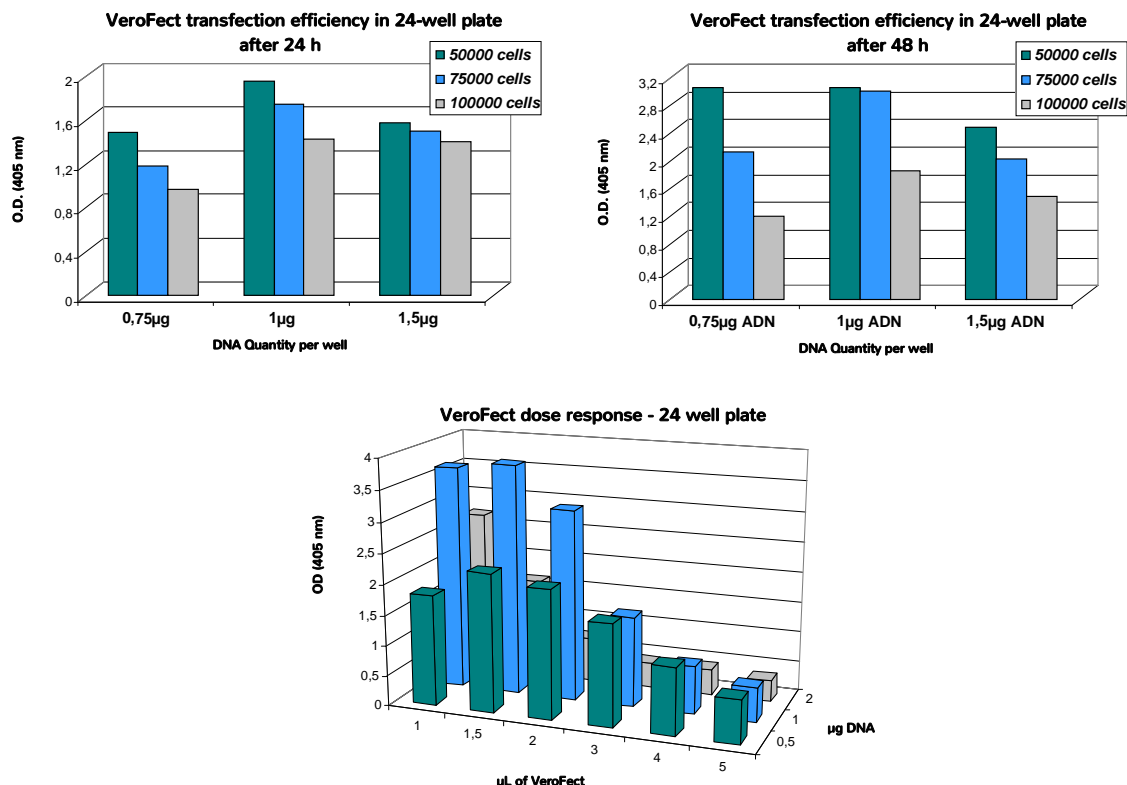


VeroFect transfection efficiency in 96 well plate after 48h



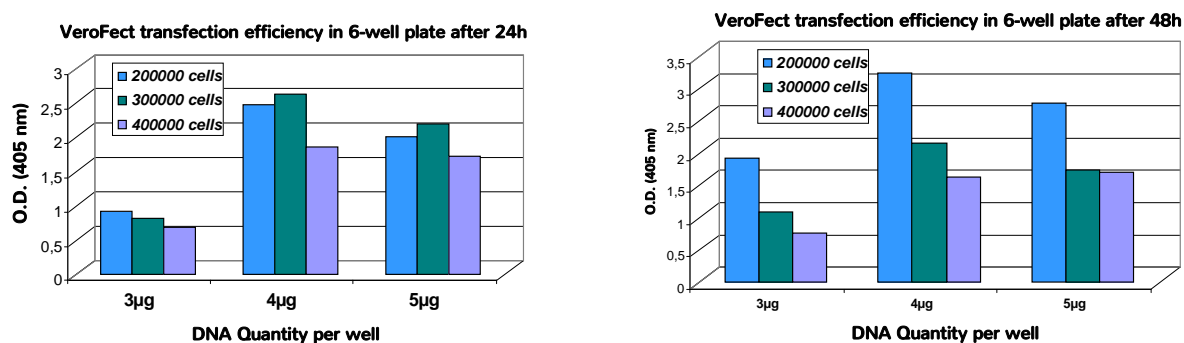
Cells were transfected in 96-well plates with different amount of DNA (coding for LacZ) and **VeroFect™** in function of cell density. Transfections were performed as described in the instruction manual with 2µL of **VeroFect** per µg of DNA. β-Galactosidase expression was revealed 24 or 48 h after transfection using ONPG assay kit (catalog # GO10001).

## VeroFect™ transfection efficiency in 24-well plate format



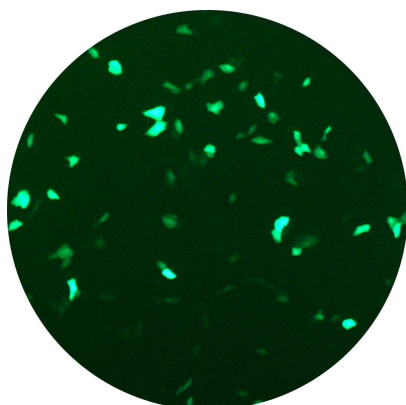
Cells were transfected in 24-well plates with different amount of DNA (coding for LacZ) and **VeroFect™** in function of cell density (top) or of **VeroFect** amount (bottom). Transfections were performed as described in the instruction manual with 2µL of **VeroFect** / µg of DNA. β-Galactosidase expression was revealed 24 or 48 h after transfection using ONPG assay kit (catalog # GO10001).

## VeroFect™ transfection efficiency in 6-well plate format

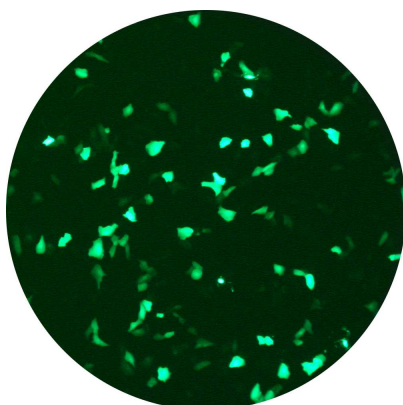


Cells were transfected in 6-well plates with different amount of DNA (coding for LacZ) and **VeroFect™** in function of cell density. Transfections were performed as described in the instruction manual with 2µL of **VeroFect** / µg of DNA. β-Galactosidase expression was revealed 24 or 48 h after transfection using ONPG assay kit (catalog # GO10001).

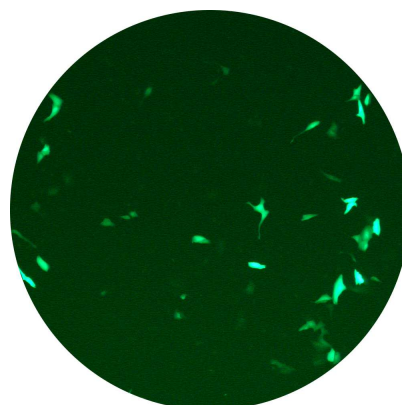
## VeroFect™ efficiency compared to other transfection reagents



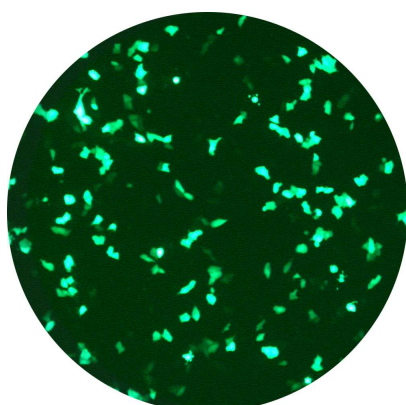
Reagent T



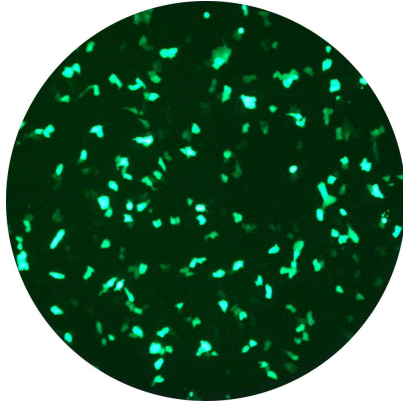
Reagent J



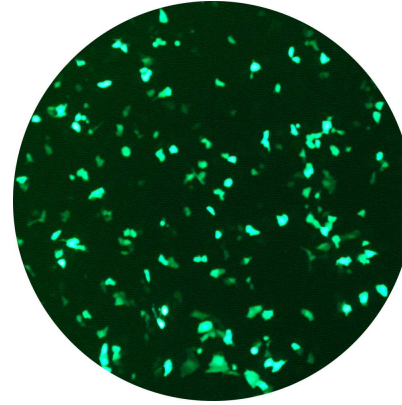
Reagent G



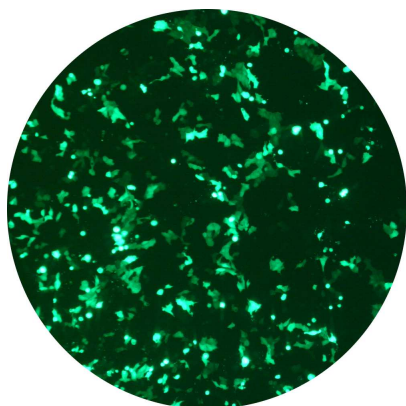
VeroFect



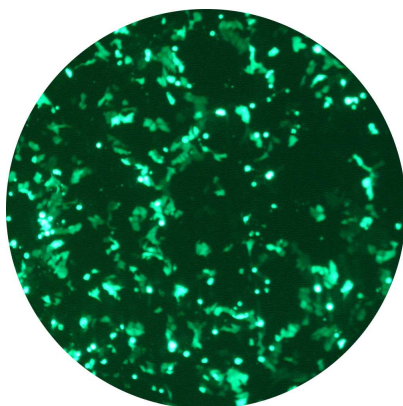
VeroFect



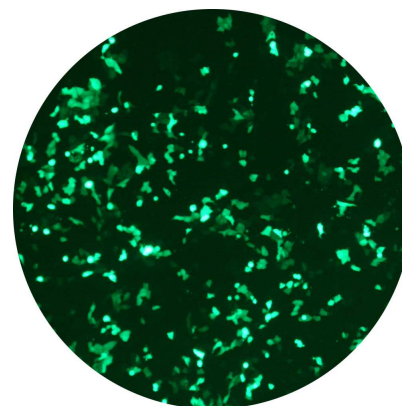
VeroFect



VeroFect



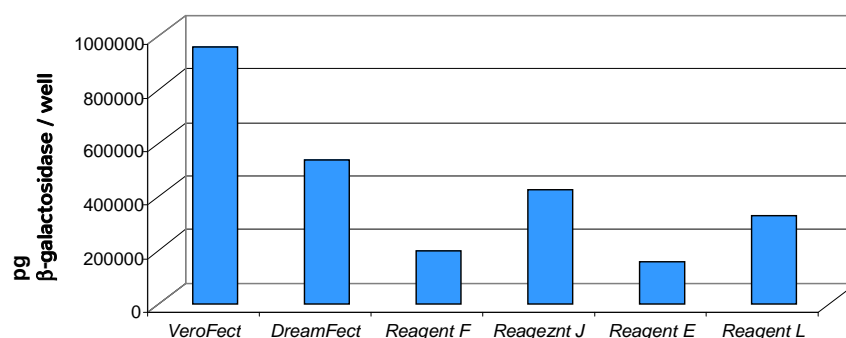
VeroFect



VeroFect

Vero cells ( $5 \times 10^4$ ) were transfected with 1  $\mu\text{g}$ /well of pEGFP plasmid and 2  $\mu\text{l}$  of **VeroFect** in 24-well plates. GFP expression was monitored 48 h after transfection by FACS. The others transfection reagents were assayed according to the manufacturer's instruction.

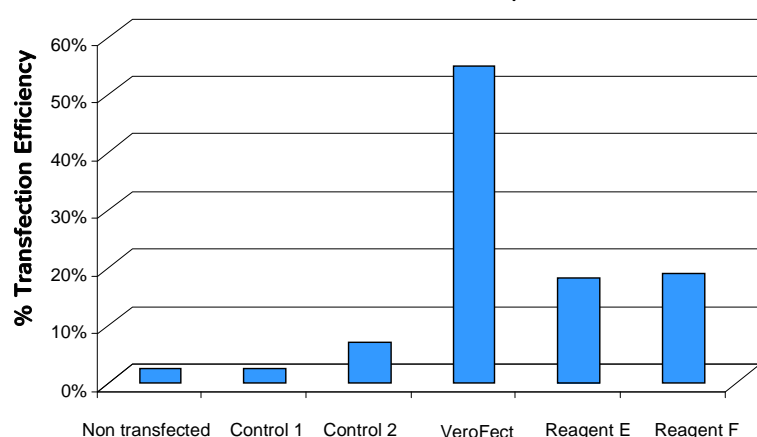
## Comparison of Transfection Reagents Efficiency on Vero Cells



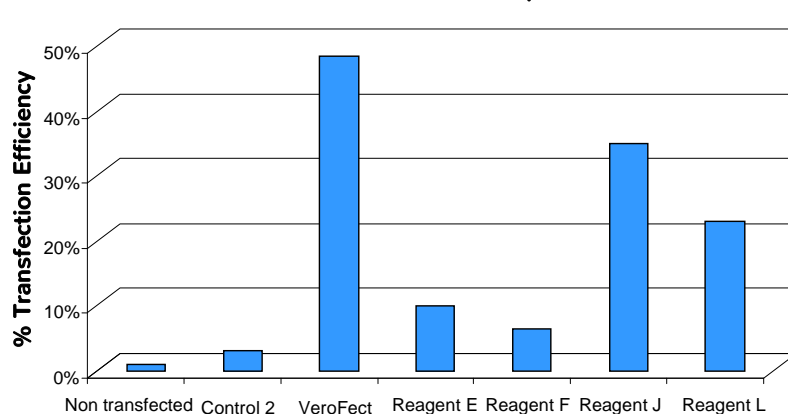
Cells ( $4 \times 10^5$ ) were transfected with  $0.5 \mu\text{g}/\text{well}$  of pLacZ plasmid and various transfection reagent in 96-well plates.  $\beta$ -Galactosidase expression was revealed 48 h after transfection using OZ Biosciences' ONPG  $\beta$ -Galactosidase assay kit (catalog number GO-10001).

## VeroFect™ transfection efficiency analyzed by FACS

VeroFect % of Transfection Efficiency on Vero Cells

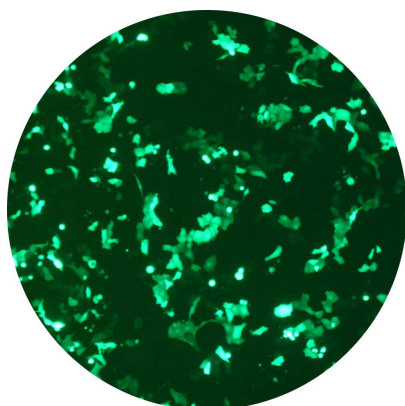


VeroFect % of Transfection Efficiency on Vero Cells

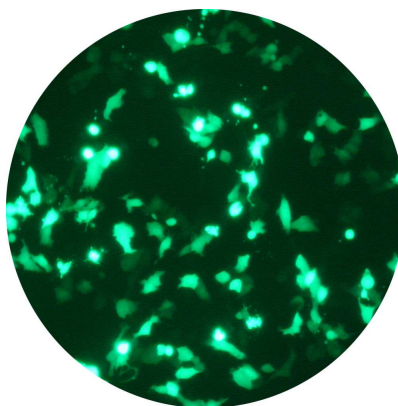


Vero cells ( $5 \times 10^4$ ) were transfected with  $1 \mu\text{g}/\text{well}$  of pEGFP plasmid and  $2 \mu\text{l}$  of **VeroFect** in 24-well plates. GFP expression was monitored 48 h after transfection by FACS. Transfection reagents E & F were assayed according to the manufacturer's instruction. Control 1: **VeroFect** alone (no DNA); Control 2: **VeroFect** + plasmid DNA encoding for LacZ.

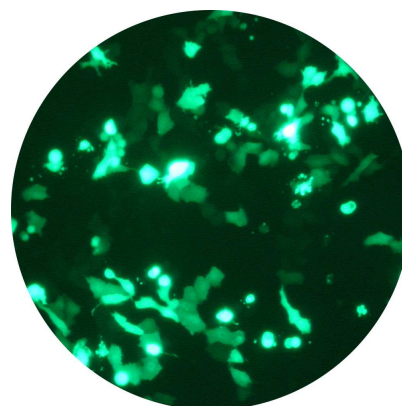
### Green Fluorescent Protein expression in Vero Cells



**VeroFect**



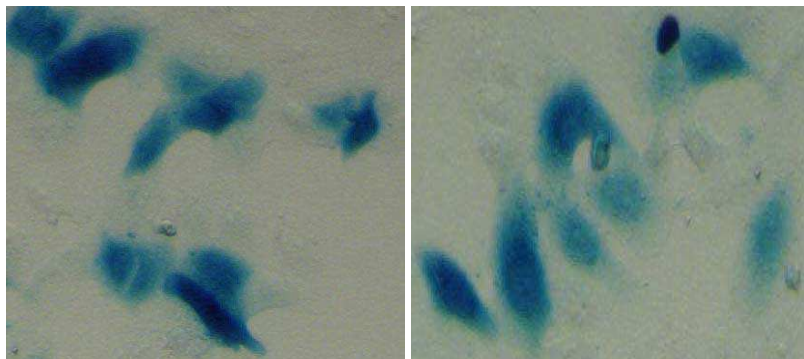
**VeroFect**



**VeroFect**

Cells ( $5 \times 10^4$ ) were transfected with 1  $\mu\text{g}$ /well of pEGFP plasmid and 2  $\mu\text{l}$  of **VeroFect™** reagent in 24-well plates. E-GFP expression was monitored 24 h after transfection by fluorescence microscopy.

### $\beta$ -Galactosidase expression in Vero cells



Cells ( $5 \times 10^4$ ) were transfected with 1  $\mu\text{g}$ /well of pLacZ plasmid and 2  $\mu\text{l}$  of **VeroFect™** reagent in 24-well plates.  $\beta$ -Galactosidase expression was detected 24 h after transfection with X-Gal staining kit (catalog # GX-10003).

For an updated list of cells successfully transfected, please visit our website: [www.ozbiosciences.com](http://www.ozbiosciences.com).